



GPW-1200

GPW-1400

Pressure Washers

Operating and  
Maintenance  
Instructions



Read before operating.

CONTENTS:

IMPORTANT SAFETY INSTRUCTIONS.....3

GROUNDING INSTRUCTIONS.....3

GROUND FAULT CIRCUIT INTERRUPTER PROTECTION.....4

EXTENSION CORDS.....4

CAUTIONS.....4

ASSEMBLY INSTRUCTIONS: GPW-1200L.....5

ASSEMBLY INSTRUCTIONS: GPW-1400.....5

OPERATING INSTRUCTIONS: GPW-1200L .....5

OPERATING INSTRUCTIONS: GPW-1400 .....5

CHEMICAL OR SOAP INJECTION .....6

CHEMICAL OR SOAP INJECTION: GPW-1200 ..... 6-7

TROUBLESHOOTING: ALL MODELS .....7

MAINTENANCE: GPW-1200L .....8

MAINTENANCE: GPW-1400 .....8

DISASSEMBLY: GPW-1200 .....8

GPW-1200L.....9

GPW-1400L.....10

Thank you for purchasing this Goodway Pressure Washers System. We appreciate your business and look forward to serving you in the future. As with all Goodway products, you can be assured that the finest quality components and workmanship have gone into this machine.

Please take a few minutes to read the following Operating and Maintenance Instructions. Please pay particular attention to the safety instructions and exercise caution when using this machine.

**GOODWAY® TECHNOLOGIES CORPORATION**

HVAC & FACILITY MAINTENANCE SOLUTIONS

For Sales Call: 1-800-333-7467  
For Service Call: 1-800-370-2855



## WARNING



### IMPORTANT SAFETY INSTRUCTIONS

To prevent operator injury and damage to the equipment, please read and observe the following basic safety precautions:

1. Read all the instructions before using the product.
2. To reduce the risk of injury, close supervision is necessary when the product is used near children.
3. Know how to stop the product and bleed pressures quickly. Be thoroughly familiar with the controls.
4. Stay alert – watch what you are doing!
5. Do not operate the product when fatigued or under the influence of alcohol or drugs.
6. Keep operation area clear of all persons.
7. Do not overreach or stand on unstable support. Keep good footing and balance at all times.
8. Follow the maintenance instructions specified in the manual.
9. Check with your local water utility to see if a backflow preventer is required.

**▲ WARNING:** Risk of Injection or Severe Injury – Keep Clear of Nozzle – Do Not Direct Discharge Stream at Humans or Animal – This Product Is to be Used Only by Trained Operators.

SAVE THESE INSTRUCTIONS

### GROUNDING INSTRUCTIONS

This product must be grounded. If it should malfunction or break down, grounding provides a path of least resistance for electric current to reduce the risk of electric shock. This product is equipped with a cord having an equipment-grounding conductor and a grounding plug. The plug must be plugged into an appropriate outlet that is properly installed and grounded in accordance with all local codes and ordinances.

**DANGER:** Improper connection of the equipment-grounding conductor can result in a risk of electrocution. Check with a qualified electrician or service personnel if you are in doubt as to whether the outlet is properly grounded.

**DO NOT USE ANY TYPE OF ADAPTOR WITH THIS PRODUCT.**

## GROUND FAULT CIRCUIT INTERRUPTER PROTECTION

Pressure washers are provided with a ground fault circuit interrupter (GFCI) built into the power supply cord. This device provides additional protection from the risk of electric shock. Should replacement of the plug or cord become necessary, use only identical replacement parts that include GFCI protection.

## EXTENSION CORDS

Use only 3-wire extension cords that have 3-prong grounding-type plugs and 3-pole cord connectors that accept the plug from the product. Use only extension cords that are intended for outdoor use. These extension cords are identified by a marking, "Acceptable for use with outdoor appliances; store indoors while not in use." Use only extension cords having an electrical rating not less than the rating of the product. Do not use damaged extension cords. Examine extension cord before using and replace if damaged.

Do not abuse extension cord and do not yank on any cord disconnect. Keep cord away from heat and sharp edges. Always disconnect the extension cord from the receptacle before disconnecting the product from the extension cord.

**WARNING:** To reduce the risk of electrocution, keep all connections dry and off the ground. Do not touch plug with wet hands.

## CAUTIONS

1. When machine is shut down, a small amount of water is left in pump and plumbing; therefore, ***THE MACHINE MUST NOT BE STORED UNDER FREEZING CONDITIONS***. If necessary, a small amount of antifreeze may be pumped through the system if machine is left in cold storage.
2. Do not run pump dry.
3. When pump is running without spraying, the bypass valve allows the water to circulate around the pump. This condition will gradually elevate the temperature of the water through friction, and overheating will damage the pump seals. Therefore, ***THE PUMP MUST NOT BE ALLOWED TO RUN MORE THAN 5 MINUTES WITHOUT SPRAYING***.
4. The Goodway GPW-1200 and GPW-1400 may be used with warm water at a maximum of 140°F (60°C) to improve cleaning. ***IF WARM WATER SUPPLY IS USED, THE TIME IN NO. 3 SHOULD BE REDUCED FURTHER***.
5. Since the high pressure spray is very powerful, ***DO NOT AIM AT OR SPRAY HUMANS OR ANIMALS***.
6. Do not operate without eye protection.

## ASSEMBLY INSTRUCTIONS: GPW-1200

The GPW-1200 comes virtually ready to use. Final assembly requires only the connection of the gun/wand and high pressure hose using the quick disconnect fitting. Insert the dip tube into the chemical container.

## ASSEMBLY INSTRUCTIONS: GPW-1400

1. Remove the unit from the packing material and inspect for damage.
2. Remove the "shipping plug" from the pump and replace it with the vented plug.
3. Attach the wand and gun assembly to the hose.

## OPERATING INSTRUCTIONS: GPW-1200

1. Connect water hose capable of delivering a minimum of 1.8 GPM (6.8 LPM) to inlet and turn on faucet. Consult the Goodway catalog for heavy-duty water supply hose. DO NOT RUN PUMP DRY.
2. Plug into grounded outlet of proper voltage for the machine. Make sure the outlet is fused for a minimum of 15 Amps. Any additional extension cord must be grounded and be a minimum of 12-3 gauge wire. Goodway offers a 20 amp, 10-3 gauge, 50' (15.2m) cord – see catalog.
3. Fill chemical container with soap solution or other chemical and place on ground close to machine. Connect dip tube to container.
4. Turn motor on (watertight switch located on side of power unit). Pull trigger on spray gun before turning on switch in order to lighten starting load on motor.

## OPERATING INSTRUCTIONS: GPW-1400

1. Connect a water hose (minimum of 5/8" diameter – available from Goodway) to the water faucet. Run water through the hose into an open drain or bucket to flush debris out of faucet and hose before connecting to pump. Shut water off when water runs clear.
2. Attach garden hose to water inlet fitting at pump.
3. Open water faucet to prime pump. Hold the trigger on the gun assembly open to allow air to escape.
4. Plug the power cord into a properly grounded receptacle of the proper voltage.
5. While holding the trigger open, start the motor.

**NOTE:** Holding the trigger open lessens the load on the motor.

6. To adjust the spray pattern, turn off the machine and turn the ring on the nozzle.
7. You are now ready to use the GPW-1400 pressure washer.

# CHEMICAL OR SOAP INJECTION

The GPW-1200 come standard with soap injection. The GPW-1400 requires optional P/N 7050 to add this feature. It is recommended that liquid chemical or soap be used whenever possible as powders may not be completely dissolved and may clog the siphon injector. The chemical dip tube is supplied with a strainer to minimize contamination of the siphon injector. The dip tube may be placed in the tank supplied or in a drum of solution if prolonged application of solution is required. The dip tube may have to be lengthened when using 30 or 55 gallon (114 or 208 liter) drums of solution.

## CHEMICAL OR SOAP INJECTION: GPW-1200

- 1. Fill plastic container with chemical or soap.
- 2. Connect plastic dip tube and turn machine on. A dip tube strainer is provided and should be attached to dip tube.
- 3. The GPW-1200 is supplied with the standard adjustable spray nozzle [P/N 5812 (High-Lo Nozzle)]. The nozzle will draw chemical or soap at low pressure (approx. 150 PSI/10BAR). The following describes their features and operation.



### Adjustable High-Low Pressure Nozzle (P/N 5812)

Pressure is regulated by turning collar on spray nozzle. Turn the collar fully counterclockwise (as viewed from spray handle) for maximum pressure. One full turn clockwise will decrease pressure to 150 PSI (10 BAR) at which point chemical or soap will be injected in the spray.



### Multi-Jet Nozzle ( P/N PWN-002)

**NOTE:** Maximum pressure with nozzle (P/N PWN-002) is 1,000 PSI (70 BAR). Supplied with a hardened stainless steel spray tip containing four orifices each marked with orifice numbers as follows:

Orifice No.	Spray Pattern	Usage
00045	Solid Jet	Concentrated Cleaning
15045	15° Flat Spray	General Cleaning
40045	40° Flat Spray	Large Area Cleaning
1520	15° Low Pressure	Pick up Soap or Chemicals

## IMPORTANT – INDEX NOZZLE WITH PRESSURE SHUT OFF

4. It takes several seconds before the soap reaches the spray nozzle.
5. Soap is always applied at low pressure. (Siphon injector is activated at low pressure only).

## SOAP INJECTION: GPW-1400

Optional Soap Injector Assembly (P/N 7050) attaches between the output of the pump and the hose. To use, insert the dip tube into the liquid soap. Turn off the machine and adjust the adjustable nozzle to the low pressure setting. Turn the machine on and soap will be injected into the water. To rinse, turn the machine off and adjust the nozzle to high pressure and turn the machine back on.

## MIXING RATIOS

The mixing ratio of chemicals to water depends on the viscosity of the chemicals being used. The mix ratio for watery liquids is approximately 1 part chemical or soap to 20 parts water when low pressure spray is used.

If a chemical is to be mixed with water in a ratio of 100:1, premix 1 part chemical with 4 parts of water in the tank.

The spray nozzle is adjusted to low pressure setting. The diluted chemical is now mixed in a ratio of 20:1 with water which corresponds to a ratio of 100:1 of the undiluted chemical.

For mix ratio of 1 tablespoon per gallon of water, prepare a premix solution of 1 part chemical to 10 parts of water.

For mix ratio of 1 teaspoon per gallon of water, prepare a premix solution of 1 part chemical to 30 parts of water.

A low pressure spray without chemical injection is obtained by opening spray nozzle and removing dip tube from soap container.

**WARNING:** Applying strong acid or caustic solutions with a pressure washer is not recommended and voids the warranty.

TROUBLESHOOTING: ALL MODELS

Problem	Probable Causes	Remedy
Motor stops: Electric Models	Overloaded due to long run without spraying  Extension cord too long or inadequate size  Fuse blown	Let cool down. Motor protector will reset automatically and motor can be started  Change extension cord  Plug into adequately fused outlet
Pump runs but no spray	Water not turned on  Screen washer clogged  Spray nozzle clogged	Turn on water  Clean washer  Clean nozzle
Water comes out of dip tube	Siphon injector check valve clogged	Disassemble injector and clean
Soap or chemical not picked up	Siphon injector clogged  Spray nozzle not adjusted correctly  Pressure too high	Disassemble injector and clean  Adjust according to instructions  Lower pressure
Spray Pressure low or fluctuating	Foreign matter trapped in the check valve of the pump	Disassemble pump and clean



## MAINTENANCE: GPW-1200

The GPW-1200 is shipped with the proper amount of oil. Due to the possibility of spillage in shipment, the oil level should be checked prior to the first use of the machine, as well as prior to each use of the machine.

With the machine resting on a level surface, check dip stick for correct oil level. The correct oil level should reach the full mark on the dip stick.

**(Note:** Dip stick just pulls out.) If the oil level is low, add oil - **DO NOT OVERFILL**. Use only an ISO 68 Hydraulic Oil ( P/N HPW-CPO).

Oil should be changed after the first 50 hours of operation and then every 500 hours or less depending on operating conditions.

## MAINTENANCE: GPW-1400

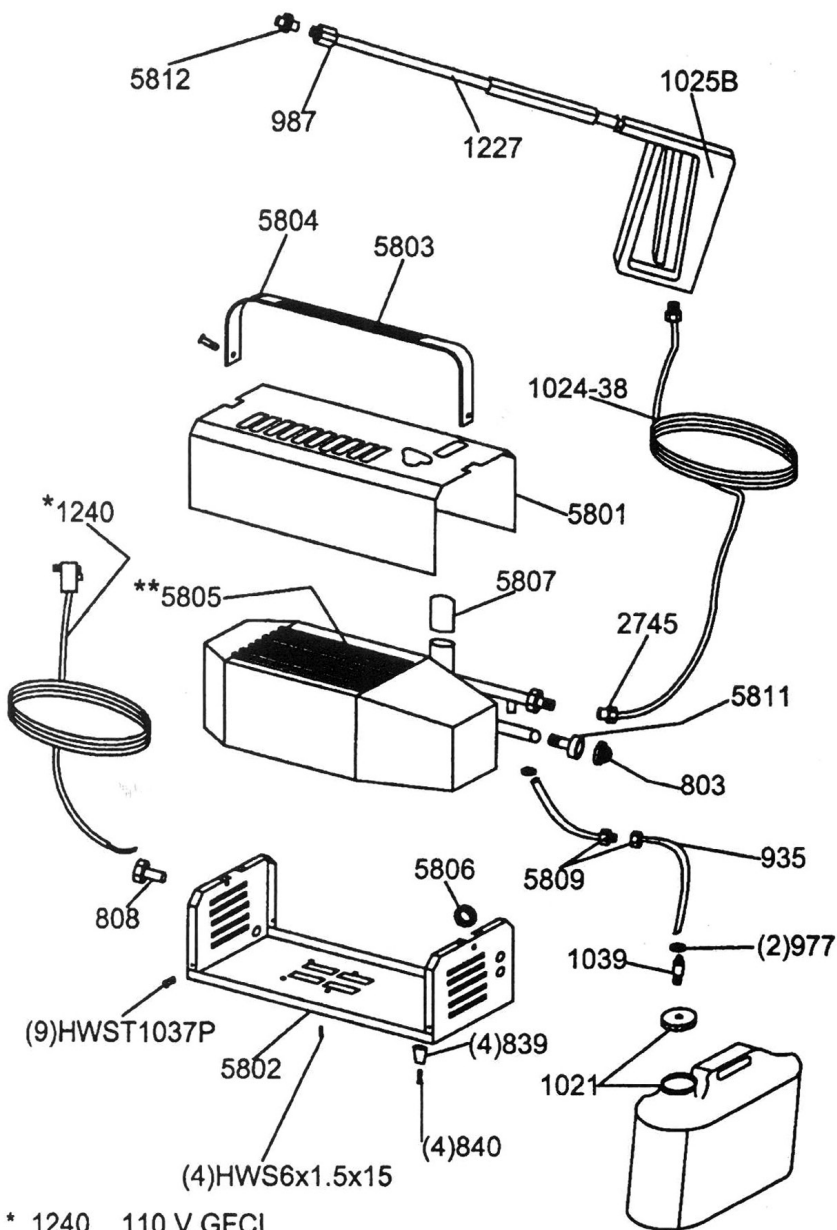
1. Periodically change oil in pump. First "break in" oil change after 30 hours of use. Change every six months or approximately 250 hours of use thereafter.
2. Do not run pump without water. This can damage the cylinder walls, and warp or crack the pump casing.
3. Do not use water more than 145°F (63°C). This will cause seal degradation. Your pump is equipped with a thermal relief valve. However, to optimize pump protection, you should still avoid water (or any other pumped fluid) that is too hot on the inlet side.
4. Never run pump if there is ice in pump or outlet hose. To avoid freezing in the pump, run antifreeze through the pump and hose(s) if stored overnight in freezing temperature. (The same bottle of antifreeze can be recycled numerous times. If it becomes discolored or diluted, replace it with new.)

**Best Care:** If the washer will be unused for a period of time (more than several days), even in warm temperatures, we recommend running antifreeze through pump and hose(s) before storage. Antifreeze greatly reduces the chance of rust, mineral deposits and other contaminants damaging the pump during storage.

## DISASSEMBLY: GPW-1200

The entire unit can be removed from the case by removing the cover, the four motor mounting screws, chemical dip tube and high pressure hose and then lifting entire motor-pump and plumbing assembly out of housing.

# GPW-1200

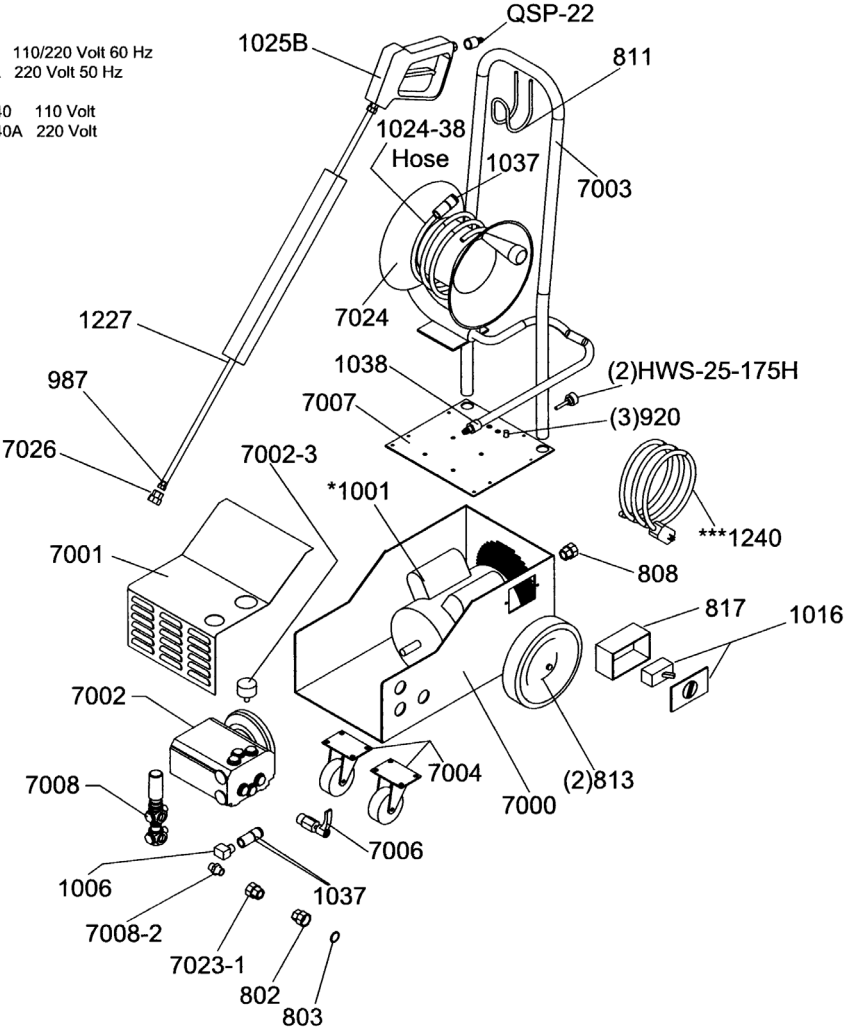


- \* 1240 110 V GFCI  
1240A 230 V GFCI  
\*\* 5805 Motor Pump 110 V  
5805A Motor Pump 230 V

# GPW-1400

\*1001 110/220 Volt 60 Hz  
\*1001A 220 Volt 50 Hz

\*\*\* 1240 110 Volt  
\*\*\* 1240A 220 Volt





## HVAC & FACILITY MAINTENANCE SOLUTIONS

---

Provides innovative maintenance solutions for a wide variety of industries including commercial HVAC, food and beverage processing, power generation and manufacturing.

**For Sales Call: 1-800-333-7467**  
**For Service Call: 1-800-370-2855**

### **GOODWAY® TECHNOLOGIES CORPORATION**

420 West Avenue, Stamford, CT 06902 USA

**Tel:** 203-359-4708 · **Toll-Free Tel:** 800-243-7932

**Fax:** 203-359-9601 · **Toll-Free Fax:** 800-359-9625

**Email:** [goodway@goodway.com](mailto:goodway@goodway.com)

**Visit:** [www.goodway.com](http://www.goodway.com)

**P/N: GPW-1200 & GPW-1400**

**©Copyright 2022 Goodway Technologies Corp., Stamford, CT USA**

Effective date May 23, 2022

Goodway is a Trademark of Crossford International.

Goodway reserves the right to improve products; contact the factory for the latest configuration and uses.