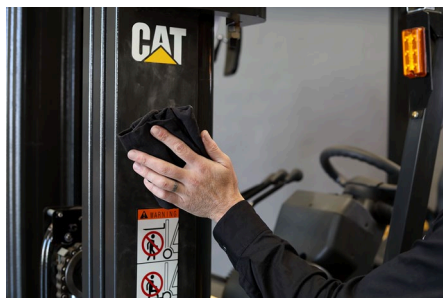


# HOW TO FIT MIRRORS with MAGNETS



## STEP 1:

### Wash Mast

Wash any oil/grease from mast



## STEP 2:

### Prepare Mast Surface

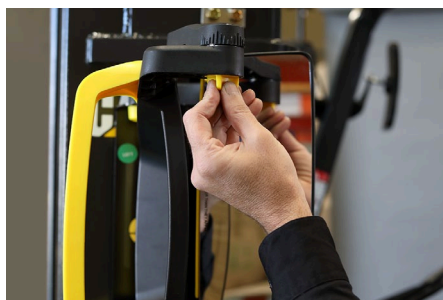
Wipe with alcohol wipe or equivalent solution



## STEP 3:

### Attach to Mast

Attach mirror to mast at drivers eye level, ensuring magnets take hold evenly/firmly. The mirrors now require focussing to optimise forward view



## STEP 4:

### Clutches

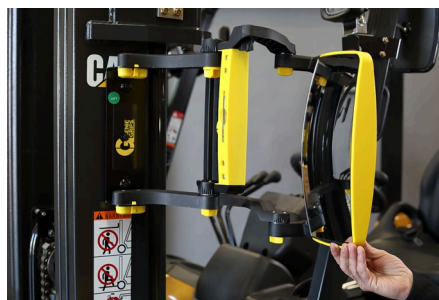
Make sure the mast is vertical (to ensure the outer mirror does not swing away with gravity), then loosen the FOUR clutch knobs



## STEP 5:

### Flat Mirror

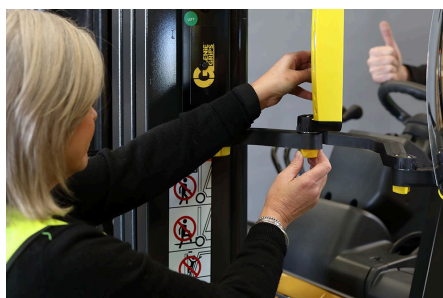
Always adjust flat mirror (inside mirror) first. Open to a right angle to the mast



## STEP 6:

### Parabolic Mirror

Open parabolic mirror (outer mirror) so back of mirror is facing the driver



## STEP 7:

### Two People (Recommended)

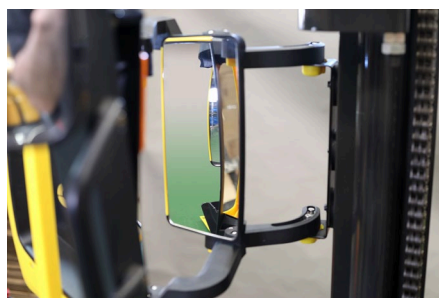
This process tends to be easier with two people - one to sit in the drivers seat and one to move the mirrors incrementally



## STEP 8:

### First Adjustment

With a partner, move flat mirror away from mast in increments so driver can view, then tighten clutches once in position



## STEP 9:

### Fine Adjustment

With partner, move parabolic mirror in increments until driver can see the tip of the forktyres in the flat mirror, tighten clutches once in position

Turn Over for Important Helpful Hints >

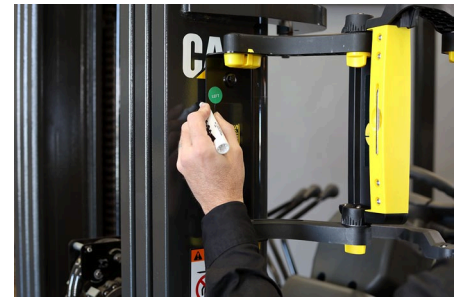
# HOW TO FIT MIRRORS with ADHESIVE TAPE



## IMPORTANT!

### BEFORE ATTACHING MIRRORS WITH INDUSTRIAL STRENGTH DOUBLE-SIDED TAPE:

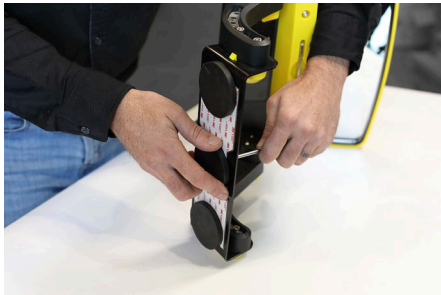
PERFORM STEPS 1-9 (overleaf) TO ENSURE AND MARK OUT CORRECT HEIGHT PLACEMENT OF MIRRORS ON MAST PRIOR TO AFFIXING WITH TAPE



#### STEP 10:

##### Mark Mast

Before removing mirrors, mark around the bracket on the mast



#### STEP 11:

##### Unscrew Magnets

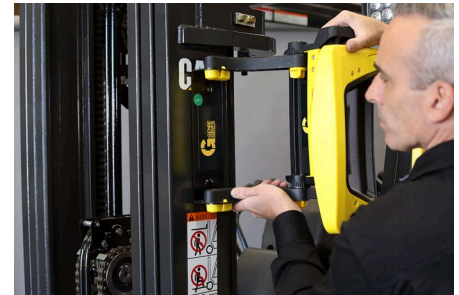
Using a Phillips head screw driver remove all three magnets from the bracket



#### STEP 12:

##### Peel Tape

Remove the tape from the back of the bracket



#### STEP 13:

##### Attach to mast

Place bracket on mast where the markings are and press firmly to secure

## IMPORTANT HELPFUL HINTS:

When determining the bracket mounting position, it is important to ensure that:

- the driver can spot the tynes when seated
- the upward travel of the tynes will not be impeded by the mirrors
- the mirror assembly does not touch the cabin when the mast is tilted back

The state-of-the-art clutch design enables the mirrors to be set and locked. If the mirror is knocked or moved, it can be easily returned to the set position.