



Service Parts Manual Commercial Pearl  
Ice Machine



GEMU09090

3/17/2026

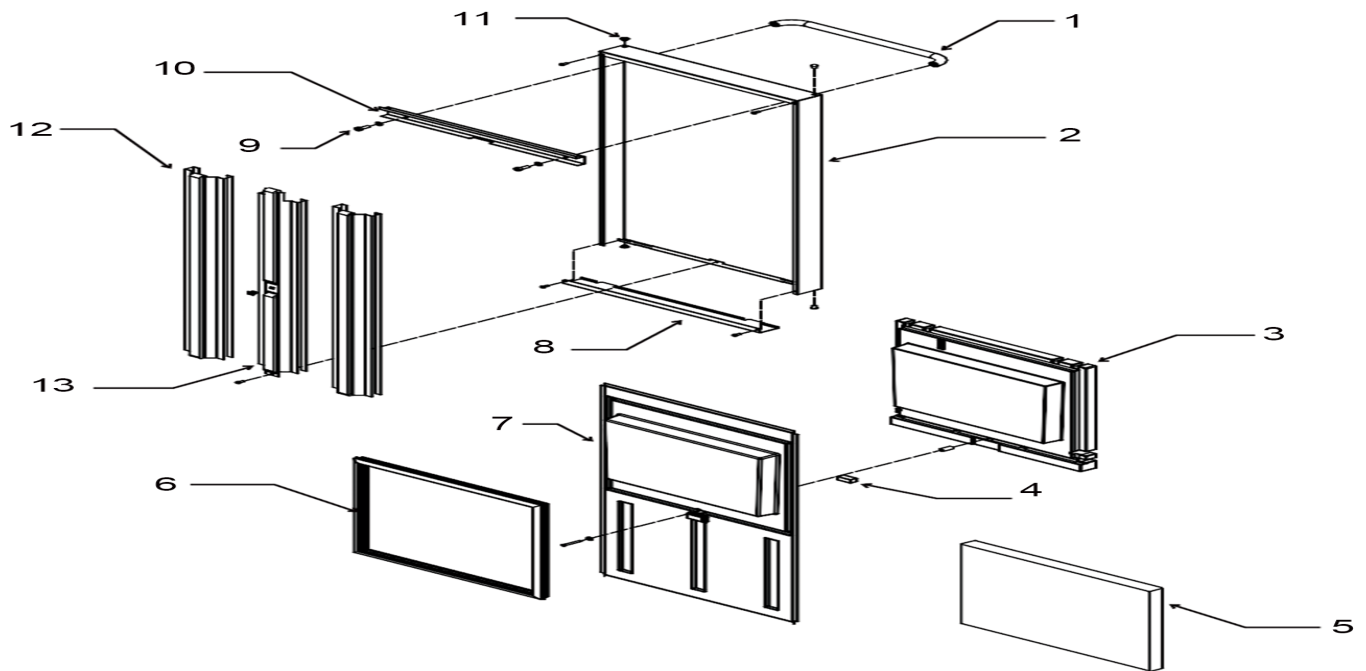
# Service Parts

## Table of Contents

Door Components.....	3
Cabinet.....	4
Storage Bin and Ice Chute.....	5
Reservoir, Water Sensor, and Misc.....	6
Refrigeration.....	7
Under Bin Parts.....	8
Ice Making Section.....	9
Control System.....	10
Wiring Diagram.....	11
Schematic Drawing.....	12

# Service Parts

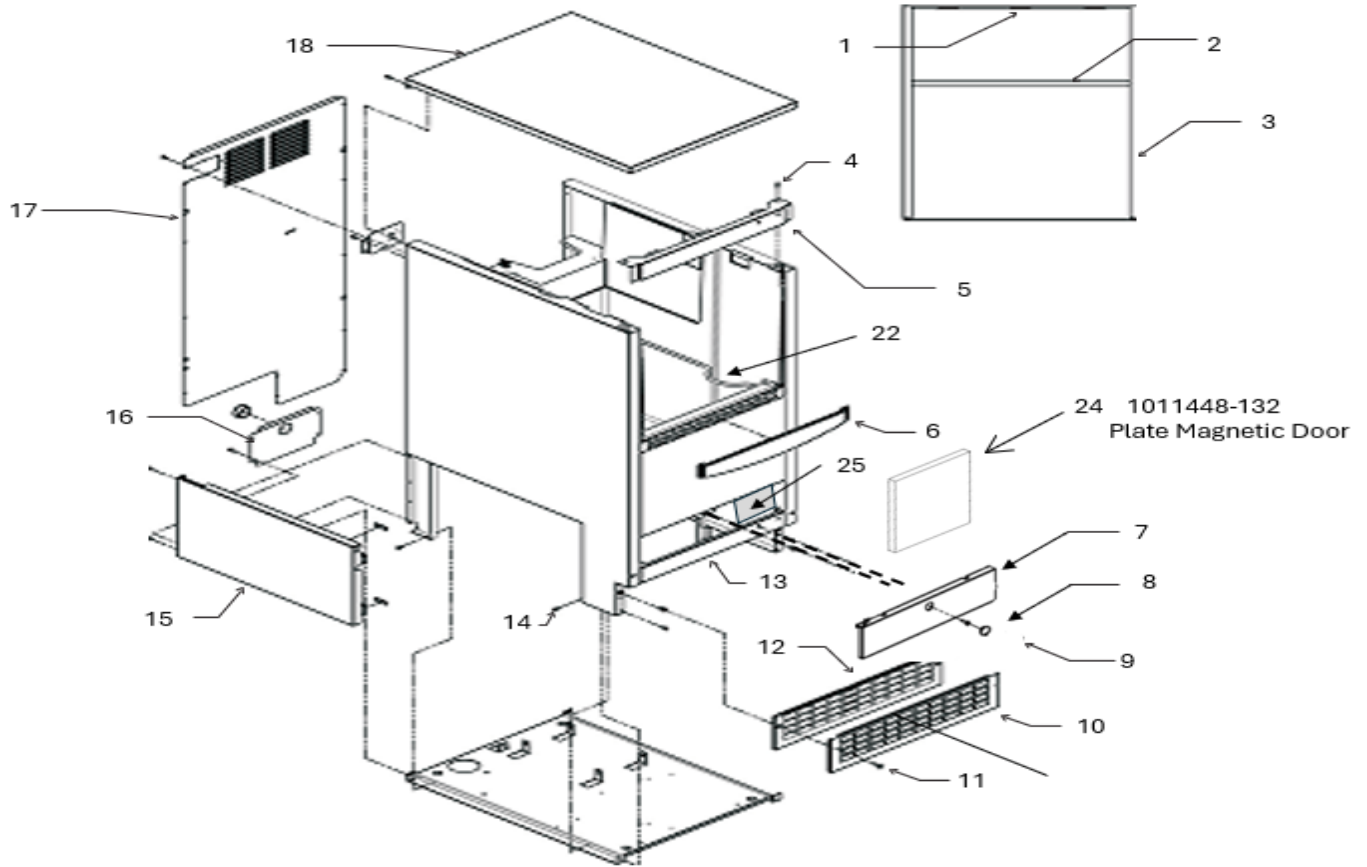
## Door Components



Item Number	Part Number	Description
1	1011448-01	Handle, Door
2	1011448-02	Door Panel
3	1011448-03	Insulation, Upper
4	1011448-04	Magnet, Door
5	1011448-05	Insulation, Lower
6	1011448-06	Door Gasket
7	1011448-07	Liner, Door
8	1011448-08	Door Bottom
9	1011448-09	Screw, Handle
10	1011448-10	Bracket, Door Handle
11	1011448-11	Bushing, Door Hinge, Same on Bottom
12	1011448-12	Door Support
13	1011448-13	Door Support, Center
14	1011448-14 (Not Pictured)	Compleat Door, Assembled (Includes all parts)
Not Shown	1011448-117	Hinge Pin, Door to Hinge (Threaded Hinge Pin)
15	1011448-128	Door Cap

# Service Parts

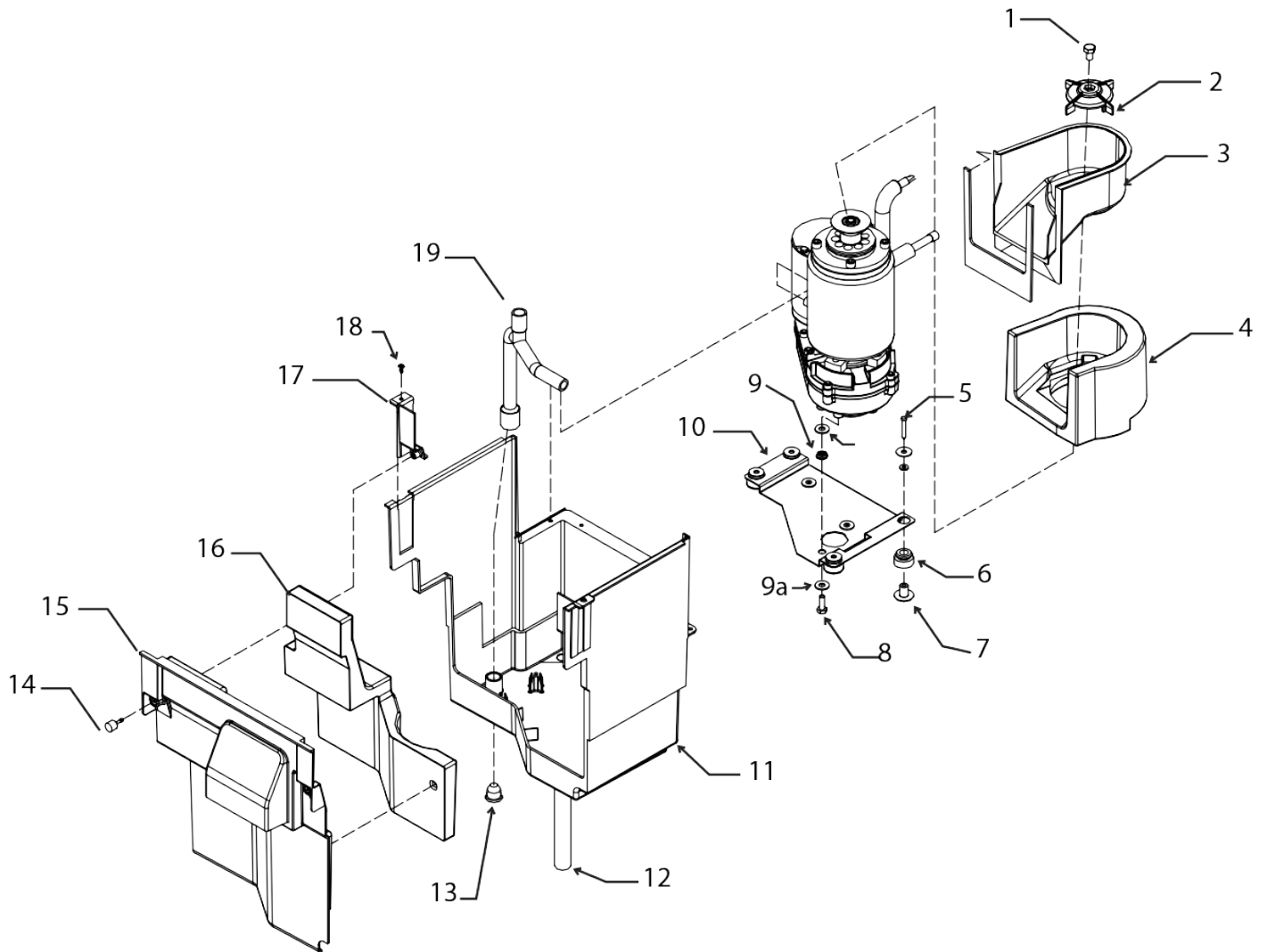
## Cabinet



Item Number	Part Number	Description	Item Number	Part Number	Description
1	1011448-15	Gasket, Top Panel	14	9031046	Screw
2	1011448-16	Gasket, Top Panel	15	1011448-30	Left Side Service Panel
3	1011448-17	Gasket, Top Panel	16	1011448-31	Drain Panel
4	1011448-18	Screw	17	1011448-32	Back Panel
5	1011448-111	Top Hinge Bracket	18	1011448-33	Top Panel Only
6	1011448-21	Inlay	18a	1011448-34	Insulation Top Panel (Not Shown)
7	1011448-22	Front Service Panel	19	1011448-113	Hinge, Top Right
8	1011448-03	Domed Hole Plug	20	1011448-114	Hinge, Bottom Right
9	1011448-24	Screw	21	1011351-43	Screw Receptacle (Not Shown)
10	1011448-25	Kick Plate Cover	22	1011448-121	Scoop Holder
11	1011448-26	Screw	23	9051127-02	Scoop (Not Shown)
12	1011448-27	Kick Plate	24	1011448-132	Magnetic Plate Holder
13	1011448-112	Bottom Hinge Bracket	25	1011448-204	Bin Thermostat

# Service Parts

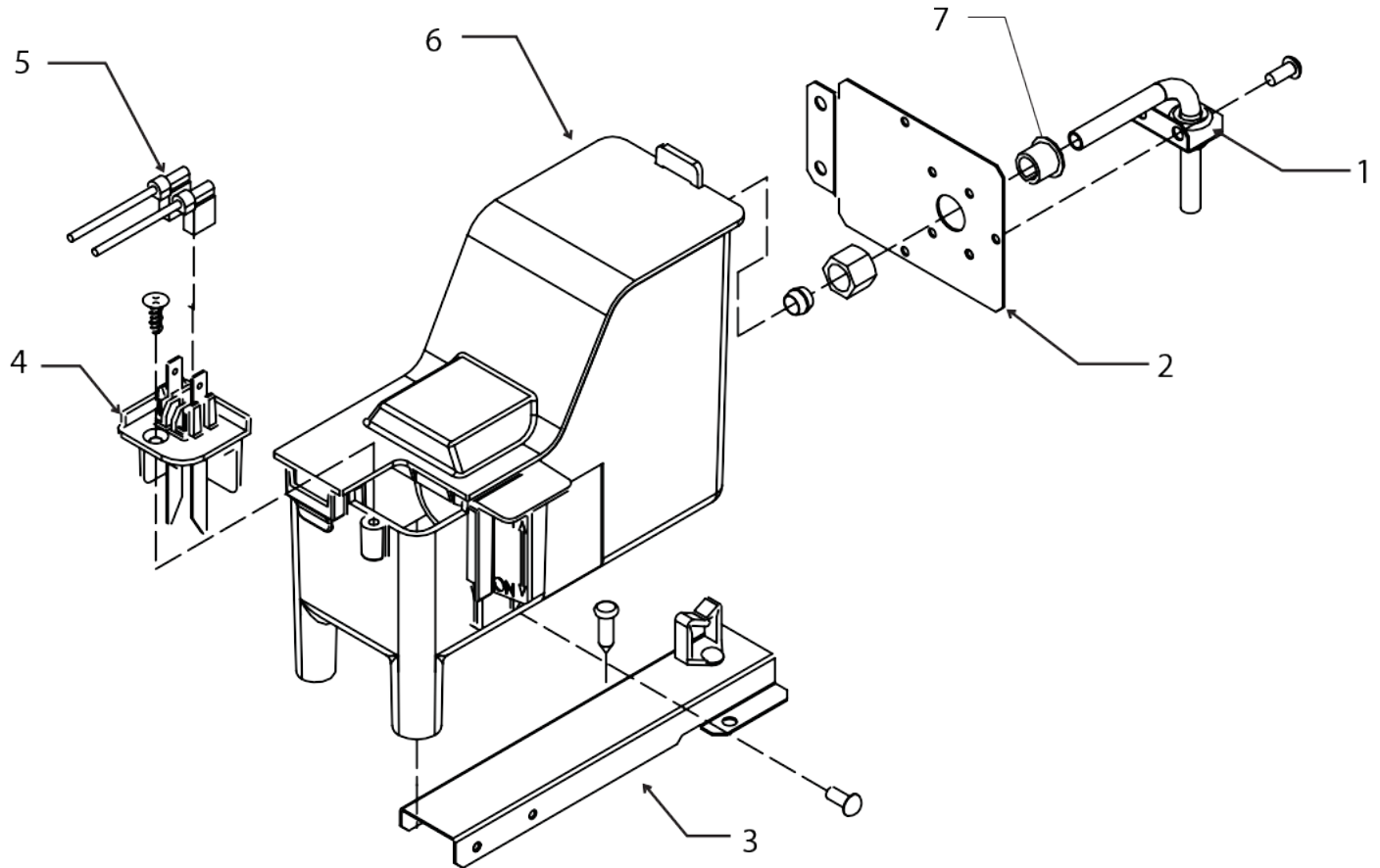
## Storage Bin and Ice Chute



Item Number	Part Number	Description	Item Number	Part Number	Description
1	1011448-35	Screw, 5/16-18	11	1011448-44	Mounting Plate Frz. Supp
2	1011448-36	Ice Sweep	12	9051610-01	Drain
3	1011448-118	Chute	13	1011448-45	Drain Plug
4	Part of Item 3	Chute Insulation	14	101148-47	Thumb Screw
5	1011448-38	Screw	15	1011448-48	Cover
6	1011448-39	Grommet	16	1011448-49	Support Bracket, Left
7	1011448-40	Flanged Bushing	17	1011448-50	Support Bracket, Right
8	1011448-41	Cap Screw	18	1011448-18	Screw
9	1011448-42	Vibration Grommet	19	1011448-51	Tube, Reservoir to Evap
10	1011448-43	Washer	20	1011448-120	Plastic Splash Divider

# Service Parts

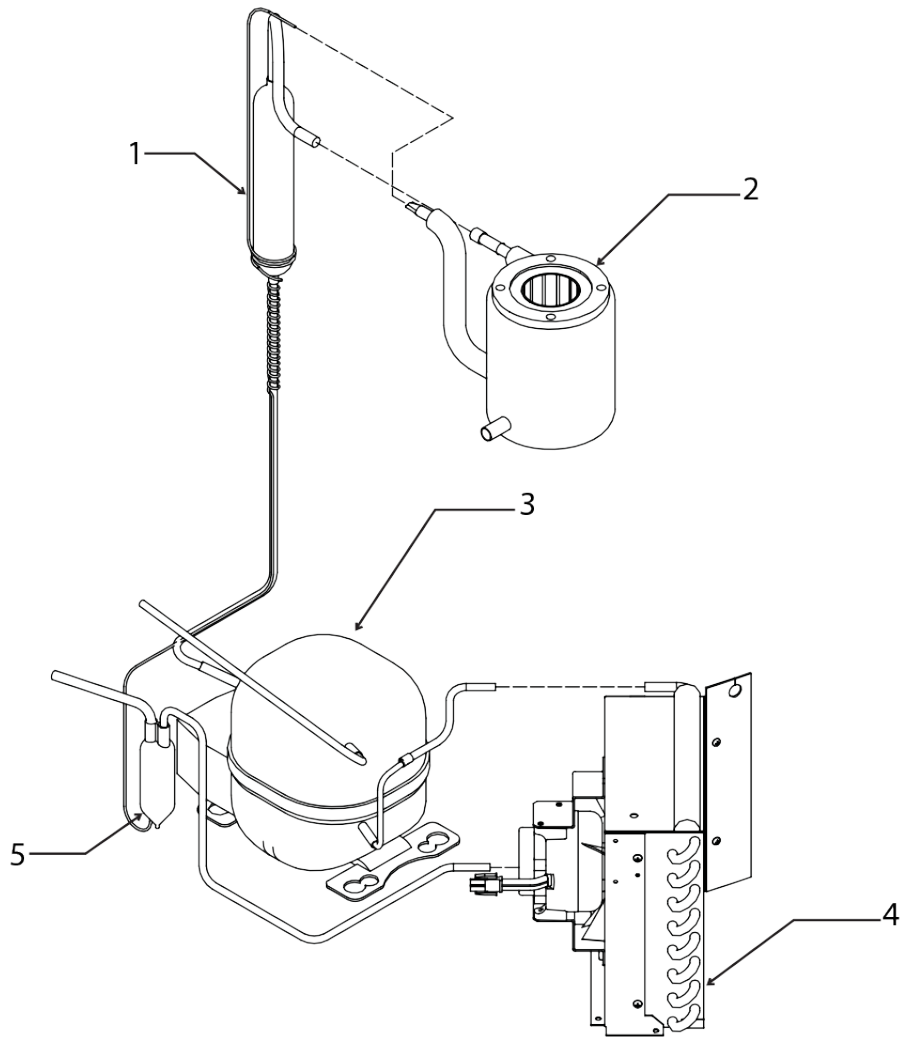
## Reservoir, Water Sensor, and Misc.



Item Number	Part Number	Description
1	1011448-52	Brace
2	1011448-53	Bracket
3	1011448-54	Reservoir Mounting Bracket
4	1011448-55	Water Level Sensor
5	1011448-56	Water Sensor Harness
6	1011448-57	Reservoir with Valve and Cover
6a	1011448-116	Float Valve Only (Not Shown)
7	1011351-50	Bushing
Misc:	1011448-59	12 Pack of Pre-Mixed Squirt Bottle of Clear 1 Scale Remover

# Service Parts

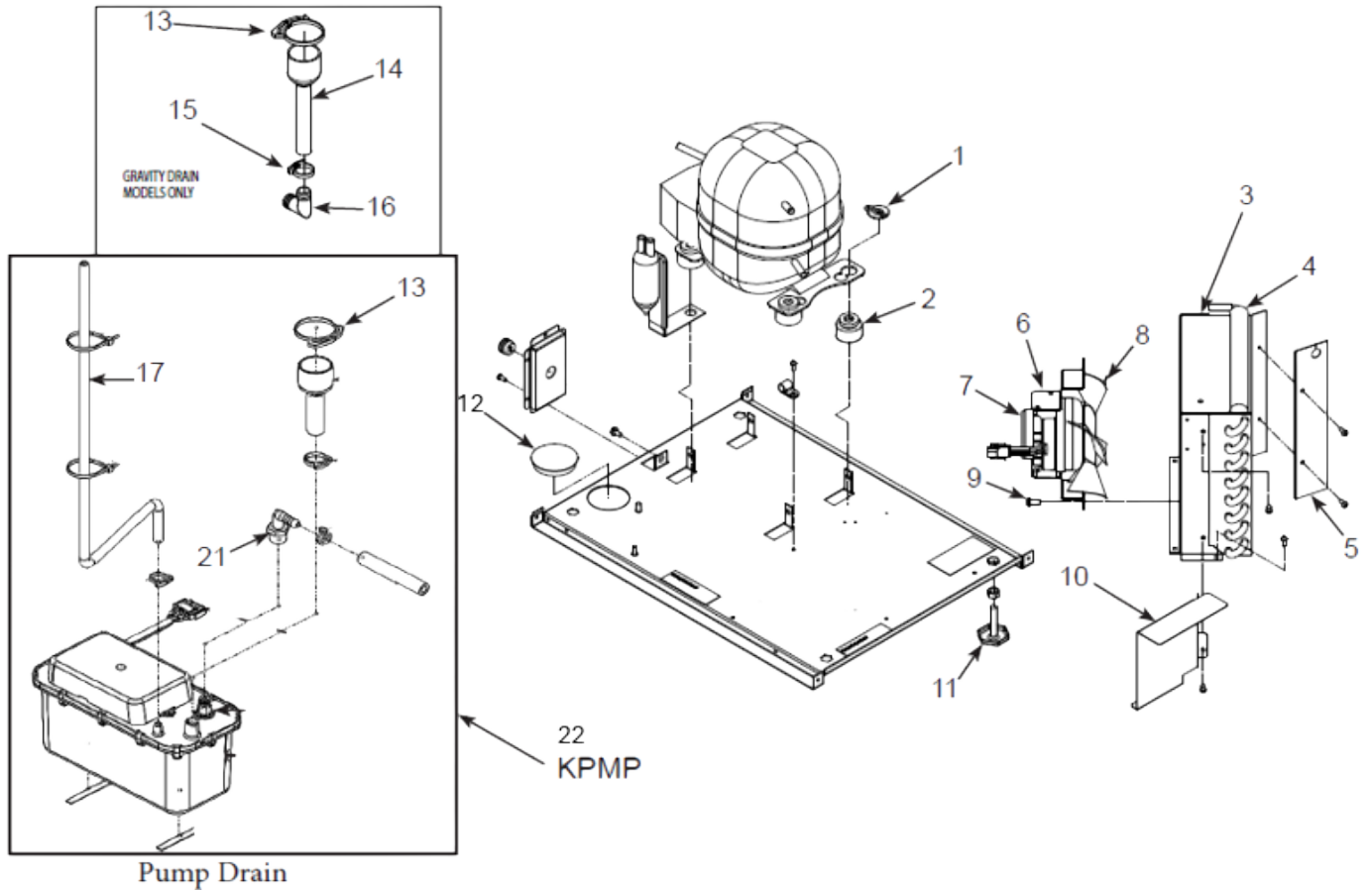
## Refrigeration



Item Number	Part Number	Description
1	1011448-61	Suction Line w/Cap Tube
2	1011448-62	Evaporator
3	1011448-208	Compressor
		Includes Overload, Relay, and Drier
3a	1011448-216	Overload
3b	1011448-217	Relay
4	1011448-66	Condenser
5	1011448-115	Drier

# Service Parts

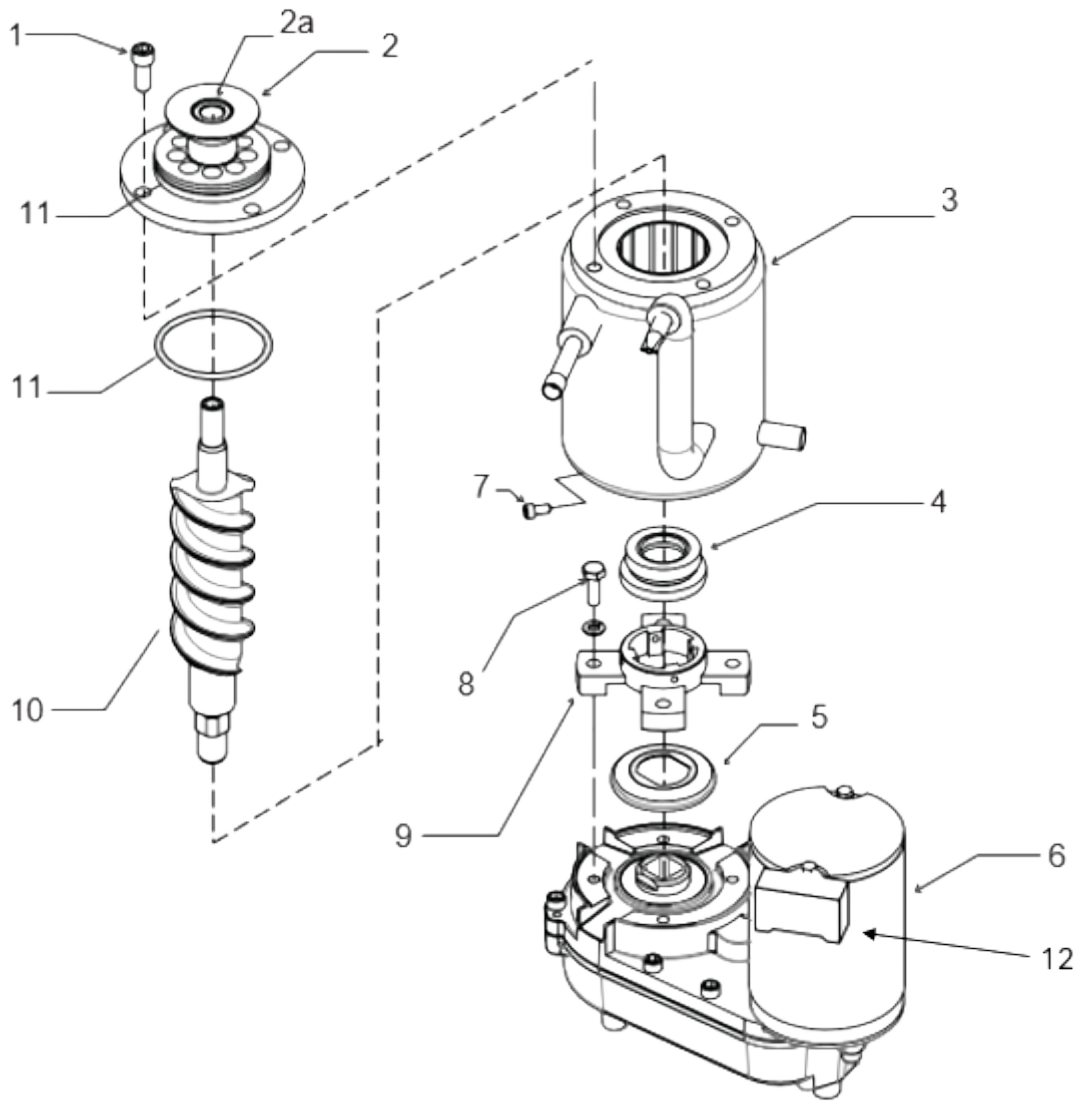
## Under Bin Parts



Item Number	Part Number	Description	Item Number	Part Number	Description
1	1011448-68	CLIP	10	1011448-78	Pump Model Rain Shield
1a	1011448-69	Washer	11	1011448-79	Leg Leveler
2	1011448-70	Grommet	12	1011448-80	Hole Plug
3	1011448-71	Shroud	13	1011448-81	Hose Clamp
4	1011448-72	Gasket - Order 1, cut to fit	14	1011448-82	Drain Hose
5	1011448-73	Air Baffle	15	1011447-07	Hose Clamp
6	1011448-74	Fan Motor Bracket	16	1011448-83	Elbow
7	1011448-75	Fan Motor	21	1011448-86	Elbow
8	1011448-76	Fan Blad	22	KPMP	Pump Kit
9	1011448-77	Screw			

# Service Parts

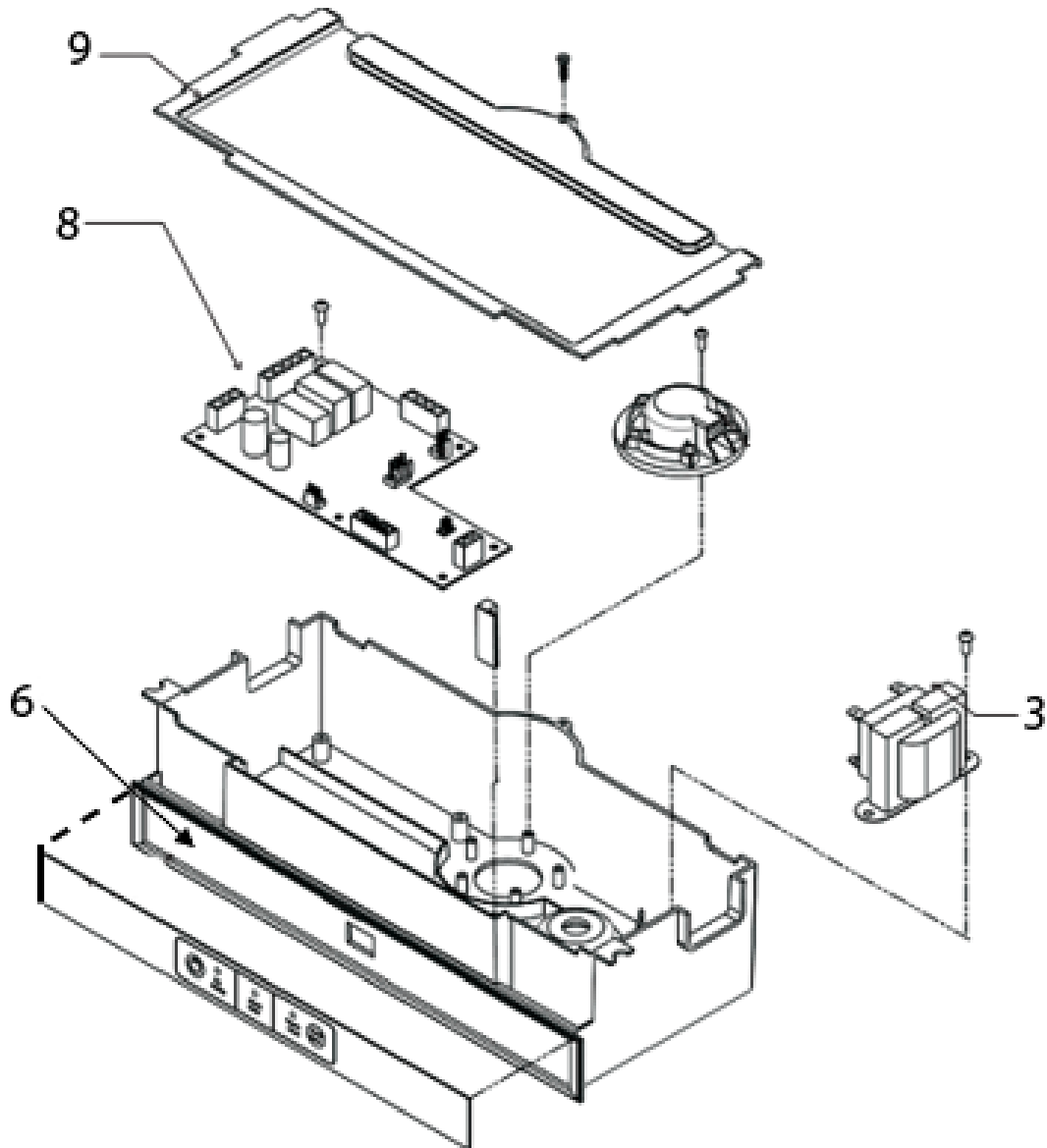
## Ice Making Section



Item Number	Part Number	Description	Item Number	Part Number	Description
1	1011380-44	Cap Screw	7	1011448-100	Cap Screw
2	1011448-220	Breaker w/Bearing	8	1011448-101	Cap Screw
2a	1011448-221	Bearing Only	9	1011448-102	Adapter
3	1011448-62	Evaporator	10	1011448-103	Auger
4	1011448-95	Water Seal	11	1011448-104	O-Ring
5	1011448-96	Water Shed	12	1011448-99	Capacitor 7.5 MFD
6	1011448-98	Gear Reducer, Complete			

# Service Parts

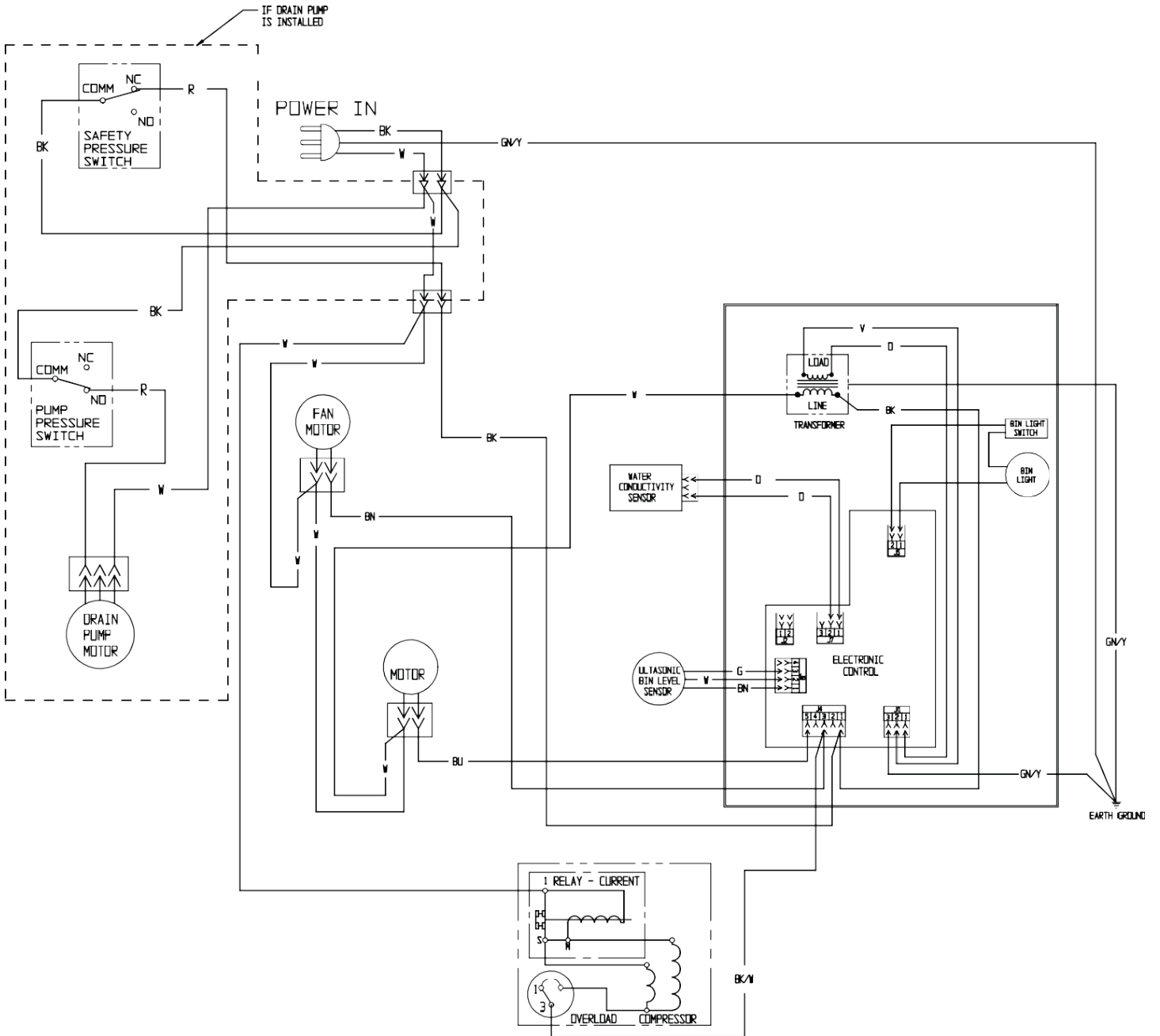
## Control System



Item Number	Part Number	Description
3	1011448-107	Transformer
6	1011448-108	Control Panel
8	1011448-109	Controller
9	1011448-110	Cover
10	1011448-125	Control Box (Black)

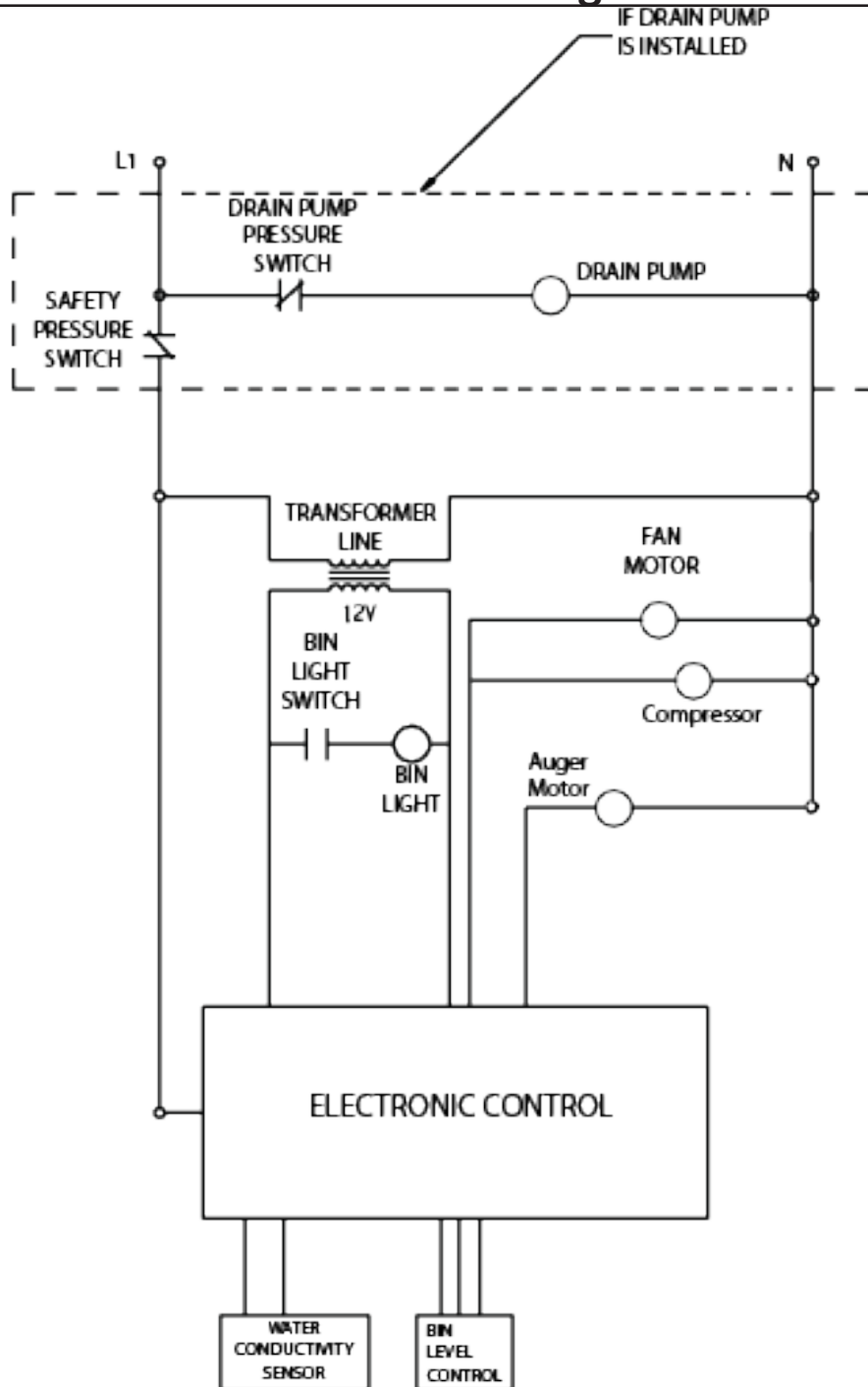
# Service Parts

## Wiring Diagram



# Service Parts

## Schematic Diagram



SWITCHES ON THIS UNIT SHOWN  
IN FREEZE CYCLE WITH DRAIN  
PUMP IN OPERATION AND BIN  
DOOR CLOSED



**Ice-O-Matic<sup>®</sup>**

THE CHOICE IS CLEAR

11100 East 45th Avenue  
Denver, CO 80239  
866.PUREICE  
[iceomatic.com](http://iceomatic.com)