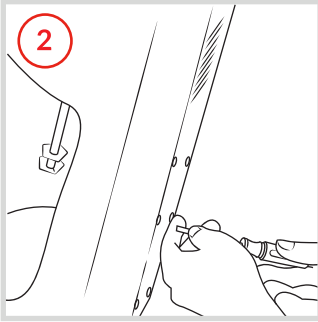
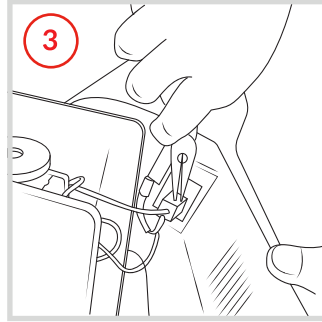


**1** Unplug mixer.

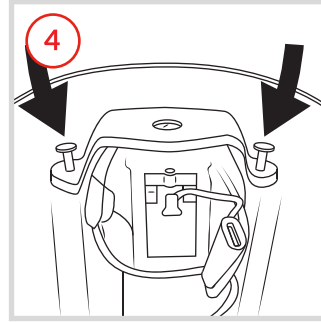


Use a screwdriver to remove the six screws on the back of the unit.

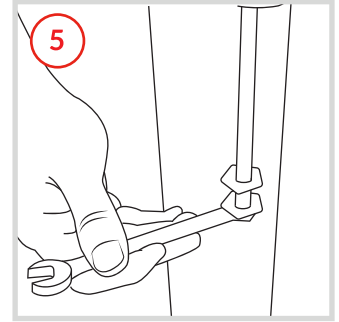


Remove the back cover by pulling it from the housing and unplugging the motor from the top of the cover.

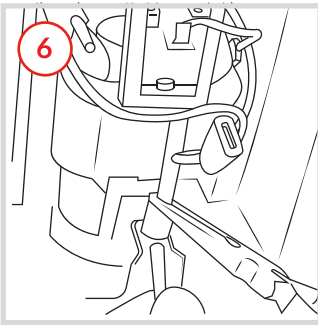
**NOTE:** remember where each plug belongs for reassembly



Use a screwdriver to remove the two screws from the top plate holding the motor in place

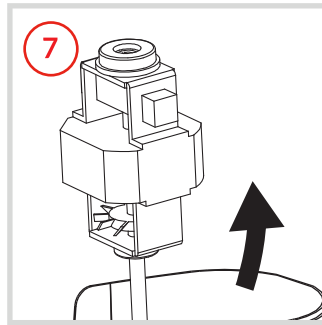


Remove the agitators from the spindle using a wrench

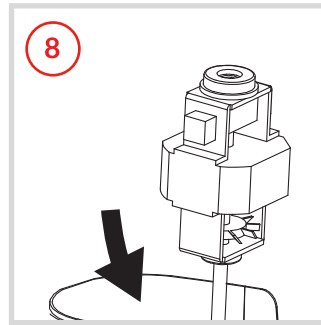


Unplug the motor from the housing.

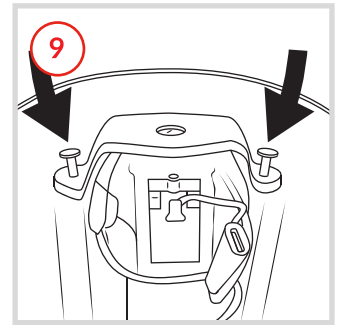
**NOTE:** remember where each plug belongs for reassembly.



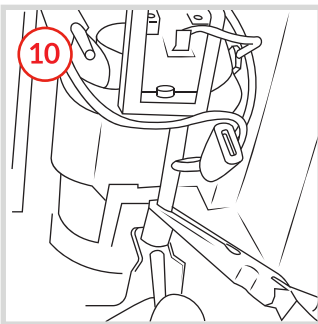
Lift the motor assembly straight up and out of the housing.



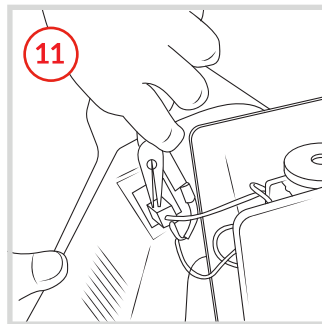
Lower the new motor assembly into the housing by guiding the spindle through the hole.



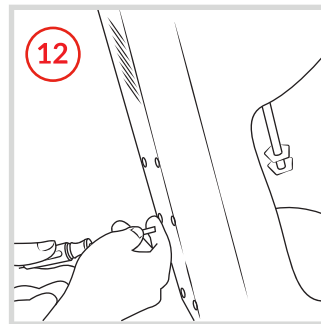
Secure the top plate using a screwdriver and the original two screws.



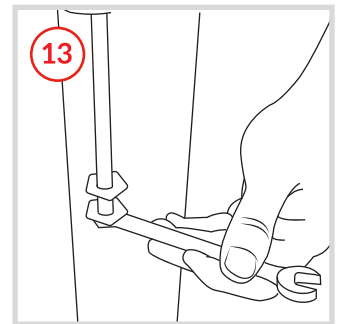
Plug the new motor into the housing just as it was before Step 6



Plug the new motor into the back cover just as it was before Step 3.



Secure the back cover using a screwdriver and the original six screws.



Secure the agitators to the spindle using a wrench.