



Vestil Manufacturing Corp.

2999 North Wayne Street, P.O. Box 507, Angola, IN 46703

Telephone: (260) 665-7586 Toll Free: (800) 348-0868

Fax: (260) 665-1339

www.vestilmfg.com

info@vestil.com

FTTM-2 FORK TRUCK TRAILER MOVER



Receiving Instructions

After delivery, remove the packaging from the product. Inspect the product closely to determine whether it sustained damage during transport. If damage is discovered, record a complete description of it on the bill of lading. If the product is undamaged, discard the packaging.

NOTE: The end-user is solely responsible for confirming that product design, use, and maintenance comply with laws, regulations, codes, and mandatory standards applied where the product is used.

Technical Service & Replacement Parts

For answers to questions not addressed in these instructions and to order replacement parts, labels, and accessories, call our Technical Service and Parts Department at (260) 665-7586. The department can also be contacted online at http://www.vestilmfg.com/parts_info.htm.

Electronic Copies of Instruction Manuals

Additional copies of this instruction manual may be downloaded from <https://www.vestil.com/page-manuals.php>.

Table of Contents

| | Page |
|--|-------|
| Signal Words..... | 2 |
| Safety Instructions..... | 2 |
| Specifications..... | 3 |
| Exploded View & Bill of Materials..... | 4 |
| National Standards..... | 4 |
| Using the Trailer Mover..... | 4 - 5 |
| Record of Satisfactory Condition..... | 5 |
| Inspections & Maintenance..... | 5 |
| Labeling Diagram..... | 6 |
| Limited Warranty..... | 7 |

SIGNAL WORDS

SIGNAL WORDS appear in this manual to draw the reader's attention to important safety-related messages. The following are signal words used in this manual and their definitions.

⚠ DANGER

Identifies a hazardous situation which, if not avoided, **WILL** result in **DEATH** or **SERIOUS INJURY**. Use of this signal word is limited to the most extreme situations.

⚠ WARNING

Identifies a hazardous situation which, if not avoided, **COULD** result in **DEATH** or **SERIOUS INJURY**.

⚠ CAUTION

Indicates a hazardous situation which, if not avoided, **COULD** result in **MINOR** or **MODERATE** injury.

NOTICE

Identifies practices likely to result in product/property damage, such as operation that might damage the product.

SAFETY INSTRUCTIONS

Vestil strives to identify foreseeable hazards associated with the use of its products, but no manual can address every conceivable risk. Minimize the likelihood of injury by observing the hazards identified below and by inspecting and maintaining the product as instructed in [INSPECTIONS & MAINTENANCE](#) on p. 6.

⚠ WARNING

Risks of serious personal injuries or death.

- **Read and understand the entire manual before assembling, using or servicing the device.** Read the manual to refresh your understanding of proper use and maintenance procedures whenever necessary.
- DO NOT exceed the capacity. See Label 1021 in [LABELING DIAGRAM](#) on p. 6.
- Inspect the product as described in the [INSPECTIONS & MAINTENANCE](#) on p. 5. Restore the product to satisfactory condition before using it.
- Before attaching a trailer (or other towable equipment) to the hitch, inspect the receiver, hitch, and retaining pin. Confirm that all parts are sound.
- ONLY use this attachment to **push** hitched loads. DO NOT pull loads.
- DO NOT attempt to pull a trailer UNLESS the tongue/hitch coupler of the trailer seats properly on the selected ball hitch of your FTTM. The coupler must also latch properly.
- DO NOT use this product to transport *anything* but trailers or other towable equipment.
- DO NOT use this product to push a trailer if people are onboard. This device should only be used to push unoccupied equipment.
- DO NOT allow people to sit on or ride on the attachment.
- DO NOT leave an attached trailer unattended. Always move a trailer to its desired location, properly immobilize it, and disengage it from the tow ball.
- DO NOT modify the unit without written approval from Vestil. Unapproved modifications automatically void the [LIMITED WARRANTY](#) on p. 7, and might make the unit unsafe to use.
- ONLY raise the forks as high as necessary to bring the trailer into a horizontal (level) position.
- ONLY use the attachment to move trailers across level ground. DO NOT use the attachment to push trailers up or down sloped ground.
- OSHA regulations require lift truck attachments to be approved by either the manufacturer of your lift truck or a professional engineer before they are used. Mark your lift truck to identify the FTTM-2 attachment. The new markings should also display the approximate weight of the truck-and-attachment combination at maximum fork elevation with load laterally centered. Capacity, operation, and maintenance instruction plates, tags, or decals must be changed accordingly. DO NOT use this attachment if a load will exceed the load center rating provided by your lift truck manufacturer.
- DO NOT remove or obscure any label. Verify the placement and legibility of all labels. See [LABELING DIAGRAM](#) on p. 6. DO NOT use this device UNLESS all product labels are readable and undamaged.

NOTICE

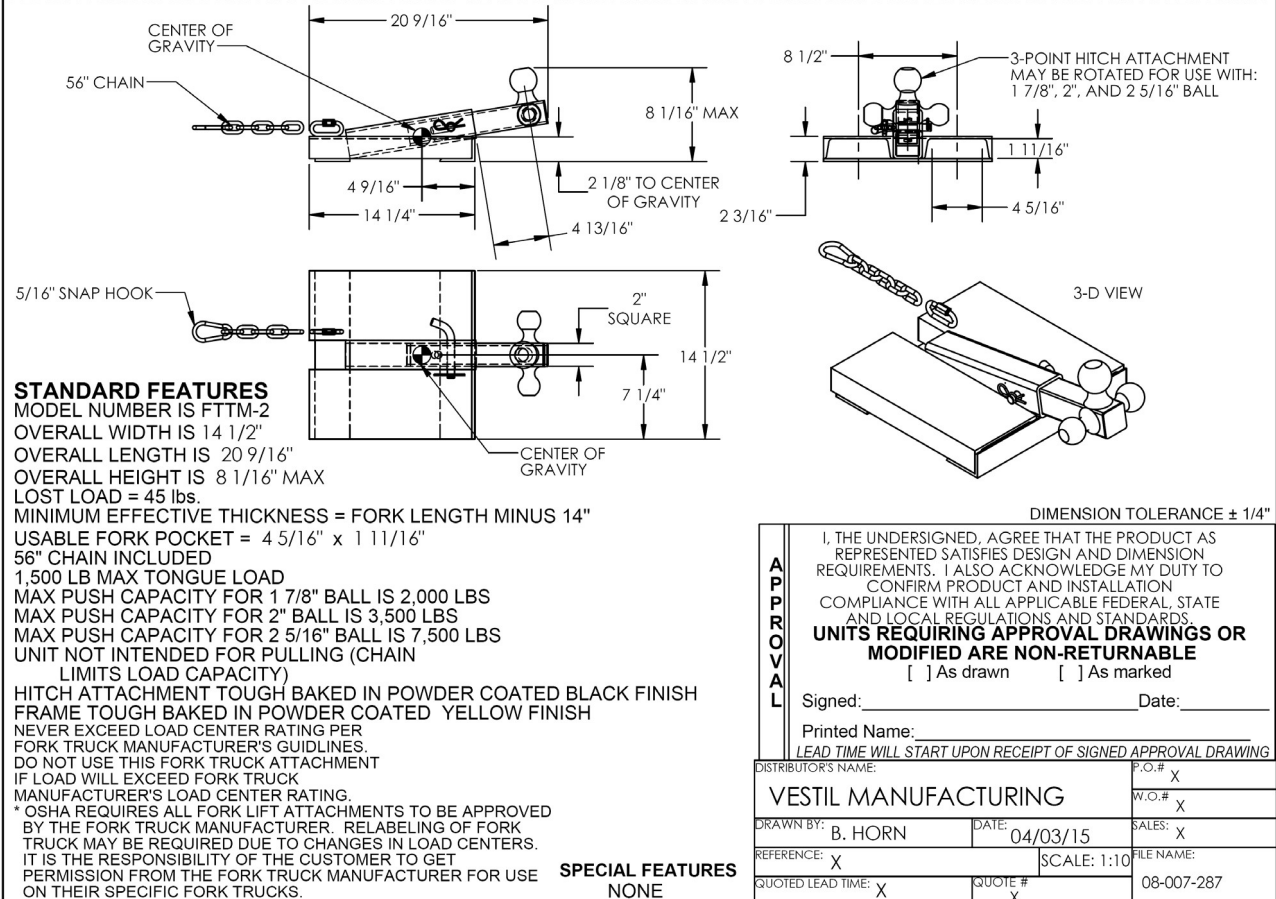
- Proper use and maintenance are essential for this product to function properly.
- Inspect the unit as instructed in the [INSPECTIONS & MAINTENANCE](#) section on p. 5.
- Use the product in accordance with the instructions in this manual.
- Always store the device in a dry location.

SPECIFICATIONS

A specifications document for model FTTM-2 fork-mounted trailer mover is available online to anyone who visits Vestil's website. Specifications include dimensions, net weight, and capacity information. To access the appropriate specifications document, navigate to this webpage: <https://www.vestil.com/product.php?FID=482>. Scroll the page to the "Product Specifications Table". Click the button in the "PDFs" column that looks like a pencil inside a box. A PDF file will open. This file is the specifications document. Print a copy of the drawing and keep it with your copy of this manual. The following is an exemplar specifications document.

FORK LIFT HITCH - FTTM-2

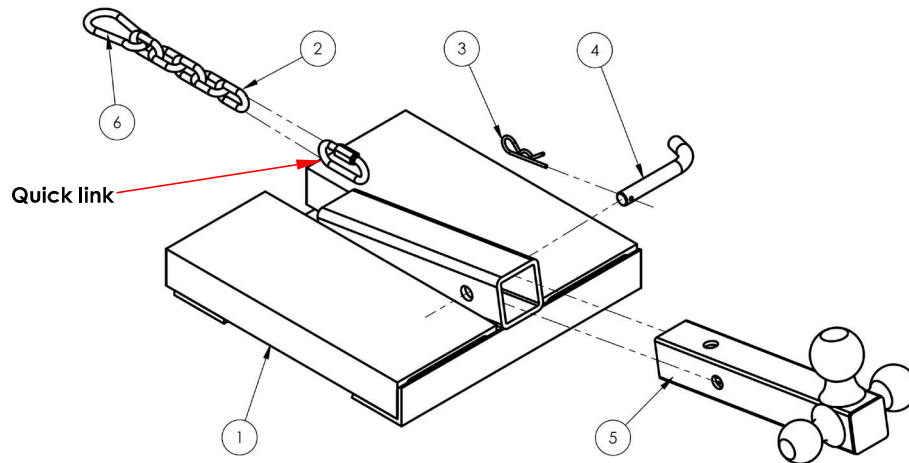
*** ANY ADDITIONS, DELETIONS, OR OMISSIONS MUST BE CORRECTED ON THIS DRAWING AS THIS DRAWING WILL BE CONSIDERED ALL INCLUSIVE ***
ALL GRAPHICS PROVIDED ARE FOR REFERENCE ONLY. IF CERTAIN DIMENSIONS ARE CRITICAL PLEASE VERIFY THOSE DIMENSIONS WITH YOUR SALESPERSON



| Model | Overall width | Overall length | Overall height | Lost load | Usable fork pocket | Pushing capacity (varies with ball hitch used) | Net Weight |
|--------|---------------|----------------|----------------|-----------|--------------------|---|------------|
| FTTM-2 | 14 1/2" | 20 9/16" | 8 1/16" | 45 lb. | 4 5/16" x 1 11/16" | 1 7/8" 2,000 lb. 2" 3,500 lb. 2 5/16" 7,500 lb. | 45 lb. |

| Ball Hitches | Ball Diameters | Shank Diameter | Maximum Rated Load | Net Weight |
|--------------|-------------------------|--|-------------------------------------|------------|
| HITCH-3B | 1 7/8" 2" 2 5/16" | Hitch balls permanently mounted to 2"x2"x12" square tube | 2,000 lb. 3,500 lb. 7,500 lb. | 12 lb. |

EXPLODED VIEW AND BILL OF MATERIALS (08-006-287)



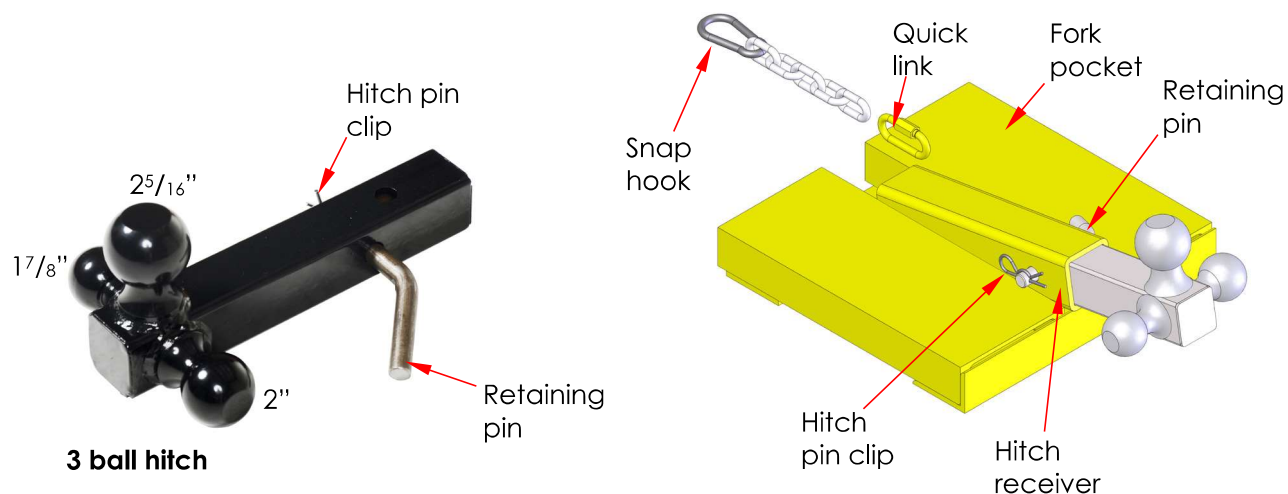
| Item | Part no. | Description | Qty. | Item | Part no. | Description | Qty. |
|------|------------|--|------|------|------------|-------------------------------|------|
| 1 | 08-514-259 | Weldment, frame | 1 | 4 | 99-112-030 | Pin, trailer hitch, retaining | 1 |
| 2 | 09-145-018 | $\frac{5}{16}$ " chain 56" long | 1 | 5 | 99-001-007 | 3 ball hitch | 1 |
| 3 | 45286 | #11 hitch pin clip, $\frac{1}{8}$ " x $2\frac{5}{8}$ " | 1 | 6 | 08-145-041 | Snap hook, $\frac{5}{16}$ " | 1 |

NATIONAL STANDARDS

According to US Federal Occupational Safety and Health Administration (OSHA) Rule 1910.178 (29 CFR 1910.178; the "Rule"), this device is a front end attachment for a lift truck whenever it is mounted on the forks of a lift truck. The Rule incorporates American National Standard ANSI/ITSDF B56.1 (the "Standard") published by the Industrial Truck Standards Development Foundation (ITSDF) on its website (www.itsdf.org). The standard is freely downloadable at <http://www.itsdf.org/cue/b56-standards.html>. Before putting this device into service, you must acquire a copy of the Standard. Apply all relevant parts of Part II: For the User. If instructions in this manual conflict with instructions in the Standard then the instructions in the Standard should be applied. Please contact our [TECHNICAL SERVICE](#) department if you believe that these instructions conflict with the Standard. Contact information for [TECHNICAL SERVICE](#) appears on the cover page of this manual.

USING THE TRAILER MOVER

Step 1: Select the appropriate tow ball and insert the hitch into the hitch receiver with the chosen tow ball facing upwards. Align the pin holes in the hitch with the pin holes in the receiver. Insert the retaining pin through the pin holes and secure it in place with the hitch pin clip.



Step 2: Slide the attachment onto the forks of your lift truck with the ball hitch pointing upwards. Push the attachment as far onto the forks as possible.

Step 3: Fasten the safety chain to the carriage of your forklift. There must be no slack in the chain. Remove slack by wrapping the safety chain around the carriage as many times as necessary. Attach the snap hook on the free end of the chain to the quick link (welded to the FTTM frame). The chain must not be able to disconnect from the fork truck carriage.

Step 4: Connect the ball hitch coupler of the trailer (or other towable equipment) to the tow ball. Raise the forks sufficiently to level the trailer. Push the trailer to the intended location with the attachment. DO NOT use the FTTM to *pull* trailers/equipment.

RECORD OF SATISFACTORY CONDITION (THE “RECORD”)

Before putting the trailer mover into service, record its condition. Thoroughly photograph the unit from multiple angles. Take close-range photographs of the hitch receiver and trailer hitch pin, all of the labels, and the safety chain and quick link. Mount the device on the forks of your fork truck and use it to move a trailer or other piece of towable equipment. Describe all sounds produced by the device while pushing the load. Photograph the trailer mover while coupled to the load. Collect all photographs and writings in a file. Mark the file appropriately to identify it. Compare the results of all inspections to this RECORD to determine whether the device is in satisfactory condition. Do not use the trailer mover unless it is in satisfactory condition. Purely cosmetic changes, like damaged paint or powdercoat are not changes from satisfactory condition. However, touchup paint should be applied to all affected areas as soon as the finish is damaged.

INSPECTIONS & MAINTENANCE

Compare the results of all inspections to the [RECORD](#) to determine whether the unit is in satisfactory condition or requires repair.

Before each use, visually inspect the following components:

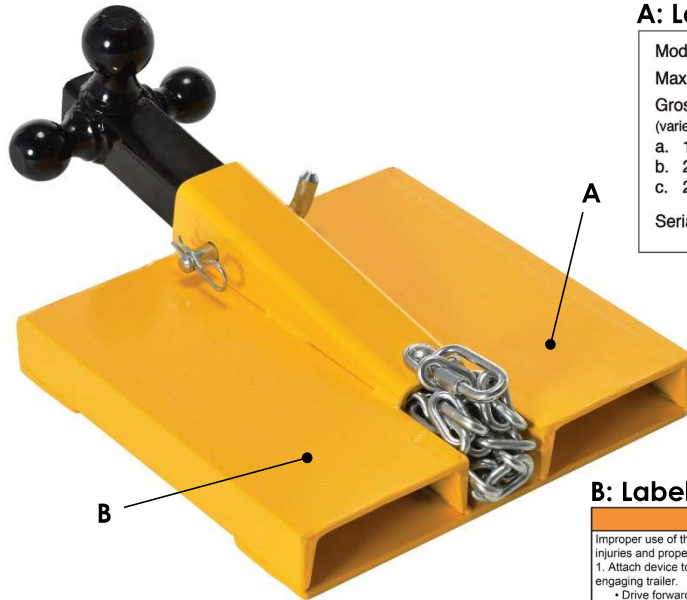
1. Safety chain and snap hook (attached to the free end of the safety chain): Confirm that the spring latch (of the hook) automatically closes firmly. Do not continue to use the device if the snap hook, chain, or quick link is damaged or worn significantly enough to prevent [SATISFACTORY FUNCTION](#).
2. Labels: All labels should be undamaged, easily readable (not faded), and located as shown in the [LABELING DIAGRAM](#) on p. 6. Replace any label that is damaged, unreadable or difficult to read, or missing. Contact Vestil to order replacement.

Inspect the following components **at least once each month**. Replace each component that is not in satisfactory condition:

1. Fasteners (hardware):
 - Retaining pin and hitch pin clip;
 - Chain and snap hook.
2. Fork pockets: Confirm that each pocket is structurally sound and free of significant rust.
3. Welds: Confirm that all welds are intact, i.e. not broken, no significant rusting or corrosion.
4. Tow ball hitch and hitch receiver: Confirm that there are no deformations, warps, cracks, etc.
5. Overall condition: The structure should be clean, square and rigid, and free of rust and corrosion. Remove dirt and debris. Do not use this device if the frame is severely rusted or corroded. To treat minor rusting, remove rust with steel wool; then clean the area with a damp rag. Apply touchup paint to the cleaned area once it dries.

LABELING DIAGRAM

Label content and location are subject to change so your product might not be labeled exactly as shown. Compare the diagram below with the [RECORD](#). If you have any questions about labeling, contact [TECHNICAL SERVICE](#). Replace all labels that are damaged, missing, or not easily readable (e.g. faded). To order replacement labels, contact the technical service and parts department online at http://www.vestilmfg.com/parts_info.htm. Alternatively, request replacement parts and/or service by calling (260) 665-7586 and asking the operator to connect you to [TECHNICAL SERVICE](#).



A: Label 1021: Applied to top of either fork pocket

| | | |
|--|------------|------------|
| Model..... | FTTM-2 | |
| Maximum tongue weight..... | 1,500 lbs. | |
| Gross Trailer Weight (varies with ball hitch used): | | |
| a. 1-7/8" | = | 2,000 lbs. |
| b. 2" | = | 3,500 lbs. |
| c. 2-5/16" | = | 7,500 lbs. |
| Serial number | _____ | |

| | | |
|---|---------|----------|
| Modelo..... | FTTM-2 | |
| Peso máximo de la lengüeta | 680 kg. | |
| Peso bruto del remolque (varia con el enganche de bola que sea usado): | | |
| a. 47.625 mm | = | 909 kg. |
| b. 50.800 mm | = | 1590 kg. |
| c. 58.730 mm | = | 3409 kg. |
| Serial number | _____ | |

1021

B: Label 1019: Applied to either fork pocket

⚠ WARNING

Improper use of this device can result in serious personal injuries and property damage.

1. Attach device to fork carriage with safety chain before engaging trailer.

- Drive forward until forks contact ends of fork pockets.
- Safety chain must be taut when connected to fork carriage. Connect chain to fork carriage via shortest path. Chain must not be able to disconnect from carriage.

2. Use this attachment to PUSH trailers. DO NOT pull trailers.

⚠ ADVERTENCIAS

El uso incorrecto de este dispositivo puede resultar en lesiones personales graves y daños a la propiedad.

1. Fije el dispositivo al carro de la horquilla con la cadena de seguridad antes de acoplar el remolque.

- Avance hasta que las horquillas entren en contacto con los extremos de los bolsillos de la horquilla.
- La cadena de seguridad debe estar tensa cuando se conecta al carro de la horquilla. Conecte la cadena al carro de la horquilla por el camino más corto. La cadena no debe poder desconectarse del carro.

2. Utilice este accesorio para remolques PUSH. NO tire de los remolques.



LIMITED WARRANTY

Vestil Manufacturing Corporation ("Vestil") warrants this product to be free of defects in material and workmanship during the warranty period. Our warranty obligation is to provide a replacement for a defective, original part covered by the warranty after we receive a proper request from the Warrantee (you) for warranty service.

Who may request service?

Only a warrantee may request service. You are a warrantee if you purchased the product from Vestil or from an authorized distributor AND Vestil has been fully paid.

Definition of "original part"?

An original part is a part used to make the product as shipped to the Warrantee.

What is a "proper request"?

A request for warranty service is proper if Vestil receives: 1) a photocopy of the Customer Invoice that displays the shipping date; AND 2) a written request for warranty service including your name and phone number. Send requests by one of the following methods:

| <u>US Mail</u> | <u>Fax</u> | <u>Email</u> |
|---|--|---|
| Vestil Manufacturing Corporation 2999 North Wayne Street, PO Box 507 Angola, IN 46703 | (260) 665-1339 <u>Phone</u> (260) 665-7586 | info@vestil.com Enter "Warranty service request" in the subject field. |

In the written request, list the parts believed to be defective and include the address where replacements should be delivered. After Vestil receives your request for warranty service, an authorized representative will contact you to determine whether your claim is covered by the warranty. Before providing warranty service, Vestil will require you to send the entire product, or just the defective part (or parts), to its facility in Angola, IN.

What is covered under the warranty?

The warranty covers defects in the following original, dynamic parts: motors, hydraulic pumps, motor controllers, and cylinders. It also covers defects in original parts that wear under normal usage conditions ("wearing parts"), such as bearings, hoses, wheels, seals, brushes, and batteries.

How long is the warranty period?

The warranty period for original dynamic components is 90 days. For wearing parts, the warranty period is 90 days. Both warranty periods begin on the date Vestil ships the product to the Warrantee. If the product was purchased from an authorized distributor, the periods begin when the distributor ships the product. Vestil may, at its sole discretion, extend a warranty period for products shipped from authorized distributors by up to 30 days to account for shipping time.

If a defective part is covered by the warranty, what will Vestil do to correct the problem?

Vestil will provide an appropriate replacement for any covered part. An authorized representative of Vestil will contact you to discuss your claim.

What is not covered by the warranty?

The Warrantee (you) is responsible for paying labor costs and freight costs to return the product to Vestil for warranty service.

Events that automatically void this Limited Warranty.

- Misuse;
- Negligent assembly, installation, operation or repair;
- Installation/use in corrosive environments;
- Inadequate or improper maintenance;
- Damage sustained during shipping;
- Collisions or other accidents that damage the product;
- Unauthorized modifications: Do not modify the product IN ANY WAY without first receiving written authorization from Vestil.

Do any other warranties apply to the product?

Vestil Manufacturing Corp. makes no other express warranties. All implied warranties are disclaimed to the extent allowed by law. Any implied warranty not disclaimed is limited in scope to the terms of this Limited Warranty. Vestil makes no warranty or representation that this product complies with any state or local design, performance, or safety code or standard. Noncompliance with any such code or standard is not a defect in material or workmanship.