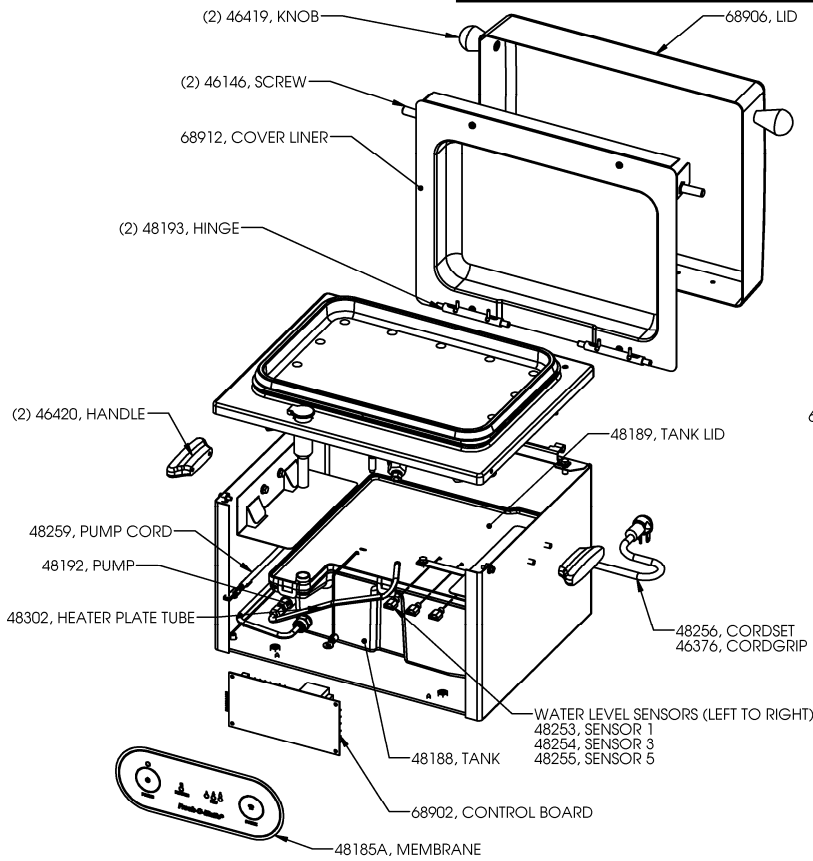
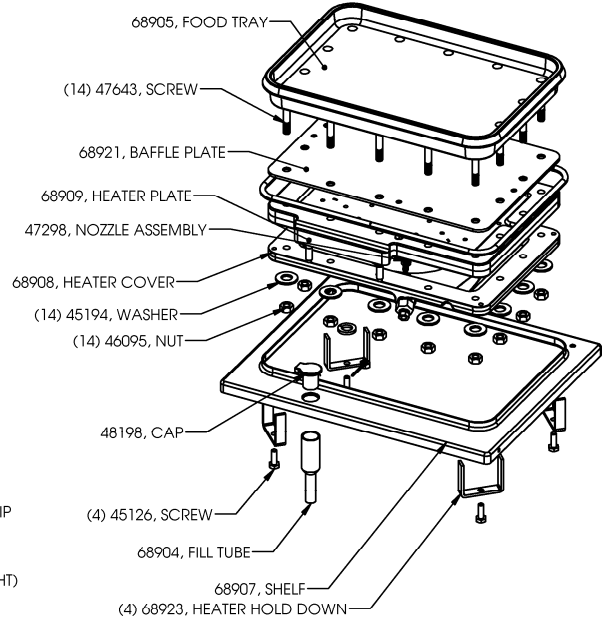


6625A, FRESH-O-MATIC EXPLODED VIEW



68920 HEATER PLATE ASSEMBLY DETAIL



Model	Volts	Amps	Watts	Hz	Phase
6625A	120	12.5	1500	60	1

TROUBLESHOOTING

PROBLEM	REASON	SOLUTION
No Steam	<ul style="list-style-type: none"> Air in line Power not on Water level low Unit has cooled by holding the steam button or unit has been used too often. Water level too low. Holes have become "plugged" 	<ul style="list-style-type: none"> Heat unit, press steam button and hold 5-10 seconds (two or three times). Turn on power. Fill unit with distilled water. Allow for reheat - Green Heat Light off. Fill unit with distilled water. Clean and use perforated tray only.
Green Heat Light constantly blinks	<ul style="list-style-type: none"> Unit overused. Heated plate has cooled by holding the steam button or unit has been used too often. 	<ul style="list-style-type: none"> Allow unit more time to recover. <p>NOTE: Light will blink during start-up (20 minutes)</p>
Water Under Unit	<ul style="list-style-type: none"> Overfilling or tipping the unit. Condensation from under the cover. 	<ul style="list-style-type: none"> Do not overfill or tip unit. Check hose connections and secure, if necessary.
Water On Plate	<ul style="list-style-type: none"> Pressing steam button too often or holding down the steam button. 	<ul style="list-style-type: none"> Allow 30-second between each demand for steam.



NEMCO FOOD EQUIPMENT 301 Meuse Argonne, Hicksville, OH 43526
 Phone: (419) 542-7751 Fax: (419) 542-6690 Toll free: 1-800-782-6761
www.nemcofoodequip.com