

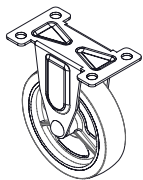
#257SFPT600

Foldable Platform Truck

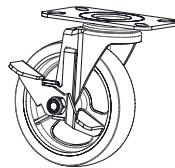
ASSEMBLY TIPS

- Read instructions thoroughly before proceeding.
- Tighten all parts by hand. Do not use power tools.
- For your safety, please do not overload.

PARTS LIST



A Fixed Caster (x2)



B Swivel Caster (x2)

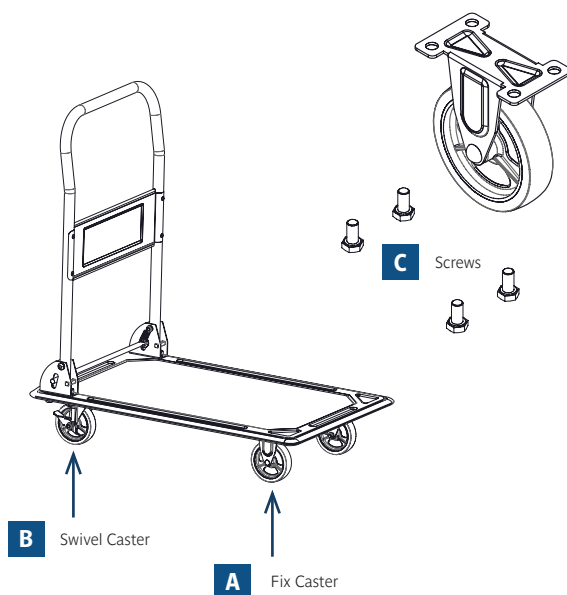


C Screw M10 x 16mm (x16)

STEP 1

Ensure all parts are included before assembly. Casters should be installed using the screws.

NOTE: The swivel casters should be installed on the handle side.



STEP 2

To fold handle flat, press down the bottom bar.

