



IMPACT TRAFFIC DOORS INSTALLATION INSTRUCTIONS

IMPORTANT NOTE:

Check shipping containers before releasing carrier. Notify carrier immediately upon discovering any concealed damage.

WARNING

Do not install this product unless you read and understand the warnings and installation instructions contained in this manual. Failure to do so could result in serious injury or death.

HARDWARE:

1½" or ¾" V-CAM with Combo Bottom Bearing / Jamb Guard

V-CAM HARDWARE OPTIONS APPLY TO:

FD-175 and XHD-175 Models

ESR Consumer Products/Door Division | 1831 Amos Drive | Muscle Shoals, AL 35661



1.800.633.3120



aleco.com



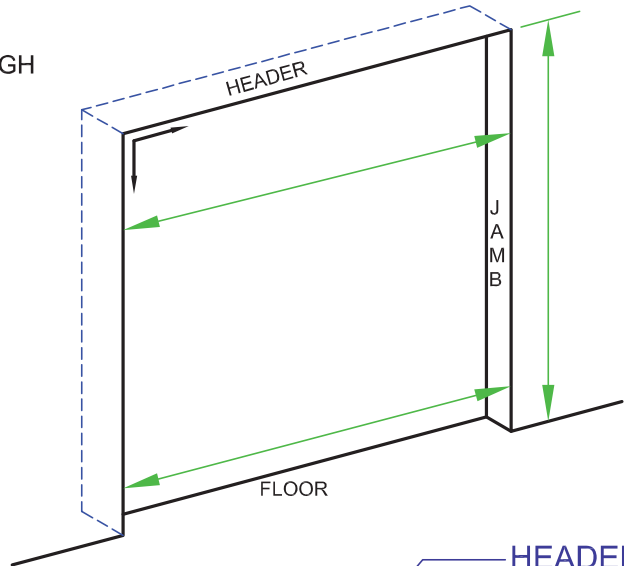
info@aleco.com

INSTALLATION INSTRUCTIONS

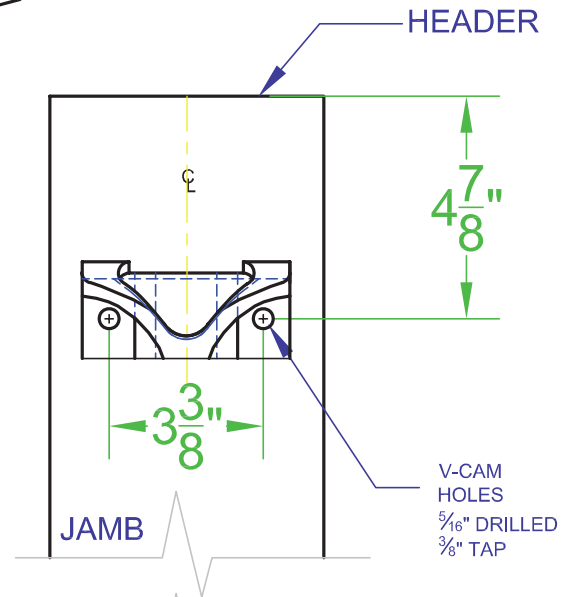
NOTE: Check shipping containers before releasing carrier. Notify carrier immediately upon discovering any concealed damage.

DOOR OPENING SIZE: _____" WIDE x _____" HIGH

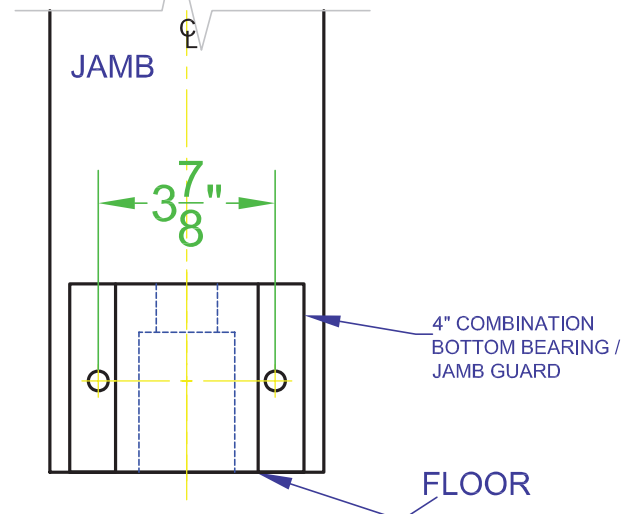
1. Make sure jambs are plumb and square.
Jamb recommendation: minimum 6" wide
X $\frac{5}{16}$ " thick (steel)



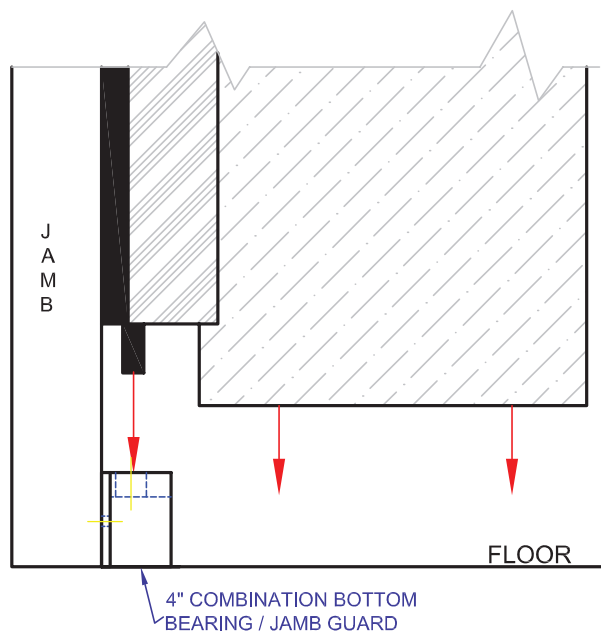
2. Drill and tap Top V-Cam holes ($\frac{5}{16}$ " drill - $\frac{3}{8}$ " tap)



3. Drill and tap bottom bearing holes ($\frac{5}{16}$ " drill - $\frac{3}{8}$ " tap). Use bearing as template for hole locations. (Bottom bearing sits on floor.)

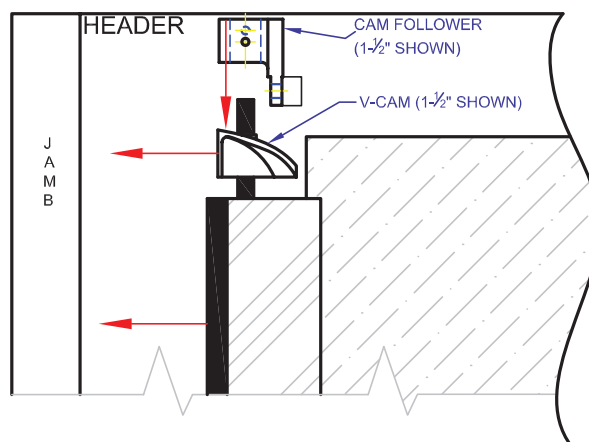


4. Install the door leafs, bottom first.

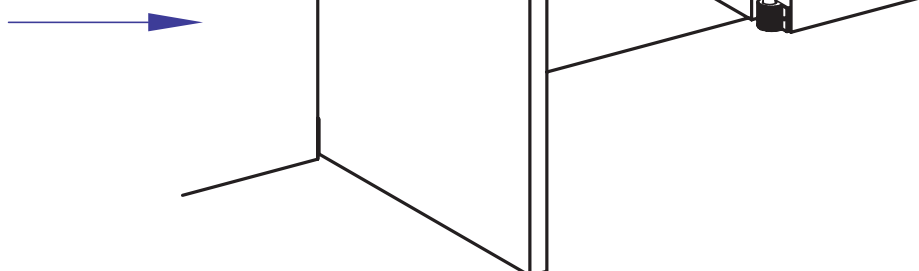


5. Shim if necessary - tighten bolts.

CAUTION: When using Weld Plates, do not torque nuts more than 30 ft. lbs.



6. Make sure leafs swing freely in both directions. If doors do not swing freely, loosen bolts and re-align.





IMPACT TRAFFIC DOORS INSTALLATION INSTRUCTIONS

IMPORTANT NOTE:

Check shipping containers before releasing carrier. Notify carrier immediately upon discovering any concealed damage.

WARNING

Do not install this product unless you read and understand the warnings and installation instructions contained in this manual. Failure to do so could result in serious injury or death.

HARDWARE:

1½" or ¾" V-CAM with Raised Combo Bottom Bearing / Jamb Guard

V-CAM HARDWARE OPTIONS APPLY TO:

FD-175 and XHD-175 Models

ESR Consumer Products/Door Division | 1831 Amos Drive | Muscle Shoals, AL 35661



1.800.633.3120



aleco.com



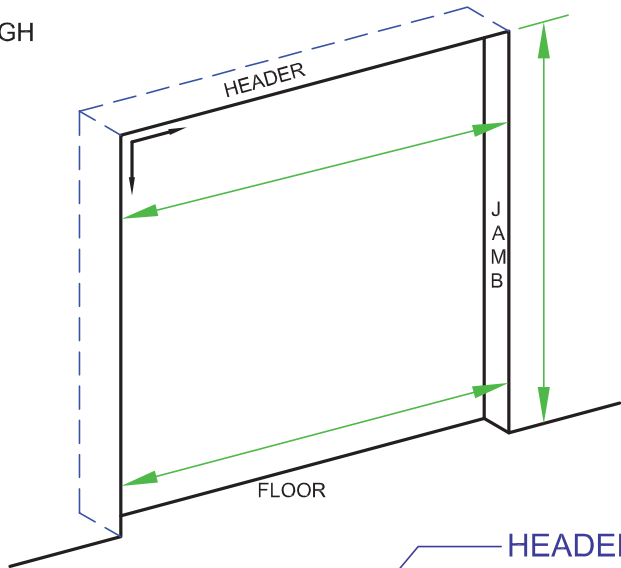
info@aleco.com

INSTALLATION INSTRUCTIONS

NOTE: Check shipping containers before releasing carrier. Notify carrier immediately upon discovering any concealed damage.

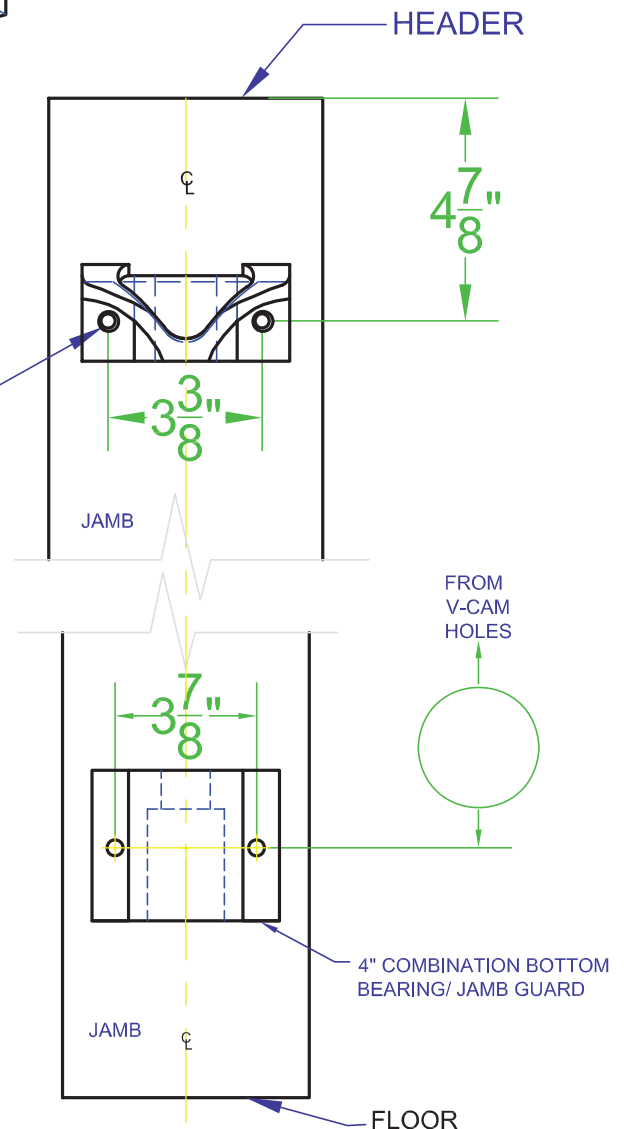
DOOR OPENING SIZE: _____" WIDE x _____" HIGH

1. Make sure jambs are plumb and square.
Jamb recommendation: minimum 6" wide
X $\frac{5}{16}$ " thick (steel)



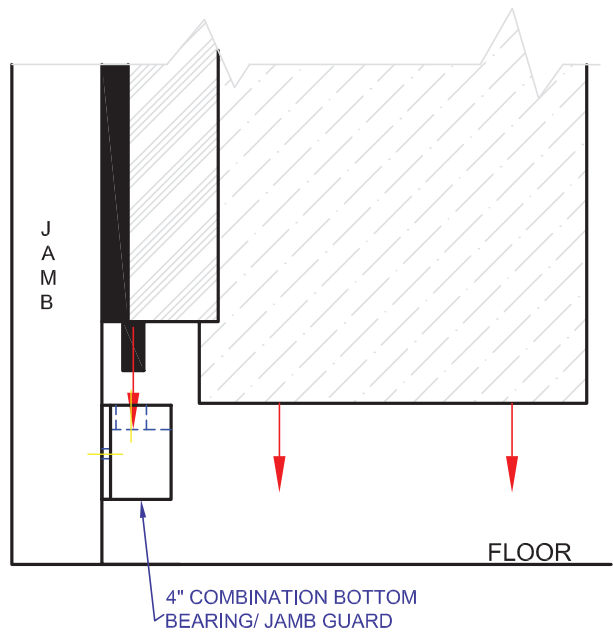
2. Drill and tap Top V-Cam holes ($\frac{5}{16}$ " drill - $\frac{3}{8}$ " tap)

V-CAM
HOLES
 $\frac{5}{16}$ " DRILLED
 $\frac{3}{8}$ " TAP



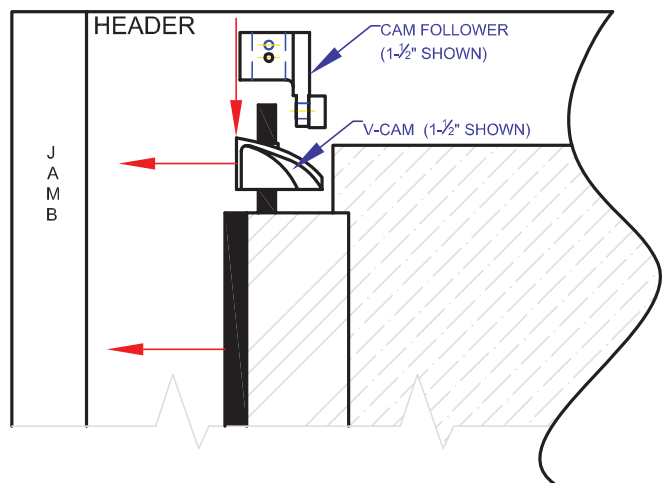
3. Drill and tap bottom bearing holes ($\frac{5}{16}$ " drill, $\frac{3}{8}$ " tap). Locate bottom bearing from V-Cam holes, centerline to centerline as noted.

4. Install the door leafs, bottom first.

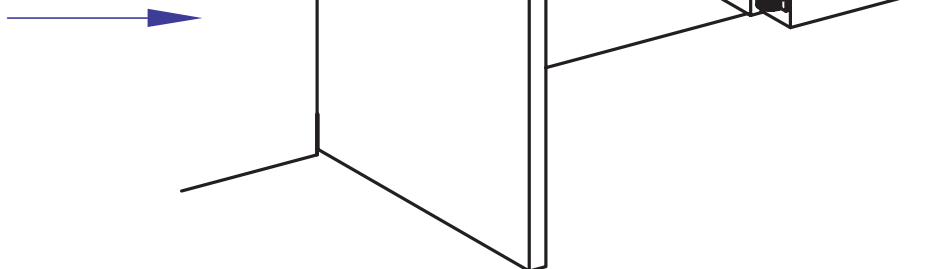


5. Shim if necessary - tighten bolts.

CAUTION: When using Weld Plates, do not torque nuts more than 30 ft. lbs.



6. Make sure leafs swing freely in both directions. If doors do not swing freely, loosen bolts and re-align.





IMPACT TRAFFIC DOORS INSTALLATION INSTRUCTIONS

IMPORTANT NOTE:

Check shipping containers before releasing carrier. Notify carrier immediately upon discovering any concealed damage.

WARNING

Do not install this product unless you read and understand the warnings and installation instructions contained in this manual. Failure to do so could result in serious injury or death.

HARDWARE:

1½" or ¾" V-CAM with Standard Bottom Bearing

V-CAM HARDWARE OPTIONS APPLY TO:

FD-175 and XHD-175 Models

ESR Consumer Products/Door Division | 1831 Amos Drive | Muscle Shoals, AL 35661



1.800.633.3120



aleco.com



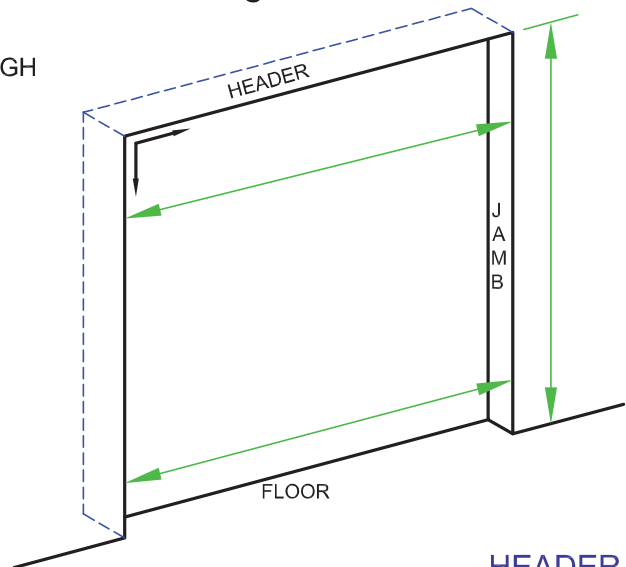
info@aleco.com

INSTALLATION INSTRUCTIONS

NOTE: Check shipping containers before releasing carrier. Notify carrier immediately upon discovering any concealed damage.

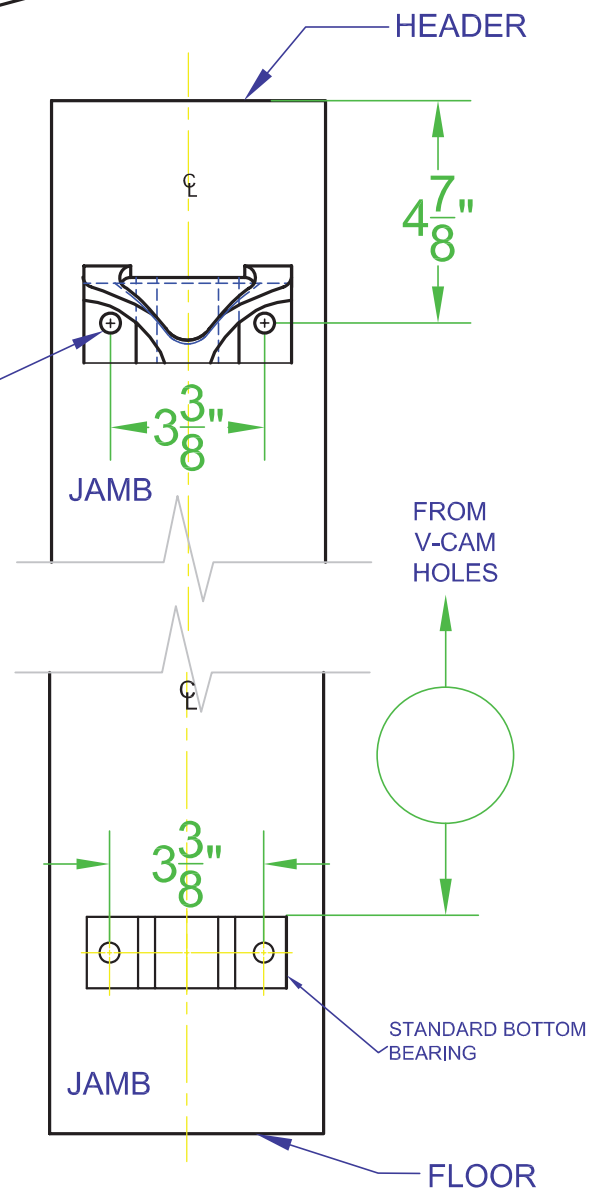
DOOR OPENING SIZE: _____" WIDE x _____" HIGH

1. Make sure jambs are plumb and square.
Jamb recommendation: minimum 6" wide
X $\frac{5}{16}$ " thick (steel)



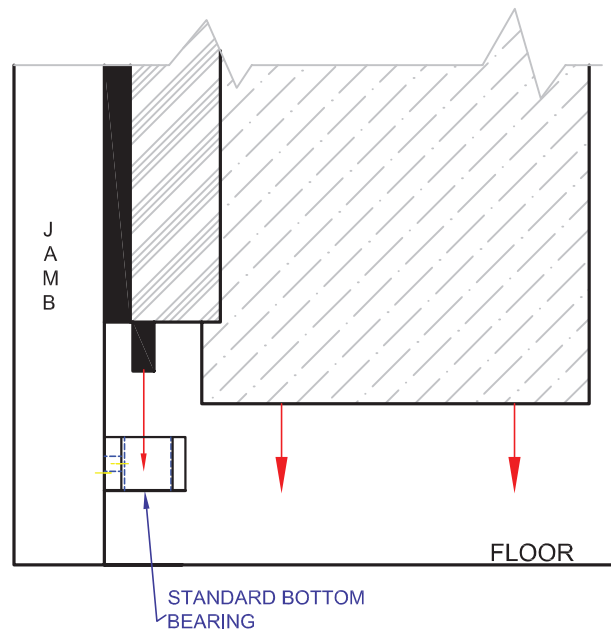
2. Drill and tap Top V-Cam holes ($\frac{5}{16}$ " drill - $\frac{3}{8}$ " tap)

V-CAM
HOLES
($\frac{5}{16}$ " DRILLED - $\frac{3}{8}$ " TAP)

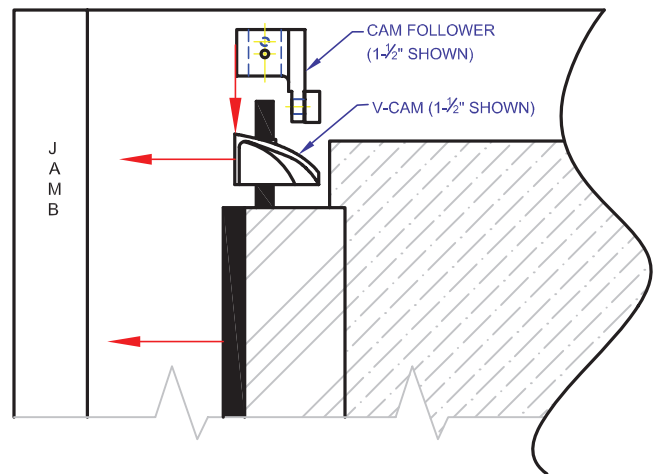


3. Drill and tap bottom bearing holes ($\frac{5}{16}$ " drill - $\frac{3}{8}$ " tap). Locate bottom bearing from V-Cam holes (top) centerline to centerline as noted.

4. Install the door leafs, bottom first.

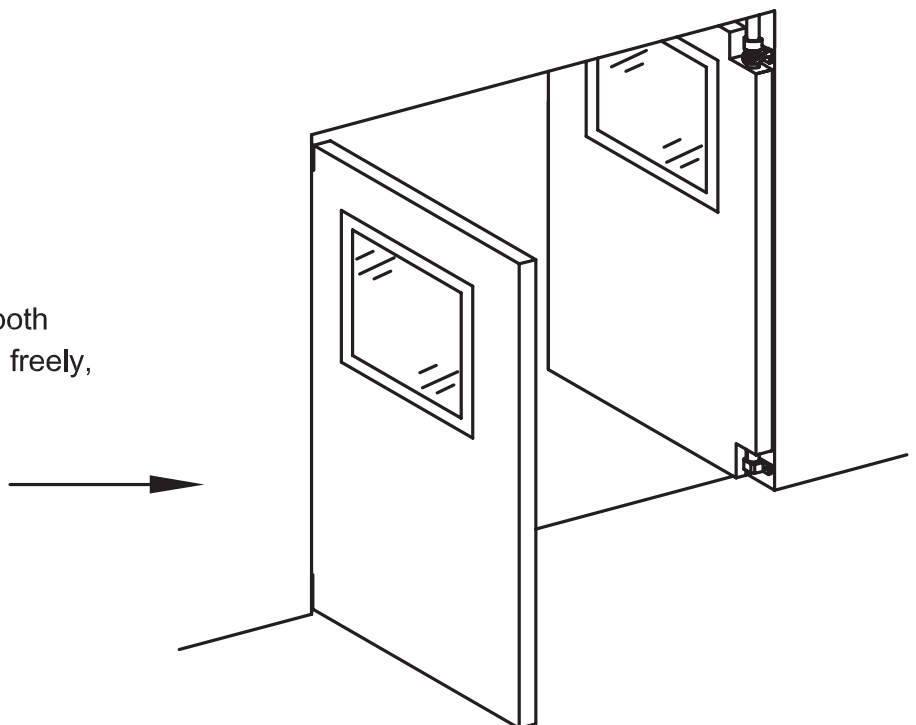


5. Shim if necessary - tighten bolts.



CAUTION: When using Weld Plates, do not torque nuts more than 30 ft. lbs.

6. Make sure leafs swing freely in both directions. If doors do not swing freely, loosen bolts and re-align.





IMPACT TRAFFIC DOORS INSTALLATION INSTRUCTIONS

IMPORTANT NOTE:

Check shipping containers before releasing carrier. Notify carrier immediately upon discovering any concealed damage.

WARNING

Do not install this product unless you read and understand the warnings and installation instructions contained in this manual. Failure to do so could result in serious injury or death.

HARDWARE:

1½" or ¾" V-CAM with 11⅞" Jamb Guard Cover and Spring Compensator

V-CAM HARDWARE OPTIONS APPLY TO:

FD-175 and XHD-175 Models

ESR Consumer Products/Door Division | 1831 Amos Drive | Muscle Shoals, AL 35661



1.800.633.3120



aleco.com



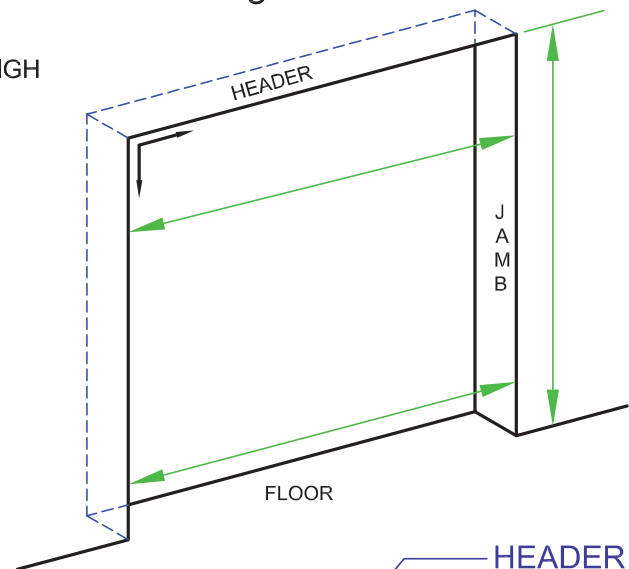
info@aleco.com

INSTALLATION INSTRUCTIONS

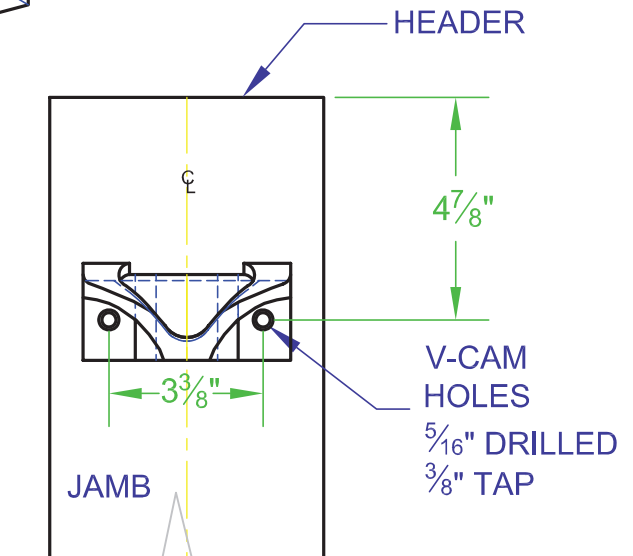
NOTE: Check shipping containers before releasing carrier. Notify carrier immediately upon discovering any concealed damage.

DOOR OPENING SIZE: _____" WIDE x _____" HIGH

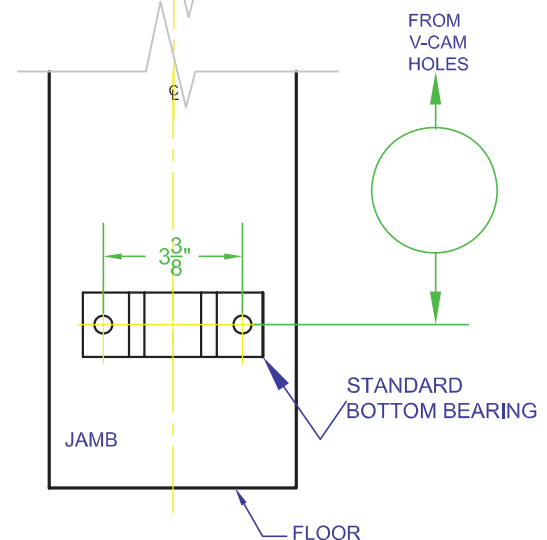
1. Make sure jambs are plumb and square.
Jamb recommendation: minimum 6" wide
X $\frac{5}{16}$ " thick (steel)



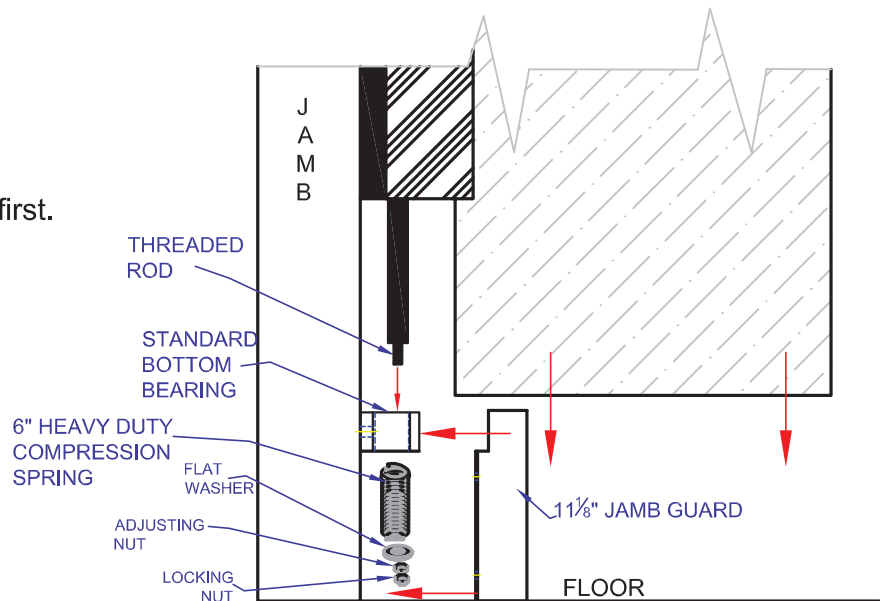
2. Drill and tap Top V-Cam holes ($\frac{5}{16}$ " drill - $\frac{3}{8}$ " tap)



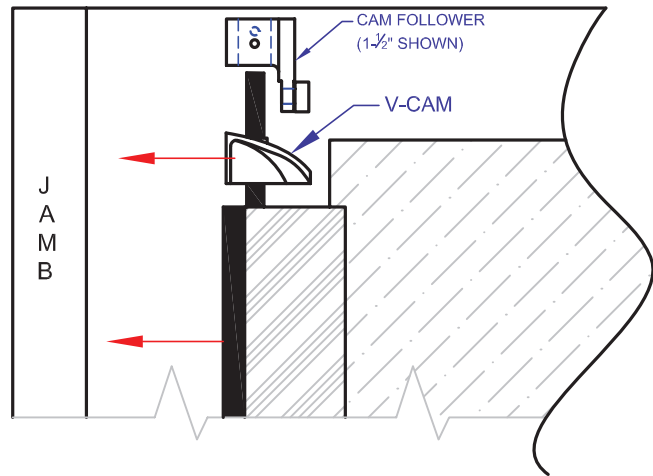
3. Drill and tap bottom bearing holes ($\frac{5}{16}$ " drill - $\frac{3}{8}$ " tap). Locate bottom bearing from V-Cam holes, centerline to centerline as noted.



4. Install the door leafs, bottom first.

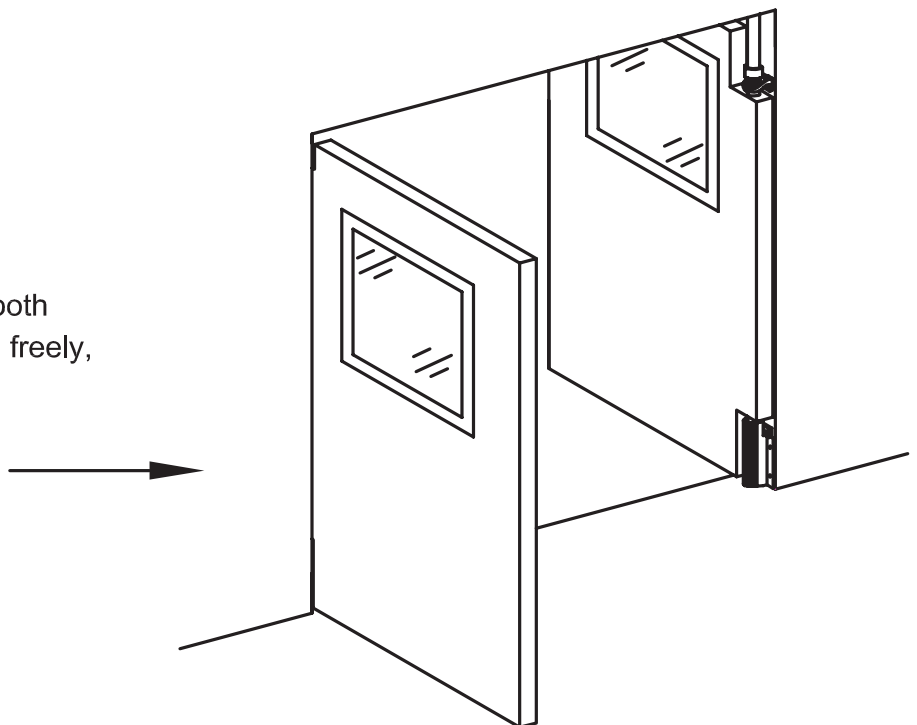


5. Shim if necessary - tighten V-Cam and bottom bearing bolts before adjusting spring.



CAUTION: When using Weld Plates, do not torque nuts more than 30 ft. lbs.

6. Make sure leafs swing freely in both directions. If doors do not swing freely, loosen bolts and re-align.





IMPACT TRAFFIC DOORS INSTALLATION INSTRUCTIONS

IMPORTANT NOTE:

Check shipping containers before releasing carrier. Notify carrier immediately upon discovering any concealed damage.

WARNING

Do not install this product unless you read and understand the warnings and installation instructions contained in this manual. Failure to do so could result in serious injury or death.

HARDWARE:

1½" Rise - 90° x 180° V-CAM and Bottom Bearing with
Adjustable Spring Compensator

V-CAM HARDWARE OPTIONS APPLY TO:

FD-175 and XHD-175 Models

ESR Consumer Products/Door Division | 1831 Amos Drive | Muscle Shoals, AL 35661



1.800.633.3120



aleco.com



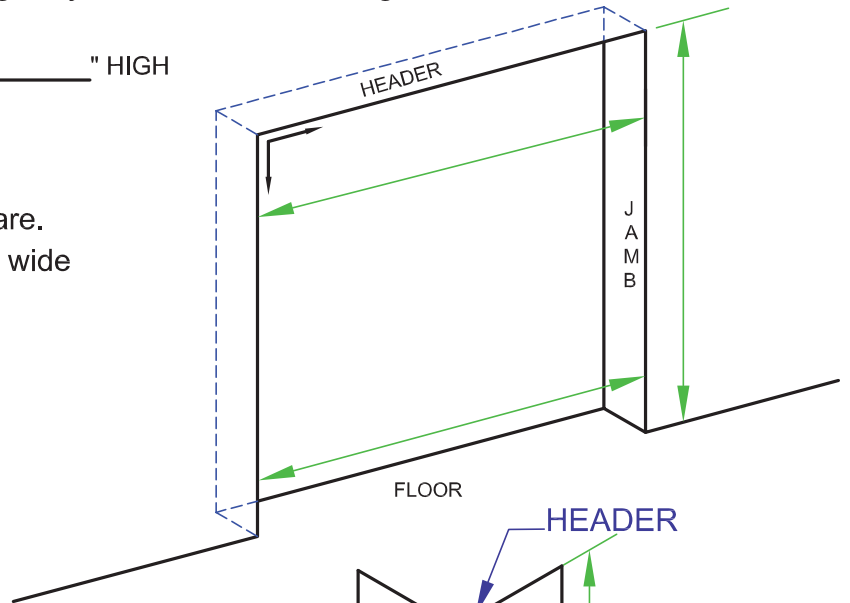
info@aleco.com

INSTALLATION INSTRUCTIONS

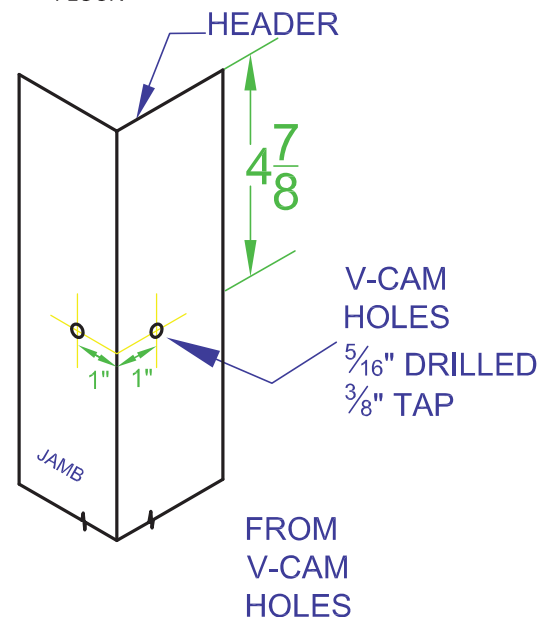
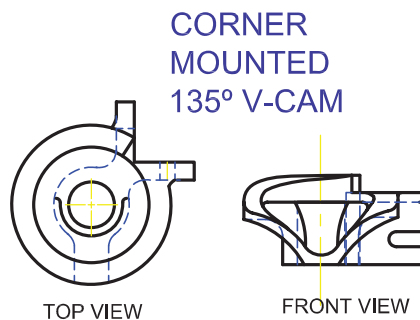
NOTE: Check shipping containers before releasing carrier. Notify carrier immediately upon discovering any concealed damage.

DOOR OPENING SIZE: _____" WIDE x _____" HIGH

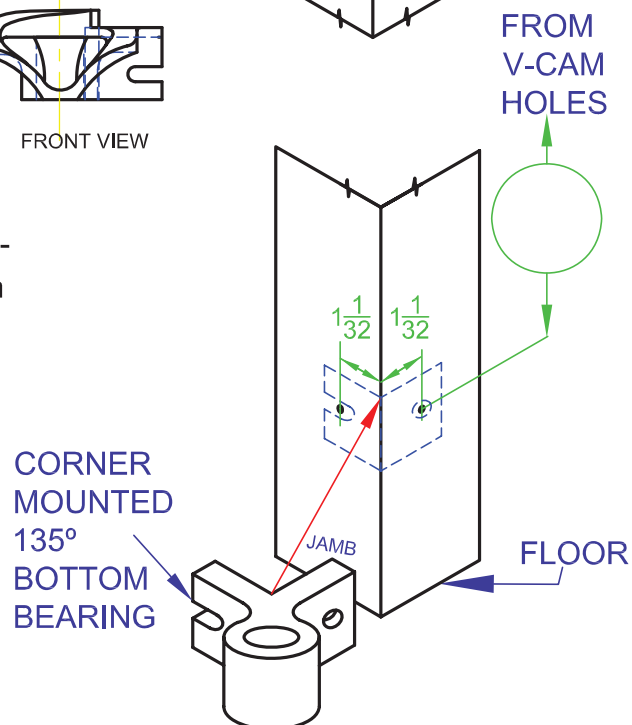
1. Make sure jambs are plumb and square.
Jamb recommendation: minimum 6" wide
X $\frac{5}{16}$ " thick (steel)



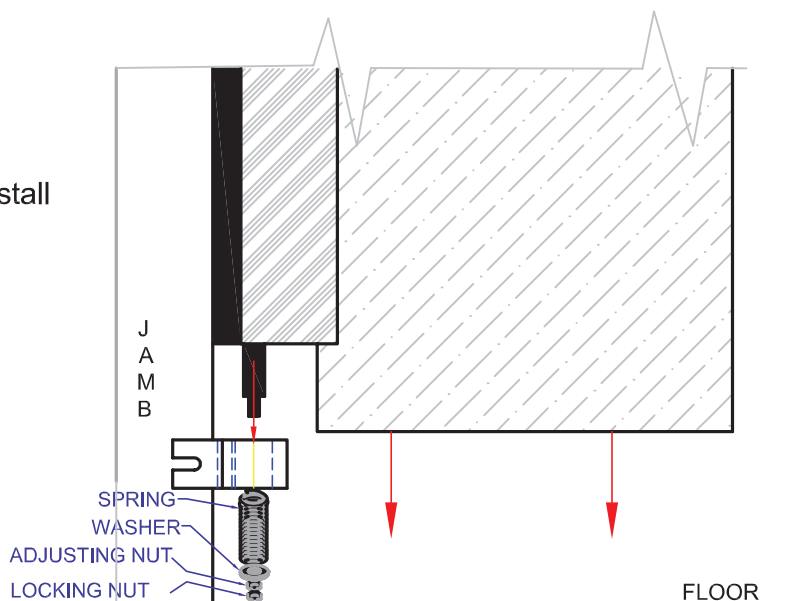
2. Drill and tap Top V-Cam holes ($\frac{5}{16}$ " drill - $\frac{3}{8}$ " tap)



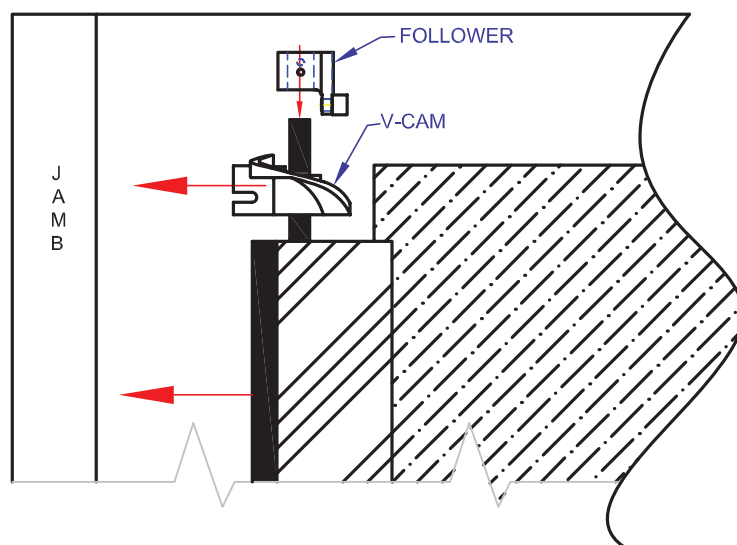
3. Drill and tap bottom bearing holes ($\frac{5}{16}$ " drill - $\frac{3}{8}$ " tap). Locate bottom bearing from V-Cam holes, centerline to centerline as noted.



4. Remove adjusting nut and spring to install bottom bearing. Install the door leafs, bottom first.



5. Shim if necessary - tighten bolts on V-Cam and bottom bearing. - tighten adjusting nut on spring compensator to achieve desired tension.



CAUTION: When using Weld Plates, do not torque nuts more than 30 ft.lbs.

6. Make sure leafs swing freely in both directions. If doors do not swing freely, loosen bolts and re-align.

