



INSTALLATION INSTRUCTIONS

MODEL: 73751

PRE -INSTALLATION:

- Verify all parts are included in the box. Note: Batteries are already installed in the (12) CONTROL BOX
- Tools required for assembly safety glasses, adjustable wrench, screw driver, adjustable pliers, needle nose pliers and (10) SOCKET.
- Prior to installing this faucet, thoroughly flush all water lines and replace stop washers, if necessary.
- To ensure proper operation, " DRY TEST " the faucet by plugging (5) LED SENSOR CABLE into the matching connector on the (12) CONTROL BOX. By aligning the two white arrows to plug in. Place your hand in front of faucets (4) LED SENSOR. If there is a clicking sound, the faucet is activating properly. If not, call the factory.
- After successful "DRY TEST," unplug (5) LED SENSOR CABLE from the (12) CONTROL BOX.
- **Use Teflon Tape, not Pipe Dope for all connections.

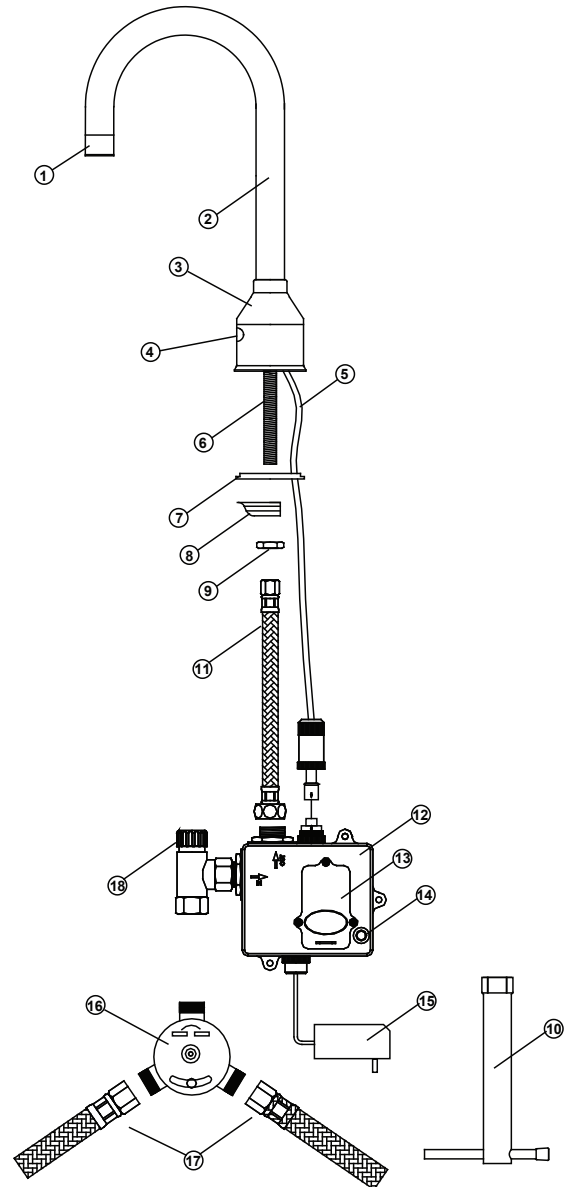
INSTALLATION:

1. Make sure the (7) RUBBER GASKET is placed into the bottom of the (3) SINGLE DECK BODY. Insert the (3) SINGLE DECK BODY and (5) LED SENSOR CABLE through the rough in hole.
2. On the bottom side of the rough in hole, slide the (8) MOUNTING WASHER on to the (6) SUPPLY NIPPLE, then place the (9) MOUNTING NUT on and tighten using the (10) SOCKET.
3. Place Teflon tape on the end of (6) SUPPLY NIPPLE, then connect to the (11) SUPPLY LINE and tighten.
4. Connect (16) MIXING VALVE to the (12) CONTROL BOX water inlet.
5. Mount the (12) CONTROL BOX to the wall and connect the (11) SUPPLY LINE to the (12) CONTROL BOX water outlet.
6. Plug in (5) LED SENSOR CABLE into the matching connector on the (12) CONTROL BOX. By aligning the two white arrows together. Slide (5) LED SENSOR CABLE cover and tighten to (12) Control Box.
7. Connect the (17) HOT AND COLD SUPPLY LINES to the (16) MIXING VALVE.
8. Connect the (17) HOT AND COLD SUPPLY LINES to water supply.
9. Turn on water supply and check for leaks.
10. On the bottom of the (12) CONTROL BOX remove the black rubber plug to insert the (15) POWER ADAPTER.
11. Place Hand in front of (4) LED SENSOR to activate water flow. Remove hands and water should stop. If not, refer to troubleshooting guide.
12. To adjust the temperature loosen the screw on the (16) MIXING VALVE and move the tab left to right, after temperature is set tighten the screw.

SENSOR RANGE SETUP (Default range is preset at 5-1/ 2)

NOTE - Do not attempt to open control module to adjust sensing range

1. Press and hold On/Off button for 5-7 seconds. Red LED on.
2. Release button. Red LED off
3. Place hand 2-3" from spout. Wait 5-10 seconds until red LED Flashes.
4. Place hand at desired sensor distance. Hold hand in place and press the On/Off button.



PARTS:

- | | |
|---------------------|-----------------------------|
| 1. AERATOR | 10. SOCKET |
| 2. GOOSENECK SPOUT | 11. SUPPLY LINE |
| 3. SINGLE DECK BODY | 12. CONTROL BOX |
| 4. LED SENSOR | 13. BATTERY COVER |
| 5. LED SENSOR CABLE | 14. ON/OFF CONTROL BUTTON |
| 6. SUPPLY NIPPLE | 15. POWER ADAPTER |
| 7. RUBBER GASKET | 16. MIXING VALVE |
| 8. MOUNTING WASHER | 17. HOT & COLD SUPPLY LINES |
| 9. MOUNTING NUT | 18. IN-LINE FILTER |