



# Model EV-30, 60-T, 60-P

Commercial Vacuum

## Operating and Maintenance Manual



Read before operating.

CONTENTS:

INTRODUCTION ..... 2

IMPORTANT SAFETY INSTRUCTION..... 3

GROUNDING INSTRUCTIONS..... 4

SETUP..... 4

OPERATION..... 4

Emptying the Debris Collection Tank:..... 5

Filter Changing: ..... 5

EV-60-P Pump:..... 5

TROUBLESHOOTING..... 5

TECHNICAL DATA ..... 6

PARTS BREAKDOWN ..... 7

EV-30 ..... 7

EV-60-P..... 11

EV-60-T ..... 16

Thank you for purchasing this Goodway Vacuum. We appreciate your business and look forward to serving you in the future. As with all Goodway products, you can be assured that the finest quality components and workmanship have gone into this machine.

Please take a few minutes to read the following Operating and Maintenance Instructions. By carefully following the instructions, you will obtain years of trouble free service from this product. Please pay particular attention to the safety instructions and exercise caution when using this machine.

**GOODWAY® TECHNOLOGIES CORPORATION**  
HVAC & FACILITY MAINTENANCE SOLUTIONS

For Sales Call: 1-800-333-7467  
For Service Call: 1-800-370-2855



## WARNING



### IMPORTANT SAFETY INSTRUCTIONS

READ ALL INSTRUCTIONS BEFORE USING THIS VACUUM CLEANER

**WARNING:** To reduce the risk of fire, electric shock or injury:

- Do not leave appliance when plugged in. Disconnect unit from power when not in use or before servicing.

**WARNING:** To reduce the risk of electric shock - Do not use outdoors or on wet surfaces.

1. Use only as described in this manual. Use only manufacturer's recommend accessories and spare parts.
2. Do not allow to be used as a toy. Close attention is necessary when used by or near children.
3. Do not use with a damaged cord or plug. If unit is not working as it should, has been dropped, damaged, left outdoors, or dropped into water, contact Goodway Technologies Corporation's Customer Service at (800) 370-2855.
4. Do not pull or carry by cord, use cord as a handle, close a door on cord, or pull cord around sharp edges or corners. Do not run appliance over cord. Keep cord away from heated surfaces.
5. Do not unplug by pulling on cord. To unplug, grasp the plug, not the cord.
6. Do not handle plug or appliance with wet hands.
7. Do not put any objects into openings. Do not use with any opening blocked; keep free of dust, lint, hair and anything that may reduce airflow.
8. Keep hair, loose clothing, fingers, and all parts of body away from openings and moving parts.
9. Turn off all controls before unplugging.
10. Use extra careful when cleaning stairs.
11. Do not use to pick up flammable or combustible liquids, such as gasoline, or use in areas where they may be present.
12. Connect to a properly grounded outlet only. See grounding instructions.
13. Do not pick up anything that is burning or smoking, such as cigarettes, matches, or hot ashes.
14. Do not use without dust bag and/or filters in place.

SAVE THESE INSTRUCTIONS

## GROUNDING INSTRUCTIONS

This appliance must be grounded. If it should malfunction or breakdown, grounding provides a path of least resistance for electric current to reduce the risk of electric shock. This appliance must be connected to a grounded metal, permanent wiring system; or an equipment grounding conductor must be run with the circuit conductors and connected to the equipment grounding terminal located in the switch box.

**WARNING:** Improper connection of the equipment-grounding conductor can result in risk of electric shock. Check with a qualified electrician or service person if you are in doubt as to whether the outlet is properly grounded. Do not modify the plug provided with the appliance – if it will not fit the outlet, have a proper outlet installed by a qualified electrician.

## SETUP

1. Remove from packaging and inspect unit. Report any discrepancies to Goodway Technologies Corporation's Customer Service at (800) 370-2855.
  2. Position this vacuum cleaner in the area it will be used.
  3. For Dry Pick-up:
    - 3a. Insert the filter in the tank
    - 3b. If a paper bag is provided, insert it in the tank on the deflector
    - 3c. The EV-60-P is intended for wet pick-up only.
- For Wet Pick-up:**
- 3d. Remove the filter in the tank
  - 3e. Ensure the float is in place and is not damaged or obstructed by anything that may stop it from rising
4. Assemble the head on the tank and lock it in place with the hooks
  5. Connect the power cord to a properly rated, switched power source (see name plate for power requirements). Ensure the unit is properly grounded.
  6. Connect the flexible hose to the inlet
  7. Connect the extensions to the other side of the flexible hose
  8. Select and connect the suitable accessory

## OPERATION

1. Grip the end of the flexible hose.
2. The motor is controlled by a switch on the motor head. To start suction switch the equipment on. The EV-60-T and EV-60-P have two switches that control each of its two motors.
3. To stop the suction, switch off the equipment.
4. After use or before storing for any length of time completely empty the drum of recovered liquids.

### Emptying the Debris Collection Tank:

To empty the collection tank remove the vacuum head by unhooking the hooks, and then empty the tank.

The EV-60-T and EV-60-P have a tilt bar for easy dumping. Grasp the lower handle under the suction intake and pull up, tilting the tank backwards over the two large rear wheels.

### Filter Changing:

To change the filter, remove the vacuum head by unhooking the hooks. Lift out and replace or clean the filter. To clean the filter, gently shake out.

**WARNING:** As the filter will be dirty, protective eyewear and a dust mask must be worn

**EV-60-P Pump:**

As the tank fills with liquid the float on the pump will rise. Once the float reaches its predetermined operating level the pump will automatically turn on. As the tank empties the float will come back down to its low level. Once the float is at its low level the pump will shut off automatically.

To use the pump, feed the power cable through the hole at the top of the tank and plug into the socket on the motor head between the two motor switches. Connect the water discharge tube to the pump outlet and position the hose to drain.

The EV-60-P has two switches. The one on the left is red and turns one vacuum motor on and off. The one on the right is black and has three positions:

- Middle position (designated "0"): The off position for the second vacuum motor.
- Up position (designated "I"): Turns the second vacuum motor on but does not allow the pump to activate.
- Down position (designated "II"): allows the pump to activate (but not the second vacuum motor). The pump still activates via a float switch on the pump in the tank.

**TROUBLESHOOTING**

For loss of suction:

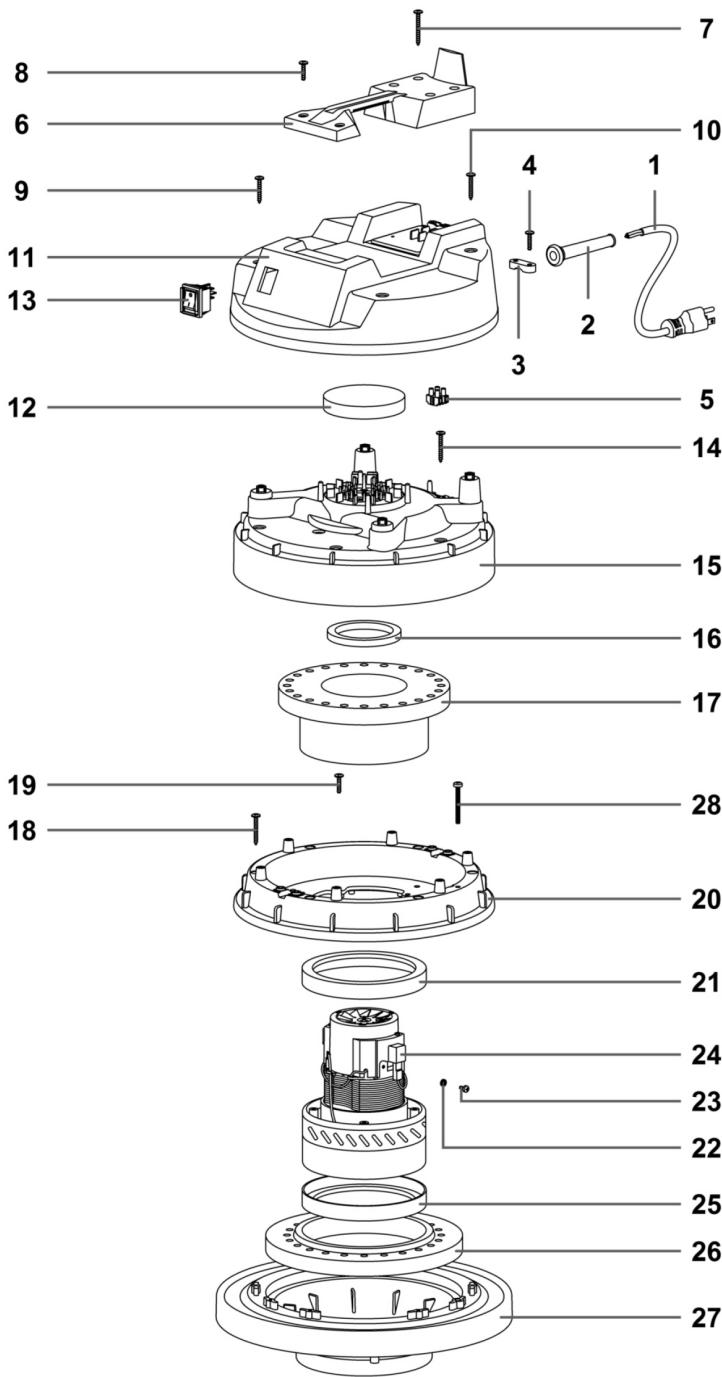
- Check for clogged filters
- Check hose and tools for obstructions or holes
- Check vacuum intake port for clogging
- Check for proper seal between collection tank and motor head

**TECHNICAL DATA**

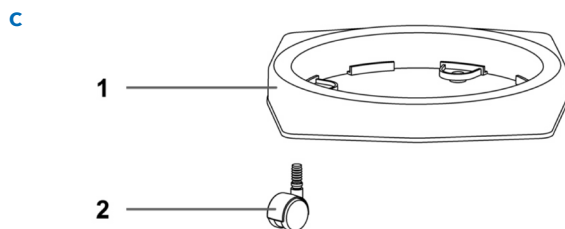
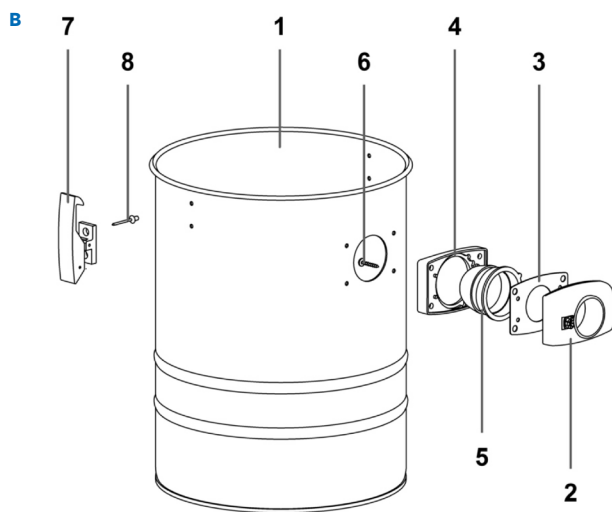
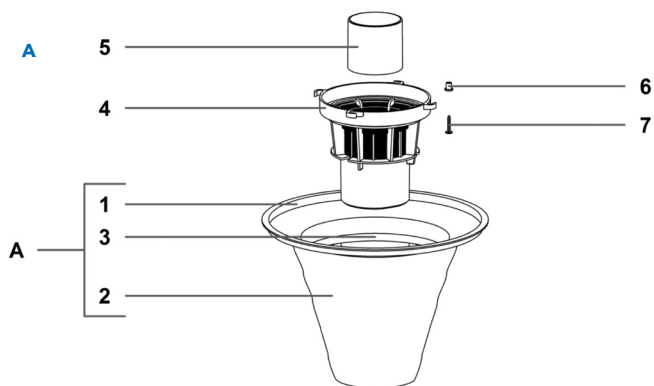
Specifications	EV-30	EV-60-T	EV-60-P
Motor Power:	1.6 HP	2 HP (total)	2 HP (total)
Input Power:	Standard: 10 amps, 115 V, 60 Hz AC Optional: 5 amps, 230 V, 50 Hz	Standard: 16 amps, 115 V, 50/60 Hz AC Optional: 8 amps, 230 V, 50/60 Hz	Standard: 16 amps, 115 V, 50/60 Hz AC Optional: 8 amps, 230 V, 50/60 Hz
Power Supply Cord:	27',16-3/ 8.2m	27',16-3/ 8.2m	27',16-3/ 8.2m
Static Water Lift:	85" (216 cm)	82" (208 cm)	82" (208 cm)
Air Displacement:	90 CFM (2.55 m 3 m)	120 CFM (3.4 m 3 m)	120 CFM (3.4 m 3 m)
Filtration:	15 microns polyester	15 microns polyester	N/A
Tank:	8.4 gallons (31.8 L) stainless steel	20.6 gallon (78 L) stainless steel	20.6 gal (78 L) stainless steel
Dry Capacity:	5 gallons (18.9 L)	14 gallons (53 L)	N/A
Wet Capacity:	5.8 gallons (22 L)	12 gallons (45.5 L)	11 gallons (41.6 L)
Noise Level:	78 dBA	79 dBA	79 dBA
Dimensions:	13" (33 cm) diameter tank x 28" (71.1 cm) high	17" (43.2 cm) diameter tank x 38" (96.5 cm) high	17" (43.2 cm) diameter tank x 38" (96.5 cm) high
Weight:	22 lbs (10 kg)	53 lbs (24 kg)	69 lbs (31 kg)

# PARTS BREAKDOWN

EV-30



Ref	Part Number	Description	Qty
-----	EV-30-HEAD	Complete EV-30 Head Assembly	
1	80-MECV35825	Power Cord 16-3	1
2	80-MEVR02216	Cord Strainer	1
3	80-MPVR28690	Cable Clamp	1
4	80-VTVT71961	Screw 5x20	2
5	80-MECB01155	Terminal Board	1
6	80-MPVR09691	Handle	1
7	80-VTVT72106	Screw 5x40	4
8	80-VTVT71961	Screw 5x20	2
9	80-VTVT71966	Screw 5x30	2
10	80-VTVT71966	Screw 5x30	2
11	80-3734	Grey Cover	1
12	80-3937	Filter H=15 D.95	1
13	8013	Water Resistant Switch	1
14	80-VTVT71971	Screw 5x35	6
15	80-2738	Motor Cover	1
16	80-3969	Washer H8 D85x65	1
17	80-FTDP38066	Gasket	1
18	80-VTVT71971	Screw 5x35	6
19	80-VTVT71961	Screw 5x20	4
20	80-MPVR08399	Motor Fastener Plate, Grey	1
21	80-3901	"L" Gasket Without Holes	1
22	80-VTRS00393	M4 Tooth Washer	1
23	80-VTVT01037	Screw M4x8	1
24	8021	1000W Motor, 60 Hz	1
25	80-GUGO28683	"L" Gasket Without Holes	1
26	80-FTDP38067	Plastic Washer, 65mm 18D 230x145	1
27	80-1189GP	Base With Gasket	1
28	80-VTVT01272	Screw 5x45	1





**A**

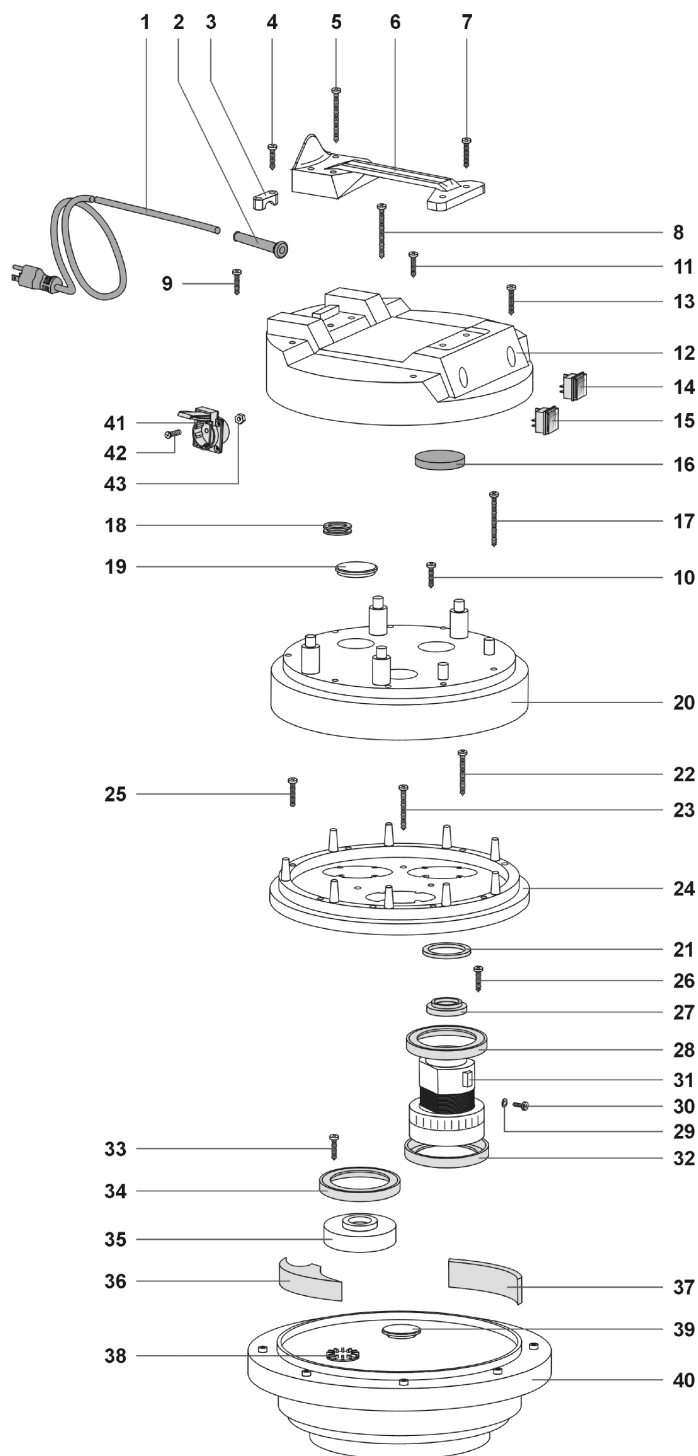
Ref	Part Number	Description	Qty
-----	80-KTRI04088	Filter Kit Assembly	
A	EV-30-FILTER	Filter Assembly	1
1	80-MPVR36522	Filter Ring	1
2	80-FTDP00534	Poly Filter	1
3	8071	Conical Basket	1
4	80-21243	Antifoam Body	1
5	80-RCGR40008	High Float	1
6	80-MPVR35796	Plastic Sleeve	4
7	80-VTVT36751	Screw 5x25	4

**B**

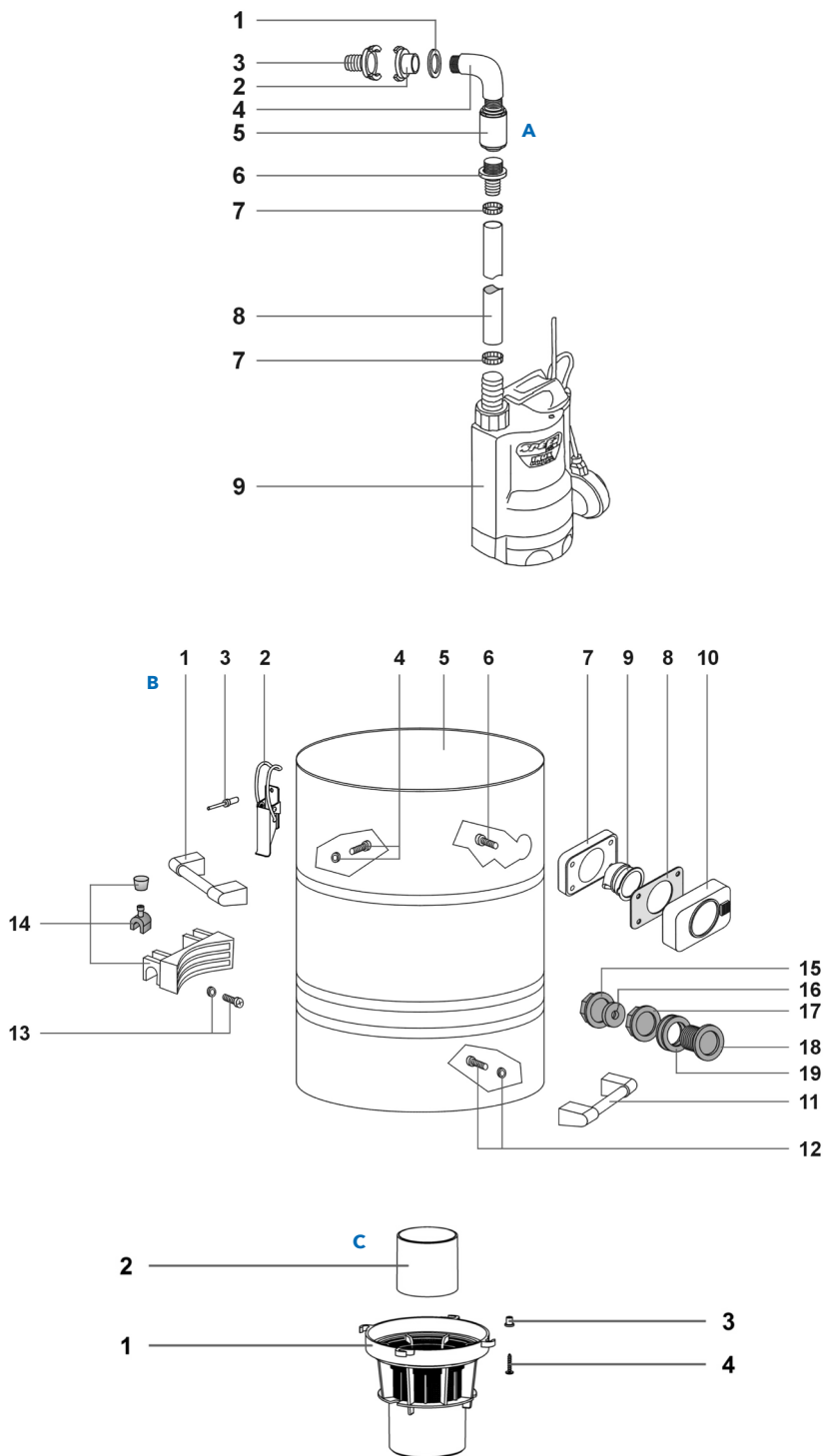
Ref	Part Number	Description	Qty
-----	EV-30-TANK-ASSY	Complete Tank Assembly	
1	80-LAFN28800	Collection Tank	1
-----	8067	Complete Manifold Assembly (Parts 2-5)	1
2	80-MPVR09004	Pipe Union	1
3	8067-1	Gasket	1
4	80-MPVR08681	Grey Gasket	1
5	80-MPVR28696	Deflector	1
6	80-VTVT71966	Screw 5x30	4
7	8085-1	Plastic Hook	2
8	80-VTVR71991	Rivet 5x11	4

**C**

Ref	Part Number	Description	Qty
-----	80-MPVR28703	Complete Trolley	
1	80-MPVR07923	Trolley Body	1
2	80-RTRT42006	Trolley Wheels	4



Ref	Part Number	Description	Qty
-----	80-PMTA07544	Complete EV-60-P Head Assembly	
1	80-MECB01441	14-3 Power Cord	1
2	80-MEVR02216	Cord Strainer	1
3	80-MPVR28690	Cable Clamp	1
4	80-VTVT71961	Screw 5x20	2
5	80-VTVT32295	Screw 5x50	4
6	8017	Handle	1
7	80-VTVT72055	Screw 5x25	2
8	80-VTVT32295	Screw 5x50	2
9	80-VTVT71960	Screw 5x14	2
10	80-VTVT71960	Screw 5x14	1
11	80-VTVT71961	Screw 5x20	2
12	8083	Cover	1
13	80-VTVT72055	Screw 5x25	2
14	80-MECI28744	Water Resistant Power Switch	1
15	8079	Pump Power Switch	1
16	80-3937	Filter	2
17	80-VTVT40007	Screw 5x55	9
18	80-MEVR72017	Grommet	1
19	80-MPVR09575	Cap	1
20	80-MPVR08494	Motor Cover	1
21	80-MPVR38371	Washer D85x65	2
22	80-VTVT72106	Screw 5x40	9
23	80-VTVT72106	Screw 5x40	3
24	80-MPVR09318	Motor Fastener Plate, Grey	1
25	80-VTVT01181	Screw 5x30	1
26	80-VTVT71961	Screw 5x20	8
27	80-MPVR07611	Motor Ring	2
28	80-3901	"L" Gasket Without Holes	2
29	80-3969	Tooth Lock Washer M4	2
30	80-VTVT01037	Screw M4x8	2
31	8022	Motor 800W	2
32	80-3901	"L" Gasket	2
33	80-VTVT71961	Screw 5x20	4
34	80-GUGO28683	"L" Gasket	1
35	80-MPVR08575	Fake Motor	1
36	80-3454	Anti-Noise Triangle	3
37	80-3456	Gasket	3
38	80-MPVR28748	Automatic Valve	2
39	80-MPVR38058	Base Cap	1
40	8062	Base	1
41	80- MEVR38061	Socket with Protection	1
42	80- VTVT01192	Screw M4x12	4
43	80- VTDD00232	M4 Nut	4



## A

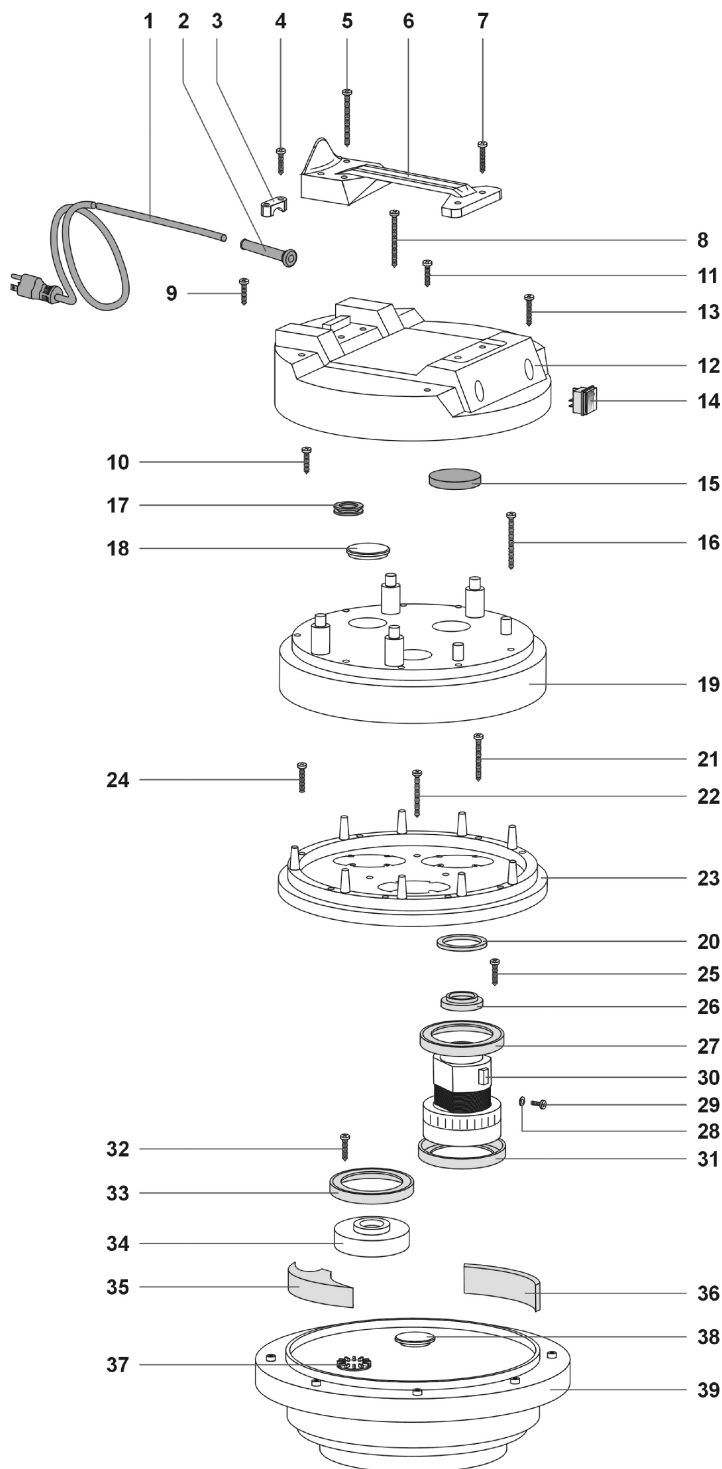
Ref	Part Number	Description	Qty
-----	8008-PUMP-ASSM	Complete Pump Assembly	
1	80-VTRS00436	Washer to 1" NPT (or 1 piece 8008-8)	2
2	8061-2	Quick Connect Fitting Female	1
3	8061	Quick Connect Brass Coupling	1
4	8008-6	90° Brass Elbow	1
5	8008-2	Check Valve	1
6	8008-7	Brass Hose Fitting	1
7	8008-4	Hose Clamps	2
8	8008-3	Antifreeze tube, D30	0.1
9	8008-1	Sump Pump, 115V 60 Hz	1

## B

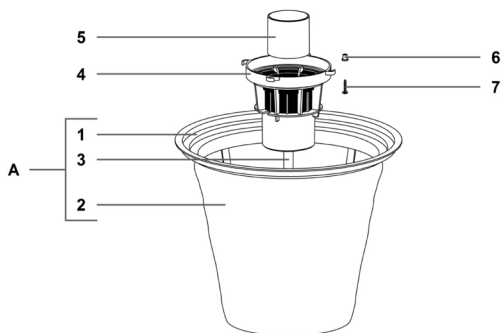
Ref	Part Number	Description	Qty
1	80-MPVR28765	Tank Handle	2
2	80-CHVR40000	Metal Hook	2
3	80-VTVR71991	Rivet 5x11	4
4	80-PMVR02551	Sealing Screw	8
5	80-LAFN09987	Tank	1
6	80-VTVT71966	Screw 5x30	4
-----	8067	Complete Manifold Assembly (Parts 7-10)	1
7	80-MPVR08681	Grey Gasket	1
8	8067-1	Gasket	1
9	80-MPVR28696	Deflector	1
10	80-MPVR09004	Pipe Union	1
11	80-MPVR28765	Tank Handle	1
12	80-PMVR02551	Seal With Screw	4
13	80-RIGE00015	Complete Seal	4
14	80-MPVR06993	Hinge	1
15	80-MPVR06804	Ring Nut	1
16	80-MEVR01793	"SUB" Fairlead	1
17	80-MPVR05731	1-1/2" Connection	1
18	80-MPVR10134	Pipe union	1
19	80-GUVR00385	1-1/2" Gasket	2

## C

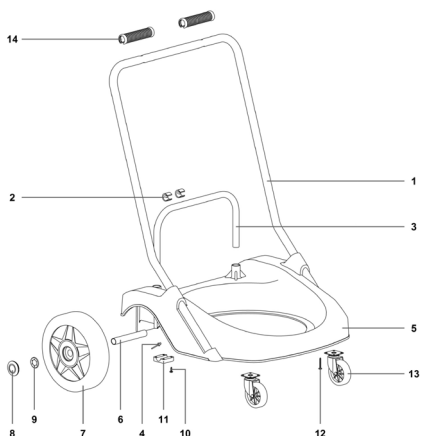
Ref	Part Number	Description	Qty
-----	80-KTRI49345	Complete Antifoam Kit	
1	80-21243	Antifoam Body	1
2	80-RCGR40008	Float With Gasket	1
3	80-MPVR35796	Plastic Sleeve	4
4	80-VTVT36751	Screw 5x25	4



Ref	Part Number	Description	Qty
-----	80-PMTA07543	Complete EV-60-T Head Assembly	
1	80-MECB01441	14-3 Power Cord	1
2	80-MEVR02216	Cord Strainer	1
3	80-MPVR28690	Cable Clamp	1
4	80-VTVT71961	Screw 5x20	2
5	80-VTVT32295	Screw 5x50	4
6	8017	Handle	1
7	80-VTVT72055	Screw 5x25	2
8	80-VTVT32295	Screw 5x50	2
9	80-VTVT71960	Screw 5x14	2
10	80-VTVT71960	Screw 5x14	1
11	80-VTVT71961	Screw 5x20	2
12	8083	Cover	1
13	80-VTVT72055	Screw 5x25	2
14	80-MECI28744	Water Resistant Power Switch	1
15	80-3937	Filter	2
16	80-VTVT40007	Screw 5x55	9
17	80-MEVR72017	Grommet	1
18	80-MPVR09575	Cap	1
19	80-MPVR08494	Motor Cover	1
20	80-3969	Washer D85x65	2
21	80-VTVT72106	Screw 5x40	9
22	80-VTVT72106	Screw 5x40	3
23	80-MPVR09318	Motor Fastener Plate, Grey	1
24	80-VTVT01181	Screw 5x30	1
25	80-VTVT71961	Screw 5x20	8
26	80-MPVR07611	Motor Ring	2
27	80-3901	"L" Gasket Without Holes	2
28	80-VTRS00393	Tooth Lock Washer M4	2
29	80-VTVT01037	Screw M4x8	2
30	8022	Motor 800W	2
31	80-3901	"L" Gasket	2
32	80-VTVT71961	Screw 5x20	4
33	80-3901	"L" Gasket	1
34	80-MPVR08575	Fake Motor	1
35	80-3454	Anti-Noise Triangle	3
36	80-3456	Gasket	3
37	80-MPVR28748	Automatic Valve	2
38	80-MPVR38058	Base Cap	1
39	8062	Base	1



Ref	Part Number	Description	Qty
-----	80-KTRI72194	Complete Filter Kit	
A	80-KTRI02949	Filter Assembly	1
1	80-MPVR35495	Filter Ring	1
2	80-FTDP00523	Poly Filter	1
3	80-MPVR09199	Basket	1
4	80-21243	Antifoam Body	1
5	80-RCGR40008	Float With Gasket	1
6	80-MPVR35796	Plastic Sleeve	4
7	80-VTVT36751	Screw 5x25	4

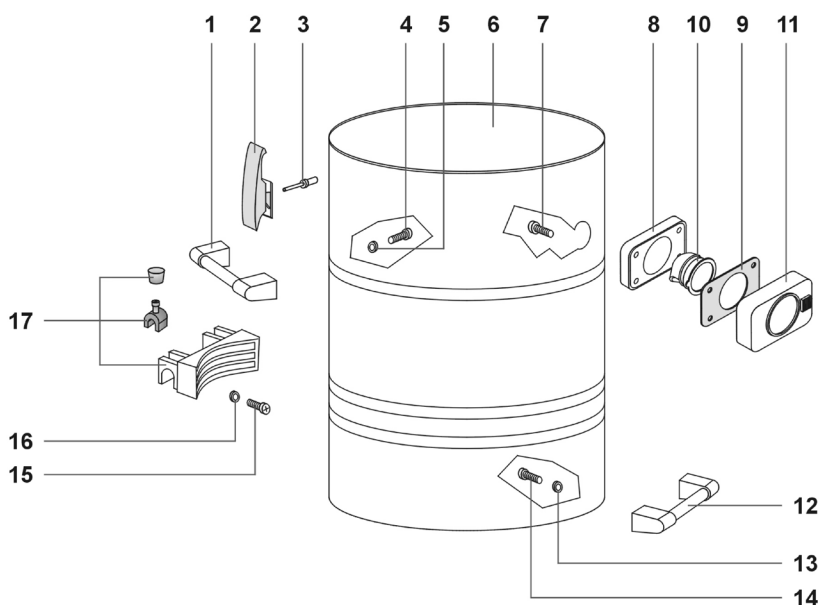


### Available Accessories

Part #	Description
8010	Vinyl Discharge Hose
8023	8½' (259 cm) Vinyl Crush Proof Hose
8024	3" (7.62 cm) Dusting Brush
8025	16" (40.6 cm) Squeegee Floor Tool
8026	16" (40.6 cm) Floor Brush
8027	9½" (24.13 cm) Crevice Tool
8028	Extension Tube
8029	Angled Connector

Ref	Part Number	Description	Qty
-----	80-CARR01374	Complete Trolley Assembly	
1	8072	Black Handle	1
2	8030	Positioning Hinge	2
3	80-LAFN28769	Chrome Handle	1
4	80-VTVR71991	Rivet 5x11	2
5	8031	Trolley	1
6	8080-4	Wheel Axel	2
7	8080-1	Wheel, 250	2
8	8016	Wheel Cap	2
9	8080-2	Washer	2
10	80-VTVT01193	Screw 5x35	8
11	80-MPVR28774	Axel Support	2
12	80-VTVT71971	Screw 5x35	8
13	8015	Swivel Caster	2
14	80-MPVR02288	Handle Grips	2





Ref	Part Number	Description	Qty
-----	8069	Complete Tank Assembly	
1	80-MPVR28765	Tank Handle	2
2	8085-1	Plastic Latches	2
3	80-VTVR71991	Rivet 5x11	4
4	80-VTVT71966	Screw 5x30	8
5	80-VTRS00421	Rubber Washer	1
6	80-LAFN08260	Tank	1
7	80-VTVT71966	Screw 5x30	4
-----	8067	Complete Manifold Assembly (Parts 8-11)	1
8	80-MPVR08681	Grey Gasket	1
9	8067-1	Gasket	1
10	80-MPVR28696	Deflector	1
11	80-MPVR09004	Pipe Union	1
12	80-MPVR28765	Tank Handle	1
13	80-VTRS00421	Rubber Washer	1
14	80-VTVT71966	Screw 5x30	4
15	80-VTVT71966	Screw 5x30	4
16	80-VTRS00421	Rubber Washer	1
17	80-MPVR06993	Complete Hinge	1



## HVAC & FACILITY MAINTENANCE SOLUTIONS

---

Provides innovative maintenance solutions for a wide variety of industries including commercial HVAC, food and beverage processing, power generation and manufacturing.

**For Sales Call: 1-800-333-7467**  
**For Service Call: 1-800-370-2855**

**GOODWAY® TECHNOLOGIES CORPORATION**  
420 West Avenue, Stamford, CT 06902 USA

**Tel:** 203-359-4708 · **Toll-Free Tel:** 800-243-7932  
**Fax:** 203-359-9601 · **Toll-Free Fax:** 800-359-9625  
**Email:** [goodway@goodway.com](mailto:goodway@goodway.com)  
**Visit:** [www.goodway.com](http://www.goodway.com)

P/N MNL-EV3060

**©Copyright 2018 Goodway Technologies Corp., Stamford, CT USA**

Effective date January 17, 2019

Goodway is a Trademark of Crossford International.  
Goodway reserves the right to improve products; contact the factory for the latest configuration and uses.