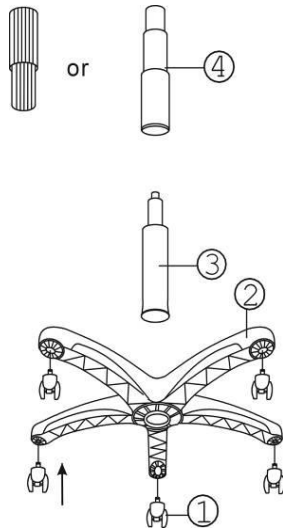


Remove all items from the carton. Verify all pieces before assembly

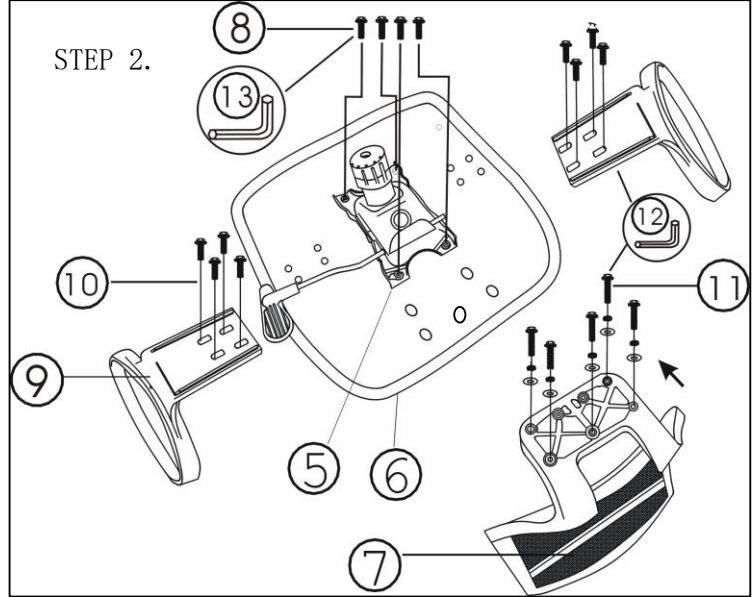
## PART LIST

| KEY | QTY | DESCRIPTION     | KEY | QTY | DESCRIPTION                  | KEY   | QTY | DESCRIPTION                                  |
|-----|-----|-----------------|-----|-----|------------------------------|---|-----|--|
| 1   | 5   | Caster          | 7   | 1   | Backrest                     | 11  | 5   | Back Attachment Screws (1/4"*2") and Washers |
| 2   | 1   | Base            | 8   | 4   | Mechanism Screws (M8*20MM)   | NOTICE: USE SCREWS WITH RED LOCTITE TO ATTACH BACKREST. |     |  |
| 3   | 1   | Seat Post       | 9   | 2   | Armrest                      |   |     |  |
| 4   | 1   | Seat Post Cover | 10  | 8   | Armrest Screws (1/4"*1-3/4") | 12  | 1   | Allen Wrench (4mm)                           |
| 5   | 1   | Mechanism       |     |     |                              | 13  | 1   | Allen Wrench (5mm)                           |
| 6   | 1   | Seat            |     |     |                              |   |     |  |

### STEP 1.



### STEP 2.

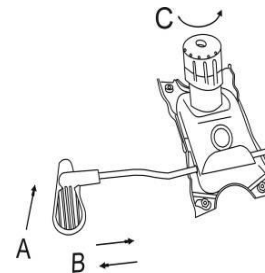


### STEP 3.



### NOTICE:

EVERY 6 MONTHS, PLEASE MAKE SURE ALL BOLTS, SCREWS AND KNOBS ARE FULLY TIGHTENED TO ENSURE STABILITY.



### MECHANISM OPERATION INSTRUCTION

#### WHILE SEATED:

- (A) SEAT HEIGHT ADJUSTMENT:  
Pull lever up. Release lever when desired position is reached
- (B) BACK TILT ADJUSTMENT:  
Pull lever out horizontally. Move backrest to tilt. To lock in upright position, push lever in.
- (C) TILT TENSION ADJUSTMENT KNOB:  
Rotate knob clockwise/counterclockwise to adjust tilt tension based on body weight.

### PREVENTIVE MAINTENANCE AND WARNING!

- USE THIS PRODUCT ONLY FOR SEATING ONE PERSON AT A TIME.
- DO NOT USE THIS CHAIR AS A STEP STOOL/LADDER.
- DO NOT SIT ON ANY PART OF THE CHAIR EXCEPT THE SEAT.
- DO NOT USE CHAIR ON UNEVEN FLOOR SURFACES.
- DO NOT USE CHAIR UNLESS ALL BOLTS, SCREWS AND KNOBS ARE TIGHT. AT LEAST EVERY SIX MONTHS, CHECK ALL BOLTS, SCREWS AND KNOBS TO BE SURE THEY ARE TIGHT.
- IF ANY PARTS ARE MISSING, BROKEN, DAMAGED OR WORN, STOP USE OF THE PRODUCT UNTIL REPAIRS ARE MADE USING FACTORY AUTHORIZED PARTS.
- DISPOSE OF PACKAGING PROPERLY. PLASTIC BAG IS NOT A TOY. DO NOT USE PLASTIC BAG AS HEAD COVERING-IT MAY CAUSE SUFFOCATION.
- FAILURE TO FOLLOW THESE WARNINGS COULD RESULT IN SERIOUS INJURY.