

## EP-788

*Wrapstik Economy*

### *loading instructions*

IT IS THE RESPONSIBILITY OF THE CUSTOMER TO ENSURE THAT  
ALL OPERATORS AND SERVICE PERSONNEL HAVE FULLY READ  
AND UNDERSTOOD THIS DOCUMENT

**READ ALL INSTRUCTIONS BEFORE OPERATING TOOL.  
FAILURE TO FOLLOW ANY OF THESE GUIDELINES COULD  
RESULT IN SERIOUS OR FATAL INJURY**



P (847) 735-8105 | F (847) 735-8297  
sales@encorepack.com | www.encorepack.com



201 Park Avenue, Lake Villa, IL 60046  
P.O. Box 595, Winnetka, IL 60093



# IMPORTANT



PLEASE READ PRIOR TO USAGE

To ensure operator safety, it is important that all personnel use proper safety and handling procedures. This safety booklet is designed to educate operators on the safe use of the EP-788 Wrapstik Economy. All personnel must read and understand this booklet prior to using this product. Failure to follow any of the recommendations in this pamphlet can result in serious injury or death.

## READ PRODUCT SAFETY LABELS

- Read and understand all safety labels on the tool
- Replace all damaged or missing labels

## READ THE INSTRUCTIONS

Before operating this tool, read, and understand all safety, operation, and maintenance information provided in the manual which is packaged with the tool. If you do not have a manual or need extra copies, please contact your Sales Representative. Tool must be inspected for wear and tear on a daily basis with proper daily documentation.



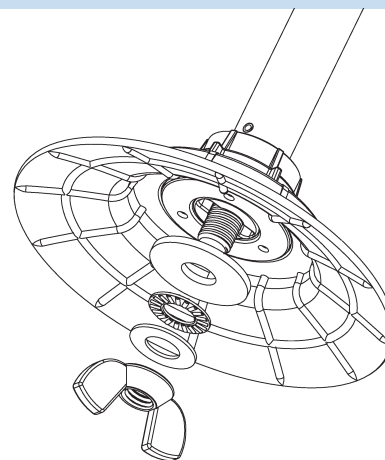
Terms & Conditions are found on our website: <https://www.encorepack.com/legal.php>

Please read our Terms & Conditions carefully prior to using or obtaining any materials, information products or services of **Encore Packaging LLC**, an Illinois limited liability company with a place of business at **201 Park Avenue, Lake Villa, IL 60046**.

P (847) 735-8105 | F (847) 735-8297  201 Park Avenue, Lake Villa, IL 60046  
sales@encorepack.com | www.encorepack.com P.O. Box 595, Winnetka, IL 60093

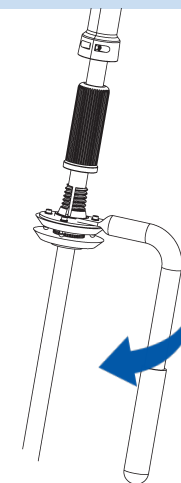
## LOADING INSTRUCTIONS

### Step 1



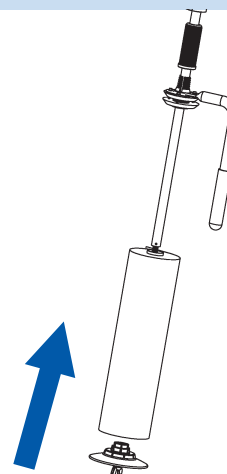
1. Unscrew the Wing Nut, Flat Washer, Thrust Bearing, Flat Washer from the Bottom Disk. Pull off Bottom Disk from the Conduit Tube.

### Step 2



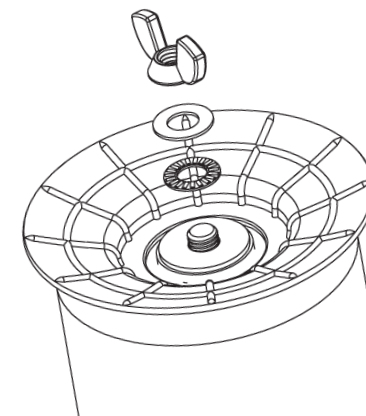
2. Loosen the Handle, from the Tube Adaptor by unscrewing it.

### Step 3



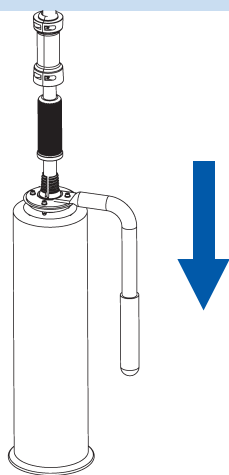
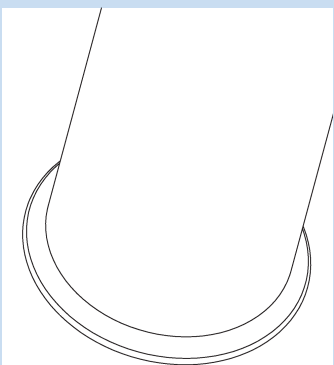
3. Slide the stretch film roll onto the Conduit Tube.

### Step 4



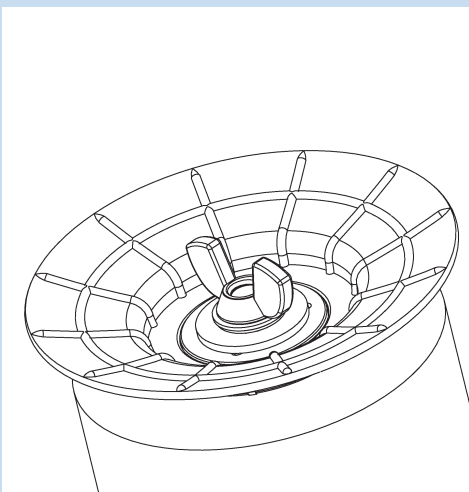
4. Push the Bottom Disk (1) back onto the Conduit Tube. Proceed to add the Flat Washer, Thrust Bearing, and Flat Washer. Screw in the Wing nut until a third of the rod is in.

### Step 5



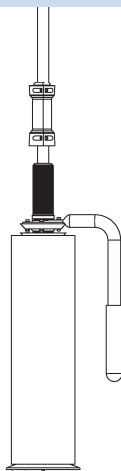
5. Once those parts are in place, position the stretch film roll so it is concentric with the Bottom Disk (1). Push the Handle down until the bottom disk of the handle is up against the stretch film roll. Hold the core of the Handle down with force, as you screw the Tube Adaptor into the Handle.

### Step 6



6. When the handle is securely locked in place, screw in the Wing Nut completely.

### Step 7



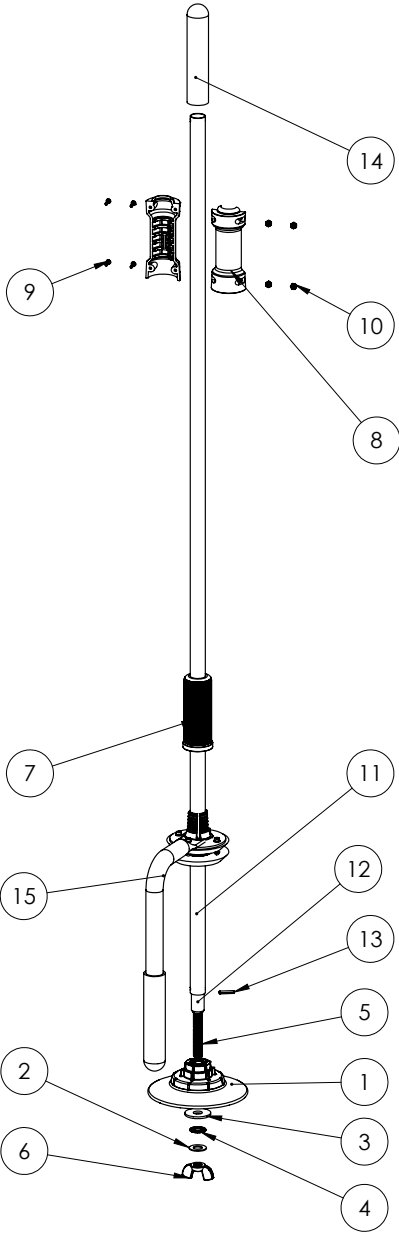
7. The stretch film roll is now snug in between the Bottom Disk and the Handle. Now the unit is ready to use.

*This page have been intentionally left blank*

# EP-788

## Parts List

ITEM NO.	PART NUMBER	DESCRIPTION	QTY.
1	E790-05	Bottom Disk	1
2	E800-06-F	Flat Washer	1
3	E800-06-D	Flat Washer	1
4	E800-06-G	Thrust Bearing	1
5	E788-02	5" Threaded Rod	1
6	E830-08	Wing Nut	1
7	E830-10-A	Tube Adaptor	1
8	E790-06	Slide Grip Handle	1
9	E790-12	Pan Head Screw	4
10	E790-13	Nylock Hex Nut	4
11	E788-01	54in. Conduit Tube	1
12	E840-08-A	Tube Insert	1
13	E800-06-C	Slotted Spring Pin	1
14	E800-02	Handle Grip	1
15	E788-03	Handle Assembly	1



3/1/2023



P (847) 735-8105 | F (847) 735-8297  
sales@encorepack.com | www.encorepack.com



201 Park Avenue, Lake Villa, IL 60046  
P.O. Box 595, Winnetka, IL 60093