

EP-745-48-60

Poly Tubing, Kraft Paper, & Stretch Film Dispenser - 48-60"

loading instructions

IT IS THE RESPONSIBILITY OF THE CUSTOMER TO ENSURE THAT
ALL OPERATORS AND SERVICE PERSONNEL HAVE FULLY READ
AND UNDERSTOOD THIS DOCUMENT

**READ ALL INSTRUCTIONS BEFORE OPERATING TOOL.
FAILURE TO FOLLOW ANY OF THESE GUIDELINES COULD
RESULT IN SERIOUS OR FATAL INJURY**



P (847) 735-8105 | F (847) 735-8297
sales@encorepack.com | www.encorepack.com



201 Park Avenue, Lake Villa, IL 60046
P.O. Box 595, Winnetka, IL 60093



IMPORTANT



PLEASE READ PRIOR TO USAGE

To ensure operator safety, it is important that all personnel use proper safety and handling procedures. This safety booklet is designed to educate operators on the safe use of the EP-745-48-60 Poly Tubing, Kraft Paper, & Stretch Film Dispenser - 48-60". All personnel must read and understand this booklet prior to using this product. Failure to follow any of the recommendations in this pamphlet can result in serious injury or death.

READ PRODUCT SAFETY LABELS

- Read and understand all safety labels on the tool
- Replace all damaged or missing labels

READ THE INSTRUCTIONS

Before operating this tool, read, and understand all safety, operation, and maintenance information provided in the manual which is packaged with the tool. If you do not have a manual or need extra copies, please contact your Sales Representative. Tool must be inspected for wear and tear on a daily basis with proper daily documentation.



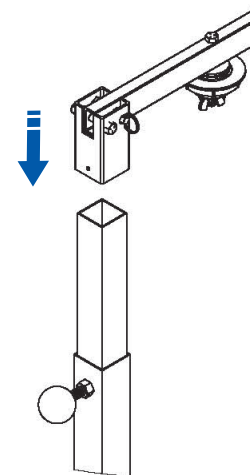
Terms & Conditions are found on our website: <https://www.encorepack.com/legal.php>

Please read our Terms & Conditions carefully prior to using or obtaining any materials, information products or services of **Encore Packaging LLC**, an Illinois limited liability company with a place of business at **201 Park Avenue, Lake Villa, IL 60046**.

P (847) 735-8105 | F (847) 735-8297  201 Park Avenue, Lake Villa, IL 60046
sales@encorepack.com | www.encorepack.com P.O. Box 595, Winnetka, IL 60093

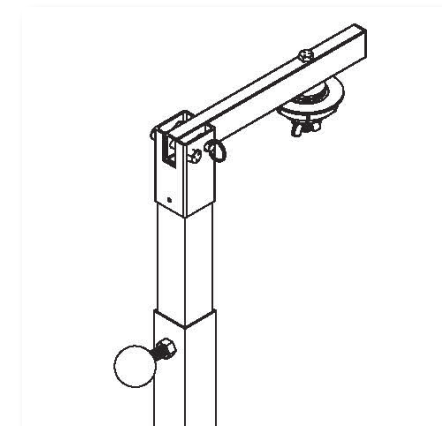
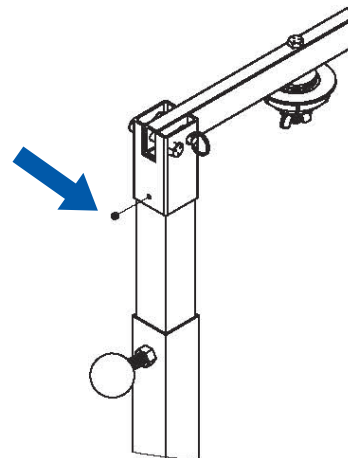
ASSEMBLY INSTRUCTIONS

Step 1



1) Slide Arm Support Assembly onto the Mast so that the top of the Mast is flush with the cut out of the Arm Support Assembly.

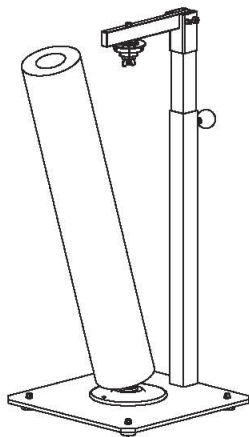
Step 2



2) Then secure Arm Support Assembly to the mast with the Plug Screw.

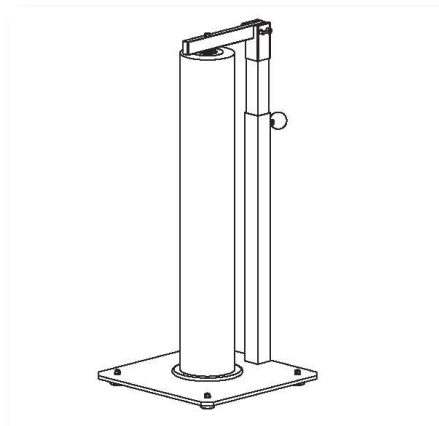
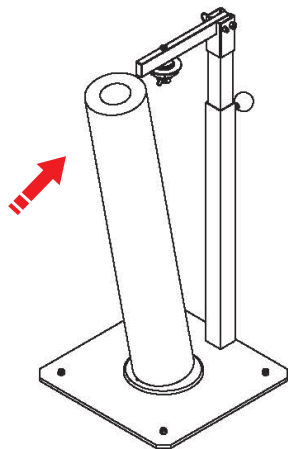
LOADING INSTRUCTIONS

Step 1



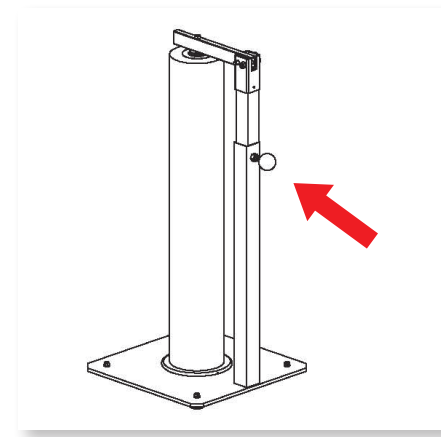
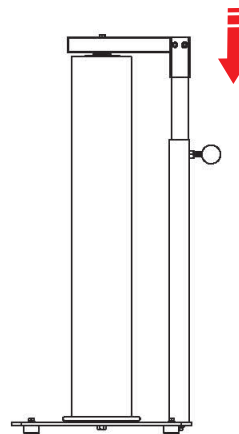
1) Grab and align the lower end of the roll with the bottom core of the dispenser.

Step 2



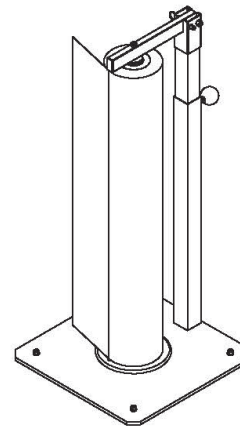
2) Next, use the telescoping height to adjust the top arm so that it is snug above the roll, with the core in the center of the roll.

Step 3



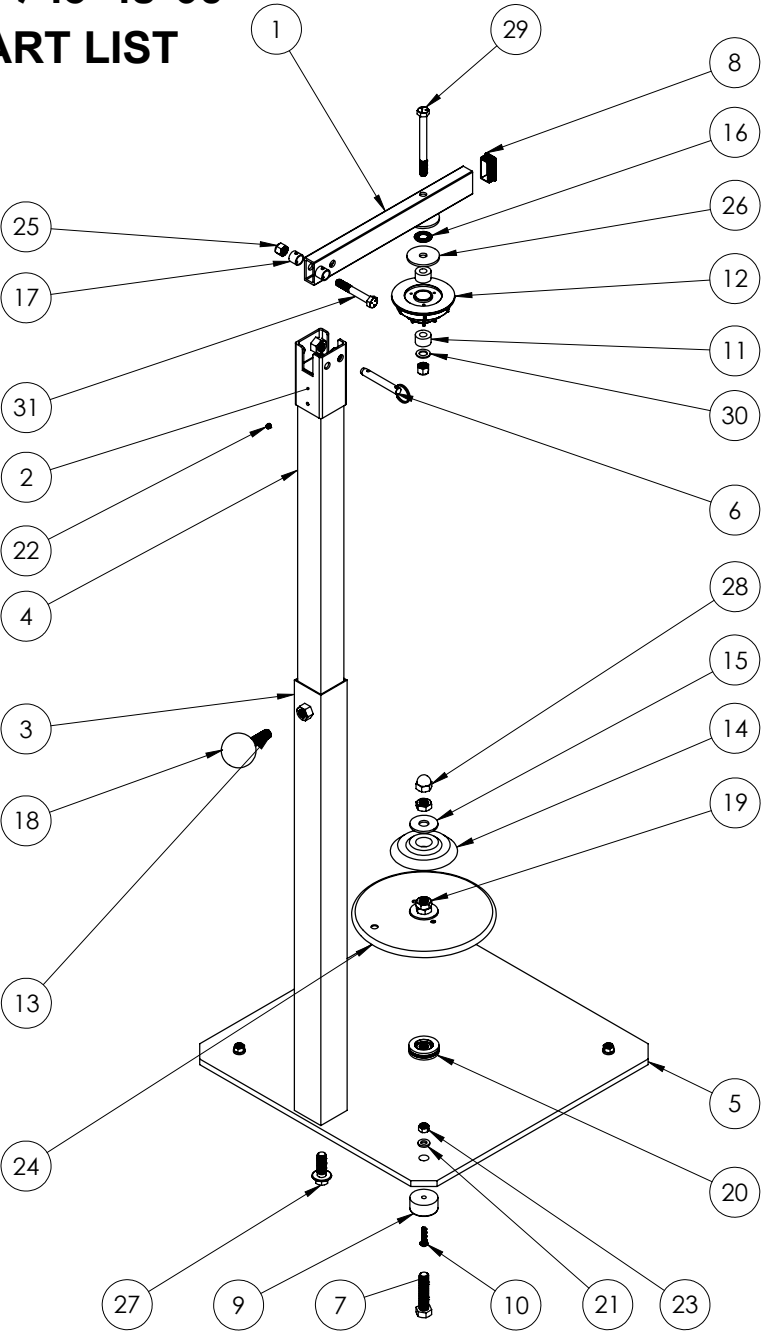
3) Once the roll is in place, apply downward pressure to the top arm as you secure the mast in place with the knob located on the side of the vertical frame.

Step 4



4) Roll is now secured to be dispensed as needed.

EP-745-48-60 PART LIST



1/8/2024 REV C

ITEM NO.	PART NUMBER	DESCRIPTION	QTY.
1	E745-01-A	Arm	1
2	E745-11	Arm Support Assembly	1
3	E745-02	Mast Assembly	1
4	E745-02-A-48-60	Mast	1
5	E745-03-B	Large Base	1
6	E745-04	Quick Release Pin	1
7	E745-05-A	1/2-13 Hex Bolt	1
8	E745-06-A	Rectangle Cap	1
9	E745-07	Bumper	4
10	E745-07-A	Bumper Bolt	4
11	E745-08	Insert	2
12	E790-08-23	Top Disk	1
13	E795-07	.5-13 Threaded Rod	1
14	E800-03	Bottom Core	1
15	E800-06-D	Flat Washer	2
16	E800-06-G	Thrust Bearing	1
17	E800-07-H	Aluminum Collar	2
18	E820-06-L	Ball Knob	1
19	E830-05	Hex Nut	4
20	E840-03	Bearing	1
21	E1225-12	Washer	4
22	E1425-11	Plug Screw	1
23	E1900-07	Hex Nut	4
24	E3040-12-8	8" Disk Insert	1
25	E3065-19	3/8" Nylock Hex Nut	2
26	E3200-04-M	.125in. Flat Washer	2
27	E3500-11	M12 Flange HHS x 35mm	1
28	E5920-11	Cap Nut	1
29	E5960-02-48	Hex Head Bolt	1
30	E5960-04	Washer	1
31	E6420-12	Hex Head Bolt	1



P (847) 735-8105 | F (847) 735-8297
sales@encorepack.com | www.encorepack.com



201 Park Avenue, Lake Villa, IL 60046
P.O. Box 595, Winnetka, IL 60093