

EP-6480-24

Automatic Sheet Cutter 24"

usage instructions

IT IS THE RESPONSIBILITY OF THE CUSTOMER TO ENSURE THAT
ALL OPERATORS AND SERVICE PERSONNEL HAVE FULLY READ
AND UNDERSTOOD THIS DOCUMENT

**READ ALL INSTRUCTIONS BEFORE OPERATING TOOLS.
FAILURE TO FOLLOW ANY OF THESE GUIDELINES COULD
RESULT IN SERIOUS OR FATAL INJURY**



P (847) 735-8105 | F (847) 735-8297
sales@encorepack.com | www.encorepack.com



201 Park Avenue, Lake Villa, IL 60046
P.O. Box 595, Winnetka, IL 60093



IMPORTANT



PLEASE READ PRIOR TO USAGE

To ensure operator safety, it is important that all personnel use proper safety and handling procedures. This safety booklet is designed to educate operators on the safe assembly & use of the EP-6480 Automatic Sheet Cutter. All personnel must read and understand this booklet prior to using this product. Failure to follow any of the recommendations in this pamphlet can result in serious injury or death.

READ PRODUCT SAFETY LABELS

- Read and understand all safety labels on the tool
- Replace all damaged or missing labels

INSPECT THE TOOL DAILY AND REPLACE ALL WORN OR BROKEN PARTS. LUBRICATE ALL MOVING PARTS DAILY.

PRESS THE EMERGENCY STOP BUTTON FOR IMMEDIATE STOPPAGE OF MACHINE. FOLLOW THE ARROWS ON THE BUTTON TO TWIST IN ORDER TO DISENGAGE THE ESTOP.

CAUTION: LOCK OUT POWER BEFORE INSPECTION OR USE

KEEP HANDS CLEAR OF MOVING PARTS AND SHARP EDGES. THE MACHINE CONTAINS A SHARP MOVING BLADE. LOCK OUT POWER PRIOR TO SERVICING BLADE.



REMOVE BATTERY
when tool is not in use

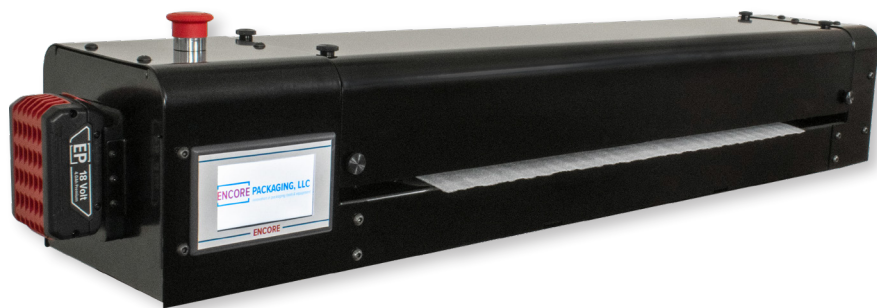


WARNING
Shear hazard.
Moving parts can cause
severe injury.
Lock out power before
inspection or use.



READ THE INSTRUCTIONS

Before operating this tool, read, and understand all safety, operation, and maintenance information provided in the manual which is packaged with the tool. If you do not have a manual or need extra copies, please contact your Sales Representative.



Terms & Conditions are found on our website: <https://www.encorepack.com/legal.php>

Please read our Terms & Conditions carefully prior to using or obtaining any materials, information products or services of **Encore Packaging LLC**, an Illinois limited liability company with a place of business at **201 Park Avenue, Lake Villa, IL 60046**.

P (847) 735-8105 | F (847) 735-8297
sales@encorepack.com | www.encorepack.com



201 Park Avenue, Lake Villa, IL 60046
P.O. Box 595, Winnetka, IL 60093

USAGE INSTRUCTIONS

Step 1



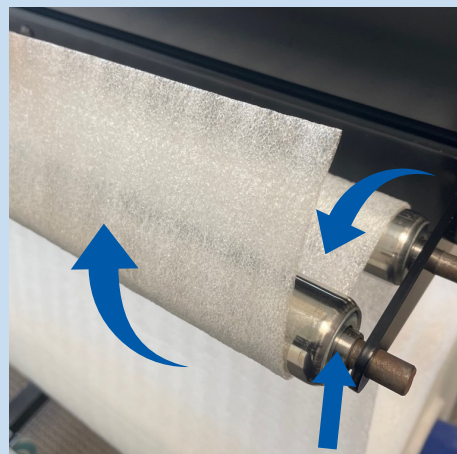
1. To turn on, insert a fully charged 18-volt battery, and turn the emergency stop button.

Step 2



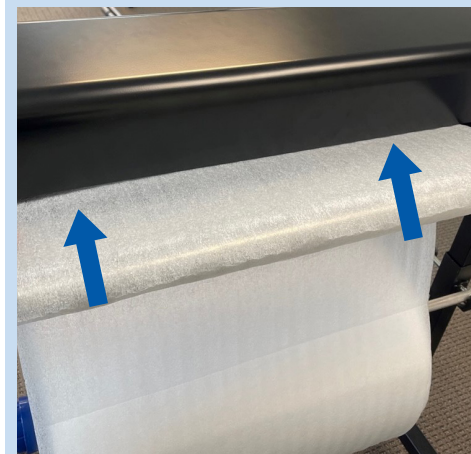
2. Flip the back switch, which raises the inner rollers and is located to the right of the outside rollers.

Step 3



3. Pull the material directly up behind the back roller. Proceed to pull it towards you as you guide it underneath and around the outside roller.

Step 4



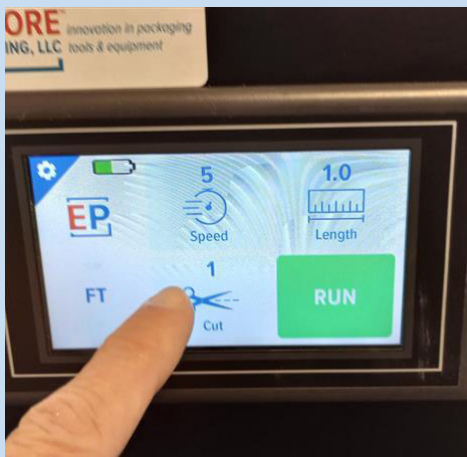
4. Once it is over the outside roller, pull and insert the material into the cutter.

Step 5



5. When the material is in place, flip the switch back to lower the inside rollers. Let go of material once the rollers are in place.

Step 6



6. Next, utilize the touchscreen to designate desired unit, speed, length, and number of cuts. When that has been inputted press Run.

This page have been intentionally left blank

Step 7



7. Material will now be pulled and cut to the settings chosen.

READ THE INSTRUCTIONS

Before operating this tool, read, and understand all safety, operation, and maintenance information provided in the manual which is packaged with the tool. If you do not have a manual or need extra copies, please contact your Sales Representative.

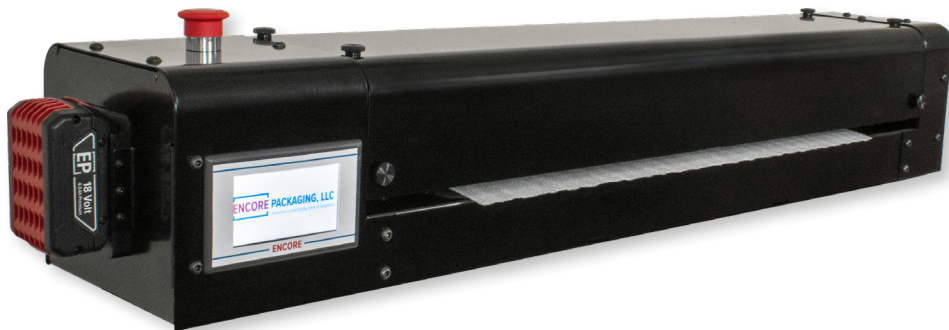
There are 3 different error screens that you can get in the EP-6480. There is a low battery error screen, a limit switch error screen, and a motor jam error screen. Let's go through each of them individually to resolve them.

1. LOW BATTERY ERROR

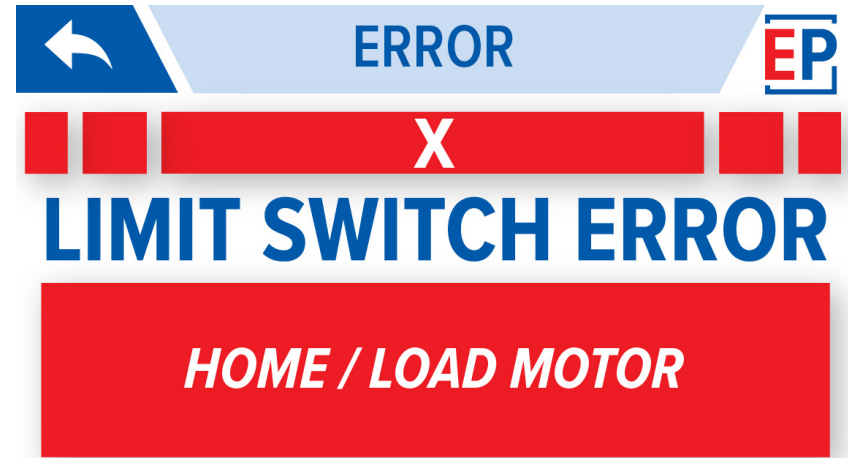
LOW BATTERY LEVEL



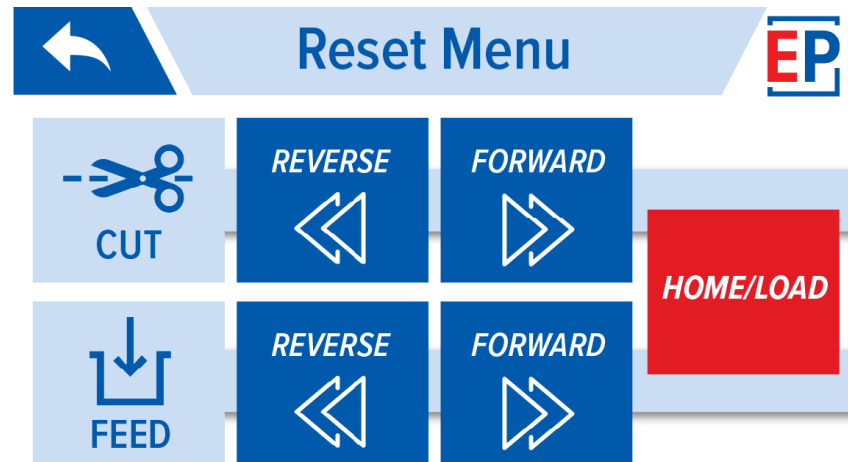
A low battery error occurs when the battery voltage reaches less than 17 volts. The machine won't run below this voltage, so the only solution is to re-charge the battery.



2. LIMIT SWITCH ERROR



The limit switch error occurs when the cutting mechanism is not in the correct starting position when the run button is pressed. When this error occurs, the above screen will pop up. Press the button that reads "HOME / LOAD MOTOR" and it will take you to the reset menu screen shown below.



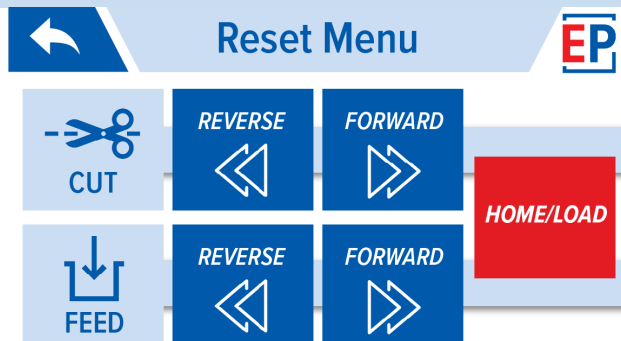
In this screen, press the button that reads "HOME / LOAD" and this will move the cutting mechanism to the correct position. Next, press the back arrow on the top left of the screen to go back to the main menu.

3. MOTOR JAM ERROR



The motor jam error occurs when the material gets caught in the feed rollers or in the cutting mechanism. When this happens, you will get the screen shown above.

Press the button that says, "PRESS HERE TO RESET MOTORS". Next, it will take you to the reset menu screen shown below.



Next, the machine needs to be unjammed. If the material got stuck in the feed rollers, use the reverse button and forward button next to the feed symbol to move the material back out.

If the material got stuck in the cutting mechanism, use the reverse and forward buttons next to the cutting symbol to move the cutting mechanism. The reverse button will move the cutting mechanism left and the forward button will move the cutting mechanism right.

Once the machine is not jammed, press the "HOME/LOAD" button to reset the cutting mechanism to avoid getting a limit switch error. Next, press the back button on the top left of the screen to return to the main menu.

This page have been intentionally left blank

EP-6480-24 PART LIST

ITEM NO.	PART NUMBER	DESCRIPTION	QTY.
1	E770-03	1in. Magnet	5
2	E1225-06-B	1/4" Nylock Hex Nut	13
3	E1260-28-C-01	Circuit Box	1
4	E1260-28-C-03	Battery Contact	2
5	E1260-28-C-06	FHCS, M3 x 0.5 -8 mm	2
6	E1260-28-C-07	M3 x 0.5 Lock Nut	4
7	E1260-28-G	BHCS, M4 X 0.7-8mm	6
8	E1260-31	Button Switch	2
9	E3080-04-E	Bracket Spring	2
10	E3200-04-H	Shaft Collar	2
11	E3450-35	M4x12 SHS	16
12	E3450-39	Rivet Nut	61
13	E5980-01-D-02	Cut Motor	1
14	E5980-15	4:1 Gearmotor	1
15	E5980-16	5V DC Voltage Regulator	1
16	E5980-19	Motor Controller	2
17	E5980-21	Idler Spindle Spring	2
18	E5980-28	M3 x 18mm	4
19	E5980-33	M4 Nylock Nut	46
20	E5985-01-G-01	M4x 16mm	4
21	E5985-02	Touch Screen Display	1
22	E5985-02-A	Display Clip	4
23	E5985-03	Limit Switch	1
24	E6480-01-A-24	24" Base	1
25	E6480-02-A	Left Side Plate	1
26	E6480-02-B	.5"-13 Weld Nut	2
27	E6480-03-A	Right Side Plate	1
28	E6480-04	Side Cover	1
29	E6480-05	Screen Side Cover	1
30	E6480-06-24	Removeable Top	1
31	E6480-07	Battery End Plate	1
32	E6480-08-A	End Plate	1
33	E6480-09-24	Bottom Cover	1
34	E6480-10-24	Cut Plate	1
35	E6480-11	Cut Plate Support	5
36	E6480-12	Cut Plate End Support	2
37	E6480-13	Support Bearing Mount	1
38	E6480-14	Idler Bracket	2

ITEM NO.	PART NUMBER	DESCRIPTION	QTY.
39	E6480-16	Idler Pivot - Left	1
40	E6480-17	Pivot Linkage - Left	1
41	E6480-18-A	Blade Fork	1
42	E6480-19	Blade Pivot	2
43	E6480-20	Motor Spacer	1
44	E6480-21-24	Linear Shaft	2
45	E6480-22	Linear Bearing	2
46	E6480-23-24	8 Start Lead Screw	1
47	E6480-24	8 Starte Lead Screw Nut	1
48	E6480-25	Bearing House	1
49	E6480-26	25mm Shaft Clamp	2
50	E6480-27-A	Bumper	2
51	E6480-27-B	Threaded Stud	2
52	E6480-28-24	Aluminum Extrusion	1
53	E6480-29-24	Drive Shaft D-Profile	1
54	E6480-31-A	Pulley 28 Teeth	1
55	E6480-32-A	Pulley 18 Teeth	1
56	E6480-33	Cut Belt	1
57	E6480-34-A	Pulley 24 Teeth	1
58	E6480-35-A	Pulley 24 Teeth	1
59	E6480-36	Drive Belt	1
60	E6480-37	Linear Actuator	2
61	E6480-37-A	Actuator Shaft	2
62	E6480-38	Actuator Switch	1
63	E6480-39	5/16"-18 FHS	2
64	E6480-40	Housing Bolt	52
65	E6480-41	Idler Bracket Bolt	12
66	E6480-42	Pivot Actuator Bolt	10
67	E6480-43	Pivot Lifting Bolt	12
68	E6480-44	Actuator Bolt	2
69	E6480-45	Extrusion Nut	4
70	E6480-46	Washer	2
71	E6480-48	Blade Pivot Shoulder Bolt	1
72	E6480-49	Blade Bearing	1
73	E6480-50	Blade Thrust Washer	2
74	E6480-51	Blade Thrust Bearing	2
75	E6480-52	Blade Shoulder Bolt	1

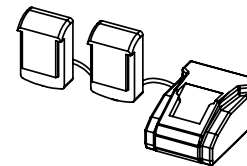
EP-6480-24 PART LIST

ITEM NO.	PART NUMBER	DESCRIPTION	QTY.
76	E6480-53	Blade 30°-.002	1
77	E6480-54	Cut Plate Spacer	14
78	E6480-55	Thumb Screw	4
79	E6480-56	Drive Roller	6
80	E6480-57	1/4"-20 Heat Set Insert	7
81	E6480-59	1/4"-20 Set Screw	2
82	E6480-60	Blade Spring	2
83	E6480-61	Pull Solenoid	2
84	E6480-62-24	Clamp Bar	2
85	E6480-63	Left Clamp Bar Mount	1
86	E6480-64	Left Entry Roller Bracket	1
87	E6480-65	Right Entry Roller Bracket	1
88	E6480-66	Spring Pin	2
89	E6480-69	Clamp Bar Stop	2
90	E6480-71	Clamp Bar Stop	2
91	E6480-74	Arduino Shield	1
92	E6480-75	Voltage Sensor	1
93	E6480-76	Relay	1
94	E6480-77	Thread Forming Screw	16
95	E6480-80-24	U-Channel	1
96	E6480-81-24	Rubber Strip	1
97	E6480-82	M4 x 25 FHS	14
98	E6480-83-24	Backside Bottom Cover	1
99	E6480-84	Long Roller	4
100	E6480-85	Carriage Spacer	2
101	E6480-86	10-24 Nut	1
102	E6480-87	Ball Bearing	2
103	E6480-88	Wave Washer	1
104	E6480-89	Motor Support	1
105	E6480-91	Lead Screw Washer	2
106	E6480-92	Emergency Stop	1
107	E6480-93	Fender washer	4
108	E6480-94	Arduino Mega	1
109	E6480-95	No. 8 Screw	4
110	E6480-98	Swivel Set Screw	2
111	E6480-100	Bumper Spacer	2

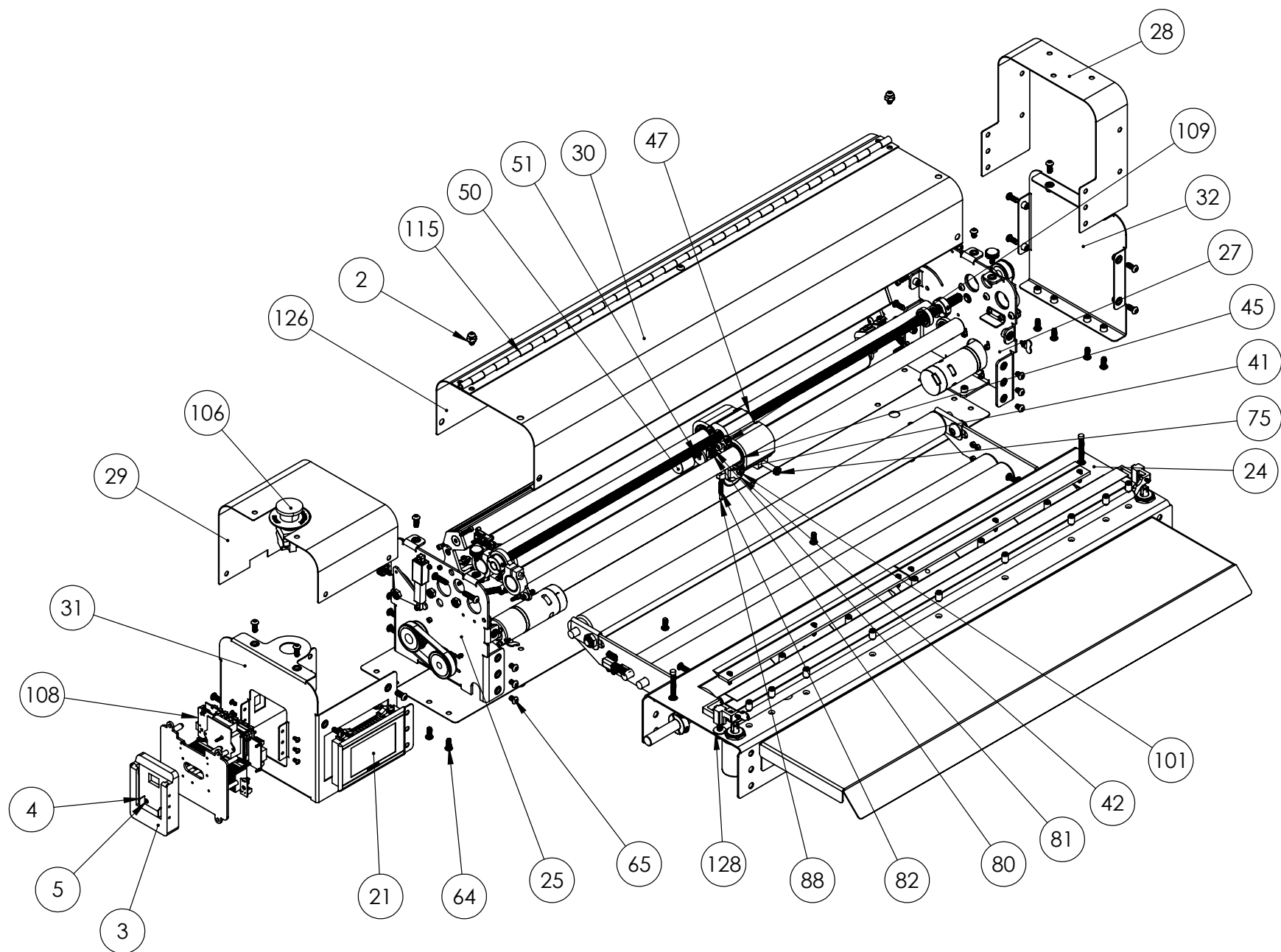
ITEM NO.	PART NUMBER	DESCRIPTION	QTY.
112	E6480-101-24	Adjustable Plastic Spacer	2
113	E6480-102	Quarter Turn Wing Nut	2
114	E6480-102-B	Quarter Turn Rivet Nut	2
115	E6480-103-24	Piano Hinge	1
116	E6480-104	1/2"-13 BHS	2
117	E6480-105	0.5-13 Locknut	2
118	E6480-106-24	Front Sheet Metal Table	1
119	E6480-107	Flanged Bearing	3
120	E6480-108	Shaft Collar	2
121	E6480-109	M5 x 6mm Knurl Set Screw	8
122	E6480-110	Idler Pivot - Right	1
123	E6480-111	Pivot Linkage - Right	1
124	E6480-112	Spring Mount for Brackets	2
125	E6480-113	Alignment Support	2
126	E6480-114-24	Removable Top Back	1
127	E6480-115	Right Clamp Bar Mount	1
128	E6480-116	Spring Support	2
129	E6480-117	Clamp Bar Spring	2
130	E6540-09	Spindle Clamp Bolt	12
131	E6700-02-C-01-C	Plastite Screw	4

Includes 2 batteries and 1 charger.

PART NUMBER	DESCRIPTION	QTY.
E1260-28-HD	Battery	2
E1260-58	Charger	1

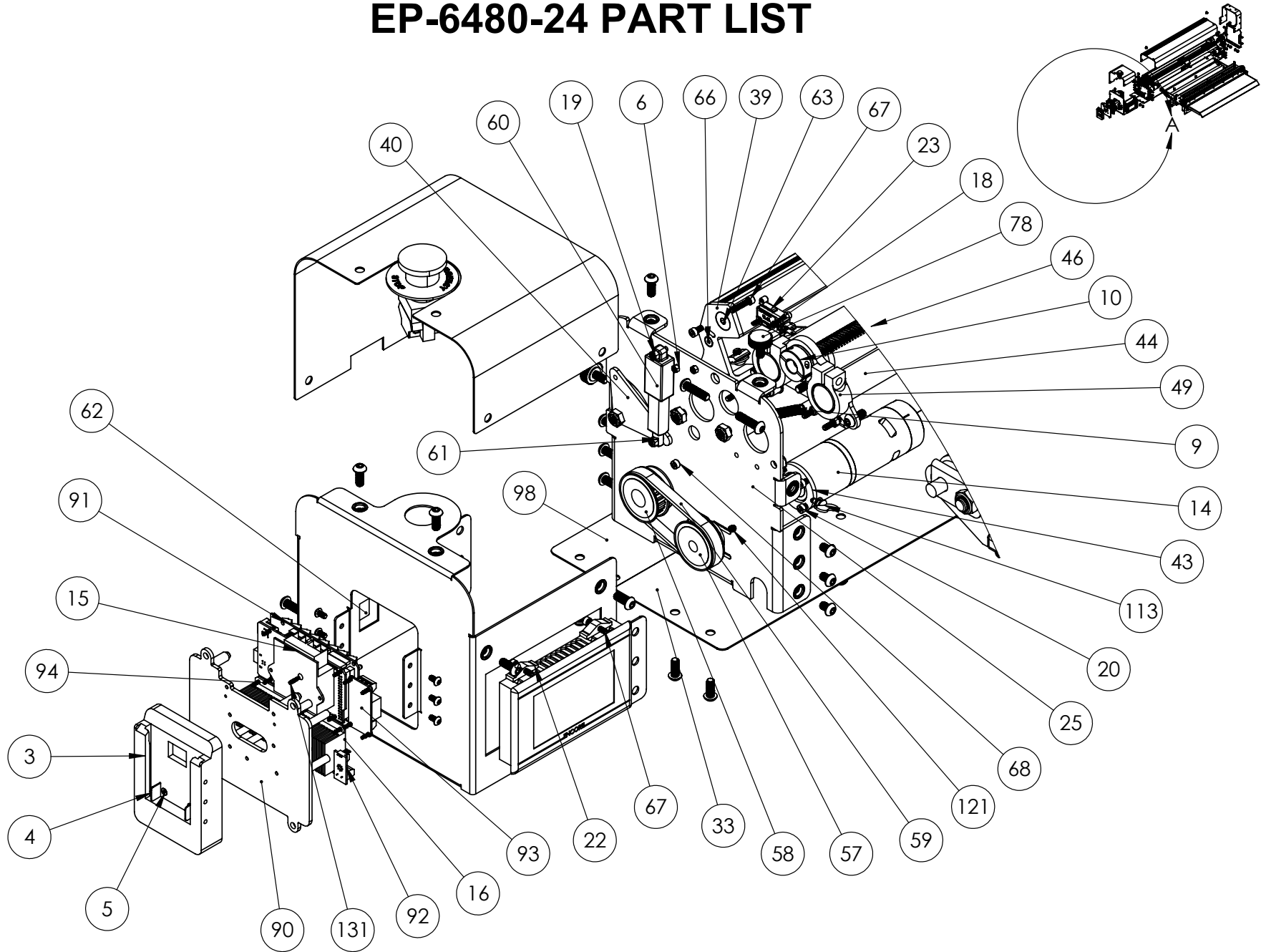


EP-6480-24 PART LIST



9/19/23 REV. A

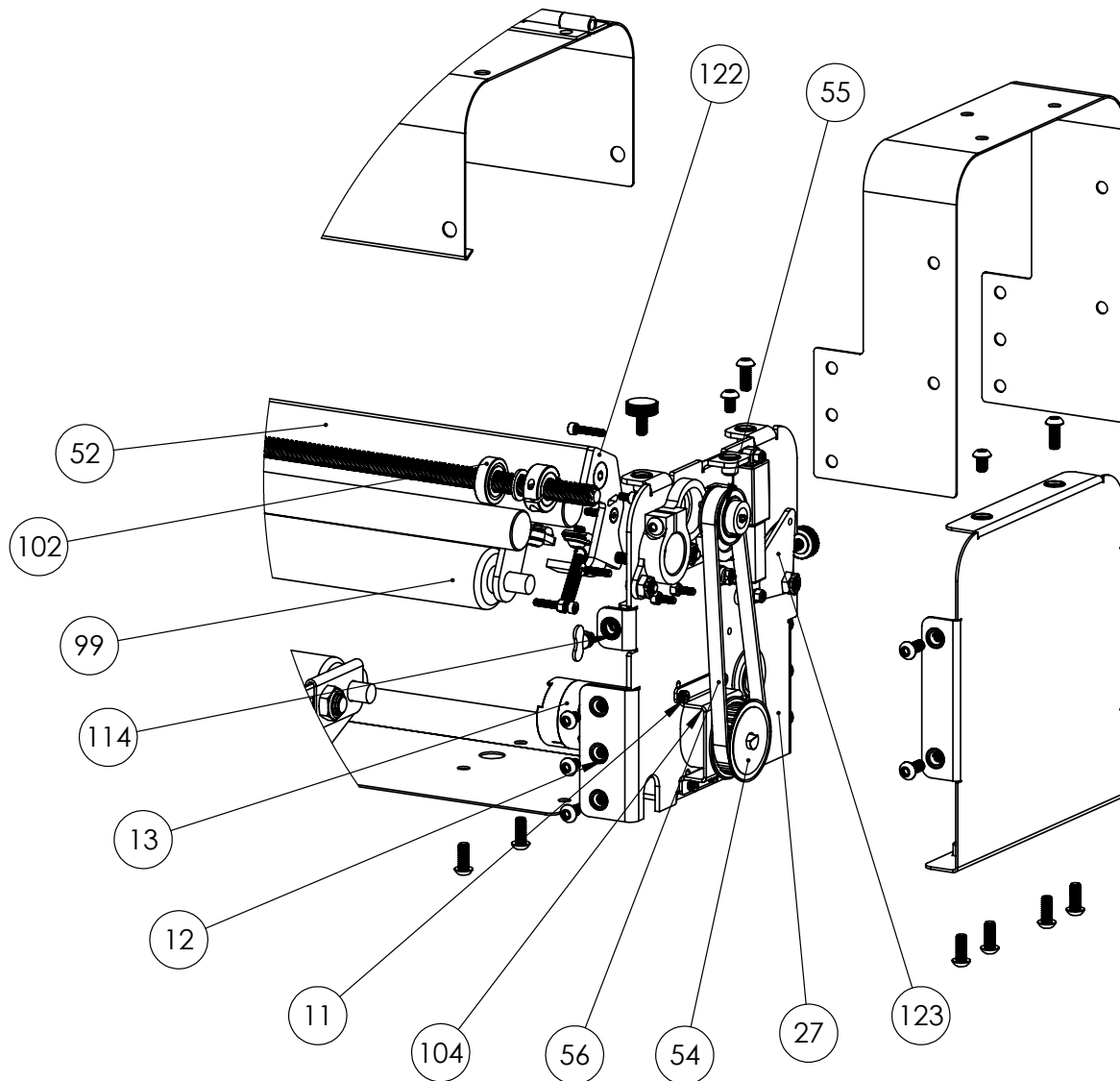
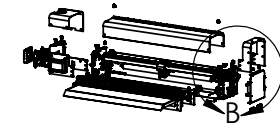
EP-6480-24 PART LIST



DETAIL A
SCALE 1 : 4

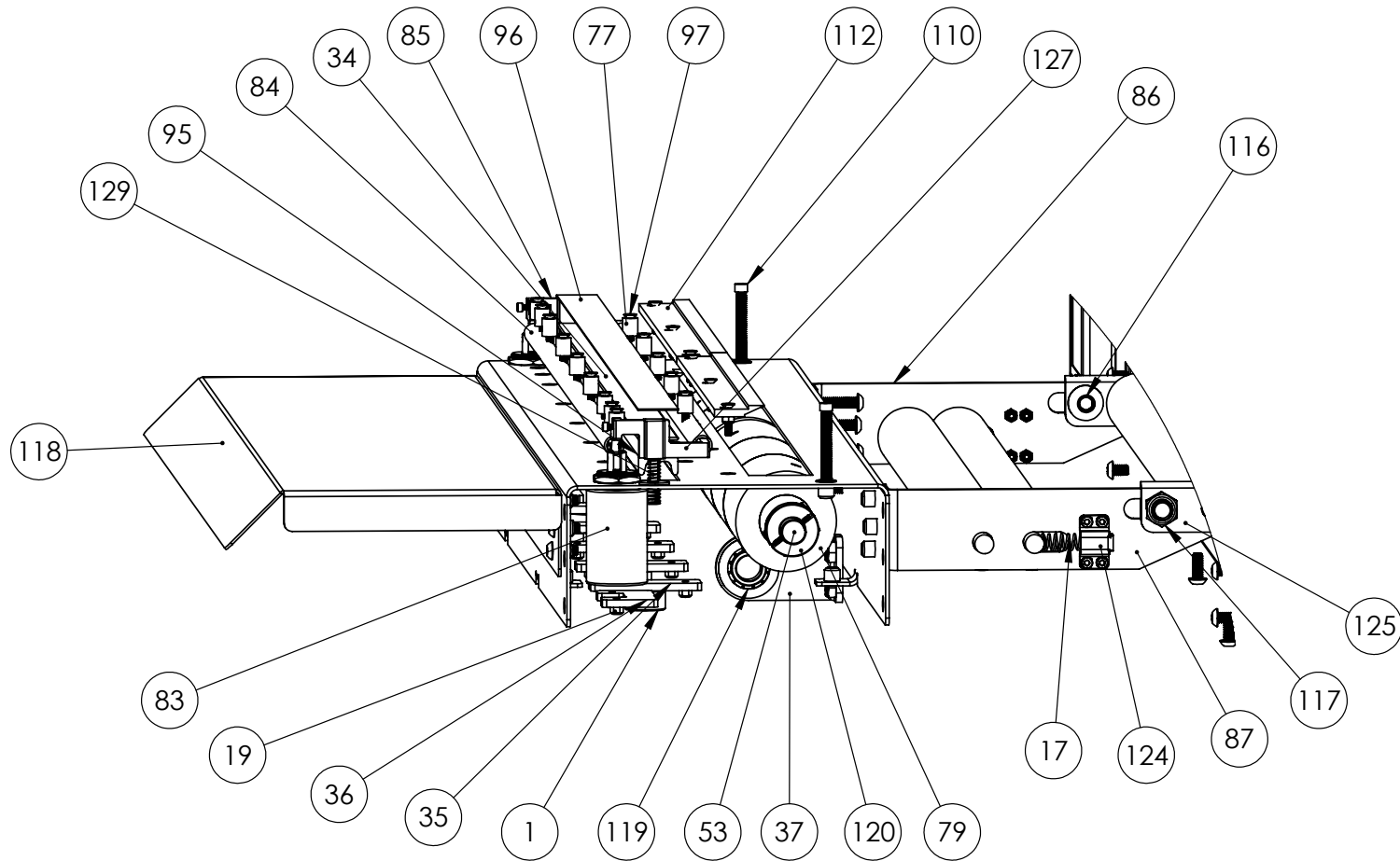
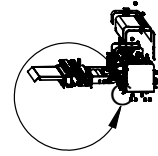
9/19/23 REV. A

EP-6480-24 PART LIST



DETAIL B
SCALE 1 : 4

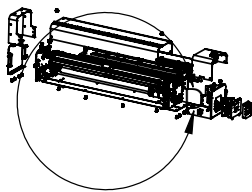
EP-6480-24 PART LIST



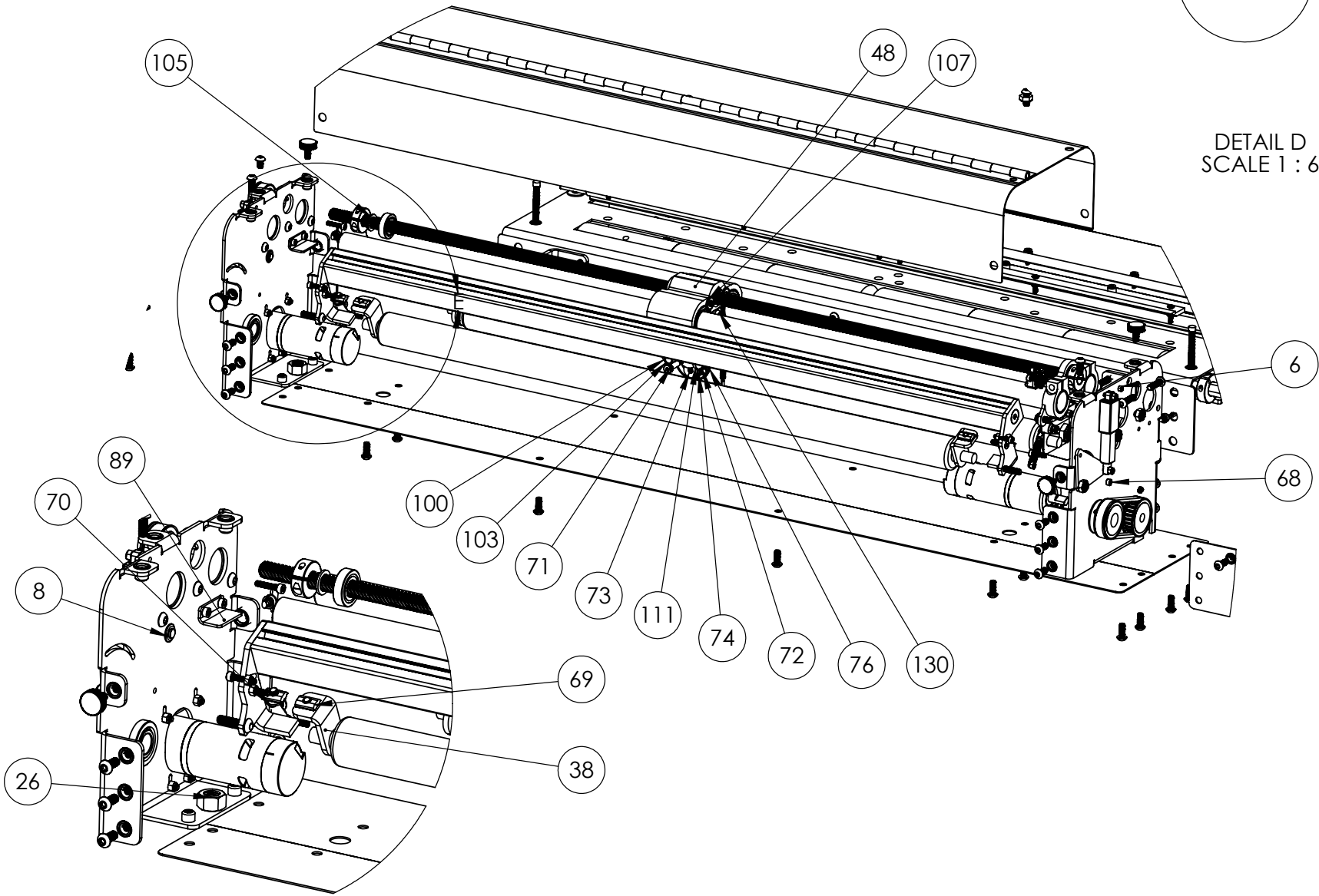
DETAIL C
SCALE 1 : 4

9/19/23 REV. A

EP-6480-24 PART LIST



DETAIL D
SCALE 1 : 6



DETAIL E
SCALE 1 : 4

9/19/23 REV. A



P (847) 735-8105 | F (847) 735-8297
sales@encorepack.com | www.encorepack.com



201 Park Avenue, Lake Villa, IL 60046
P.O. Box 595, Winnetka, IL 60093