

EP-5978

Battery Paper Dispenser

instructions

IT IS THE RESPONSIBILITY OF THE CUSTOMER TO ENSURE THAT
ALL OPERATORS AND SERVICE PERSONNEL HAVE FULLY READ
AND UNDERSTOOD THIS DOCUMENT

**READ ALL INSTRUCTIONS BEFORE OPERATING TOOLS.
FAILURE TO FOLLOW ANY OF THESE GUIDELINES COULD
RESULT IN SERIOUS OR FATAL INJURY**



P (847) 735-8105 | F (847) 735-8297
sales@encorepack.com | www.encorepack.com



201 Park Avenue, Lake Villa, IL 60046
P.O. Box 595, Winnetka, IL 60093



IMPORTANT



PLEASE READ PRIOR TO USAGE

To ensure operator safety, it is important that all personnel use proper safety and handling procedures. This safety booklet is designed to educate operators on the safe use of the EP-5978 Battery Paper Dispenser. All personnel must read and understand this booklet prior to using this product. Failure to follow any of the recommendations in this pamphlet can result in serious injury or death.

READ PRODUCT SAFETY LABELS

- **Read and understand all safety labels on the tool**
 - **Replace all damaged or missing labels**
- ALWAYS WEAR PERSONAL PROTECTIVE EQUIPMENT WHEN USING ANY STRAPPING TOOLS.
INSPECT THE TOOL DAILY AND REPLACE ALL WORN OR BROKEN PARTS. LUBRICATE ALL MOVING PARTS DAILY.

READ THE INSTRUCTIONS

Before operating this tool, read, and understand all safety, operation, and maintenance information provided in the manual which is packaged with the tool. If you do not have a manual or need extra copies, please contact your Sales Representative.



Terms & Conditions are found on our website: <https://www.encorepack.com/legal.php>

Please read our Terms & Conditions carefully prior to using or obtaining any materials, information products or services of **Encore Packaging LLC**, an Illinois limited liability company with a place of business at **201 Park Avenue, Lake Villa, IL 60046**.

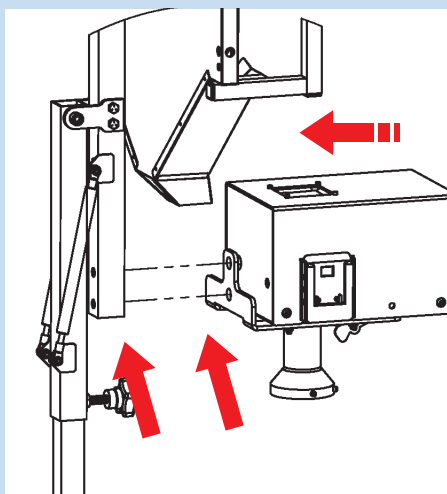
P (847) 735-8105 | F (847) 735-8297
sales@encorepack.com | www.encorepack.com



MADE IN THE USA
201 Park Avenue, Lake Villa, IL 60046
P.O. Box 595, Winnetka, IL 60093

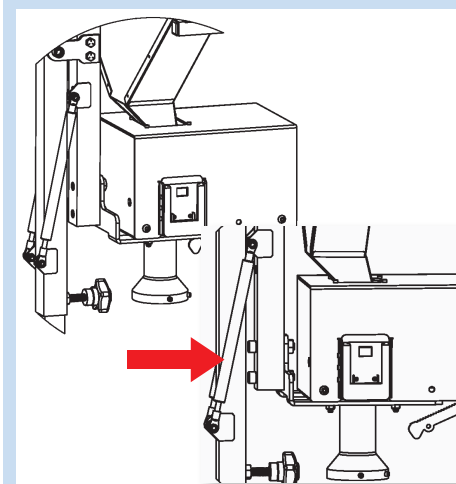
ASSEMBLY INSTRUCTIONS

Step 1



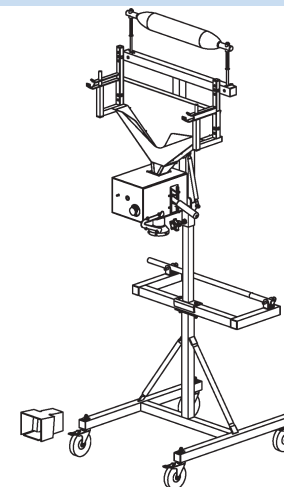
1. Carefully, hold up the feedbox and align it to the two bracket holes with the holes on the tube on the upper frame.

Step 2



2. With caution, hold the feed box up against the holes and screw in the 2, 1/2-13" x 2 1/2" bolts that are included. Secure tightly.

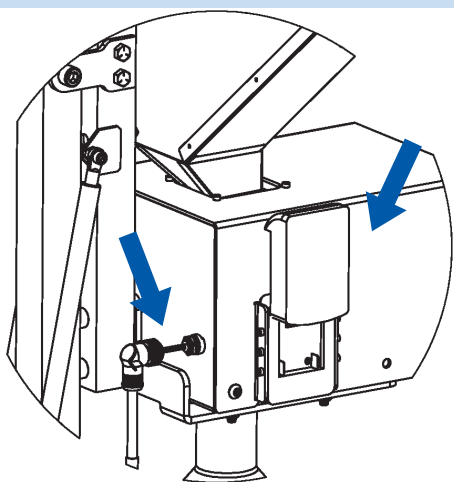
Step 3



3. EP-5978 is assembled and ready for loading and usage.

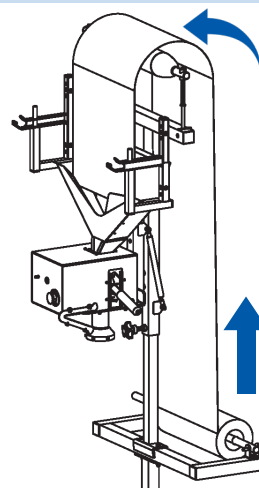
USAGE & LOADING INSTRUCTIONS

Step 1



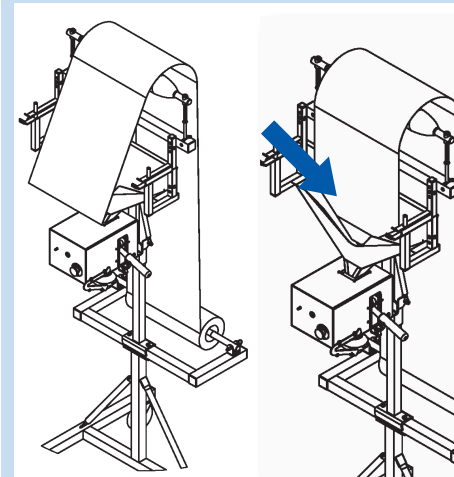
1. To begin loading and usage, plug in battery and foot pedal to the feed box.

Step 3



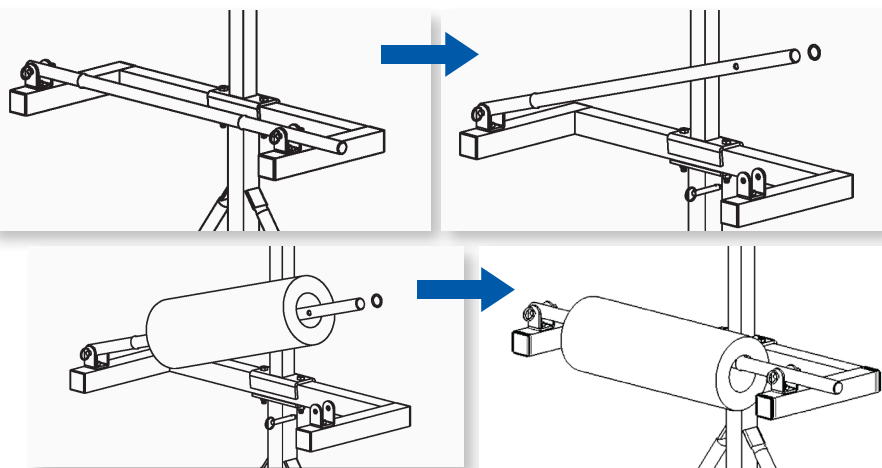
3. Take the end of the paper roll and pull it over the pvc tube.

Step 4



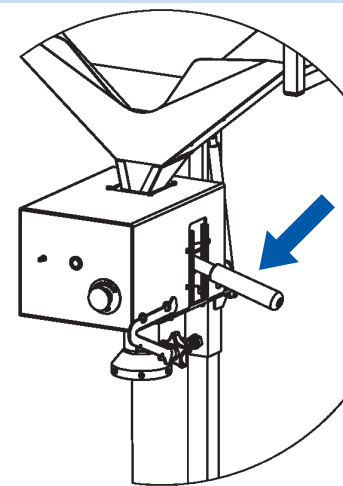
4. Once it's over the pvc tube, hand crumple the paper end, so it can be stuck through the crumpler chute.

Step 2



2. On the back bar, remove the quick release pin, and slide the o-ring off. Slide on a roll of kraft paper. Slide the o-ring back on and reinsert the quick release pin.

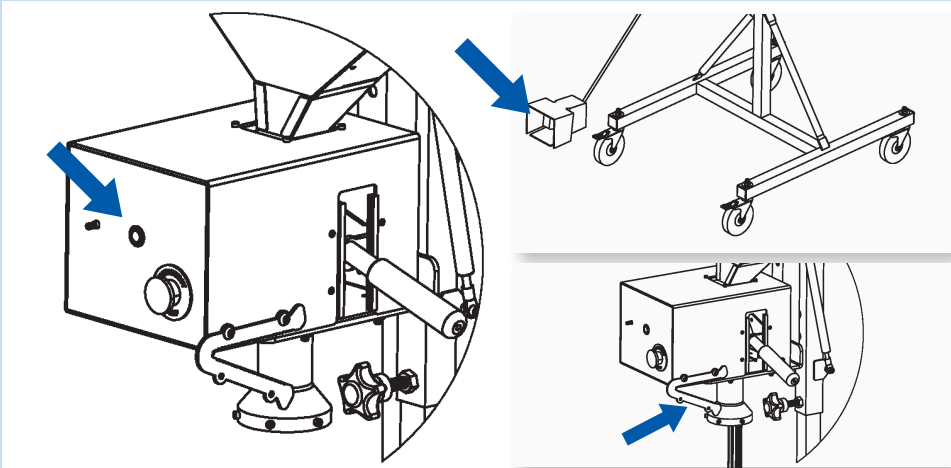
Step 5



5. Engage the rollers by pulling down on the side handle, allowing the paper to be engaged with the rollers.

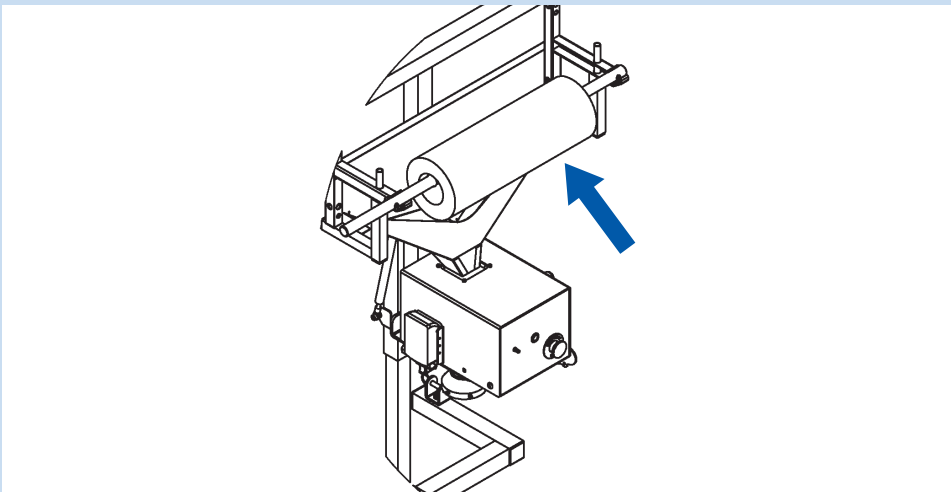
USAGE & LOADING INSTRUCTIONS

Step 6



6. Push and hold the front button on the feedbox, or step on the foot pedal to dispense the paper. When the paper is at the desired length, cut using the blade on the side of the crumplers by pulling the paper against it.

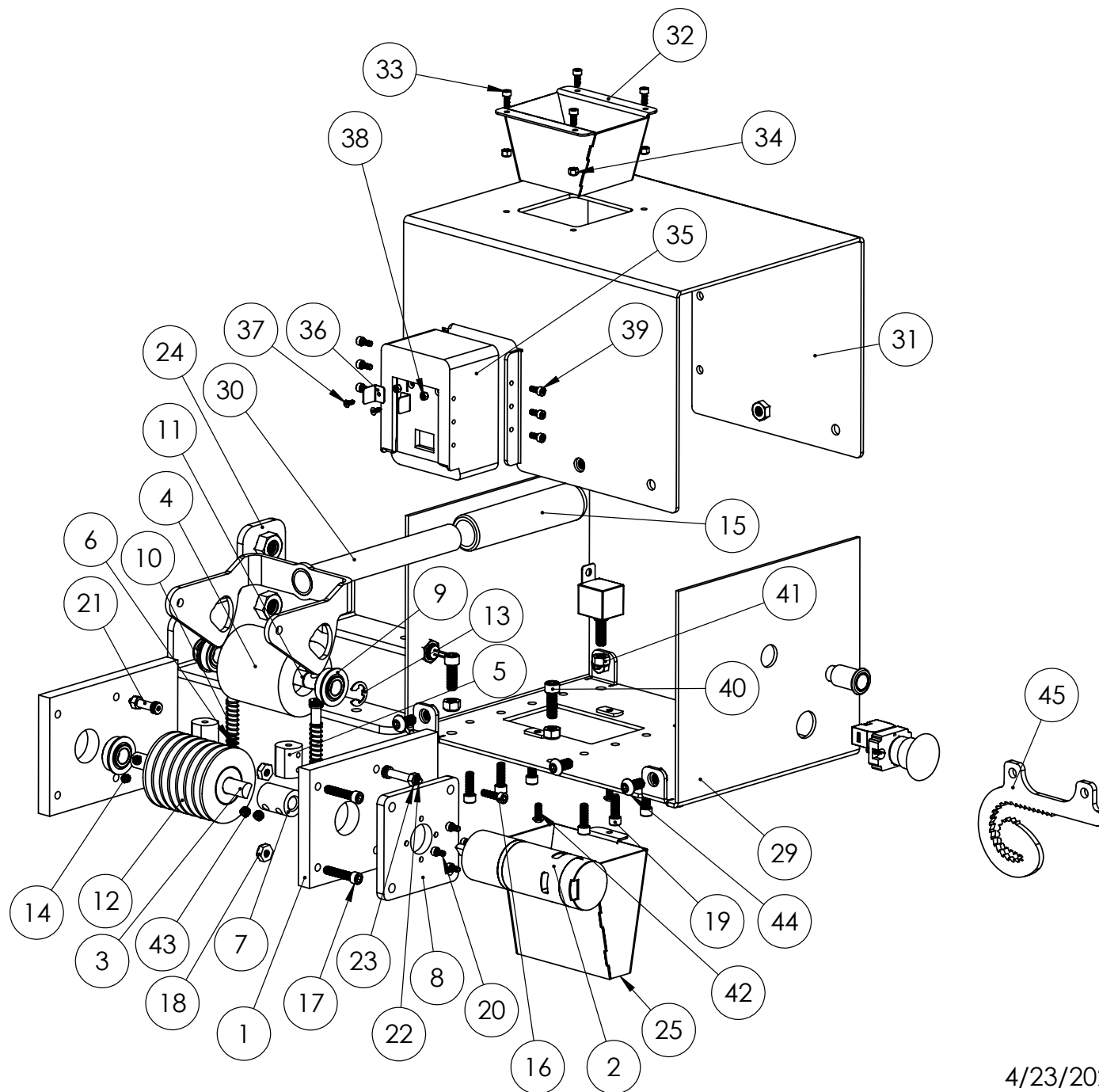
Step 7



7. For using a second roll, slide a kraft paper roll through the front tube of the crumpler attachment, and then place it on the front arms of the crumpler. Proceed to repeat steps 4-6 with the change of hand crumpling both rolls together before inserting into the crumpler.



EP-5978 PART LIST



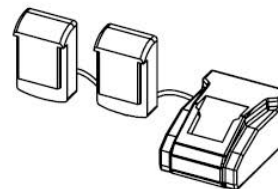
4/23/2021 REV. A

ITEM NO.	PART NUMBER	DESCRIPTION	QTY.
1	E5980-01-D-02	Mounting Plate	2
2	E5980-01-D-02	12V DC 49:1 Gearmotor	1
3	E5980-01-D-03	Drive Roller Shaft	1
4	E5980-01-D-05	Idler Spindle	1
5	E5980-01-D-07	Shoulder Bolt Guide	2
6	E1295-13	Shoulder Bolt	2
7	E5980-01-D-14	Drive Motor Coupler	1
8	E5980-01-D-15	Motor Adapter Plate	1
9	E6700-10	Flange Ball Bearing	3
10	E5980-01-D-12	Idler Spindle Spring	2
11	E5980-01-D-06	Idler Spindle Rod	1
12	E5980-01-D-04	Drive Roller	1
13	E3200-04-H-1	E-Clip	2
14	E5980-01-D-16	Drive Roller Set Screw	2
15	E1800-10-A	Handle Grip	1
16	E5980-01-D-08	M5 x 20mm	2
17	E5980-01-D-11	SHCS, 1/4"-20 x 1-1/4	3
18	E1225-06-B	1/4" Nylock Hex Nut	3
19	E5980-01-D-09	SHCS, 1/4"-20 X 3/4"	8
20	E5980-01-X	M4 x 8mm	4
21	E5978-101	Pivot Bolt	1
22	E5978-102	Motor Side Pivot Bolt	1
23	E5978-103	Nylock Nut for Pivot Bolt	2

ITEM NO.	PART NUMBER	DESCRIPTION	QTY.
24	E5978-04	Feedbox Bracket Weldment	1
25	E5980-01-F	Bottom Chute	1
26	E5978-30	E5978 Wire Harness	1
27	E5978-32	Foot Pedal Harness	1
28	E5978-31	Foot Pedal Receptical	1
29	E5978-01	Feedbox Base Weldment	1
30	E5978-02	Easy Load Gear Weldment	1
31	E5978-03	Feedbox Cover Weldment	1
32	E5980-01-E	Top Chute	1
33	E5980-107	M4x10mm	4
34	E5980-01-U	M4 Nylock Nut	4
35	E1260-28-C-01	Circuit Box	1
36	E1260-28-C-03	Battery Contact	2
37	E1260-28-C-06	FHCS, M3 X 0.5 -8 mm	2
38	E1260-28-C-07	M3 x 0.5 Lock Nut	2
39	E5980-01-Z	SHCS, M4 x 10mm	6
40	E5980-01-S	SHCS, 5/16"-18 X 7/8"	4
41	E1900-07	Hex Nut	4
42	E5980-01-W	BHCS, #10-24 X 1/2"	2
43	E5980-112	5/16"-18 UNC Set Screw	2
44	E5980-01-T	BHCS, 5/16"-18 X 5/8"	6
45	E5978-75	Cutter Blade	1

INCLUDES 2 BATTERIES AND 1 CHARGER

PART NUMBER	DESCRIPTION	QTY.
E1260-28-HD	Battery	2
E1260-58	Battery Charger	1



4/23/2021 REV. A



P (847) 735-8105 | F (847) 735-8297
sales@encorepack.com | www.encorepack.com



201 Park Avenue, Lake Villa, IL 60046
P.O. Box 595, Winnetka, IL 60093