

EP-5959

Center Pull Paper Dispenser with Bearings

usage instructions

IT IS THE RESPONSIBILITY OF THE CUSTOMER TO ENSURE THAT
ALL OPERATORS AND SERVICE PERSONNEL HAVE FULLY READ
AND UNDERSTOOD THIS DOCUMENT

**READ ALL INSTRUCTIONS BEFORE OPERATING TOOLS.
FAILURE TO FOLLOW ANY OF THESE GUIDELINES COULD
RESULT IN SERIOUS OR FATAL INJURY**



P (847) 735-8105 | F (847) 735-8297
sales@encorepack.com | www.encorepack.com



201 Park Avenue, Lake Villa, IL 60046
P.O. Box 595, Winnetka, IL 60093



IMPORTANT



PLEASE READ PRIOR TO USAGE

To ensure operator safety, it is important that all personnel use proper safety and handling procedures. This safety booklet is designed to educate operators on the safe use of the EP-5959 Center Pull Paper Dispenser with Bearings. All personnel must read and understand this booklet prior to using this product. Failure to follow any of the recommendations in this pamphlet can result in serious injury or death.

READ PRODUCT SAFETY LABELS

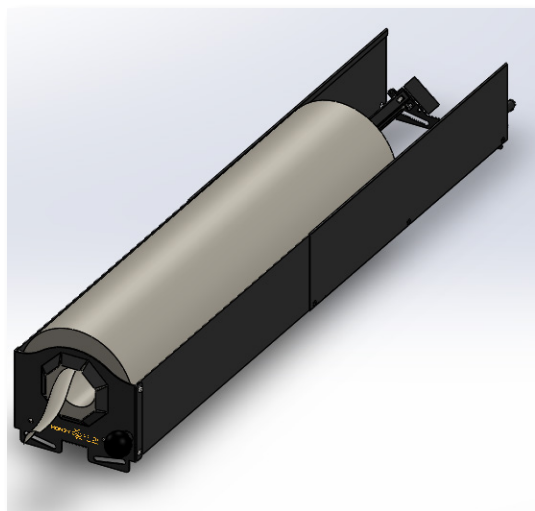
- Read and understand all safety labels on the tool
- Replace all damaged or missing labels

INSPECT THE TOOL DAILY AND REPLACE ALL WORN OR BROKEN PARTS. LUBRICATE ALL MOVING PARTS DAILY.

PRIOR TO USING UNIT, ALWAYS MAKE SURE THE UNIT IS TAUT AND SECURE TO TABLE. DO NOT USE IF UNIT IS LOOSE OR UNFASTENED TO TABLE.

READ THE INSTRUCTIONS

Before operating this tool, read, and understand all safety, operation, and maintenance information provided in the manual which is packaged with the tool. If you do not have a manual or need extra copies, please contact your Sales Representative.



Terms & Conditions are found on our website: <https://www.encorepack.com/legal.php>

Please read our Terms & Conditions carefully prior to using or obtaining any materials, information products or services of **Encore Packaging LLC**, an Illinois limited liability company with a place of business at **201 Park Avenue, Lake Villa, IL 60046**.

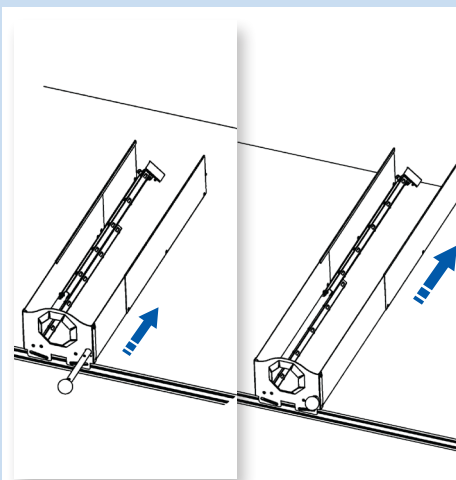
P (847) 735-8105 | F (847) 735-8297
sales@encorepack.com | www.encorepack.com



MADE IN THE USA
201 Park Avenue, Lake Villa, IL 60046
P.O. Box 595, Winnetka, IL 60093

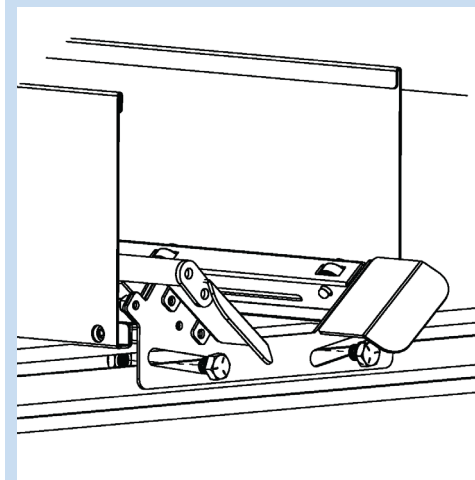
USAGE INSTRUCTIONS

Step 1



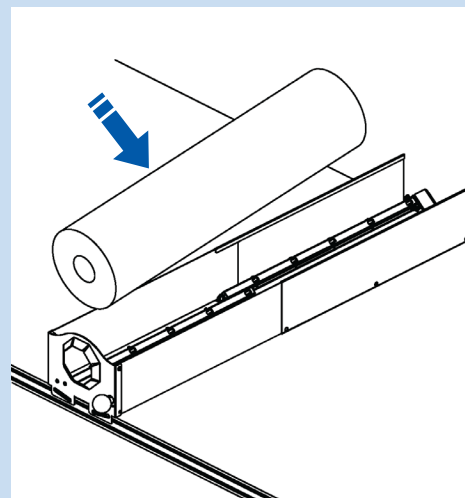
1. Place dispenser on shelf and extend to the depth of the shelf using the ball knob (#22).

Step 2

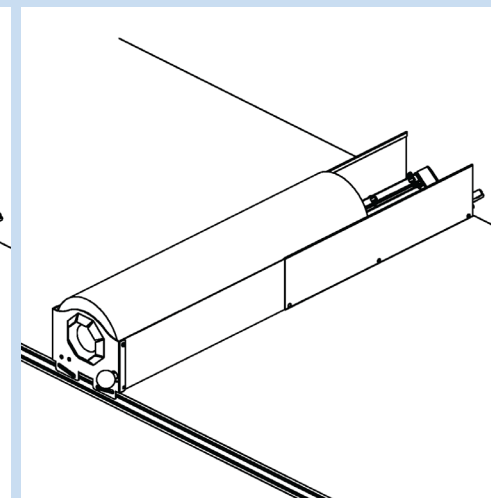


2. Align channel with a 3/8" locknut and slot on the back plate (#2). Use a 3/8" screw to secure the dispenser to the shelf using the shelf channel.

Step 3

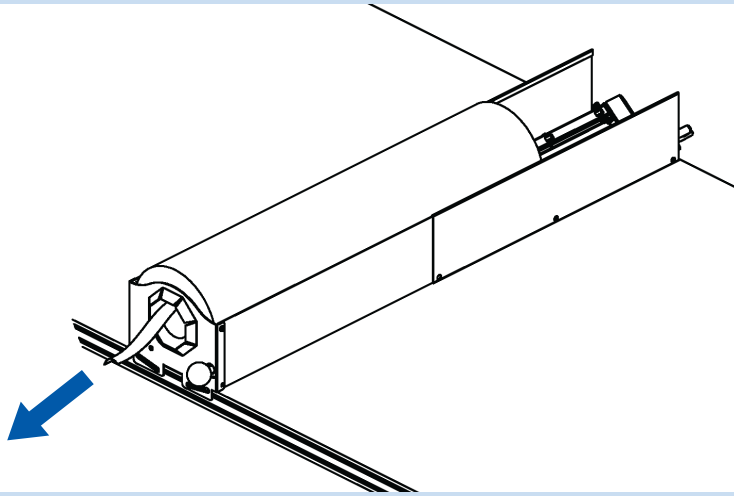


3. Once in place, put a roll in the dispenser.



USAGE INSTRUCTIONS

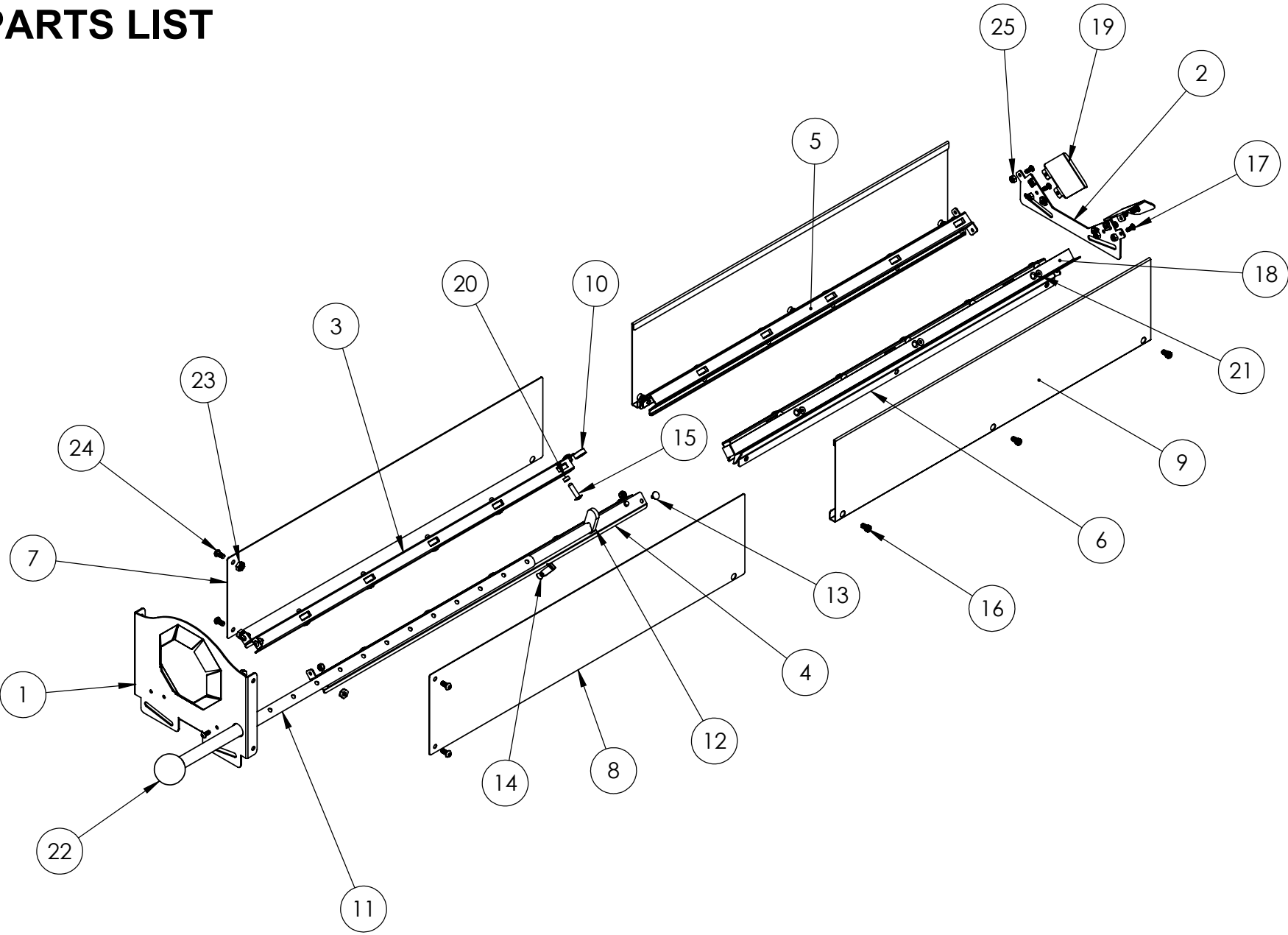
Step 4



4. Pull paper from chute as needed.

ITEM NO.	PART NUMBER	DESCRIPTION	QTY.
1	E5959-01	Front Plate	1
2	E5959-02	Back Plate Weldment	1
3	E5959-03-L	Inside Rail - Left	1
4	E5959-03-R	Inside Rail - Right	1
5	E5959-04-L	Outside Rail - Left	1
6	E5959-04-R	Outside Rail - Right	1
7	E5959-05-L	Front Wal - Left	1
8	E5959-05-R	Front Wall - Right	1
9	E5959-06	Back Wall	2
10	E5959-07	Ball Bearing	20
11	E5959-08	Outer Rod	1
12	E5959-09	Inner Rod	1
13	E5959-11	Carriage Bolt	2
14	E5959-12	Button Pin	1
15	E5959-13	Rivet	20
16	E5959-15	SHCS, 1/4-20 X 3/8"	6
17	E5959-16	BHCS, 10-24 X 1/2"	12
18	E5959-17	Rod Guide	1
19	E5959-18	Back Plate Flange	2
20	E5959-19	Spacer	20
21	E5959-20	FHCS, 10-24 x 3/8"	3
22	E820-08	.5-20 Ball Knob	1
23	E1225-06-B	1/4" Nylock Hex Nut	4
24	E1620-33	Socket Cap Screw	4
25	E3550-02-F	10-24 Nylock Nut	10

EP-5959
PARTS LIST



6/13/23 REV. B



P (847) 735-8105 | F (847) 735-8297
sales@encorepack.com | www.encorepack.com



201 Park Avenue, Lake Villa, IL 60046
P.O. Box 595, Winnetka, IL 60093