

## EP-5956-24

### *Paper Crumpler Table Mount - 24"*

#### *usage instructions*

IT IS THE RESPONSIBILITY OF THE CUSTOMER TO ENSURE THAT  
ALL OPERATORS AND SERVICE PERSONNEL HAVE FULLY READ  
AND UNDERSTOOD THIS DOCUMENT

**READ ALL INSTRUCTIONS BEFORE OPERATING TOOLS.  
FAILURE TO FOLLOW ANY OF THESE GUIDELINES COULD  
RESULT IN SERIOUS OR FATAL INJURY**



P (847) 735-8105 | F (847) 735-8297  
sales@encorepack.com | www.encorepack.com



201 Park Avenue, Lake Villa, IL 60046  
P.O. Box 595, Winnetka, IL 60093



# IMPORTANT



## PLEASE READ PRIOR TO USAGE

To ensure operator safety, it is important that all personnel use proper safety and handling procedures. This safety booklet is designed to educate operators on the safe use of the EP-5956 Paper Crumpler Table Mount. All personnel must read and understand this booklet prior to using this product. Failure to follow any of the recommendations in this pamphlet can result in serious injury or death.

## READ PRODUCT SAFETY LABELS

- Read and understand all safety labels on the tool
- Replace all damaged or missing labels

INSPECT THE TOOL DAILY AND REPLACE ALL WORN OR BROKEN PARTS. LUBRICATE ALL MOVING PARTS DAILY.

PRIOR TO USING UNIT, ALWAYS MAKE SURE THE UNIT IS TAUT AND SECURE TO TABLE. DO NOT USE IF UNIT IS LOOSE OR UNFASTENED TO TABLE.

## READ THE INSTRUCTIONS

Before operating this tool, read, and understand all safety, operation, and maintenance information provided in the manual which is packaged with the tool. If you do not have a manual or need extra copies, please contact your Sales Representative.



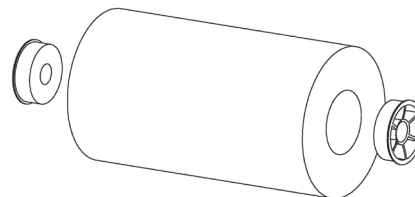
Terms & Conditions are found on our website: <https://www.encorepack.com/legal.php>

Please read our Terms & Conditions carefully prior to using or obtaining any materials, information products or services of **Encore Packaging LLC**, an Illinois limited liability company with a place of business at **201 Park Avenue, Lake Villa, IL 60046**.

P (847) 735-8105 | F (847) 735-8297  201 Park Avenue, Lake Villa, IL 60046  
sales@encorepack.com | www.encorepack.com P.O. Box 595, Winnetka, IL 60093

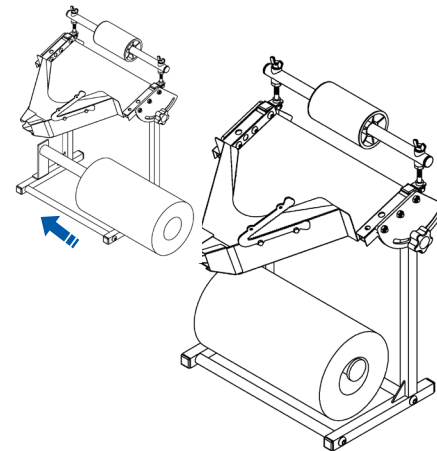
## USAGE INSTRUCTIONS

### Step 1



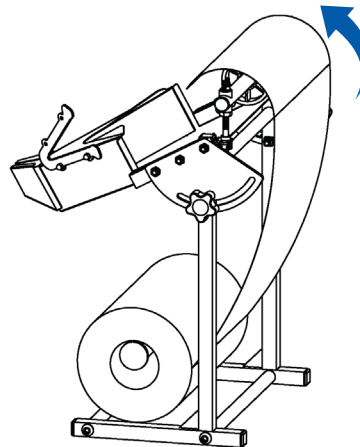
1. Remove plastic inserts from the kraft paper roll.

### Step 2



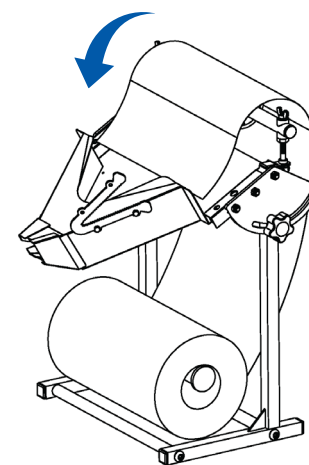
2. Slide paper roll onto the roll arm.

### Step 3



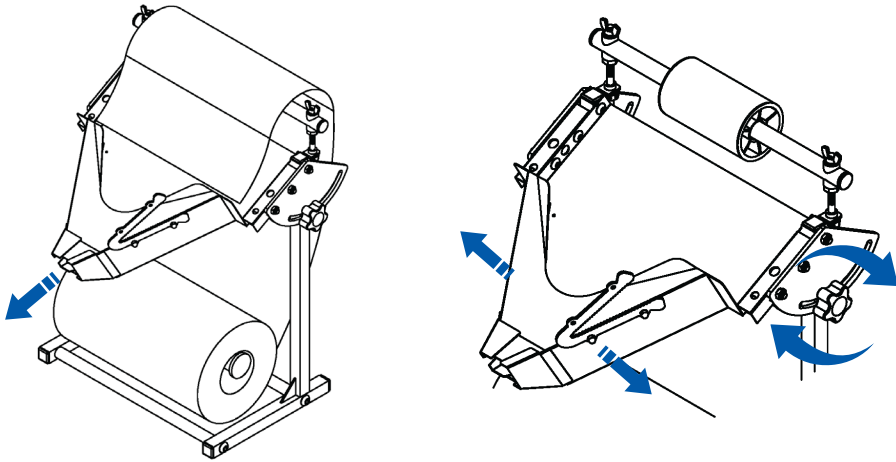
3. Pull paper upward and over the PVC roller.

### Step 4



4. Feed paper towards the chute.

### Step 5

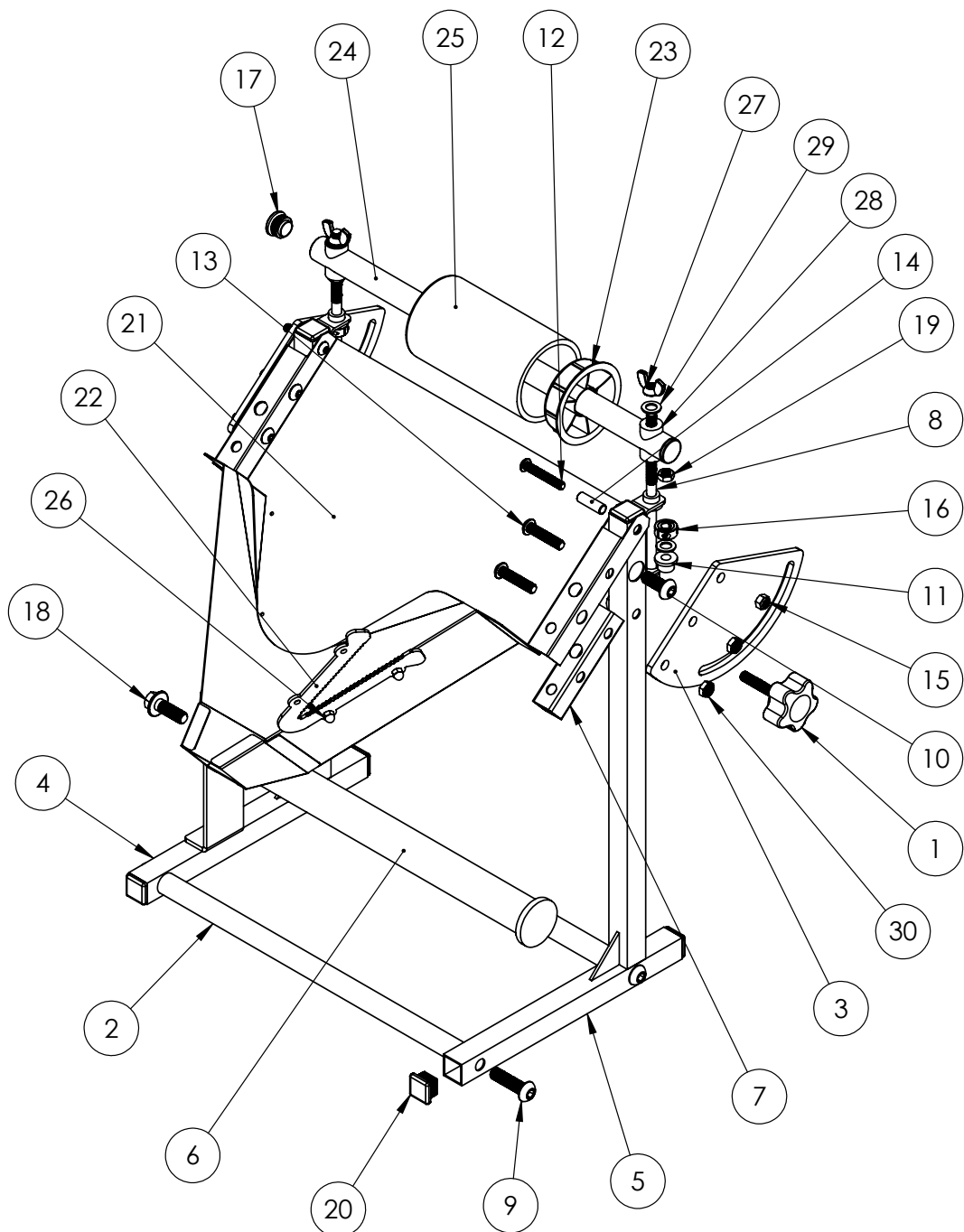


5. Feed the paper through the chute and use the cutter to cut paper to desired length. Adjust the positioning of the dispenser as needed by unscrewing the pivot plate knob enough to swing the chute into the position needed then secure in place by screwing in the knob.

*This page have been intentionally left blank*

# EP-5956-24 PART LIST

ITEM NO.	PART NUMBER	DESCRIPTION	QTY.
1	E5956-01	Pivot Plate Knob Handle	2
2	E5956-02-24	Joining Tube	3
3	E5956-03	Pivot Plate	2
4	E5956-04-L	Left Support Weldment	1
5	E5956-04-R	Right Support Weldment	1
6	E5956-05-24	Roll Arm	1
7	E5956-06	Crumpler Support Tube	2
8	E5956-07	HHS, 3/8-16 x 7-1/2	2
9	E5956-08	BHCS, M12 x 45mm	4
10	E5956-09	BHCS, M12 x 30mm	2
11	E5956-10	Bushing	4
12	E5956-11	BHCS, 5/16-18 x 2	2
13	E5956-12	BHCS, 3/8-16 x 1-1/2"	4
14	E1275-06-C	Sleeve	2
15	E1900-07	Hex Nut	2
16	E3075-08	Shaft Collar	2
17	E3080-10-A	1" Tube Plug	2
18	E3500-11	M12 Flange HHS x 35mm	1
19	E3550-02-J	3/8"-16 Jam Nut	2
20	E5920-09	Square Tube Plug	6
21	E5950-20-24	Crumpler Frame	1
22	E5950-21	Cutter Blade	1
23	E5955-04	3" Plastic Cap Insert	2
24	E5955-05	29" Tube	1
25	E5955-07	PVC Pipe	1
26	E5955-10	Cap Nut	2
27	E5955-24	Nylon Wing Nut	2
28	E5955-28	Saddle Cap	4
29	E5960-04	Washer	4
30	E5960-08	Nylock Hex Nut	4



9/25/23 REV. A



P (847) 735-8105 | F (847) 735-8297  
sales@encorepack.com | www.encorepack.com



201 Park Avenue, Lake Villa, IL 60046  
P.O. Box 595, Winnetka, IL 60093