



Electric Countertop Griddles

Base Models: _____

#177EG36N, #177EG48N, #177EG60C, #177EG60E

Table of Contents

Pre-Installation Checklist.....	3
Installation Checklist.....	4
Post-Installation Checklist.....	5
Schematics	6



4010483

Conforms to UL STD. 197
Conforms to NSF/ANSI STD. 4



4010483

Installation must be performed by a licensed and insured food service technician or electrician.

Pre-Installation Checklist

It is required to check each box once task has been completed.

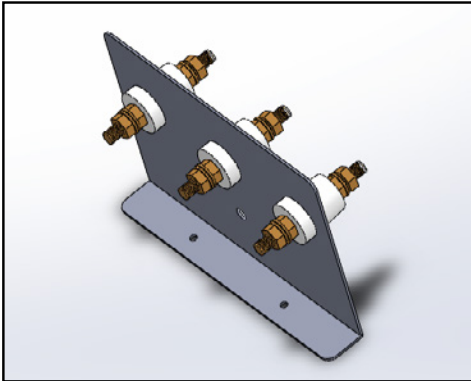
- ☐ Inspect for shipping damage. If damage is found, reach out to customer service.
- ☐ Confirm all parts have been delivered. If parts are missing, confirm tracking, then reach out to customer service.
- ☐ Review user manual before continuing.
- ☐ If combustible surface clearance is required by the manual:
 - ☐ Confirm surrounding surface types (combustible vs. non-combustible).
 - ☐ Ensure necessary clearance based on surface type.
- ☐ If ventilation is required:
 - ☐ Check clearances.
 - ☐ Confirm ventilation requirements.
- ☐ Verify site conditions:
 - ☐ Ensure installation surface is level.
 - ☐ Ensure structural support.
 - ☐ Install indoors (if required in the manual).
- ☐ Confirm all required tools and parts are available.
- ☐ Ensure permits are obtained and on-site.
- ☐ Verify shutdown procedures for existing systems.
- ☐ Photograph pre-installation condition.
- ☐ Install any legs or feet provided with the unit (unless manual states otherwise).
- ☐ Verify power requirements match data tag:
 - ☐ Confirm voltage.
 - ☐ Confirm phase.
- ☐ Verify wire gauge requirements.
- ☐ Ensure breaker is properly sized.
- ☐ Refer to local regulations for disconnect requirements for equipment.

Installation must be performed by a licensed and insured food service technician or electrician.

Installation Checklist

It is required to check each box once task has been completed.
Please reference the load charts and wiring diagrams on pages 6-7.

- ☐ Disconnect and lockout / tagout power source (we highly recommend both at the local disconnect and the building level).
- ☐ Confirm power is off using a multimeter.
- ☐ Mount equipment according to manufacturer specifications found in the user manual.
- ☐ Remove the terminal panel inside the junction box and verify connections internally match the external connections for the phase connection being installed.
- ☐ Connect grounding conductors if present.
- ☐ Make connections per wiring diagrams.
- ☐ Secure all connections and terminals.
- ☐ Label all circuits and connections.
- ☐ Use restraint device for equipment on casters.
- ☐ We highly recommend having 2 feet of excess wire to allow for future servicing.
- ☐ All wire must be protected in a flexible or metal-coated conduit.
- ☐ Refer to local codes for specific requirements.

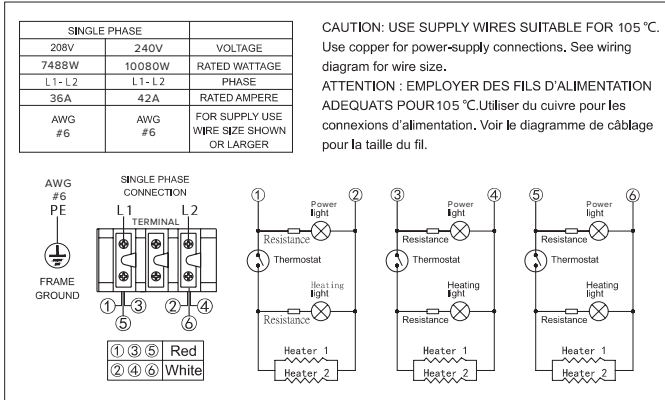


Installation must be performed by a licensed and insured food service technician or electrician.

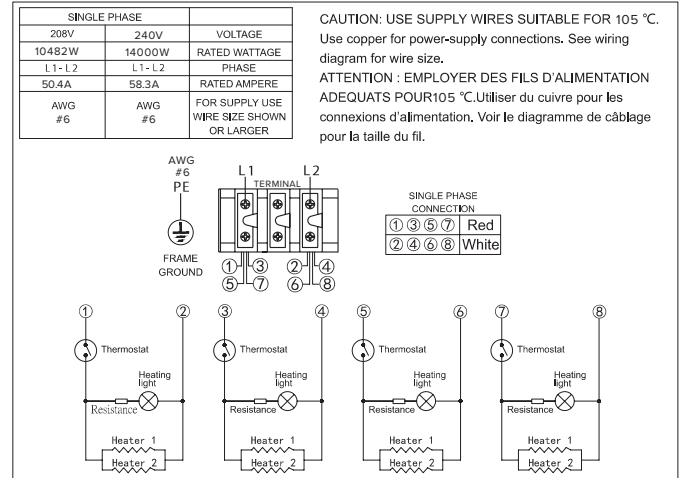
Post-Installation Checklist

It is required to check each box once task has been completed.

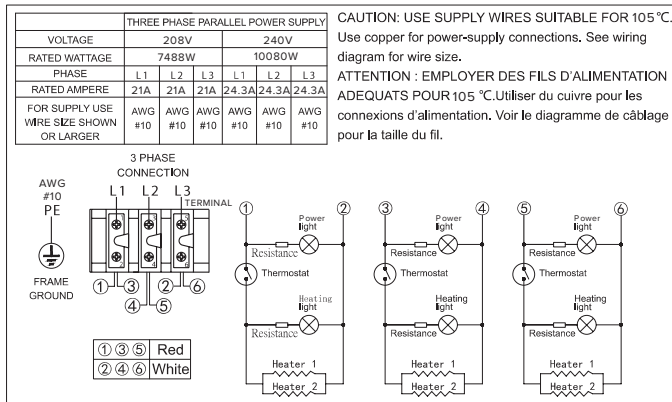
- ☐ Verify all connections are tight and secure.
- ☐ Check for proper grounding.
- ☐ Complete system startup per manufacturer user manual.
- ☐ Verify operation through complete cycle.
- ☐ Stress test: Using an amp clamp, verify proper amp draw on each leg:
 - ☐ Attach amp clamp.
 - ☐ Compare amp draw to data tag.
 - ☐ If amp draw does not properly align with the data plate, verify all previous steps.



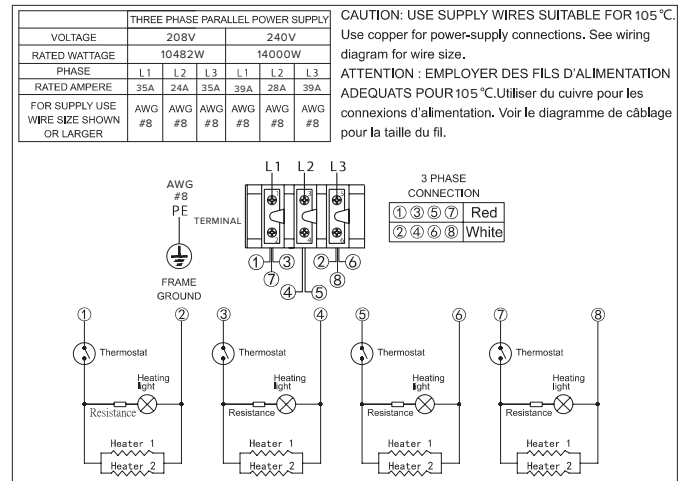
177EG36N 208-240V, 1PH



177EG48N 208-240V, 1PH



177EG36N 208-240V, 3PH

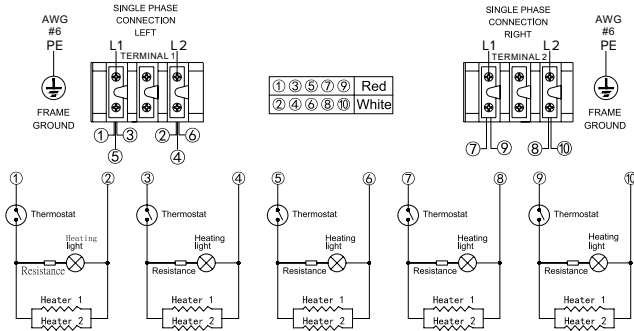


177EG48N 208-240V, 3PH

SINGLE PHASE		
208V(LEFT)	208V(RIGHT)	VOLTAGE
10.5KW	7KW	RATED WATTAGE
L1 - L2	L1 - L2	PHASE
50.5A	33.7A	RATED AMPERE
AWG #6	AWG #8	FOR SUPPLY USE WIRE SIZE SHOWN OR LARGER

CAUTION: USE SUPPLY WIRES SUITABLE FOR 90°C. Use copper for power-supply connections. See wiring diagram for wire size.

ATTENTION : EMPLOYER DES FILS D'ALIMENTATION ADEQUATS POUR 90°C. Utiliser du cuivre pour les connexions d'alimentation. Voir le diagramme de câblage pour la taille du fil.

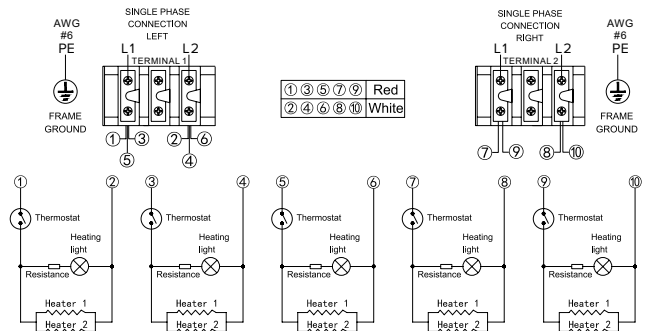


177EG60C 208V, 1PH

SINGLE PHASE		
240V(LEFT)	240V(RIGHT)	VOLTAGE
10.5KW	7KW	RATED WATTAGE
L1 - L2	L1 - L2	PHASE
43.5A	29.2A	RATED AMPERE
AWG #6	AWG #8	FOR SUPPLY USE WIRE SIZE SHOWN OR LARGER

CAUTION: USE SUPPLY WIRES SUITABLE FOR 90°C. Use copper for power-supply connections. See wiring diagram for wire size.

ATTENTION : EMPLOYER DES FILS D'ALIMENTATION ADEQUATS POUR 90°C. Utiliser du cuivre pour les connexions d'alimentation. Voir le diagramme de câblage pour la taille du fil.

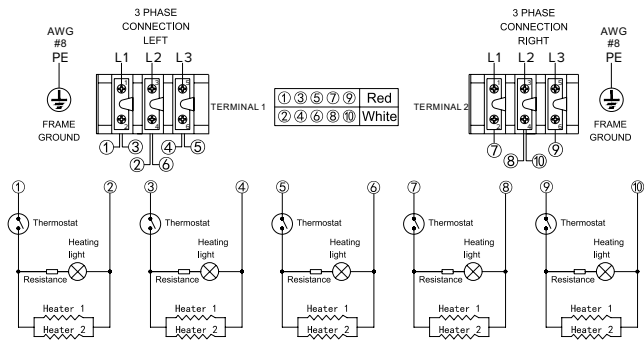


177EG60E 240V, 1PH

THREE PHASE PARALLEL POWER SUPPLY		
VOLTAGE	208V(LEFT)	208V(RIGHT)
RATED WATTAGE	10.5KW	7KW
PHASE	L1 L2 L3	L1 L2 L3
RATED AMPERE	29.5A 29.5A 29.5A	20A 29.5A 20A
FOR SUPPLY USE WIRE SIZE SHOWN OR LARGER	AWG #8 AWG #8 AWG #8	AWG #10 AWG #8 AWG #10

CAUTION: USE SUPPLY WIRES SUITABLE FOR 90°C. Use copper for power-supply connections. See wiring diagram for wire size.

ATTENTION : EMPLOYER DES FILS D'ALIMENTATION ADEQUATS POUR 90°C. Utiliser du cuivre pour les connexions d'alimentation. Voir le diagramme de câblage pour la taille du fil.

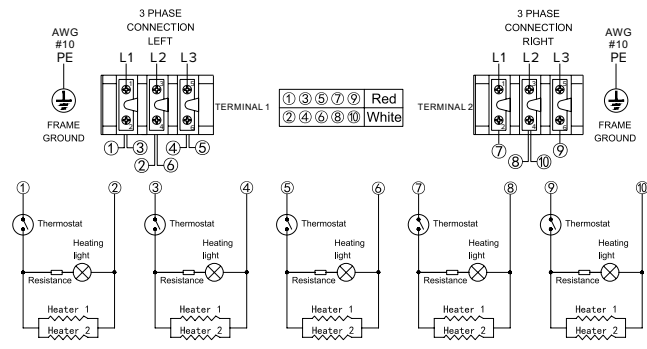


177EG60C 208V, 3PH

THREE PHASE PARALLEL POWER SUPPLY		
VOLTAGE	240V(LEFT)	240V(RIGHT)
RATED WATTAGE	10.5KW	7KW
PHASE	L1 L2 L3	L1 L2 L3
RATED AMPERE	25A 25A 25A	17A 25A 17A
FOR SUPPLY USE WIRE SIZE SHOWN OR LARGER	AWG #10 AWG #10 AWG #10	AWG #12 AWG #10 AWG #12

CAUTION: USE SUPPLY WIRES SUITABLE FOR 90°C. Use copper for power-supply connections. See wiring diagram for wire size.

ATTENTION : EMPLOYER DES FILS D'ALIMENTATION ADEQUATS POUR 90°C. Utiliser du cuivre pour les connexions d'alimentation. Voir le diagramme de câblage pour la taille du fil.



177EG60E 240V, 3PH