

GOODWAY®

MODEL DV-RV2/RV3

Electric Vacuum Cleaner

With Roll-Vac Attachments

OPERATING AND MAINTENANCE INSTRUCTIONS



Goodway Technologies Corporation

420 West Avenue

Stamford, CT 06902-6384

(203)359-4708

Sales: 1-800-333-7467

Customer Service: 1-800-370-2855

Fax: 1-800-359-9625

E-mail: goodway@goodway.com

Internet: www.goodway.com

©Copyright 2013 Goodway Technologies Corp., Stamford, CT, U.S.A.

Effective Date: September, 2013

Goodway® is a registered trademark of Crossford International

Goodway reserves the right to improve products - contact the factory for the latest configuration and uses

INTRODUCTION

Thank you for purchasing this Goodway vacuum. We appreciate your business and look forward to serving you in the future. As with all Goodway products, you can be assured that the finest quality components and workmanship have gone into this machine.

Please take a few minutes to read the following Operating and Maintenance Instructions. By carefully following the instructions, you will obtain years of trouble free service from this product. Please pay particular attention to the safety instructions and exercise caution when using this machine.

We are here to serve you!
For Sales call
1-800-333-7467
For Service call
1-800-370-2855
Goodway Technologies Corp.

IMPORTANT SAFETY INSTRUCTIONS

IMPORTANT – ALL MODELS

To prevent operator injury and damage to the equipment, please read and observe the following basic safety precautions:

1. Read all instructions before using.
2. If vacuum does not operate properly or has been damaged, return it to the factory for service.
3. Do not vacuum hot, burning or smoking material such as cigarettes, matches or hot ash.
4. Do not vacuum combustible liquids or use in areas where combustible liquids may be present without taking proper safety measures.
5. Keep objects, loose clothing, hair and body parts away from openings and moving parts.
6. Keep all openings free of lint, dust or anything that impedes air flow.
7. Be extra careful when cleaning stairs.
8. Use only attachments and filters recommended by Goodway.
9. Strict supervision is required when vacuum is operated near children.

ELECTRIC VACUUMS

1. To avoid electrical shock, never expose vacuum to rain. Store vacuum indoors in a cool, dry area.
2. Unplug the power cord when servicing the vacuum, changing filters or leaving the vacuum unattended.
3. Turn off all controls before unplugging the power cord.
4. When plugging the power cord, grasp the plug – not the cord.
5. Do not use the vacuum if cord or plug is damaged.
6. Do not handle the vacuum with wet hands.
7. Do not roll the vacuum over the power cord, pull the cord, close a door on the cord or pull the cord around sharp corners. Keep the cord away from hot surfaces.

8. Vacuums are supplied with a three conductor cord and a ground plug and should be used with a grounding receptacle to protect the operator from electrical shock. DO NOT remove the grounding pin. If an extension cord is used, it must be sufficiently heavy and of a three conductor type.

SAVE THESE INSTRUCTIONS

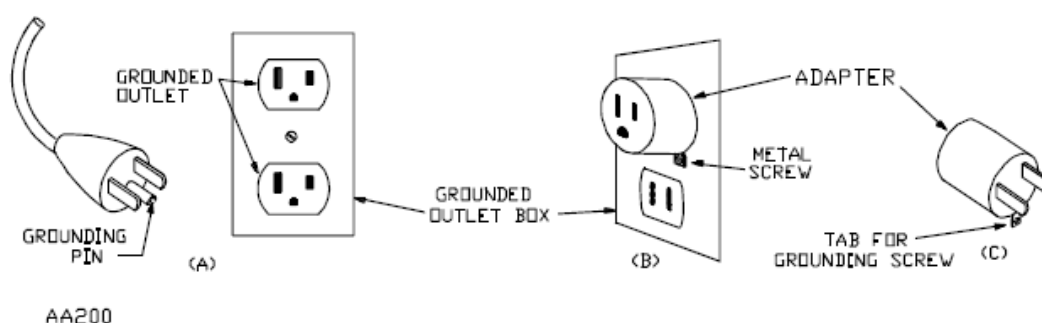
GROUNDING INSTRUCTIONS

This appliance must be grounded. If it should malfunction or breakdown, grounding provides a path of least resistance for electric current to reduce the risk of electric shock. This appliance is equipped with a cord having an equipment-grounded conductor and grounding plug. The plug must be inserted into an appropriate outlet that is properly installed and grounded in accordance with all local codes and ordinances.

WARNING: Improper connection of the equipment-grounding conductor can result in risk of electric shock. Check with a qualified electrician or service person if you are in doubt as to whether the outlet is properly grounded. Do not modify the plug provided with the appliance – if it will not fit the outlet, have a proper outlet installed by a qualified electrician.

Some models (see nameplate) are for use on a nominal 120-volt circuit and has a grounding attachment plug that looks like the plug illustrated in sketch A below. A temporary adaptor that looks like the adaptor illustrated in sketches B and C may be used to connect this plug to a two pole receptacle as shown in sketch B if a properly grounded outlet is not available. The temporary adaptor should be used only until a properly grounded outlet (sketch A) can be installed by a qualified electrician. The green colored rigid ear, lug or the like extending from the adaptor must be connected to a permanent ground such as a properly grounded outlet box cover. Whenever the adaptor is used, it must be held in place by a metal screw.

NOTE: In Canada, the use of an adaptor is not permitted by the Canadian Electrical Code.



SET-UP AND OPERATING INSTRUCTIONS

Remove from packaging and inspect unit. Report any discrepancies to Goodway Technologies Corporation's Customer Service at (800) 370-2855.

Position this vacuum cleaner in the area it will be used.

Ensure the filter is in place under the vacuum head.

Attach the ground wire with alligator clip from the motor assembly to the filter canister.

Install the Roll-Vac Attachment with the squeegee blades to the rear of the accessory and the bristles on the front. Insert the pin from the attachment through the mating receiver on the bottom front of the Vacuum Cleaner's dolly and secure with the cotter pin. Attach the hose to the intake manifold of the vacuum cleaner.

Insert the plug into an outlet of the proper voltage and current rating. See the vacuum's nameplate for its electrical rating.

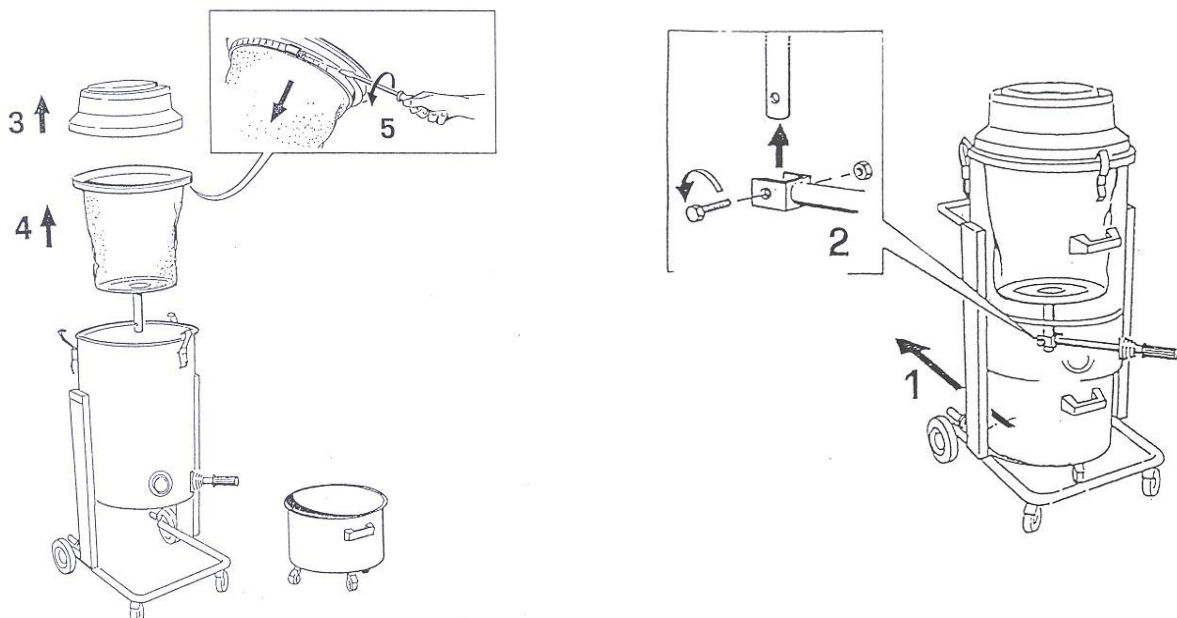
The light will illuminate. If it doesn't, check the electrical outlet.

Turn the unit on and begin vacuuming.

For top performance, clean the filters regularly. Clogged filters restrict air flow and reduce suction.

REPLACEMENT OF THE FILTER

1. Release the container.
2. Unscrew the nuts that holds the filter cage and release the top clamps that block the filter container (see figure).
3. Remove the vacuum head.
4. Remove the filter container.
5. Take the filter out by loosening the filter clamps.
6. The inverse operation for re-assembly the filter.



HOW TO EMPTY THE CONTAINER

WARNING – As the filter will be dirty, protective eyewear, breathing mask and gloves must be worn.

To empty the debris container, turn off the vacuum motor and disconnect the plug from the power socket. Turn the two levers on the side of the vacuum cleaner fully forward. The debris container is now unlocked and easily transportable. When the container has been emptied, put it in its initial point and make sure that it is correctly arranged. Turn the two levers back to their original position and the container will be automatically locked. At this point the vacuum cleaner is ready to be used.



TROUBLESHOOTING

Loss of Suction:

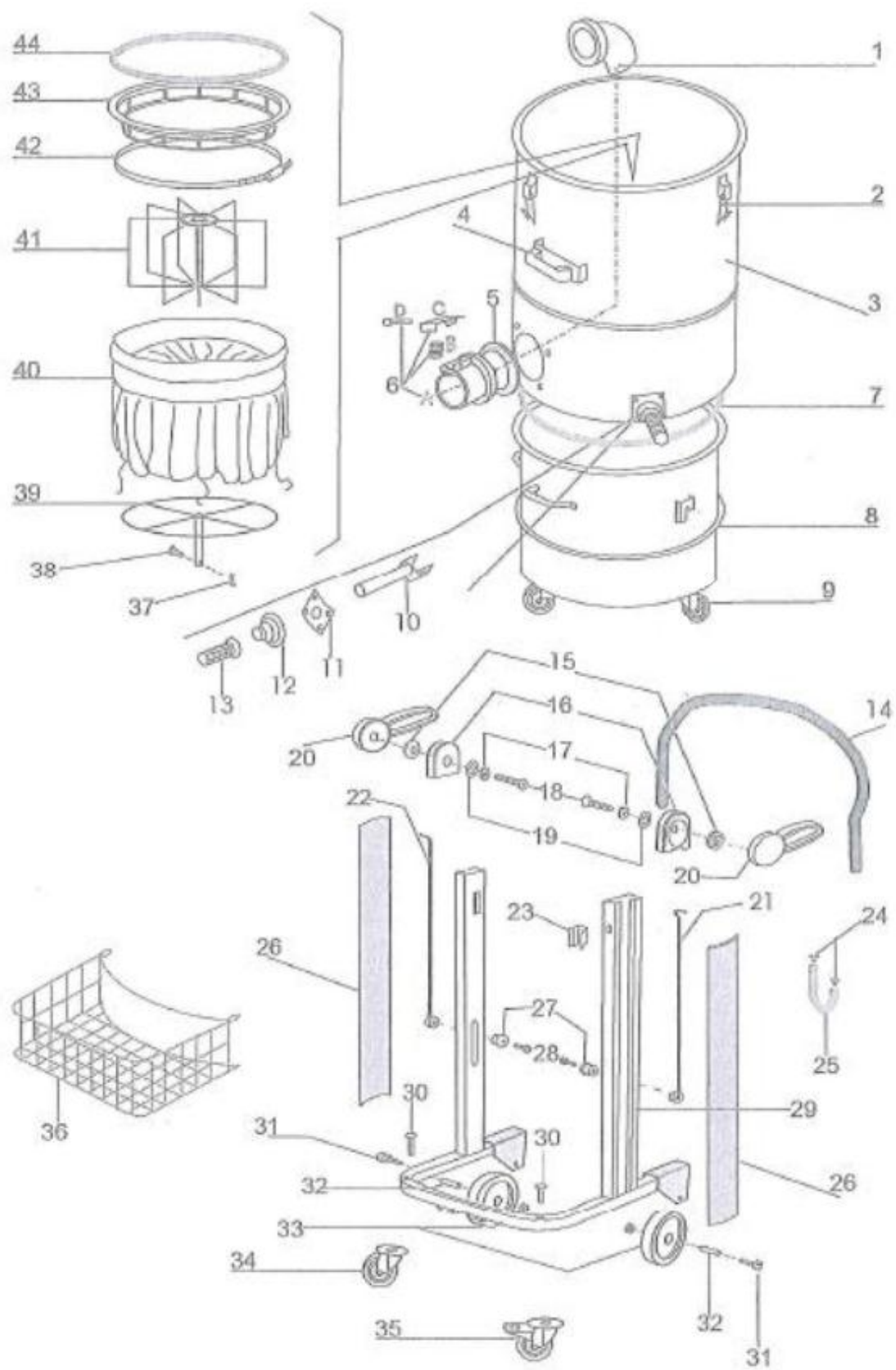
- 1. Make sure unit is plugged into an outlet of the proper voltage/current rating.
- 2. Check for clogged filters.
- 3. Check hose and tools for obstructions or holes.
- 4. Check vacuum intake for clogging.
- 5. Check that tank is not too full.
- 6. Check drum for smooth, even top for proper vacuum seal.
- 7. Check vacuum lid or drum adapter sealing ring.
- 8. Check drum for holes or leaks.
- 9. If the motors do not operate, the brushes need replacing. Contact Goodway at (800)333-7467 for replacements.

PARTS BREAKDOWN

DV-RV Vacuum Head PARTS BREAKDOWN

Detail "1" (3-engines)	Detail "4" (3-engines)	Detail "5"
Detail "1" (2-engines)	Detail "4" (2-engines)	

DV-RV Filter Canister and Debris Collection Tank Parts Breakdown



PARTS LIST

DV-RV Filter Canister and Debris Collection Tank Parts List

Ref#	Part#	Qty	Description
1	AR2415	1	Die-cast deflector
2	AR2002	3	Snap fastening
3	AR2058	11	Filter chamber
4	AR2001	1	Handle
5	AR2003	1	Union seal
6(a)	AR2413	1	Die-cast union
6(b)	AR2417	1	Die-cast union spring
6(c)	AR2418	1	Die-cast union pawl
6(d)	AR2416	1	Die-cast union pawl pin
7	AR2059	1	Container chamber seal
8	AR2060	1	Container
9	AR2062	4	castor

10	AR2063	1	Filter shaker lever
11	AR2065	1	Filter shaker flange
12	AR2066	1	Bellows
13	AR2008	1	Filter shaker knob
14	AR3923	1	Push handle
15	AR3509	2	Metallic lever mechanism rotation fulcrum
16	AR3508	2	Metallic aluminium body
17	AR3507	2	Metallic rotation closing washer
18	AR3506	2	Screw
19	AR3505	2	Nylon spacer
20	AR3510	2	Metallic container fastening lever
21	AR3503	1	RH metallic lifting/release rod
22	AR3504	1	LH metallic lifting/release rod
23	AR3165	1	Chromed curve spring
24	AR3115	2	Cable hanger head cover
25	AR3452	1	2-hole cable hanger hook
26	AR3499	2	PLT profile metallic columns
27	AR2363	2	Fastening lever fulcrum
28	AR3513	2	Screw
29	AR3921	1	Metallic trolley frame
30	AR3922	2	Screw
31+32	AR4299KIT	2	Wheel axles kit
33	AR4299	2	Wheel
34	AR2005	1	Castor
35	AR2006	1	Castor
36	AR3878	1	Accessory basket
37	AR2480	1	Zig-zag spring
38	AR2481	1	Filter shaker cage lock pin
39	AR2457	1	Filter shaker cage
40	DA-PF-14	1	Filter 14 pocket
41	AR2456	1	14-spoke filter tightener cage
42	AR2018	1	Filter clamp
43	AR2580	1	Filter holder ring
44	AR2013	1	“U” shaped filter-holder seal

DV-RV Vacuum Head Parts List

Ref#	Part#	Qty	Description
1	AR4082	1	Head cover
2	AR4059	1	Spacer
3	AR4060	1	Adhesive Silencer
4	AR4085	2	Cooling Ring
5	AR4083	2	Handle
6	AR4084	4	Plastic Adapter
7	AR2029	1	Power Cord
8	380-6-P	1	DV-E2 Plug
9	AR2028	1	Spiral Lead
10	AR3372	1	Strain Relief
11	AR4073	1	Adhesive Silencer
12	AR4058	1	Head Housing
13	AR4086	1	Faceplate
14	AR4087	1	Control Board
15	AR3524	1	Vacuum Gauge
16	AR3517	1	Green Warning Light
17	AR3518	1	Red Warning Light
18	AR4088	2	On/OFF Switch
19	AR4089	1	DV-E2 Spacer Insert
38	AR2037	4	Gasket/Spacer
39	DA-E2B-MOTOR	2	115-Volt Motor
39	DA-E3B-MOTOR	3	230-Volt Motor
40	AR4071	1	Silencer Base
41	AR2098	2	Mesh Screen
42	AR4070	1	Head Base
43	AR4097	2	Fastening Cap

We Are Here to Serve You!

For **Sales** Call: 1-800-333-7467

For **Service** Call: 1-800-370-2855

Goodway Technologies Corporation
manufactures and distributes a complete line of Tube/Pipe
Cleaning Systems, Duct Cleaning Systems, Vacuums, Floor
Machines, Hi-Pressure Washers and other maintenance
related equipment.



GOODWAY TECHNOLOGIES CORPORATION
420 WEST AVENUE, STAMFORD, CT 06902, USA
Tel: 203-359-4708 · Toll-Free Tel: 800-243-7932
Fax: 203-359-9601 · Toll-Free Fax: 800-359-9625
E-Mail: goodway@goodway.com
Internet: www.goodway.com