



DV-3-SSH

Industrial Vacuum Cleaner

OPERATING AND MAINTENANCE INSTRUCTIONS



Goodway Technologies Corporation
420 West Avenue
Stamford, CT 06902-6384
Phone (203) 359-4708
Toll Free 1-800-333-7467
Fax (203) 359-9601
www.goodway.com

Effective date April 1, 2013

©Copyright 2011 Goodway Technologies Corp., Stamford, CT USA

Goodway is a registered trademark of Crossford International LLC

Goodway reserves the right to improve products; contact the factory for the latest configuration and uses.

INTRODUCTION

Thank you for purchasing this Goodway vacuum. We appreciate your business and look forward to serving you in the future. As with all Goodway products, you can be assured that the finest quality components and workmanship have gone into this machine.

Please take a few minutes to read the following Operating and Maintenance Instructions. By carefully following the instructions, you will obtain years of trouble free service from this product. Please pay particular attention to the safety instructions and exercise caution when using this machine.

We are here to serve you!
For *Sales* call
1-800-333-7467
For *Service* call
1-800-370-2855
Goodway Technologies Corp.

IMPORTANT SAFETY INSTRUCTION

READ ALL INSTRUCTIONS BEFORE USING THIS VACUUM CLEANER

WARNING –To reduce the risk of fire, electric shock or injury:

- Do not leave appliance when plugged in. Disconnect unit from power when not in use or before servicing.

WARNING – To reduce the risk of electric shock – Do not use outdoors or on wet surfaces.

- Use only as described in this manual. Use only manufacturer's recommend accessories and spare parts.
- Do not allow to be used as a toy. Close attention is necessary when used by or near children.
- Do not use with a damaged cord or plug. If unit is not working as it should, has been dropped, damaged, left outdoors, or dropped into water, contact Goodway Technologies Corporation's Customer Service at (800) 370-2855.
- Do not pull or carry by cord, use cord as a handle, close a door on cord, or pull cord around sharp edges or corners. Do not run appliance over cord. Keep cord away from heated surfaces.
- Do not unplug by pulling on cord. To unplug, grasp the plug, not the cord.
- Do not handle plug or appliance with wet hands.
- Do not put any objects into openings. Do not use with any opening blocked; keep free of dust, lint, hair and anything that may reduce airflow.
- Keep hair, loose clothing, fingers, and all parts of body away from openings and moving parts.
- Turn off all controls before unplugging.
- Use extra careful when cleaning stairs.
- Do not use to pick up flammable or combustible liquids, such as gasoline, or use in areas where they may be present.
- Connect to a properly grounded outlet only. See grounding instructions.
- Do not pick up anything that is burning or smoking, such as cigarettes, matches, or hot ashes.

- Do not use without dust bag and/or filters in place.

SAVE THESE INSTRUCTIONS

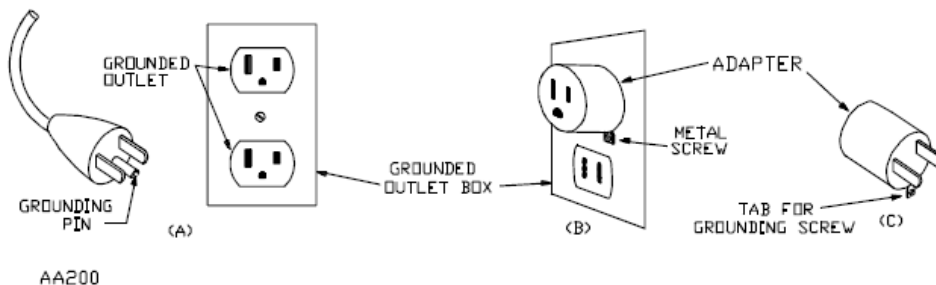
GROUNDING INSTRUCTIONS

This appliance must be grounded. If it should malfunction or breakdown, grounding provides a path of least resistance for electric current to reduce the risk of electric shock. This appliance is equipped with a cord having an equipment-grounded conductor and grounding plug. The plug must be inserted into an appropriate outlet that is properly installed and grounded in accordance with all local codes and ordinances.

WARNING: Improper connection of the equipment-grounding conductor can result in risk of electric shock. Check with a qualified electrician or service person if you are in doubt as to whether the outlet is properly grounded. Do not modify the plug provided with the appliance – if it will not fit the outlet, have a proper outlet installed by a qualified electrician.

Some models (see nameplate) are for use on a nominal 120-volt circuit and has a grounding attachment plug that looks like the plug illustrated in sketch A below. A temporary adaptor that looks like the adaptor illustrated in sketches B and C may be used to connect this plug to a two pole receptacle as shown in sketch B if a properly grounded outlet is not available. The temporary adaptor should be used only until a properly grounded outlet (sketch A) can be installed by a qualified electrician. The green colored rigid ear, lug or the like extending from the adaptor must be connected to a permanent ground such as a properly grounded outlet box cover. Whenever the adaptor is used, it must be held in place by a metal screw.

NOTE: In Canada, the use of an adaptor is not permitted by the Canadian Electrical Code.



SET-UP

1. Remove from packaging and inspect unit. Report any discrepancies to Goodway Technologies Corporation's Customer Service at (800) 370-2855.
2. Position this vacuum cleaner in the area it will be used.
3. Ensure the filter is in place under the vacuum head.
4. Attach the ground wire with alligator clip from the motor assembly to the filter canister.
5. Attach a hose assembly into the manifold on the front of the vacuum cleaner.
6. Insert the plug into an outlet of the proper voltage and current rating. See the vacuum's nameplate for its electrical rating.
7. The light will illuminate. If it doesn't, check the electrical outlet.

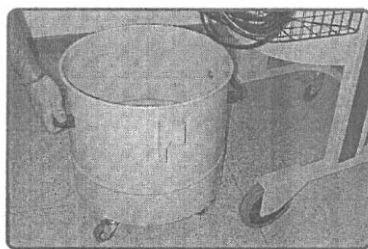
OPERATIION

1. Grip one end of the flexible hose.
2. The three motors are controlled by switchs on the motor head. Switch each one on to start suction. Unit takes a few seconds to get to speed.
3. Note that there is a vacuum gage located next to the the start / stop switches. As the filter gets dirty the negative pressure value will increase so this gage can be used to indicate when the filter shaker should be used or the filters need to be replaced.
4. To stop the vacuum cleaner, switch off the motors.

To Empty the Debris Container:

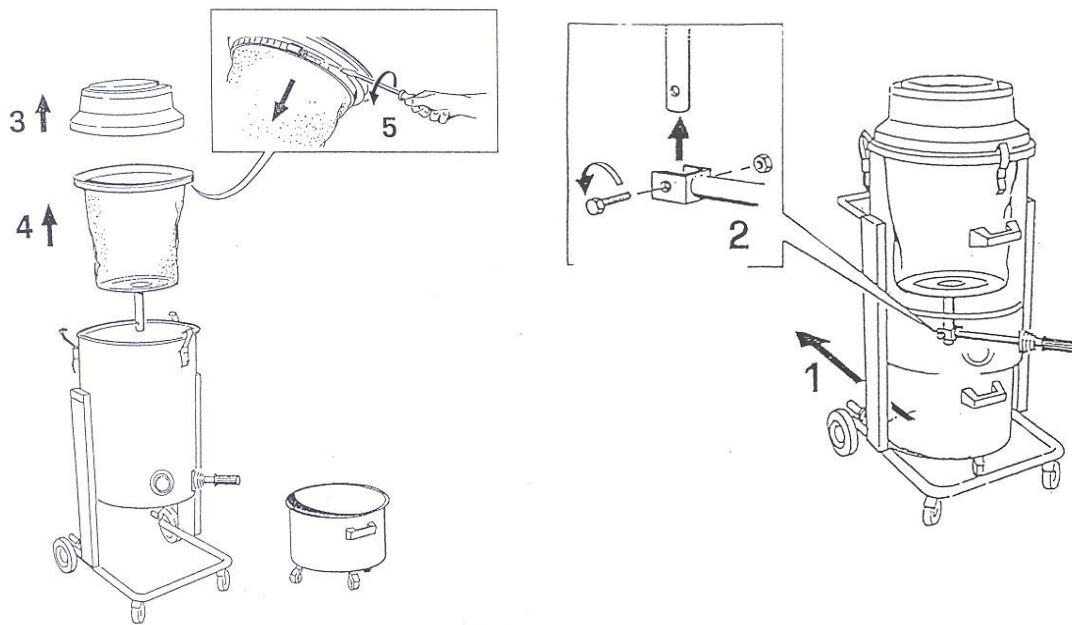
WARNING – As the filter will be dirty, protective eyewear, breathing mask and gloves must be worn

Before emptying the debris container, make sure the motor is turned off. Turn the two levers on the side of the vacuum cleaner fully forward. You can now remove the debris container by rolling it out from underneath the unit. When the container has ben emptied, put it in its initial point and make sure that it is correctly arranged. Turn the two levers back to their original position and the container will be automatically locked.



To Change the Filter:

1. Release the container.
2. Unscrew the nuts that holds the filter cage and release the top clamps that block the filter container (see figure).
3. Remove the vacuum head.
4. Remove the filter container.
5. Take the filter out by loosening the filter clamps.
6. The inverse operation for re-assembly the filter.



TROUBLESHOOTING

Loss of Suction:

1. Make sure unit is plugged into an outlet of the proper voltage/current rating.
2. Check for clogged filters.
3. Check hose and tools for obstructions or holes.
4. Check vacuum intake for clogging.
5. Check that tank is not too full.
6. Check drum for smooth, even top for proper vacuum seal.
7. Check vacuum lid or drum adapter sealing ring.
8. Check drum for holes or leaks.
9. If the motors do not operate, the brushes need replacing. Contact Goodway at (800)333-7467 for replacements.

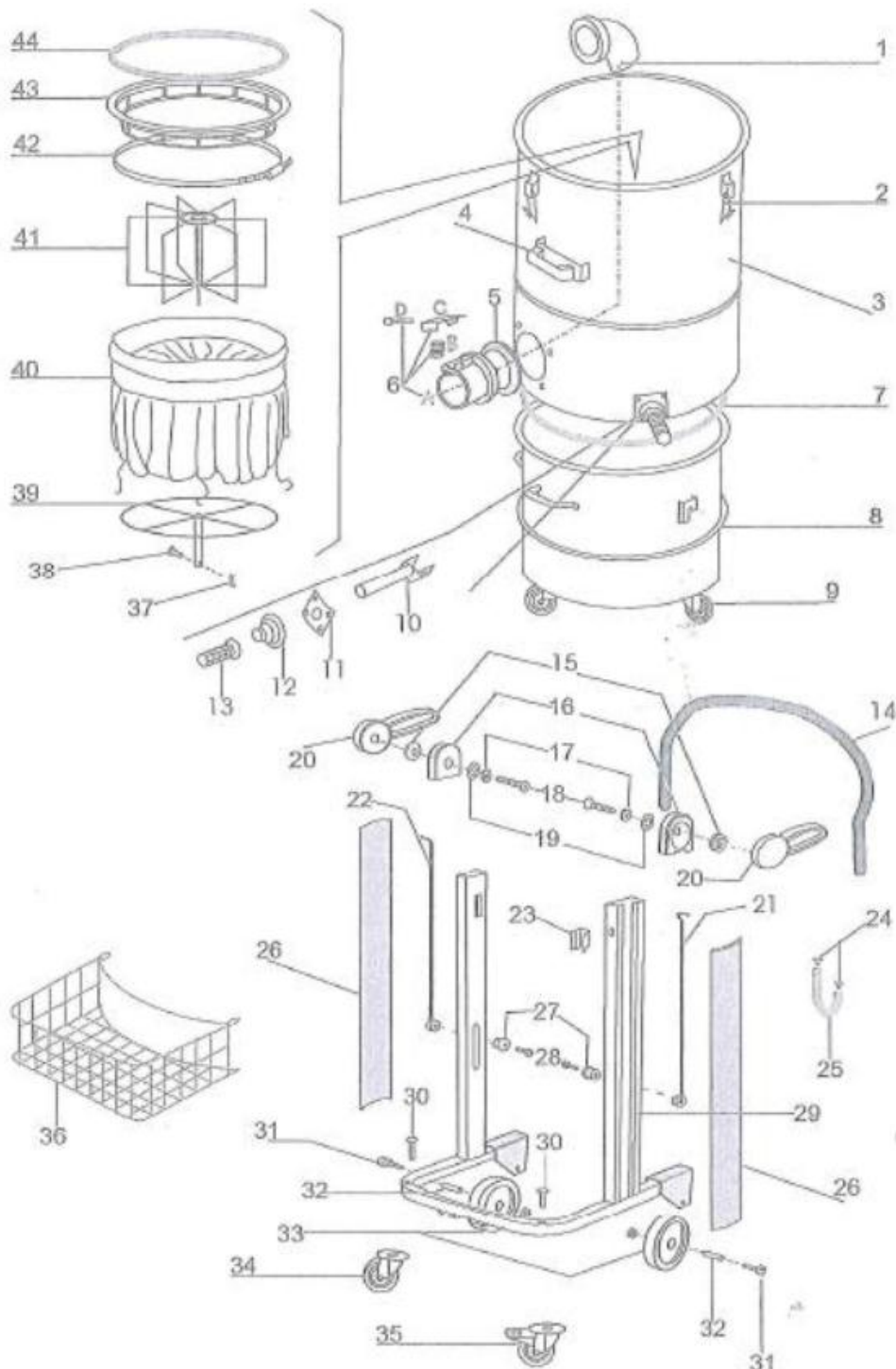
SPECIFICATIONS

Specifications	DV-3-SSH
Motor Power:	3 HP (total)
Input Power:	115 V, 18.2 amps, 50/60 Hz AC
Static Water Lift:	81"
Air Displacement:	286 CFM
Filtration:	HEPA Filtration
Tank Capacity:	14 gallons stainless steel
Noise Level:	78 dBA
Dimensions:	20½" diameter tank x 49" high
Weight:	145 lbs

DV-3-SSH Parts List

REF#	Part#	Qty.	Description
1	AR2415	1	Die-cast deflector
2	AR2002	3	Snap fastening
3	AR2058X	1	Filter chamber
4	AR2001	1	Handle
5	AR2003	1	Union seal
6(a)	AR2413	1	Die-cast union
6(b)	AR2417	1	Die-cast union spring
6(c)	AR2418	1	Die-cast union pawl
6(d)	AR2416	1	Die-cast union pawl pin
7	AR2059	1	Container chamber seal
8	AR2060X	1	Container
9	AR2062	4	Castor
10	AR2063	1	Filter shaker lever
11	AR2065	1	Filter shaker flange
12	AR2066	1	Bellows
13	AR2008	1	Filter shaker knob
14	AR3923	1	Push handle
15	AR3509	2	Metallic lever mechanism rotation fulcrum
16	AR3508	2	Metallic aluminum body
17	AR3507	2	Metallic rotation closing washer
18	AR3506	2	8x35 socket countersunk screw for rotation fulcrum
19	AR3505	2	Nylon spacer
20	AR3510	2	Metallic container fastening lever
21	AR3503	1	RH metallic lifting/release rod
22	AR3504	1	LH metallic lifting/release rod
23	AR3165	1	Chromed curve spring
24	AR3115	2	Cable hanger head cover
25	AR3452	1	2-hole cable hanger hook
26	AR3499	2	PLT profile metallic columns
27	AR2363	2	Fastening lever fulcrum
28	AR3513	2	Socket cap screw for slider pawl
29	AR3921	1	Metallic trolley frame
30	AR3922	2	Square under-head screw for metallic trolley castors
31+32	AR4299KIT	2	Wheel axles kit
33	AR4299	2	Wheel
34	AR2005	1	Castor
35	AR2006	1	Castor with brake
36	AR3878	1	Accessory basket
37	AR2480	1	Zig-zag spring
38	AR2481	1	Filter shaker cage lock pin
39	AR2457	1	Filter shaker cage
40	DA-PF-14	1	Filter
41	AR2456	1	14 spoke filter tightener cage
42	AR2018	1	Filter clamp
43	AR2580	1	Filter holder ring
44	2013	1	"u" shaped filter holder seal
NOT SHOWN	DA-AH-HF	1	HEPA FILTER

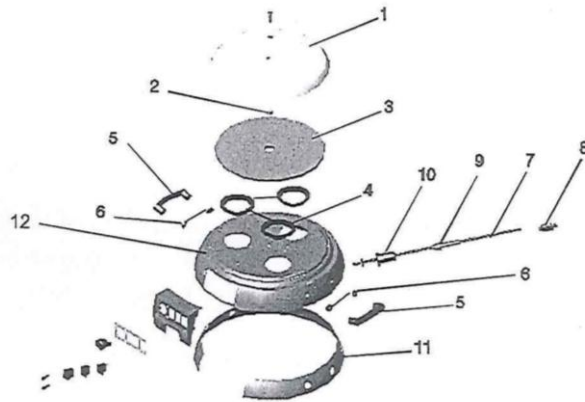
DV-3-SSH Assembly Drawing



DV-3-SSH Vacuum Head Parts List

<u>Ref #</u>	<u>Part #</u>	<u>Description</u>	<u>Qty Required</u>
1	AR4082	Head Cover	1
2	AR4059	Spacer	1
3	AR4060	Adhesive Silencer	1
4	AR4085	Cooling Ring	3
5	AR4083	Handle	2
6	AR4084	Plastic Adapter	4
7	AR2029	Power Cord	1
8	380-6-P	DV-E2 Plug	1
9	AR2028	Spiral Lead	1
10	AR3372	Strain Relief	1
11	AR4073	Adhesive Silencer	1
12	AR4058	Head Housing	1
13	AR4086	Faceplate	1
15	AR3524	Vacuum Gauge	1
16	AR3517	Green Light	1
17	AR3518	Red Light	1
18	AR4088	On/Off Switch	2 or 3
19	AR4089	DV-E2 spacer insert	1
38	AR2037	Gasket/Spacer	4 or 6
39	AA2784	115-Volt Motor	3
40	AR4071	Silencer Base	1
41	AR2098	Mesh Screen	2 or 3
42	AR4070	Head Base	1
43	AR4097	Fastening Cap	2 or 3

DV-3-SSH Vacuum Head Assembly Drawing



<p>Detail "1" (3-engines version)</p>	<p>Detail "4" (3-engines version)</p>	<p>Detail "5"</p>
<p>Detail "1" (2-engines version)</p>	<p>Detail "4" (2-engines version)</p>	



We Are Here to Serve You!

For **Sales** Call: 1-800-333-7467

For **Service** Call: 1-800-370-2855

**Goodway Technologies Corporation
manufactures and distributes a complete line of
Tube/Pipe Cleaning Systems, Duct Cleaning
Systems, Vacuums, Hi-Pressure Washers and other
maintenance related equipment.**

**GOODWAY TECHNOLOGIES CORPORATION
420 WEST AVENUE, STAMFORD, CT 06902 USA
Tel: 203-359-4708 • Toll-Free Tel: 800-243-7932
Fax: 203-359-9601 • Toll-Free Fax: 800-359-9625
goodway@goodway.com
www.goodway.com**