



Model DV-2-MET / DV-AV-MET

ChipMaster Vacuum
Operating and Maintenance Instructions



Goodway Technologies Corporation
420 West Avenue
Stamford, CT 06902-6384 USA
Phone (203) 359-4708
Toll Free 1-800-333-7467
Fax (203) 359-9601
Internet: <http://www.goodway.com>
E-Mail: goodway@goodway.com

©Copyright 2013 Goodway Technologies Corp., Stamford, CT USA
Effective Date October 1, 2013

Goodway is a Trademark of Crossford International.

Goodway reserves the right to improve products; contact the factory for the latest configuration and uses.

INTRODUCTION

Thank you for purchasing this Goodway vacuum. We appreciate your business and look forward to serving you in the future. As with all Goodway products, you can be assured that the finest quality components and workmanship have gone into this machine.

Please take a few minutes to read the following Operating and Maintenance Instructions. By carefully following the instructions, you will obtain years of trouble free service from this product. Please pay particular attention to the safety instructions and exercise caution when using this machine.

We are here to serve you!
For Sales call
1-800-333-7467
For Service call
1-800-370-2855
Goodway Technologies Corp.

GENERAL

The DV-2-MET / DV-AV-MET is an industrial grade vacuum cleaner for the recovery of dry chips and coolant. Its collection tank is easily detached from the rest of the unit making disposal of collected material easy.

The unit consists of the following components:

- Vacuum head/motor assembly with cord and on/off switches (DV-2-MET Model) or Vacuum head with pneumatic hose connection and valve (DV-AV-MET Model).
- Filter canister with nylon filter on dolly.
- Debris collection tank with chip collection basket.

IMPORTANT SAFETY INSTRUCTION

READ ALL INSTRUCTIONS BEFORE USING THIS VACUUM CLEANER

WARNING –To reduce the risk of fire, electric shock or injury:

- Do not leave appliance when plugged in. Disconnect unit from power when not in use or before servicing.

WARNING – To reduce the risk of electric shock – Do not use outdoors or on wet surfaces.

- Use only as described in this manual. Use only manufacturer's recommend accessories and spare parts.
- Do not allow to be used as a toy. Close attention is necessary when used by or near children.
- Do not use with a damaged cord, plug or air hose. If unit is not working as it should, has been dropped, damaged, left outdoors, or dropped into water, contact Goodway Technologies Corporation's Customer Service at (800) 370-2855.
- Do not pull or carry by cord, use cord as a handle, close a door on cord, or pull cord around sharp edges or corners. Do not run appliance over cord. Keep cord away from heated surfaces.
- Do not unplug by pulling on cord. To unplug, grasp the plug, not the cord.
- Do not handle plug or appliance with wet hands.
- Do not put any objects into openings. Do not use with any opening blocked; keep free of dust, lint, hair and anything that may reduce airflow.

- Keep hair, loose clothing, fingers, and all parts of body away from openings and moving parts.
- Turn off all controls before unplugging.
- Use extra careful when cleaning stairs.
- Do not use to pick up flammable or combustible liquids, such as gasoline, or use in areas where they may be present.
- Connect to a properly grounded outlet only. See grounding instructions.
- Do not pick up anything that is burning or smoking, such as cigarettes, matches, or hot ashes.
- Do not use without dust bag and/or filters in place.

SAVE THESE INSTRUCTIONS

GROUNDING INSTRUCTIONS

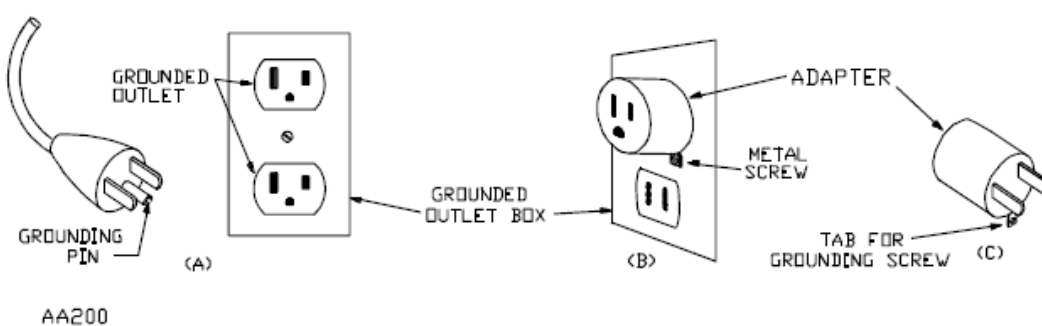
For Electric Powered Vacuums:

This vacuum must be grounded. If it should malfunction or break down, grounding provides a path of least resistance for electric current to reduce the risk of electric shock. This appliance is equipped with a cord having an equipment-grounding conductor and grounding plug. The plug must be inserted into an appropriate outlet that is properly installed and grounded in accordance with all local codes and ordinances.

WARNING – Improper connection of the equipment-grounding conductor can result in a risk of electric shock. Check with a qualified electrician or service person if you are in doubt as to whether the outlet is properly grounded. Do not modify the plug provided with the appliance – if it will not fit the outlet, have a proper outlet installed by a qualified electrician.

This appliance is for use on a nominal 120-volt circuit and has a grounding attachment plug that looks like the plug illustrated in sketch A below. A temporary adaptor that looks like the adaptor illustrated in sketches B and C may be used to connect this plug to a two pole receptacle as shown in sketch B if a properly grounded outlet is not available. The temporary adaptor should be used only until a properly grounded outlet (sketch A) can be installed by a qualified electrician. The green colored rigid ear, lug or the like extending from the adaptor must be connected to a permanent ground such as a properly grounded outlet box cover. Whenever the adaptor is used, it must be held in place by a metal screw.

NOTE: In Canada, the use of an adaptor is not permitted by the Canadian Electrical Code.



For Pneumatic Powered Vacuums:

Static electricity can be generated when using air operated equipment. If the equipment and accessories are not properly grounded, arcing can occur as static electricity is dissipated. If ungrounded equipment is operated near explosive materials or vapors, fire or explosion may result.

FOR MAXIMUM SAFETY, GROUNDED AIR LINES AND VACUUM HOSES MUST BE USED WITH THIS EQUIPMENT. CONSULT THE GOODWAY CATALOG FOR GROUNDED VACUUM HOSES AND ACCESSORIES.

Alternately a grounding wire can be connected to the pipe near the connection for the air hose.

SET-UP

1. Remove from packaging and inspect unit. Report any discrepancies to Goodway Technologies Corporation's Customer Service at (800) 370-2855.
2. Position this vacuum cleaner in the area it will be used.
3. Ensure all filters are in place including the nylon filter (located under the motor head) and the chip basket (located in the detachable collection tank).
4. Attach hose to the intake manifold.

For Electric Powered Vacuums:

Connect the unit to the plant's wiring. See units name plate for power requirements. It is imperative that the ground connection is properly made. See grounding instructions for more information. Unit is now ready for operation.

For Pneumatic Powered Vacuums:

A clean, dry supply of air at a minimum of 50 PSI at 35 CFM is required for operation. The maximum allowable pressure is 90 PSI at 50 CFM.

WARNING – unrestricted compresses air hoses can whip, causing personal injury and equipment damage.

Use a ½" air line minimum, smaller air lines will restrict flow and lessen performance.

Connect a grounded air supply line to the barbed fitting at the intake on the vacuum lid. Make sure the valve on the lid is in the off position. Unit is now ready for operation.

OPERATION

During operation regularly check the liquid level in the level indicator located on the front of the collection tank. When the collection tank is full, the floating device will stop the air flow. The motor(s) will continue to run, but suction ends. At this point it is necessary to empty the collection tank.

For Electric Powered Vacuums:

Switch on the vacuum motor by activating the vacuum motor switch. The motors are each controlled by a switch on the vacuum head. Both motors are on for normal operation but one motor at a time can be used to decrease air flow.

For Pneumatic Powered Vacuums:

Open the valve on the vacuum lid to the desired setting and begin vacuuming. When finished vacuuming, always shut off the main air supply and open the valve at the vacuum to relieve pressure in the air line.

The debris collection tank has a coolant level indicator. Empty the liquid from the tank by using the dump valve on the rear of the tank.

To Empty Debris Collection Tank:

To release the debris container, pull the lever on the chassis up (see figure). The container is now unlocked and easily transportable for emptying.

CAUTION - The chip basket when full will be heavy. Use extreme caution.

Ensure the float, the cylindrical part in the middle of the chip basket, is not discarded during emptying.

When the container has been emptied, put it in its initial point under the filter chamber and make sure that it is correctly arranged. Pull down the release lever and the container will be automatically lifted and locked in place. At this point the vacuum cleaner is ready to be used.



CLEANING

To Clean the Machine:

- 1. Discharge the liquid left inside the collection tank, and empty the chip basket.
- 2. Remove the vacuum head. Clean these assemblies, less the vacuum head, with a low pressure hot water jet.
- 3. Wash out the tank assembly with hot water.
- 4. Reassemble unit.

To Replace the Nylon Filter:

- 1. Switch the motor off
- 2. Take off the motor head
- 3. With a screwdriver, unscrew the metal ring-gasket that runs all around the filter
- 4. Extract the filter clean or replace it with a new one.
- 5. Reassemble unit.

WARNINGS:

- Do not run the machine with used up or torn filters. Immediately replace the filter as soon as you notice the least tearing.
- Check regularly the filtering gasket.
- After checking, changing the filters or cleaning, replace the lids carefully.
- Always check that the wheel brake is on when running the machine.
- Check that the electric system matches the voltage indicated on the identification plate placed on the motor head. Also check that sockets are in good condition. Any maintenance or repair on the electric parts should be carried out by authorized staff.

TROUBLESHOOTING

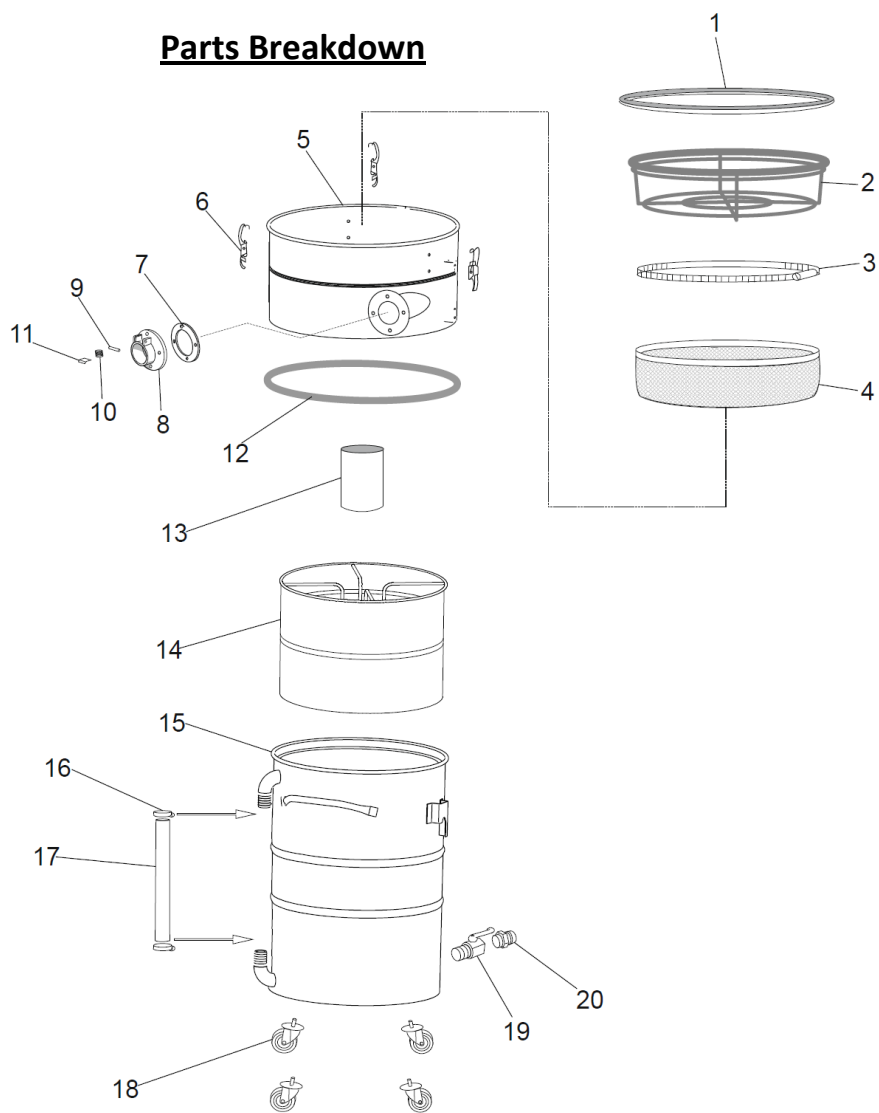
Problem:	Possible Solution:
Suction is weak:	<ul style="list-style-type: none">• Check for clogged filters.• Check hose and tools for obstructions or holes.• Check vacuum intake port for clogging.• Check for proper seal between collection tank and filter canister.• Check for proper seal between filter canister and motor assembly.
In addition to the above check the following for pneumatic vacuums:	<ul style="list-style-type: none">• Make sure air supply is fully turned on.• Check the air supply for obstructions or restrictions such as insufficiently sized line or regulator.• Make sure valve on vacuum head is fully open.• Check the venture nozzle for clogging and clean if necessary.

Contact Goodway Technologies Corporation’s Customer Service at (800) 370-2855 if problems are not resolved.

TECHNICAL DATA

Model:	DV-2-MET	DV-AV-MET
Motor Power:	Twin motors 2.7 HP (total)	N/A
Input Power:	15 amps, 115 V, 50/60 Hz AC	N/A
Air Requirements:	N/A	Minimum 50 PSI at 35 CFM Maximum 90 PSI at 50 CFM
Air Line:	N/A	½” I.D. or larger
Power Supply Cord:	20’,14-3	N/A
Static Water Lift:	90”	160”
Air Displacement:	224 CFM	125 CFM
Filtration:	0.05” metal chip basket	0.05” metal chip basket
Tank:	22 gallons bonderized steel	22 gallons bonderized steel
Dry Capacity:	7 gallons	7 gallons
Wet Capacity:	15 gallons	15 gallons
Noise Level:	76 dBA	76 dBA
Dimensions:	20½” diameter tank x 44” high	20½” diameter tank x 44” high
Weight:	150 lbs	140 lbs

Parts Breakdown

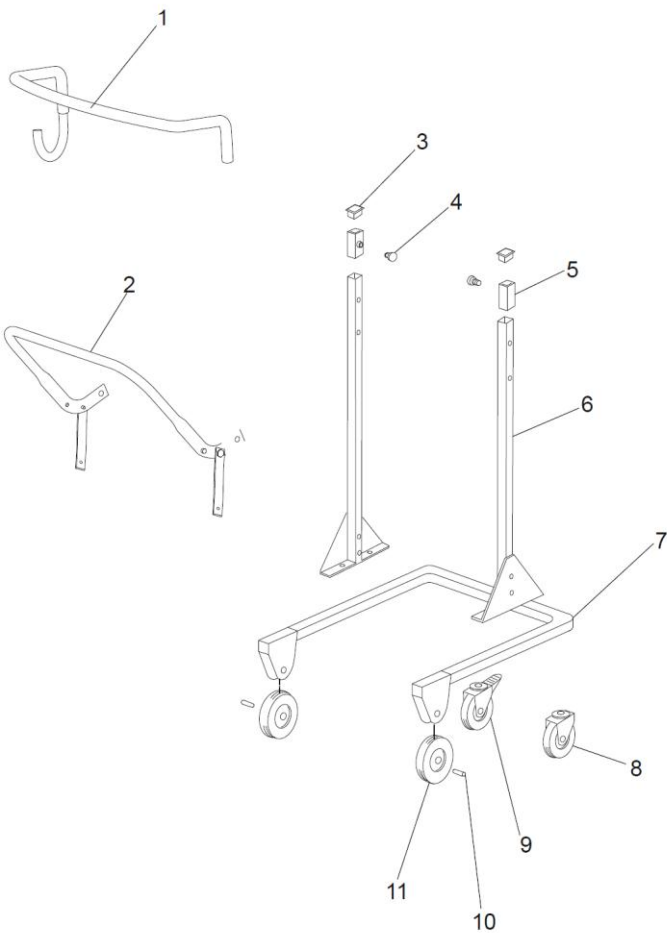


Machine Body Parts List			
Ref #	Part #	Qty	Description
1	AR2013	1	Gasket
2	AR3812	1	Filter Cage
3	AR2018	1	Filter Clamp
4	DA-CNC-NF	1	Nylon Filter
5	AR4756	1	Intake Adapter Ring
6	AR2002	3	Latches
7	GI.0013.0000	1	Gasket
8	SL.0829.0000	1	Manifold
9	SL.0401.0000	1	Pin
10	SL.0402.0000	1	Spring
11	SL.0403.0000	1	Lever
12	AR3485	1	Gasket
13	AR2015	1	Float
14	AR4830	1	Chip Basket
15	AR4757	1	Collection Tank
16	AR4815	2	Hose Clamp
17	AA2841	.6 m	Level Indicator Tube
18	AR2062	4	Castor
19	AR2401	1	Ball Valve
20	AR3161	1	Hose Adapter

Trolley Parts List			
Ref #	Part #	Qty	Description
1	AR3923	1	Push Handle
2	AR2084	1	Release Lever
3	AR2051	2	Cap
4	AR2363	2	Fulcrum
5	AR2178	2	Slider
6	AR4831	2	Upright
7	AR4832	1	Frame
8	AR2005	1	Wheel
9	AR2006	1	Wheel with Brake
10	AR4299/KIT	2	Axle
11	AR4299	2	Wheel

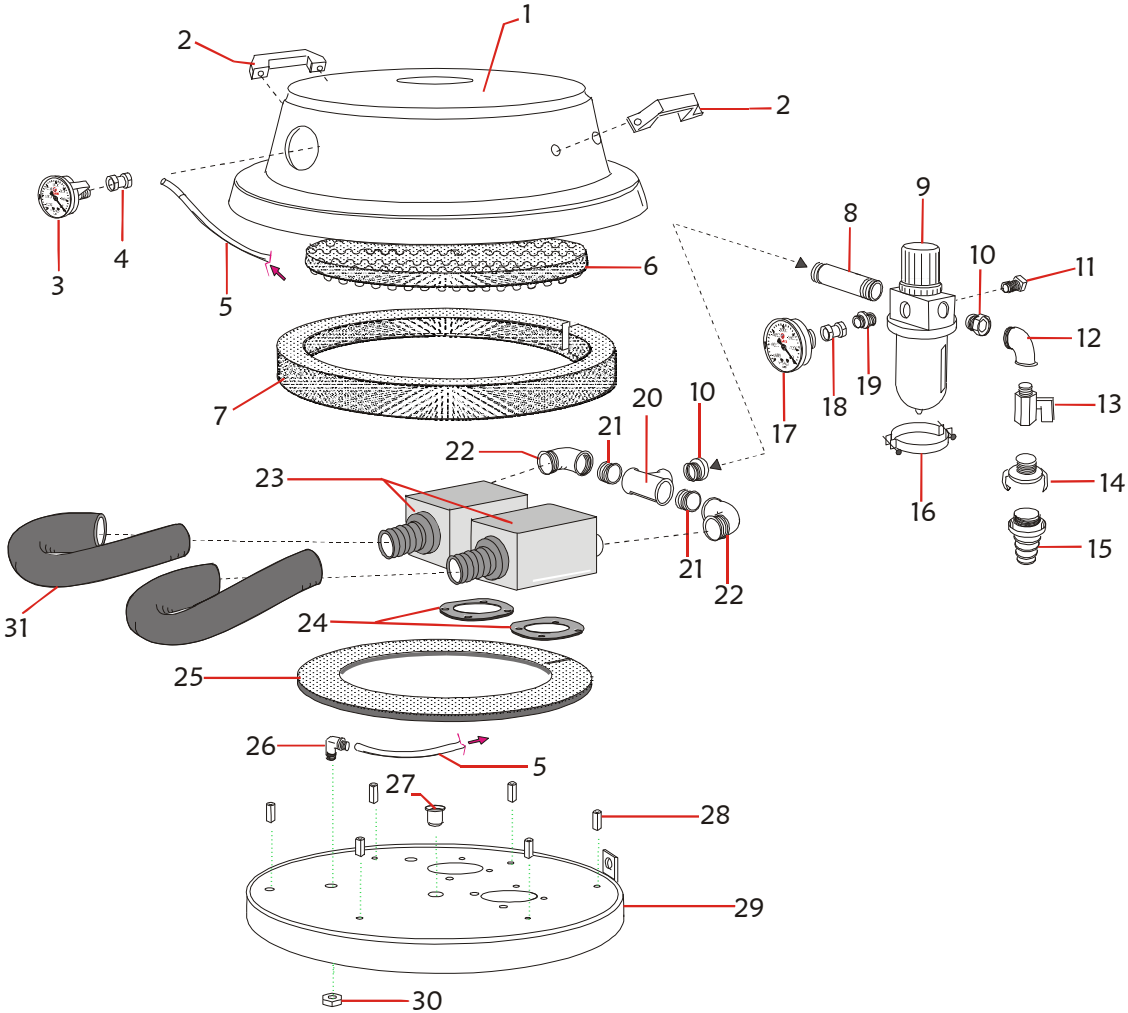
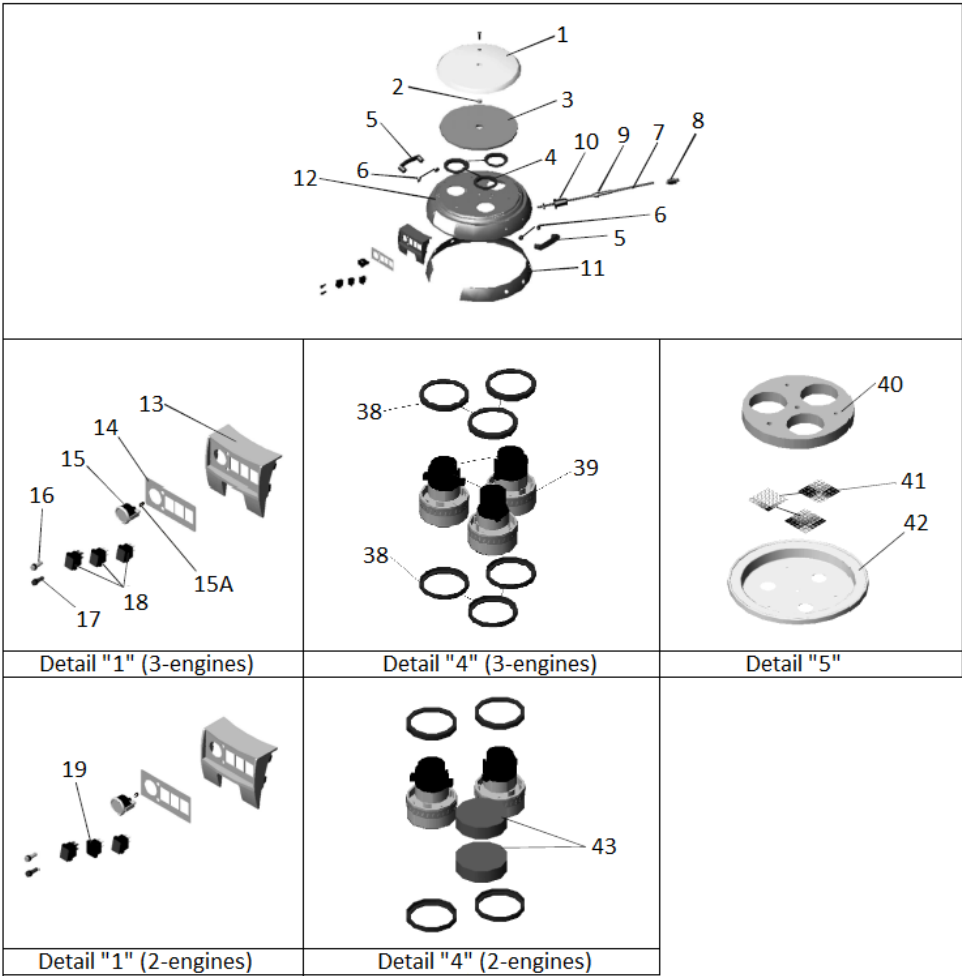
Machine Body

DV-2-MET Motor Head Parts List			
Ref#	Part#	Qty	Description
1	AR4082	1	Head cover
2	AR4059	1	Spacer
3	AR4060	1	Adhesive Silencer
4	AR4085	2	Cooling Ring
5	AR4083	2	Handle
6	AR4084	4	Plastic Adapter
7	AR2029	1	Power Cord
8	380-6-P	1	DV-E2 Plug
9	AR2028	1	Spiral Lead
10	AR3372	1	Strain Relief
11	AR4073	1	Adhesive Silencer
12	AR4058	1	Head Housing
13	AR4086	1	Faceplate
14	AR4087	1	Control Board
15	AR3524	1	Vacuum Gauge
16	AR3517	1	Green Warning Light
17	AR3518	1	Red Warning Light
18	AR4088	2	On/OFF Switch
19	AR4089	1	DV-E2 Spacer Insert
38	AR2037	4	Gasket/Spacer
39	DA-E2B-MOTOR	2	115-Volt Motor
39	DA-E3B-MOTOR	3	230-Volt Motor
40	AR4071	1	Silencer Base
41	AR2098	2	Mesh Screen
42	AR4070	1	Head Base
43	AR4097	2	Fastening Cap




Trolley

DV-2-MET Motor Head



DV-AV-MET Motor Head

DV-AV-MET Parts List			
	Part #	Qty.	Description
	AA1241	1	Air vacuum head complete

We Are Here to Serve You!
For Sales Call: 1-800-333-7467
For Service Call: 1-800-370-2855

**Goodway Technologies Corporation
manufactures and distributes a complete line of Tube/Pipe
Cleaning Systems, Duct Cleaning Systems, Vacuums,
Floor Machines, Hi-Pressure Washers and other
maintenance related equipment.**



**GOODWAY TECHNOLOGIES CORPORATION
420 WEST AVENUE, STAMFORD, CT 06902 USA
Tel: 203-359-4708 • Toll-Free Tel: 800-243-7932
Fax: 203-359-9601 • Toll-Free Fax: 800-359-9625
E-Mail: goodway@goodway.com
Internet: www.goodway.com**