

# Drop-In Sink w/ Side Splashes

## Assembly Instructions



WATERLOO

### General Recommendations

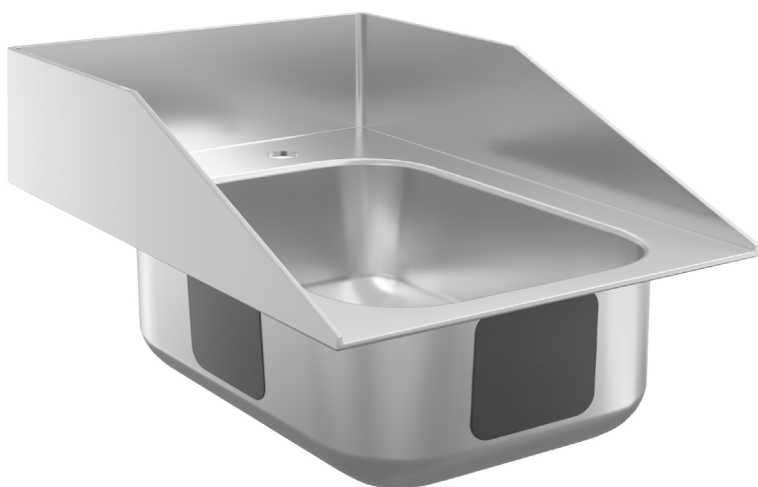
Read installation and maintenance instructions thoroughly before installation. Be sure to use proper tools and always wear personal safety accessories for your protection.

### Tools Required (Not Included)

- Pencil
- Saber saw, keyhole saw, or router
- Power drill
- Silicone caulk
- Safety glasses and cut-resistant gloves
- Wrench

### Parts

- Drop-in sink
- Weld studs and brackets
- Cutout template



# Drop-In Sink w/ Side Splashes

## Assembly Instructions



### Assembly Instructions

Remove all contents from carton. Inspect the drop-in sink for any damage prior to installing. Damaged units should not be installed.

1. Place drop-in sink cutout template at desired location on countertop. This should be cut out along the indicated cut line. Ensure front edge of the drop-in sink is parallel to the countertop edge. This sink contains a lip that can be mounted flush to the front of the counter or concealed in the countertop.
2. Using a pencil, carefully trace along the cutout template cut line onto the countertop. Remove the template from the countertop.
3. Drill a pilot hole inside the cut line.
4. Place the saw inside of the pilot hole and carefully saw along the cut line. If the sink is not installed with the front edge over-hanging your countertop, hide the lip by cutting a small indent into your countertop.
5. Remove the countertop cutout section.
6. Align the drop-in sink in the open space to mark where the four weld studs need to be drilled into the counter.
7. After marking, drill through the counter for each corner of the drop-in sink.
8. Apply sealant around the perimeter of the drop-in sink cutout. Carefully place the drop-in sink in the cutout hole.
9. Slide the brackets over each weld stud and screw on the nuts. Use a wrench to tighten each nut to secure the drop-in sink to the countertop.
10. Clean away any excess caulk or debris with a cloth. Install drain(s).

