

## Drop-In Sinks

### Assembly Instructions

#### General Recommendations

Read installation and maintenance instructions thoroughly before installation. Be sure to use proper tools and always wear personal safety accessories for your protection.

#### Long-Life Care

The stainless steel sinks are easy to keep looking new with minimal care. For best results, always rinse with a mild soap and wipe after each use. Rub lightly with a soft cloth in the direction of the grain line on a regular basis. To avoid damage and discoloration to the sink surface, never use a steel wool or scouring pad.

#### Tools Required

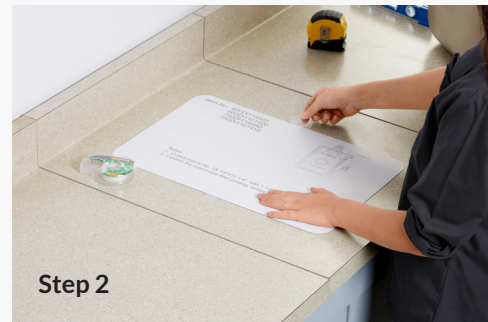
Tape Measure  
Pencil (NOT ink)  
Silicone Adhesive Sealant  
Rags  
Denatured Alcohol  
Ear Protection  
Eye Protection  
Hacksaw/Jigsaw  
Mounting Clips (Included)

#### Assembly Instructions

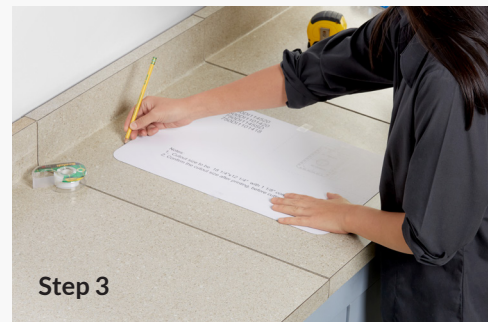
Please carefully read complete instructions before beginning installation.

**Note: These instructions are for installation with solid surface, composite material countertops. It is recommended that a professional countertop installer installs this unit using the instructions below.**

1. Unpack the new sink and check the contents of the materials supplied: Sink, mounting brackets, and cutout template (depending on the model).
2. Preparing the countertop:  
Place the template on the countertop.  
Ensure the template is centered on the counter so that it is parallel to the counter edge and that the installation hole will not interfere with the structure of the cabinet.
3. Tape the template to the countertop to keep it in place and trace the cutout line on the template with a pencil.



Step 2



Step 3

- Using the appropriate cutting tool for the surface your cutting, drill a pilot hole.
- Cut the countertop opening.
- Preparing the sink:  
Place the sink into the installation hole to verify the fit. Adjust the cutout if necessary.
- Attaching the mounting clips:  
Attach the top-mount clips to the sink.



- Installing the sink:  
Apply silicone sealant (not included) around the underside and lip of the sink.
- Carefully lower the sink into the counter.
- Tighten the screws on the top-mount clips evenly until the sink is flush with the counter. Do not over-tighten.
- Wipe excess sealant with a rag.
- Connect drain and water supply according to manufacturer's instruction.

