

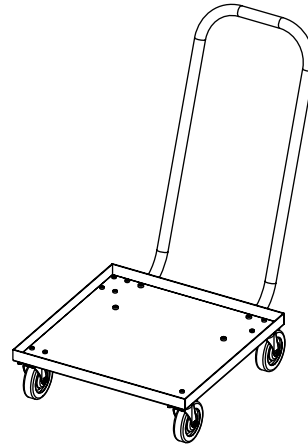
600GRDASH

Dolly with Handle

Assembly Instructions

PARTS:

- (A) Base Plate - 1 pc
- (B) Handle - 1 pc
- (C) Swivel Casters - 2 pcs
- (D) Fixed Casters - 2 pcs



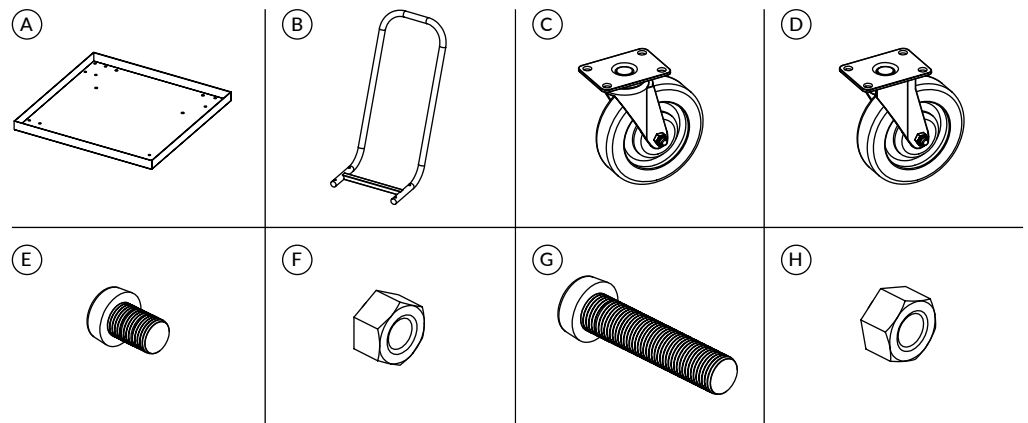
HARDWARE:

- (E) M8×15 Bolts - 16 pcs
- (F) M8 Nuts - 16 pcs
- (G) M10×45 Bolts - 4 pcs
- (H) M10 Nuts - 4 pcs

TOOLS NEEDED:

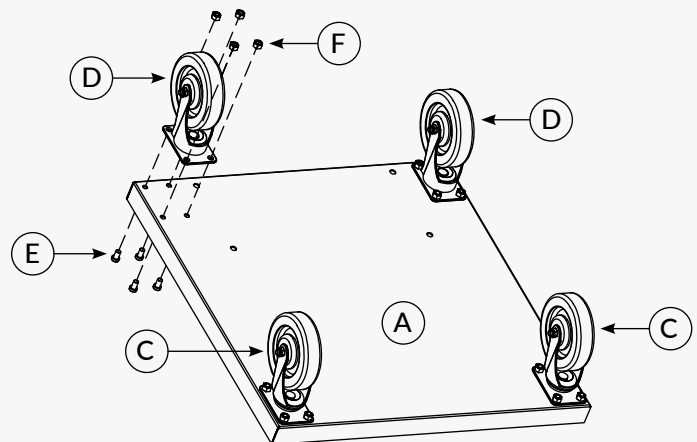
Wrench or socket set
(M8 and M10)

Verify that all components are included before assembly.



Step 1: Install Casters on Base

1. Place the base plate (A) upside down on a flat surface. Find the side with handle mounting holes, as this is the side the fixed casters will be installed onto.
2. Install 2 swivel casters (C) on the side without handle mounting holes using 4 M8×15 bolts (E) and M8 nuts (F) for each caster.
3. Install 2 fixed casters (D) on the side with handle mounting holes using 4 M8×15 bolts (E) and M8 nuts (F) for each caster.
4. Fully tighten all hardware.



Step 2: Attach Handle

1. Flip the dolly on its side and position the handle (B) onto the base plate, aligning mounting holes.
2. Install the handle using 4 M10×45 bolts (G) and M10 nuts (H) through the handle and base.
3. Tighten firmly to ensure the handle is stable.

Final Assembly Check

- Ensure all bolts and nuts are fully tightened.
- Confirm the casters rotate and roll smoothly.
- Verify that fixed casters are aligned in the same direction.
- Check that the handle is securely attached with no movement.

