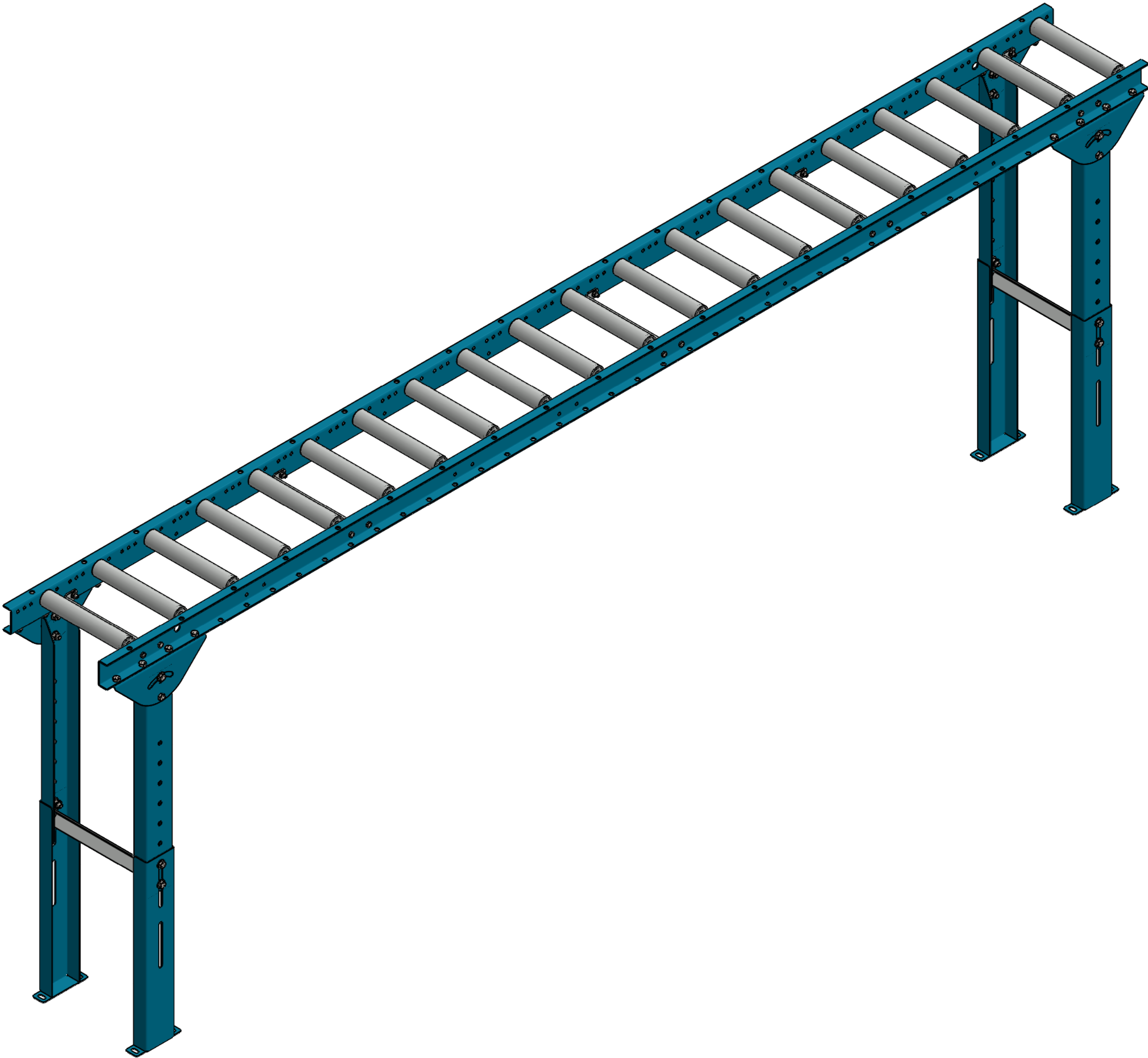



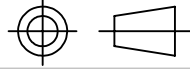
ITEM NO.	QTY.	PART NO.	DESCRIPTION	MATERIAL	Weight	TOTAL WEIGHT
1	1	U10773	10BF Light Duty Gravity Conveyor Bed - 10'Lg. w/ 1.50 OD Rollers @ 6 C-C	See BOM	50.76	50.76
2	2	U10892	Roller Stand Leg Set Assy for Light Duty Gravity Conv. 10'BF, 23' to 38'-1/4" Elv.	see BOM	13.74	27.48
TOTAL WEIGHT:						78.24



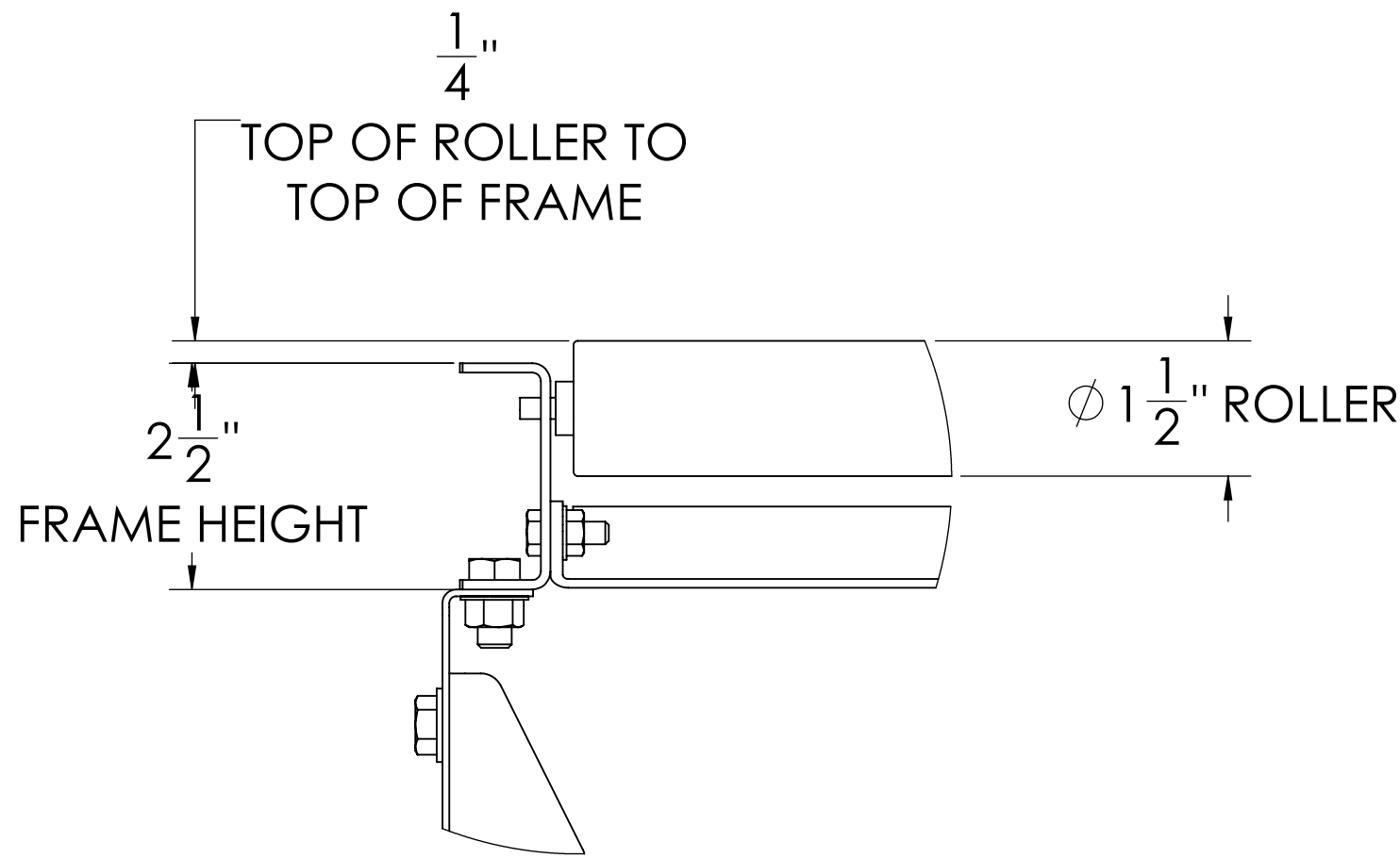
REVISIONS				
REV.	DESCRIPTION	BY	APPROVED	DATE
0	RELEASE FOR MARKETING	TJH	TJH	12/23/2022

NOTES:

- 10" BETWEEN FRAMES
- 12" OVERALL WIDTH
- 10' OVERALL LENGTH
- 1.5" OD GALVANIZED ROLLERS
- FINISH: ULTIMATION BLUE, POWDER COAT
- 6" ROLLERS CENTER-CENTER SHOWN. 3" & 4.5" ROLLER CENTERS ALSO AVAILABLE
- MAXIMUM LOAD PER ROLLER: 90lbs

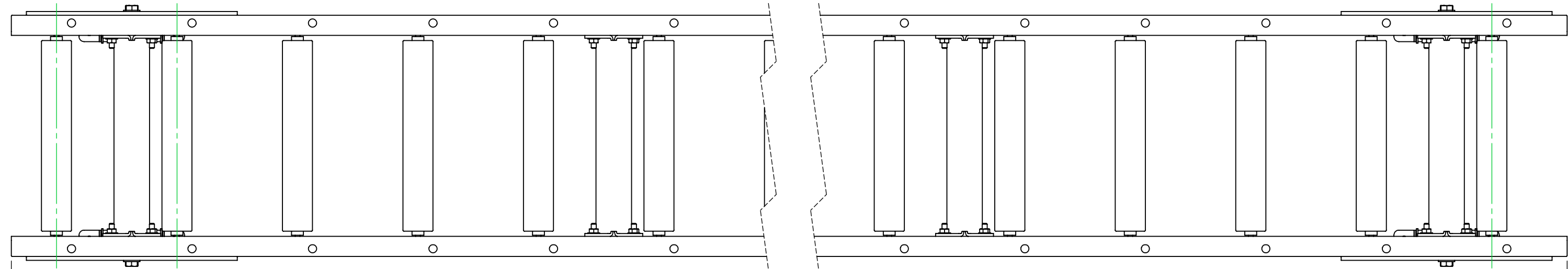
		Ultimation Industries, LLC 15935 Sturgeon St, Roseville, MI 48066 Phone: +1-586-771-1881 ultimationinc.com			
 THIRD ANGLE PROJECTION		UNIT INCH	SHEET 1	SHEETS 1 of 2	SIZE D
DRAWING No. U11106					
10BF LIGHT DUTY GRAVITY CONVEYOR - 10'LG. W/ 1.50" OD ROLLERS @ 6" C/C & (2) RSL SET ASSEMBLIES					
PROPRIETARY AND CONFIDENTIAL <small>THE INFORMATION CONTAINED IN THIS DRAWING IS THE SOLE PROPERTY OF ULTIMATION. ANY REPRODUCTION IN PART OR AS A WHOLE WITHOUT THE WRITTEN PERMISSION OF ULTIMATION IS PROHIBITED.</small>				SCALE 1:5	

REVISIONS				
REV.	DESCRIPTION	BY	APPROVED	DATE
-	See Sheet1	-	-	-

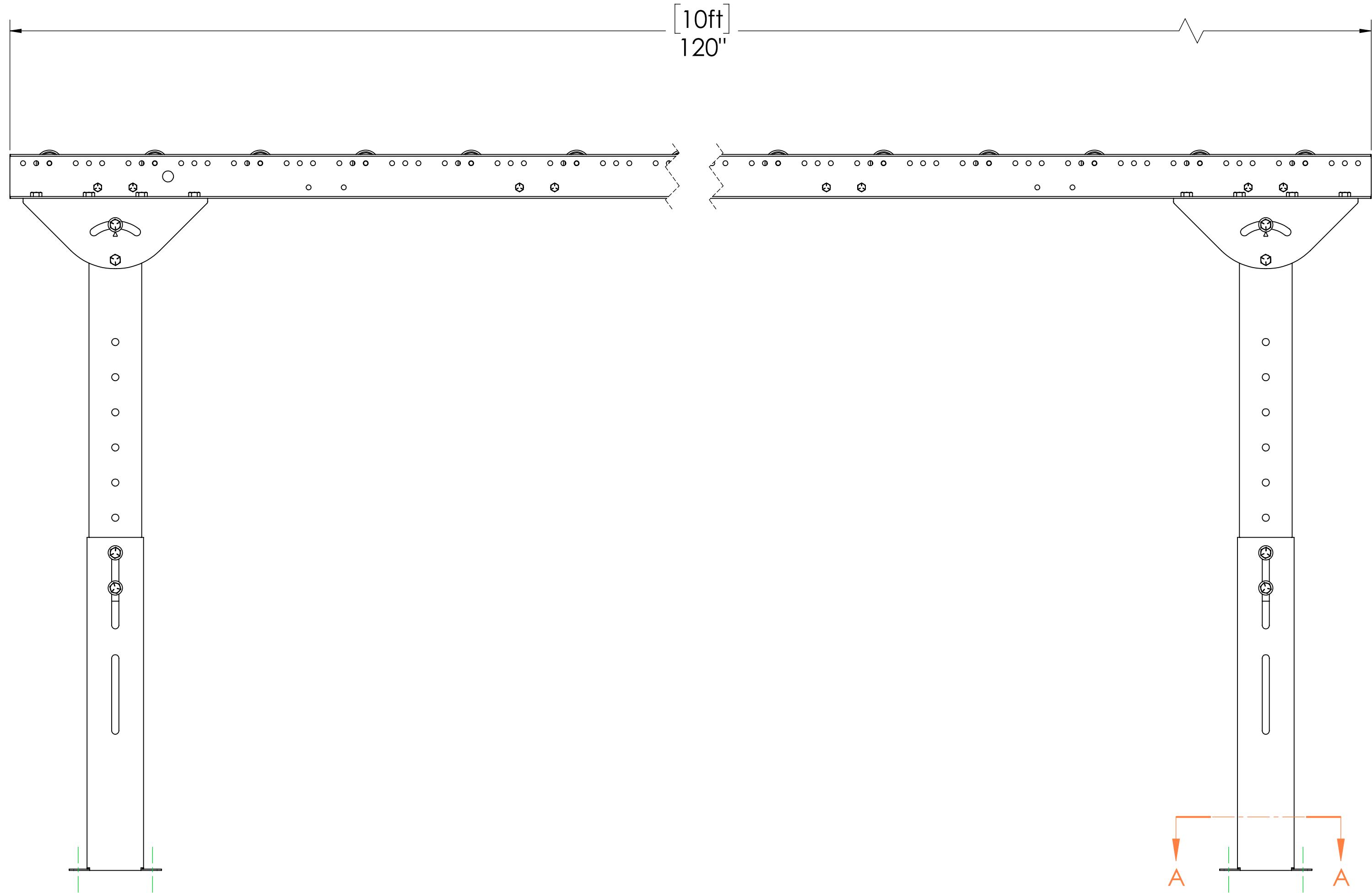
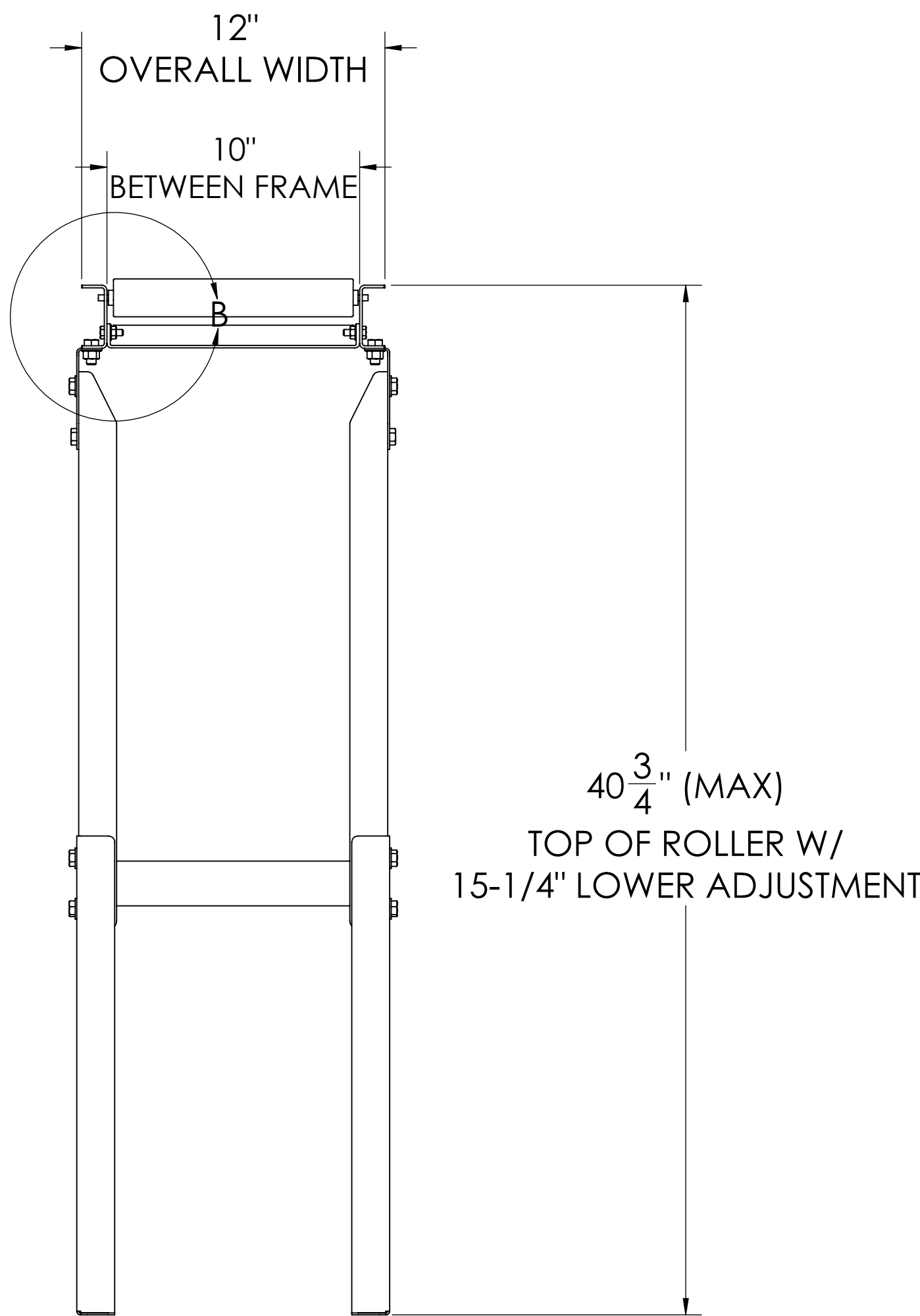
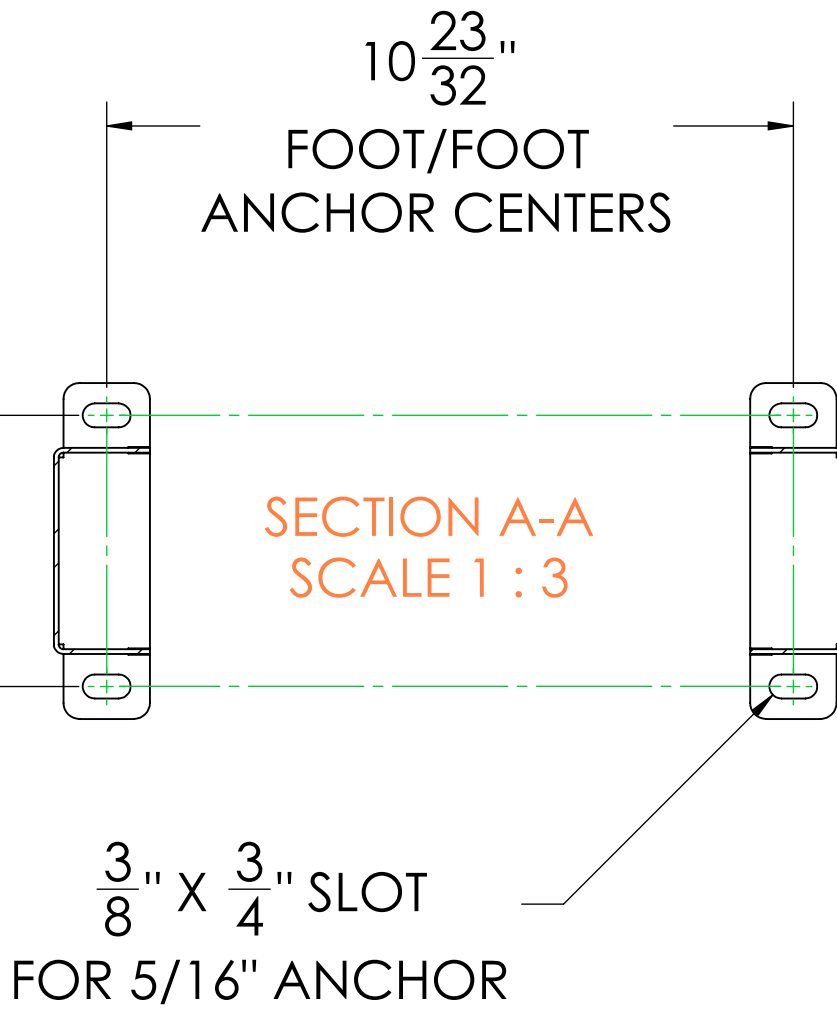


DETAIL B
SCALE 1 : 2

2 1/4"
ROLLER C/L
TO EDGE OF BED



4 1/4"
ANCHOR HOLE C/C



A

ULTIMATION

THIRD ANGLE
PROJECTION

Ultimation Industries, LLC

15935 Sturgeon St, Roseville, MI 48066
Phone: +1-586-771-1881 ultimationinc.com

DRAWING No.

U11106

UNIT
INCH

SHEET
2

SHEETS
2 of 2

SIZE
D

10BF LIGHT DUTY GRAVITY
CONVEYOR - 10'LG. W/ 1.50" OD
ROLLERS @ 6" C/C & (2) RSL SET
ASSEMBLIES

PROPRIETARY AND CONFIDENTIAL

THE INFORMATION CONTAINED IN THIS DRAWING IS THE SOLE
PROPERTY OF ULTIMATION. ANY REPRODUCTION IN PART OR AS
A WHOLE WITHOUT THE WRITTEN PERMISSION OF ULTIMATION IS
PROHIBITED.

SCALE

1:5