

8			7			6	
ITEM NO.	QTY.	PART NO.	DESCRIPTION	MATERIAL	Weight	TOTAL WEIGHT	
1	2	U10888	Roller Stand Pivot Plate for Light Duty Conv.	1023 Carbon Steel Sheet (SS)	0.71	1.42	
2	2	U10887	Roller Stand Upper Leg For Light Duty Gravity Conveyor	1023 Carbon Steel Sheet (SS)	2.60	5.2	
3	2	U10886	Roller Stand Lower Leg For Light Duty Gravity Conveyor	1023 Carbon Steel Sheet (SS)	2.46	4.92	
4	1	U10895	24.08in Lg Leg Spacer for 22BF Roller Leg Stand	Galvanized Steel	2.24	2.24	
5	4	N/A	3/8"-16 x 1.00" HHCS, Grade 5, Zinc Plated	Alloy Steel	0.05	0.2	
6	6	N/A	3/8" SAE Flat Washer, Zinc Plated	Alloy Steel	0.007	0.042	
7	12	N/A	3/8"-16 x 3/4" HHCS, Grade 5, Zinc Plated	Alloy Steel	0.04	0.48	
8	16	N/A	3/8"-16 Flange Lock Nut, Zinc Plated	Alloy Steel	0.02	0.32	
TOTAL WEIGHT:						14.822	

- NOTE:
- FOR 22" BETWEEN FRAME (24" OVERALL)
 - 38-1/4" MAX HEIGHT (TOP OF LEG)
 - 23" MINIMUM HEIGHT (TOP OF LEG)
 - USE WITH LIGHT DUTY UI CONVEYOR FRAMES
 - FINISH: ULTIMATION BLUE, POWDER COAT
 - MAXIMUM LOAD:
 - 600LBS SECURED/LAGGED TO FLOOR
 - 300LBS NO FLOOR CONNECTION

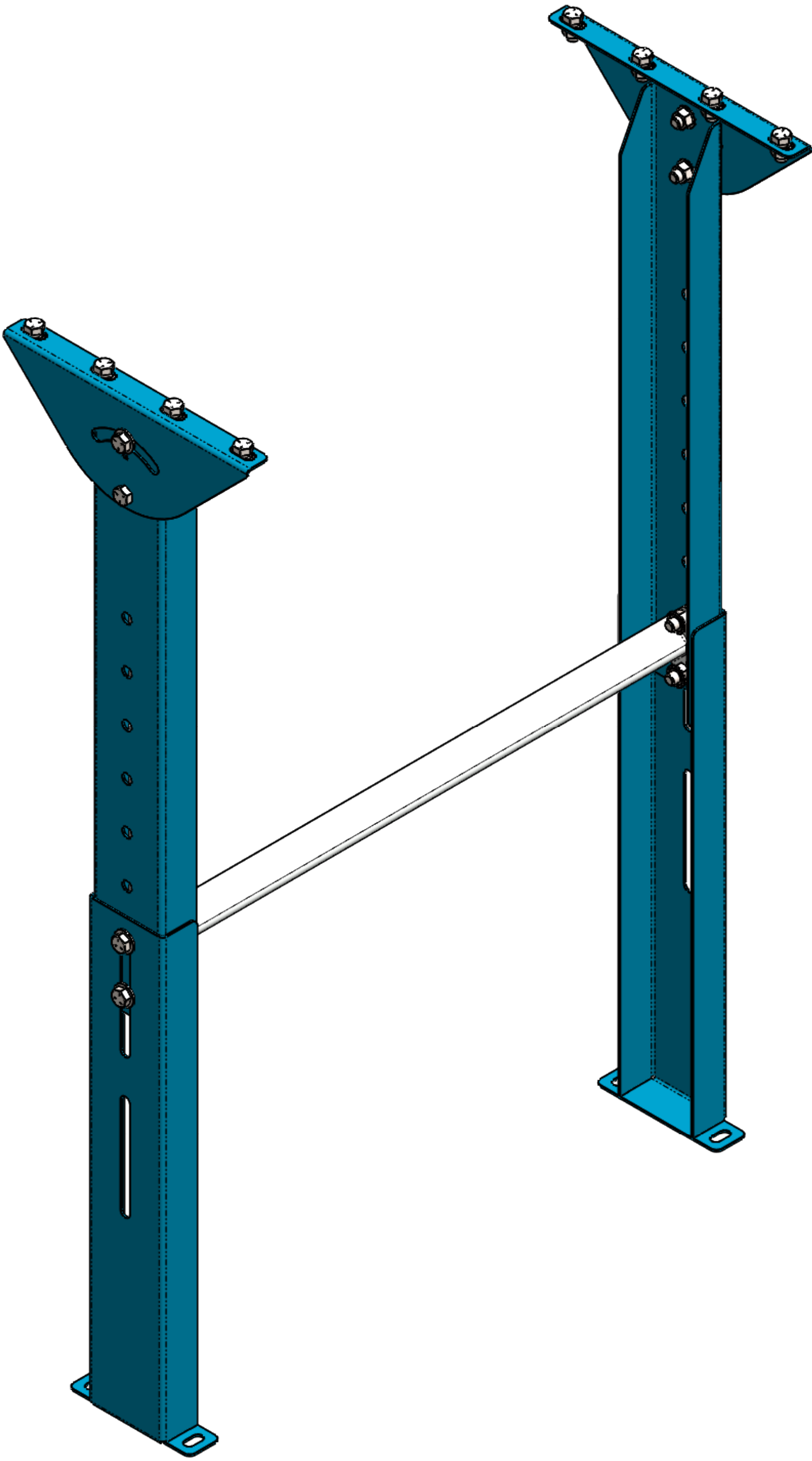
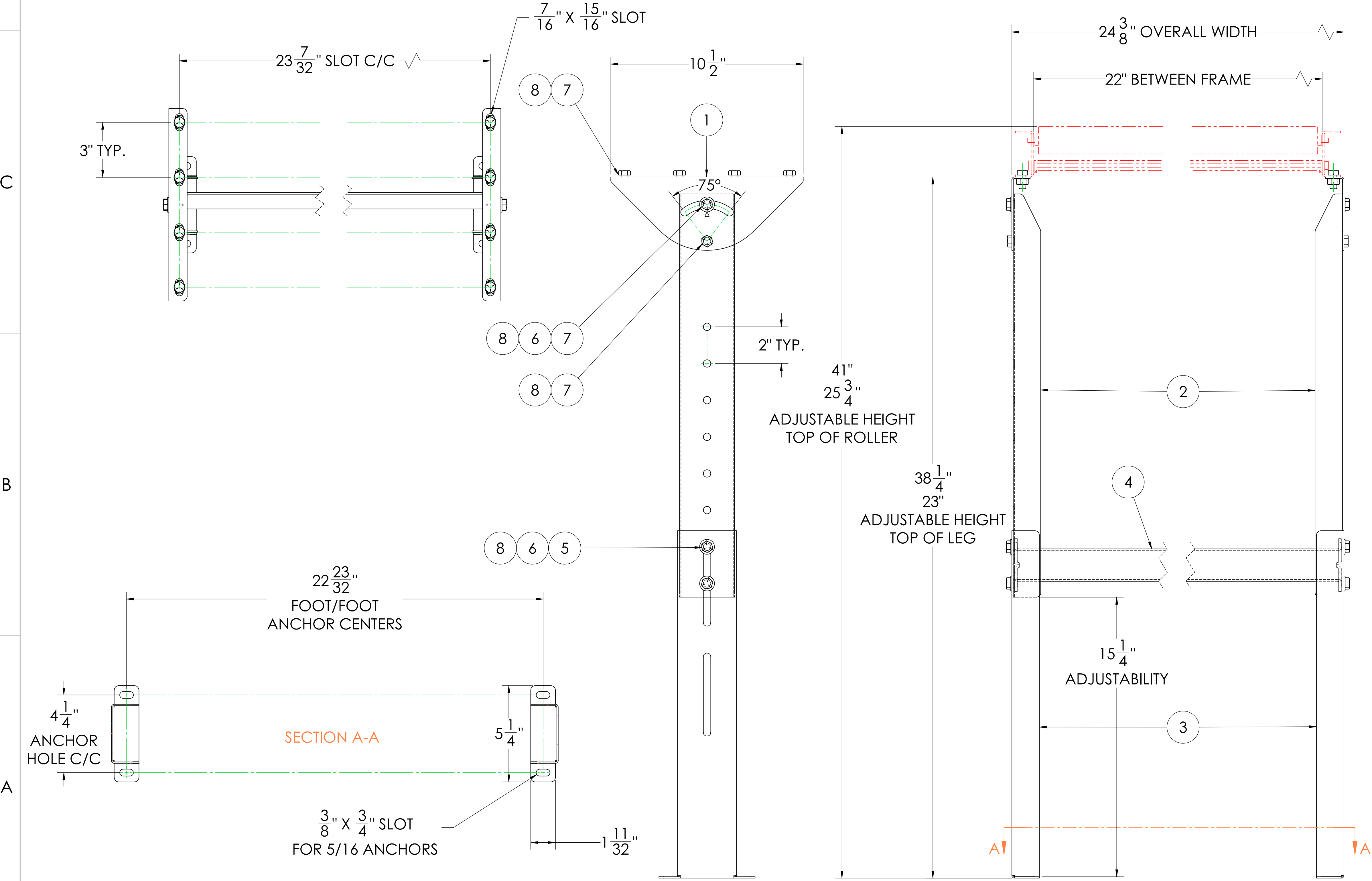
REVISIONS				
REV.	DESCRIPTION	BY	APPROVED	DATE
0	RELEASE FOR MARKETING	TJH	TJH	12/21/2022

D

C

B

A




D

C

B

A



THIRD ANGLE PROJECTION

Ultimation Industries, LLC

15935 Sturgeon St, Roseville, MI 48066

Phone: +1-586-771-1881 ultimationinc.com

DRAWING No.	U10894	UNIT	INCH	SHEET	1	SHEETS	1 of 1	SIZE	D
-------------	--------	------	------	-------	---	--------	--------	------	---

ROLLER STAND LEG SET ASSY FOR LIGHT DUTY GRAVITY CONV. 22"BF, 23" TO 38-1/4" ELV.

PROPRIETARY AND CONFIDENTIAL

THE INFORMATION CONTAINED IN THIS DRAWING IS THE SOLE PROPERTY OF ULTIMATION. ANY REPRODUCTION IN PART OR AS A WHOLE WITHOUT THE WRITTEN PERMISSION OF ULTIMATION IS PROHIBITED.

SCALE

1:3