

# ILLUSTRATED PARTS CATALOG

Designs, materials, weights, specifications, and dimensions for equipment or replacement parts are subject to change without notice.

## BUNN-O-MATIC CORPORATION

POST OFFICE BOX 3227

SPRINGFIELD, ILLINOIS 62708-3227

PHONE: (217) 529-6601 FAX: (217) 529-6644

[www.bunn.com](http://www.bunn.com)

To ensure you have the latest revision of the Operating Manual, Illustrated Parts Catalog, Programming Manual, or Service Manual, please visit the Bunn-O-Matic website, at [www.bunn.com](http://www.bunn.com). This is absolutely FREE, and the quickest way to obtain the latest catalog and manual updates. For Technical Service, contact Bunn-O-Matic Corporation at 1-800-286-6070.

## BUNN-O-MATIC COMMERCIAL PRODUCT WARRANTY

Bunn-O-Matic Corp. ("BUNN") warrants equipment manufactured by it as follows:

- 1) Airpots, thermal carafes, decanters, GPR servers, iced tea/coffee dispensers, MCR/MCP/MCA single cup brewers, thermal servers and ThermoFresh® servers (mechanical and digital) 1 year parts and 1 year labor.
- 2) All other equipment - 2 years parts and 1 year labor plus added warranties as specified below:
  - a) Electronic circuit and/or control boards - parts and labor for 3 years.
  - b) Compressors on refrigeration equipment - 5 years parts and 1 year labor.
  - c) Grinding burrs on coffee grinding equipment to grind coffee to meet original factory screen sieve analysis - parts and labor for 4 years or 40,000 pounds of coffee, whichever comes first.

These warranty periods run from the date of installation BUNN warrants that the equipment manufactured by it will be commercially free of defects in material and workmanship existing at the time of manufacture and appearing within the applicable warranty period. This warranty does not apply to any equipment, component or part that was not manufactured by BUNN or that, in BUNN's judgment, has been affected by misuse, neglect, alteration, improper installation or operation, improper maintenance or repair, non periodic cleaning and descaling, equipment failures related to poor water quality, damage or casualty. In addition, the warranty does not apply to replacement of items subject to normal use including but not limited to user replaceable parts such as seals and gaskets. This warranty is conditioned on the Buyer 1) giving BUNN prompt notice of any claim to be made under this warranty by telephone at (217) 529-6601 or by writing to Post Office Box 3227, Springfield, Illinois 62708-3227; 2) if requested by BUNN, shipping the defective equipment prepaid to an authorized BUNN service location; and 3) receiving prior authorization from BUNN that the defective equipment is under warranty.

**THE FOREGOING WARRANTY IS EXCLUSIVE AND IS IN LIEU OF ANY OTHER WARRANTY, WRITTEN OR ORAL, EXPRESS OR IMPLIED, INCLUDING, BUT NOT LIMITED TO, ANY IMPLIED WARRANTY OF EITHER MERCHANTABILITY OR FITNESS FOR A PARTICULAR PURPOSE.** The agents, dealers or employees of BUNN are not authorized to make modifications to this warranty or to make additional warranties that are binding on BUNN. Accordingly, statements by such individuals, whether oral or written, do not constitute warranties and should not be relied upon.

If BUNN determines in its sole discretion that the equipment does not conform to the warranty, BUNN, at its exclusive option while the equipment is under warranty, shall either 1) provide at no charge replacement parts and/or labor (during the applicable parts and labor warranty periods specified above) to repair the defective components, provided that this repair is done by a BUNN Authorized Service Representative; or 2) shall replace the equipment or refund the purchase price for the equipment.

**THE BUYER'S REMEDY AGAINST BUNN FOR THE BREACH OF ANY OBLIGATION ARISING OUT OF THE SALE OF THIS EQUIPMENT, WHETHER DERIVED FROM WARRANTY OR OTHERWISE, SHALL BE LIMITED, AT BUNN'S SOLE OPTION AS SPECIFIED HEREIN, TO REPAIR, REPLACEMENT OR REFUND.**

In no event shall BUNN be liable for any other damage or loss, including, but not limited to, lost profits, lost sales, loss of use of equipment, claims of Buyer's customers, cost of capital, cost of down time, cost of substitute equipment, facilities or services, or any other special, incidental or consequential damages.

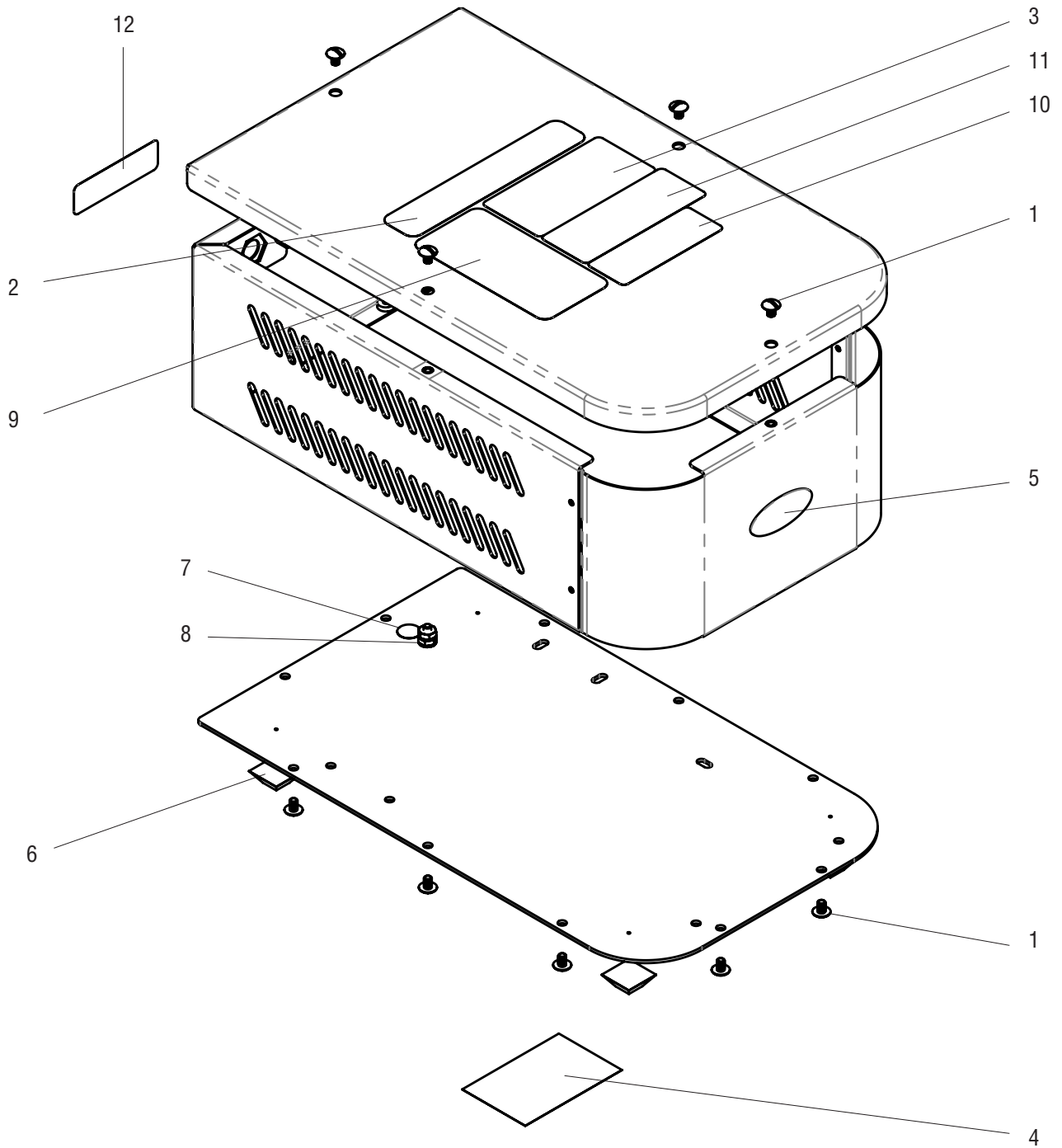
392, A Partner You Can Count On, Air Infusion, AutoPOD, AXIOM, BrewLOGIC, BrewMETER, Brew Better Not Bitter, BrewWISE, BrewWIZARD, BUNN Espresso, BUNN Family Gourmet, BUNN Gourmet, BUNN Pour-O-Matic, BUNN, BUNN with the stylized red line, BUNNlink, Bunn-O-Matic, Bunn-O-Matic, BUNNserve, BUNNSERVE with the stylized wrench design, Cool Froth, DBC, Dr. Brew stylized Dr. design, Dual, Easy Pour, EasyClear, EasyGard, FlavorGard, Gourmet Ice, Gourmet Juice, High Intensity, iMIX, Infusion Series, Intellisteam, My Café, Phase Brew, PowerLogic, Quality Beverage Equipment Worldwide, Respect Earth, Respect Earth with the stylized leaf and coffee cherry design, Safety-Fresh, savemycoffee.com, Scale-Pro, Silver Series, Single, Smart Funnel, Smart Hopper, SmartWAVE, Soft Heat, SplashGard, The Mark of Quality in Beverage Equipment Worldwide, ThermoFresh, Titan, trifacta, TRIFECTA (stylized logo), Velocity Brew, Air Brew, Beverage Bar Creator, Beverage Profit Calculator, Brew better, not bitter., Build-A-Drink, BUNNSource, Coffee At Its Best, Cyclonic Heating System, Daypart, Digital Brewer Control, Element, Milk Texturing Fusion, Nothing Brews Like a BUNN, Picture Prompted Cleaning, Pouring Profits, Signature Series, Sure Tamp, Tea At Its Best, The Horizontal Red Line, Ultra are either trademarks or registered trademarks of Bunn-O-Matic Corporation. The commercial trifacta® brewer housing configuration is a trademark of Bunn-O-Matic Corporation.

TABLE OF CONTENTS

External ..... 4

Internal..... 6

Numerical Index..... 8



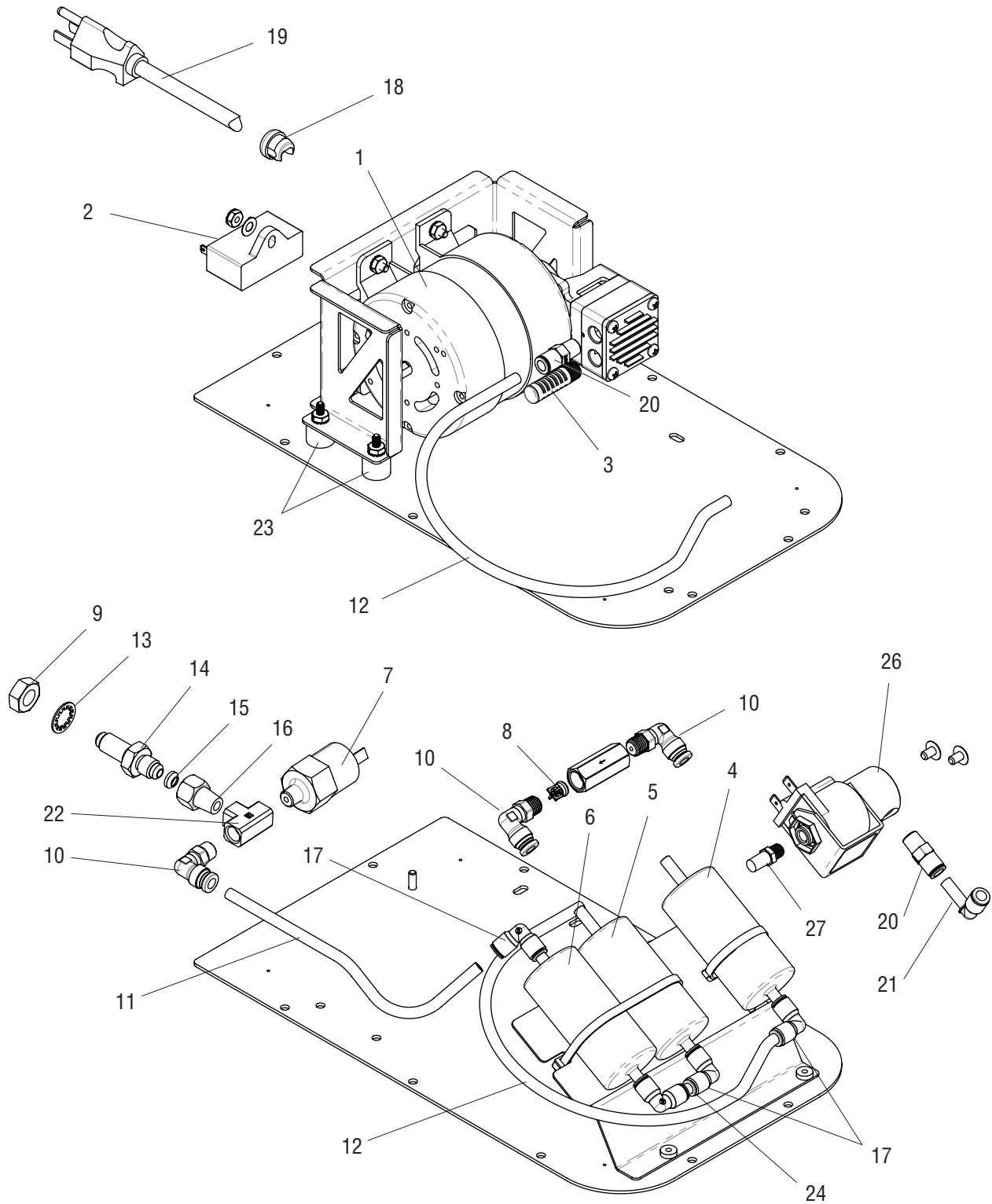
## EXTERNAL

ITEM	PART NO.	QTY.	DESCRIPTION
1	01311.0004	14	Screw, Truss Head, BLK #8-32 x .25"
2	37881.0002	1	Decal, Warning No Serviceable Parts
3	27442.0000	1	Decal, Warning Moving Parts
4	00986.0002	1	Decal, Warning Electrical
5	35009.0000	1	Decal, Bunn
6	02547.0001	4	Foot
7	00824.0002	1	Decal, Ground
8	00970.0000	2	Nut, Keps 8-32
9	55884.0000	1	Decal, Filter Install/Change
10	56361.0000	1	Decal, Caution, Risk of Bursting
11	56362.0000	1	Decal, Warning, Electric Shock
12	56363.0000	1	Decal, Motor Spec.

**The following items are not illustrated**

13	55727.1000	1	Hose Assembly, External
----	------------	---	-------------------------

\* Indicates the part number listed is for reference only. See DESCRIPTION for possible service replacement.



## INTERNAL

ITEM	PART NO.	QTY.	DESCRIPTION
1	55631.1002 00970.0000	1 4	Air Pump (Includes Capacitor) Nut, Hex #8-32
2	55633.0000 00970.0000 01522.0000	1 1 1	Capacitor Nut, Hex #8-32 Washer
3	55622.0000	1	Air Intake Filter
4	55641.0000	1	Filter, Air/Water Separation
5	55642.0000	1	Filter, Air Dryer
6	55643.0000	1	Filter, Air/Carbon
7	55882.0001	1	Pressure Switch
8	50855.0000	1	Check Valve
9	00463.0000	1	Nut, Hex .438"-20
10	46850.0000	3	Fitting
11		1	Tubing 8.0" (Order item 28)
12		1	Tubing 14.0" (Order item 28)
13		1	Lock Washer
14	00459.0000	1	Bulkhead Fitting
15	33149.0001	1	Gasket, Nylon
16	24613.0001	1	Adaptor
17	47633.0000	4	Elbow
18	00707.0000	1	Bushing, Strain Relief
19	20630.0024	1	Power Cord
20	46961.0000	2	Fitting
21	46059.0000	1	Elbow
22	24599.0001	1	Tee
23	55628.0000	4	Damper
24		1	Tubing 1.25" (Order item 28)
25	56333.0000	1	Kit, Filters (Includes 3-6)
26	55638.0001 01326.0002	1 2	Solenoid Valve Screw, TRH #10-32 x .312"
27	56222.0000	1	Muffler

**The following items are not illustrated**

28	46556.1000 46556.1001 46556.1002	- - -	Tubing 1' Tubing 3' Tubing 10'
29	55627.0002	1	Wiring Harness
30	44023.0001	-	Lube

\* Indicates the part number listed is for reference only. See DESCRIPTION for possible service replacement.



## NUMERICAL INDEX

NGM

PART NO.	PAGE NO.	
00459.0000.....	7	56361.0000..... 5
00463.0000.....	7	56362.0000..... 5
00707.0000.....	7	56363.0000..... 5
00824.0002.....	5	
00970.0000.....	5,7	
00986.0002.....	5	
01311.0004.....	5	
01326.0002.....	7	
01522.0000.....	7	
01532.0000.....	7	
02547.0001.....	5	
20630.0024.....	7	
24599.0001.....	7	
24613.0001.....	7	
27442.0000.....	5	
33149.0001.....	7	
35009.0000.....	5	
37881.0002.....	5	
44023.0001.....	7	
46059.0000.....	7	
46556.0001.....	7	
46556.0010.....	7	
46556.0015.....	7	
46556.1000.....	7	
46556.1001.....	7	
46556.1002.....	7	
46850.0000.....	7	
46961.0000.....	7	
47633.0000.....	7	
50855.0000.....	7	
55622.0000.....	7	
55627.0002.....	7	
55628.0000.....	7	
55631.1002.....	7	
55633.0000.....	7	
55638.0001.....	7	
55641.0000.....	7	
55642.0000.....	7	
55643.0000.....	7	
55727.1000.....	5	
55882.0001.....	7	
55884.0000.....	5	
56222.0000.....	7	
56333.0000.....	7	