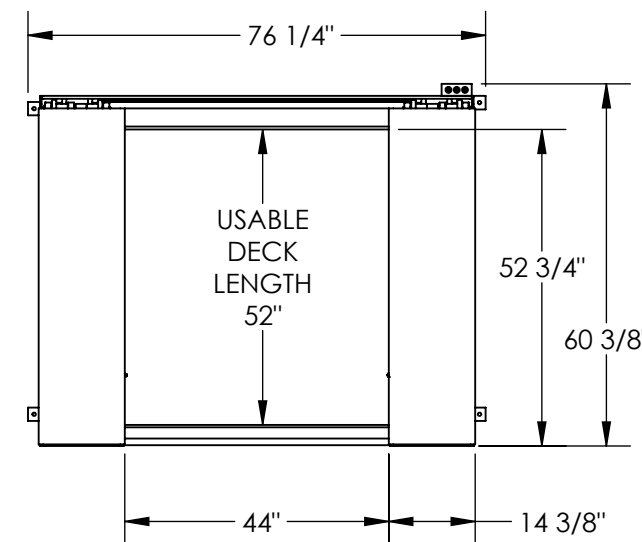
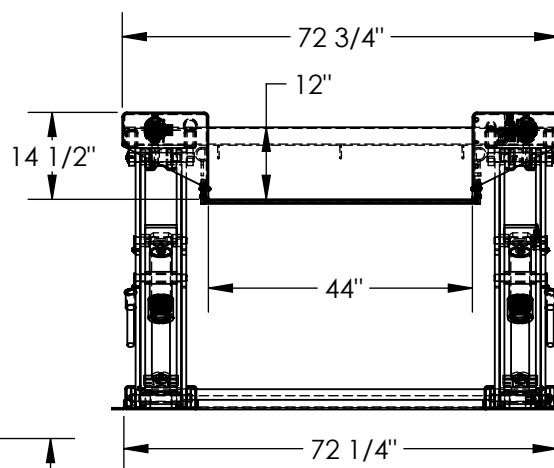
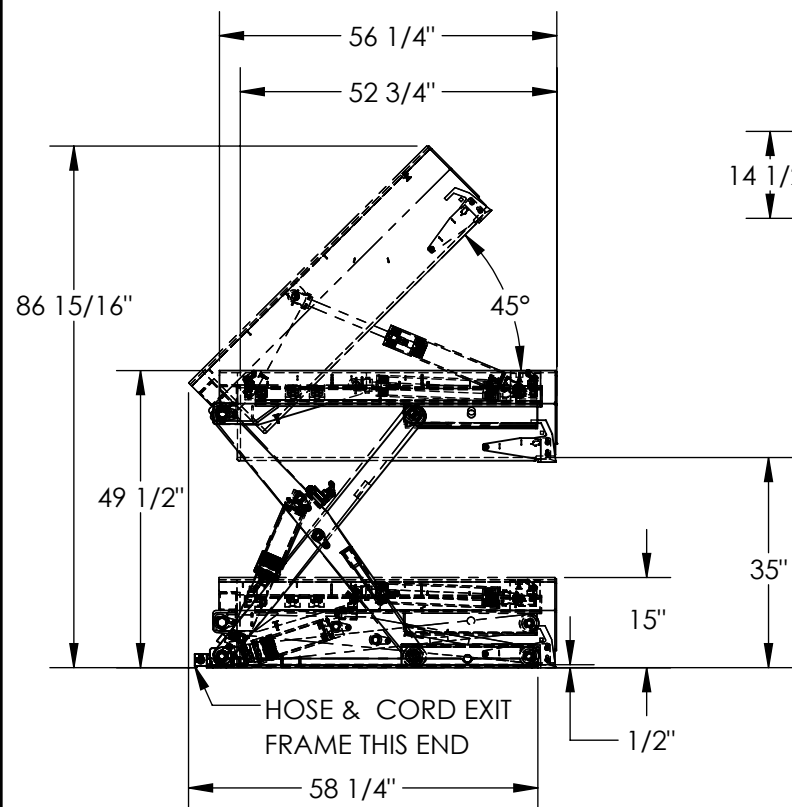


# SCISSOR GROUND LIFT AND TILT - EHLTGT-4452-4-36

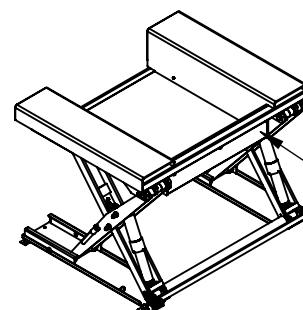
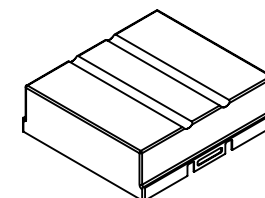
APPROX WEIGHT: 2072 lbs.  
DOES NOT INCLUDE WEIGHT OF POWER OR PACKAGING!!!

\*\*\* ANY ADDITIONS, DELETIONS, OR OMISSIONS MUST BE CORRECTED ON THIS DRAWING AS THIS DRAWING WILL BE CONSIDERED ALL INCLUSIVE \*\*\*

ALL GRAPHICS PROVIDED ARE FOR REFERENCE ONLY. IF CERTAIN DIMENSIONS ARE CRITICAL PLEASE VERIFY THOSE DIMENSIONS WITH YOUR SALESPERSON



REMOTE POWER UNIT  
24 1/2" x 22 1/2" x 7 1/2" (L x W x H)  
WITH 8' HOSE & CABLE



12" HIGH BACK PLATE

DIMENSION TOLERANCE  $\pm 1/4"$

## STANDARD FEATURES

MODEL NUMBER IS EHLTGT-4452-4-36

OVERALL WIDTH IS 72 3/4"

USABLE WIDTH IS 44"

OVERALL LENGTH IS 60 3/8"

USABLE LENGTH IS 52"

OVERALL HEIGHT IS 49 1/2"

PLATFORM RAISED HEIGHT IS 35"

PLATFORM LOWERED HEIGHT IS 1 1/2"

MAX CAPACITY IS 4,000 LBS.

DURABLE LIQUID PAINT BLUE FINISH

CONTROL IS HANDHELD, 4 BUTTON, NEMA 4

PENDANT WITH MINIMUM 8' USABLE COIL CORD

EXTERNAL POWER UNIT

## PLEASE CIRCLE SPECIFICATIONS:

POWER	AC	DC (12V)	AIR/OIL
MOTOR VOLTAGE	115	208	230 460
DEDICATED CIRCUIT REQUIRED 60Hz			
MOTOR PHASE	SINGLE	THREE	
CONTROL	HAND	FOOT	

APPROVAL

I, THE UNDERSIGNED, AGREE THAT THE PRODUCT AS REPRESENTED SATISFIES DESIGN AND DIMENSION REQUIREMENTS. I ALSO ACKNOWLEDGE MY DUTY TO CONFIRM PRODUCT AND INSTALLATION COMPLIANCE WITH ALL APPLICABLE FEDERAL, STATE AND LOCAL REGULATIONS AND STANDARDS.

**UNITS REQUIRING APPROVAL DRAWINGS OR MODIFIED ARE NON-RETURNABLE**

[ ] As drawn [ ] As marked

Signed: \_\_\_\_\_ Date: \_\_\_\_\_

Printed Name: \_\_\_\_\_

LEAD TIME WILL START UPON RECEIPT OF SIGNED APPROVAL DRAWING

DISTRIBUTOR'S NAME:

VESTIL MANUFACTURING

DRAWN BY:

ABR

DATE:

8/2/19

REFERENCE:

X

SCALE: 1:32

QUOTED LEAD TIME:

X

QUOTE #

X

P.O.#

X

W.O.#

X

SALES:

X

FILE NAME:

04-007-105

## SPECIAL FEATURES

NONE