

TABLE		
PART NO.	P/N REV	P/N ECN
B4517901	D	18755

- NOTES:
1. REMOVE ALL BURRS AND SHARP EDGES
 2. COMPLY WITH RoHS
 3. WELD ALL PLACES WHERE WIRES INTERSECT
 4. ALL WIRE TO BE $\phi .225$ UNLESS OTHERWISE SPECIFIED
 5. ALL BEND RADII ARE TO BE MINIMUM ALLOWABLE
 6. RODS SHOWN ARE TO INTERSECT AND ARE TO BE WELDED TOGETHER

REV.	ECN	DRAWN BY	DATE	CHK	APPD
D	18755	S. MCGUIRE	6/11/2019		
C	18447	J. Finnie	12/19/2018	IV	IV
B	18120	J. Finnie	5/14/2018	MRF	MRF
A	17975	J. Finnie	2/1/2018	SJG	SJG

REVISIONS

UNLESS OTHERWISE SPECIFIED DIMENSIONS ARE IN INCHES AND TOLERANCES ARE:
 .XX \pm .03
 .XXX \pm .015
 ANGLE \pm .5°

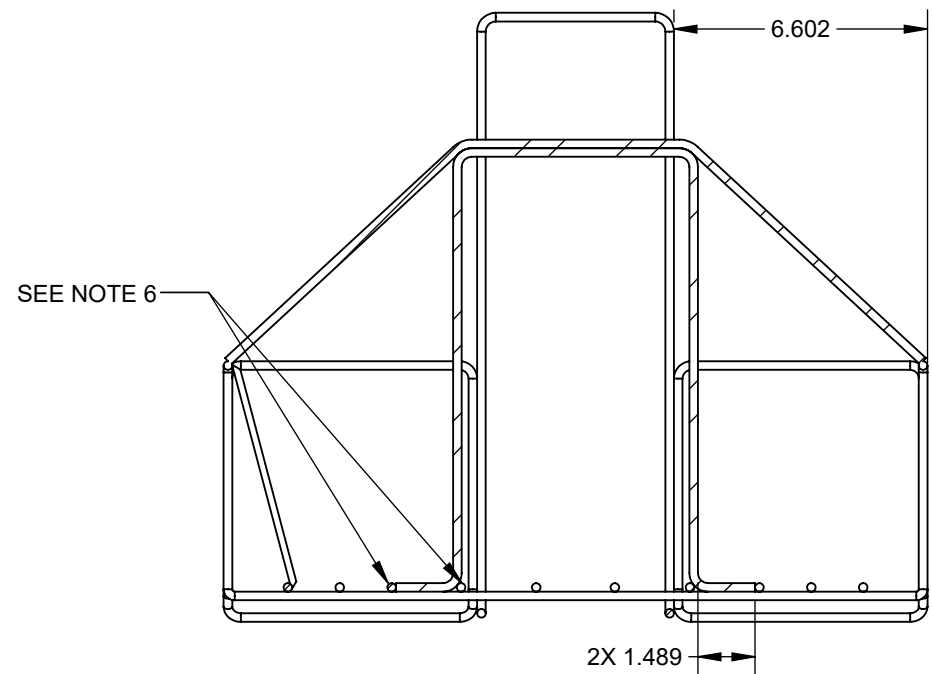
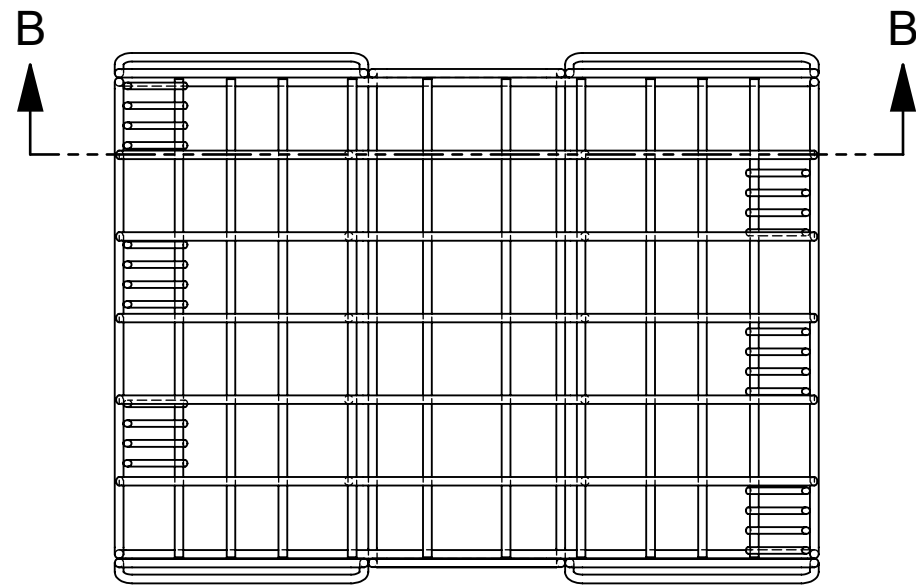
PROPRIETARY AND CONFIDENTIAL THE INFORMATION CONTAINED IN THIS DRAWING IS THE SOLE PROPERTY OF PITCO FRIALATOR INC. ANY REPRODUCTION IN PART OR AS A WHOLE WITHOUT THE WRITTEN PERMISSION OF PITCO FRIALATOR INC. IS PROHIBITED.

Pitco **MagKitch'n** **ANETS** **PERFECT COMPANY**
 A DIVISION OF THE MIDDLEBY CORPORATION, P.O. BOX 501, CONCORD, NH 03302-0501

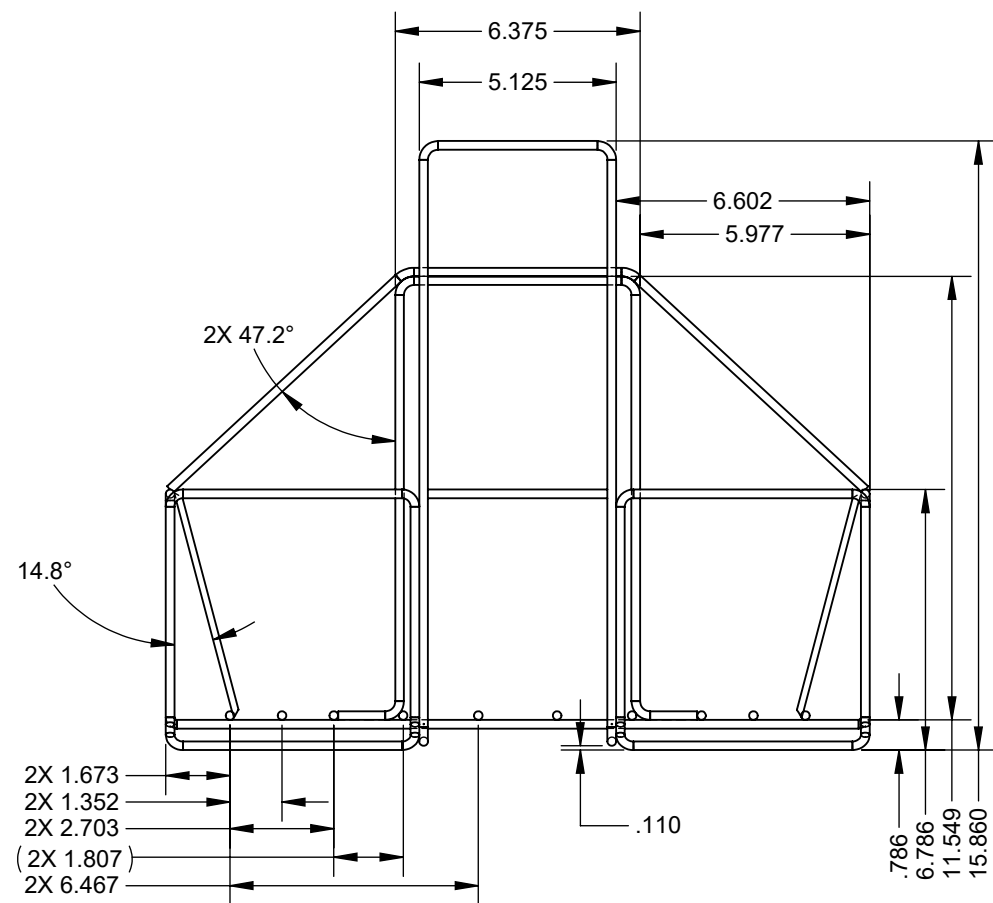
TITLE: **WIRE GOODS, 6 BAG**

NEXT ASSY:
 USED ON: SRTE, STRG
 MATERIAL: 304 STAINLESS STEEL
 FINISH: ELECTROPOLISH

PART NO: SEE TABLE
 SCALE: 1:5
 SIZE: **B**
 DWG NO: B45-179
 REV: **D**



SECTION B-B
SCALE 1 : 5



NOTES:

1. REMOVE ALL BURRS AND SHARP EDGES
2. COMPLY WITH RoHS
3. WELD ALL PLACES WHERE WIRES INTERSECT
4. ALL WIRE TO BE ϕ .225 UNLESS OTHERWISE SPECIFIED
5. ALL BEND RADII ARE TO BE MINIMUM ALLOWABLE
6. RODS SHOWN ARE TO INTERSECT AND ARE TO BE WELDED TOGETHER

PART NO: SEE TABLE	SIZE B	DWG NO: B45-179	REV: D
SCALE: 1:8	SHEET: 2 OF 2		