

**-SPECIFICATION-  
MODEL: QC060877WLF-O**

**Standard Features and Specs**

- \* 4" thick NAKS-XPS4 insulation providing R-29 for coolers and R-32 for freezers
  - \* 50 year thermal warranty on insulation
  - \* 15 year panel warranty
  - \* 1 year parts warranty
- Standard Features and Specs
- \* 30" x 76" Left hinged flush door

- \* 2 super cam-rise spring assisted hinged
- \* Interior safety lock release handle
- \* Spring actuated door closer
- \* Digital LED thermometer with pilot light switch
- \* Vapor-proof light centered on interior jamb
- \* 26 guage Acrylume, corrosion resistant, stucco embossed on all interior and exterior surfaces.
- \* Smooth aluminum interior floor rated at 600 lb/sq-ft of uniformly distributed load
- \* Walk-in cooler door electrical 115/1/60, 1.0 amp
- \* 30" x 76" Left hinged flush door
- \* Total shipping weight: 1014 lb (1 pallets)

**Refrigeration:**

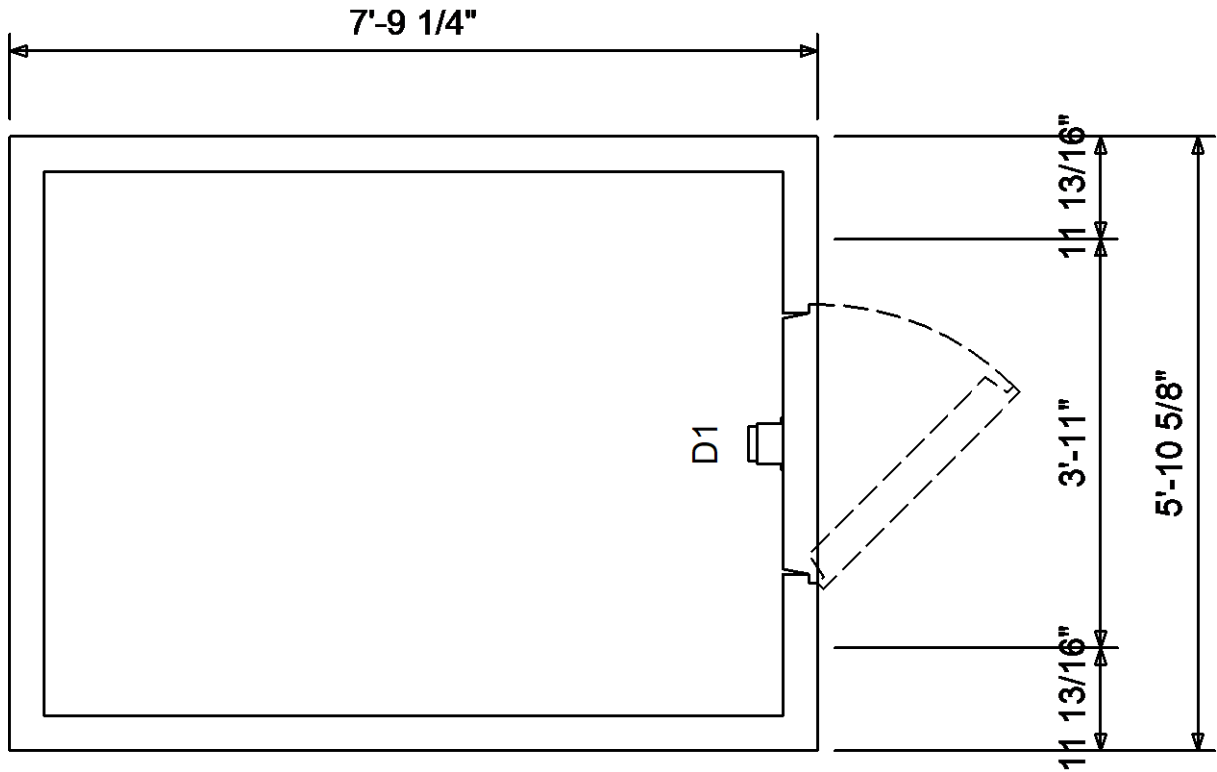
By others

**Notes:**

Customer Approval:

\_\_\_\_\_

Quick Ship Outdoor Walk-In, 6' W x 8' L x 7'-7" H Cooler, With Aluminum Floor, Door Centered on Width Side, LHH  
Door



Quote #: Revision:

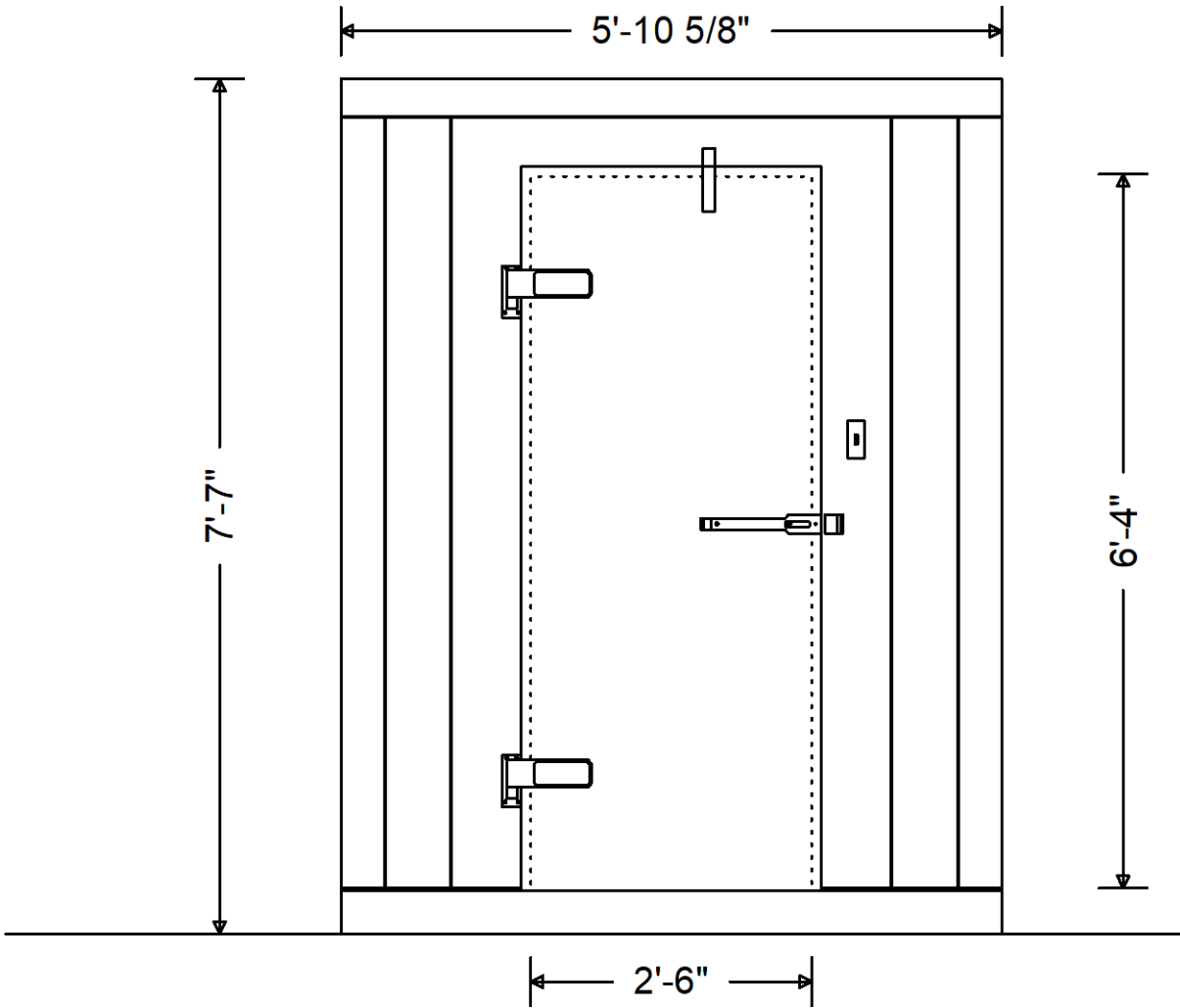
Project: 6 x 8 x 7'7 Outdoor Cooler With  
Floor (Width Side)

Date: 09/15/2020

Page 1 of 3

**-SPECIFICATION-Continued**

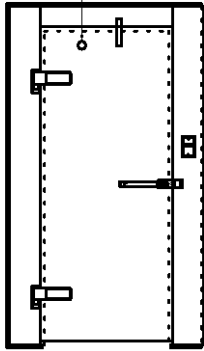
- \* Refrigeration is sized based on holding use, no product load was considered. For product load consult factory
- \* Allow a minimum of 2" clearance around all sides of the walk-in for proper air circulation
- \* Floor must be level for proper walk-in installation
- \* Walk-in shipment lead time is subject to terms and conditions
- \* Specifications subject to change without notice



Customer Approval: \_\_\_\_\_

Quote #: Revision:	Project: 6 x 8 x 7'7 Outdoor Cooler With Floor (Width Side)	Date: 09/15/2020	
	Page 2 of 3		

See customer label note



D1

Quote #: Revision:	Project: 6 x 8 x 7'7 Outdoor Cooler With Floor (Width Side)	Date: 09/15/2020	
	Page 3 of 3		