



18 Gauge Detachable Drainboard Installation Instructions

Pieces include:

- 2 tubing braces
- 2 brackets
- 1 drain board



Installed drain board



1. Unscrew brackets and slide them to the top of the sink legs.



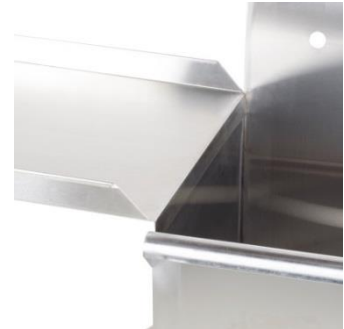
2. Screw drainboard tubing braces onto brackets.



3. Tighten brackets to prevent them from sliding down the sink legs.



4. Place drainboard lip over the sink edge.



5. Lift unattached end of tubing braces to drainboard, matching up the hole in each of the braces with the screws on the back of the drainboard.



6. Screw on the caps to fix tubing braces to drainboard.



See specification sheet for additional information.