

Deep Depth Electric Convection Ovens



351FEC100DDD, 351FEC100DDC, 351FEC200DDDK, 351FEC200DDCK

REVISED 02/2024



Contents

| | |
|--|----|
| Safety Precautions | 3 |
| Whole Assembly Parts List | 4 |
| Whole Assembly Diagram | 5 |
| Motor Assembly Parts List | 6 |
| Motor Assembly Diagram | 7 |
| Door Parts List | 8 |
| Door Assembly Diagram | 9 |
| Control Panel Parts List | 10 |
| Control Panel Diagram | 11 |
| Electrical Components Parts List | 12 |
| Electrical Components Diagram | 13 |
| 1 Phase Wiring Diagram | 14 |
| 3 Phase Wiring Diagram | 15 |



Conforms to UL STD 197
Conforms to CSA STD C22.2 NO.109
Conforms to NSF/ANSI std. 4



Safety Precautions

CAUTION:

- Failure to comply with the following operation instructions could lead to potential hazards and/or unsafe practice and could result in injury and damage to product and property.

NOTICE:

- Local codes regarding installation vary greatly from one area to another. The National Fire Protection Association, Inc., states in its NFPA96 latest edition that local codes are "Authority Having Jurisdiction" when it comes to requirements for installation of equipment. Therefore, installation should comply with all local codes.
- This product is intended for commercial use only. Not for residential use.

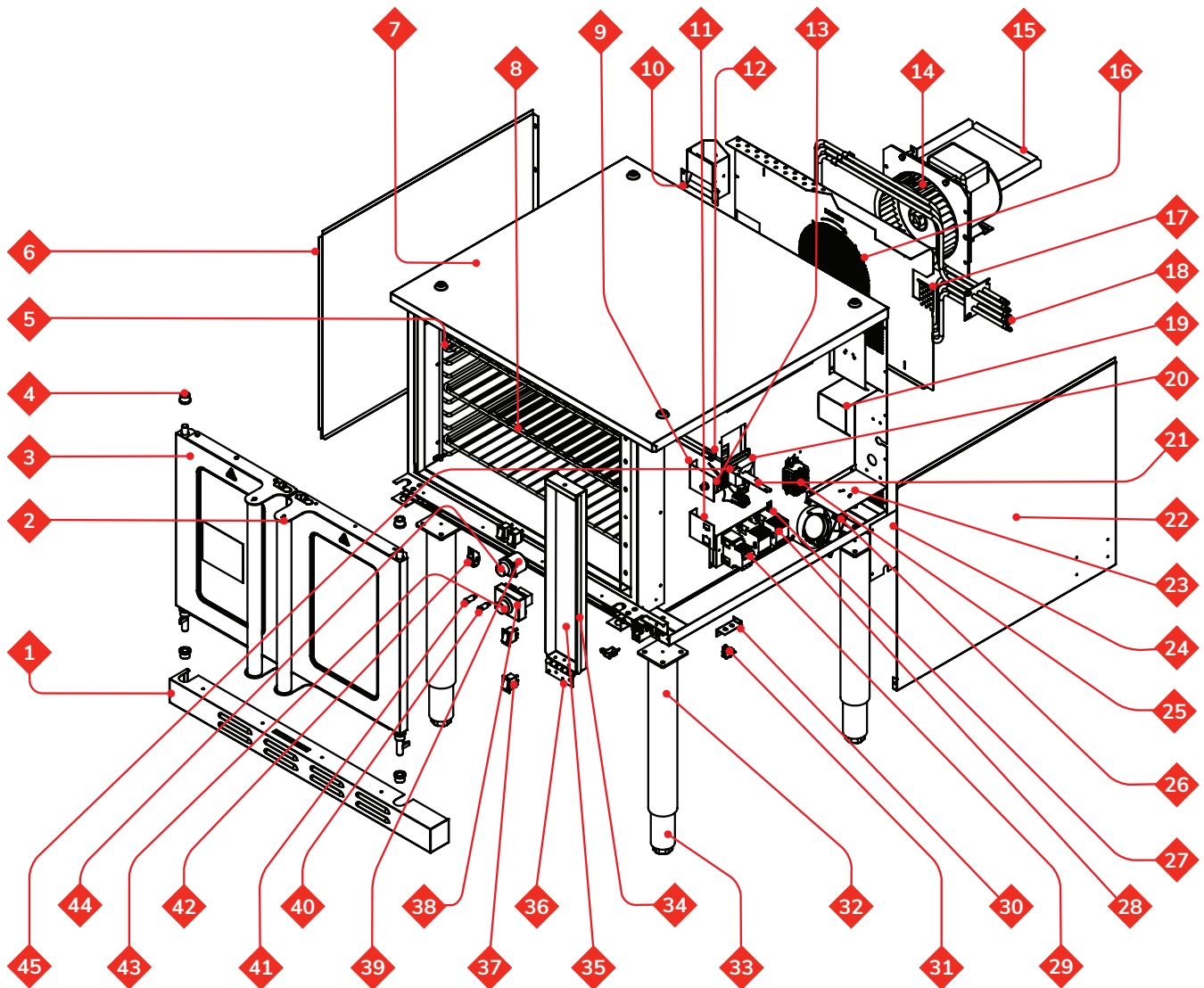
WARNING:

- Do not store or use gasoline or other flammable vapors and liquids in the vicinity of this or any other equipment.
- Improper installation, adjustment, alteration, service, or maintenance could lead to property damage, injury, or death. Read the installation, operating, and maintenance instructions thoroughly before installing or servicing CPG equipment. This manual must be retained for future reference.
- A certified and insured food service equipment technician must handle all maintenance and repairs.

Whole Assembly Parts List

| Part # | CPG Item # | Description | QTY |
|--------|--------------|-----------------------------------|-----|
| 1 | — | Lower Front Cover Plate | 1 |
| 2 | 35117046018 | Left Door Assembly | 1 |
| 3 | 35117046017 | Right Door Assembly | 1 |
| 4 | 351201928 | Door Shaft Bush | 4 |
| 5 | 351110732 | Rack Guide | 2 |
| 6 | — | Left Side Panel | 1 |
| 7 | — | Chamber Top Cover | 1 |
| 8 | 351110733 | Oven Rack | 3 |
| 9 | — | Thermostat Fixed Plate | 1 |
| 10 | — | Oven Flue | 1 |
| 11 | — | Cable Clip Fixed Plate | 1 |
| 12 | — | Sensor Cover | 1 |
| 13 | 351030187 | High Limit Thermostat | 1 |
| 14 | — | Motor Assembly | 1 |
| 15 | — | Motor Plate | 1 |
| 16 | — | Fan Guard | 1 |
| 17 | — | Cover Plate | 1 |
| 18a | 351041024 | Heating Element 230V - DDD Models | 1 |
| 18b | 351041056 | Heating Element 208V - DDC Models | 1 |
| 19 | — | Heating Element Baffle Plate | 1 |
| 20 | 351130156 | Cavity Lamp Assembly | 1 |
| 21 | 351170069 | Thermocouple | 1 |
| 22 | — | Right Side Panel | 1 |
| 23 | — | Fan Fixed Plate | 2 |
| 24 | — | Cover Plate | 1 |
| 25 | 351070055 | Terminal Block | 1 |
| 26 | 351010246 | Cooling Fan | 1 |
| 27 | — | Contactors Bracket | 1 |
| 28 | 351090135 | Ac Contactor | 2 |
| 29 | 351030192 | Breaker | 1 |
| 30 | — | Fixed Plate (Micro Switch) | 1 |
| 31 | 351080021 | Micro Switch | 3 |
| 32 | 351090159 | Leg - FEC100 Only | 4 |
| 33 | 351302090088 | Adjustable Foot | 4 |
| 34 | — | Control Panel Assembly | 1 |
| 35 | — | Control Panel | 1 |
| 36 | — | Control Panel Hinge | 1 |
| 37 | 351080141 | Rocker Switch | 4 |
| 38 | 351030208 | Thermostat | 1 |
| 39 | 351120028 | Timer | 1 |
| 40 | 351130021 | Working Indicator Light | 1 |
| 41 | 351130023 | Power Indicator Light | 1 |
| 42 | 351100002 | Buzzer | 1 |
| 43 | 351110438 | Temperature Control Knob | 1 |
| 44 | 351110438 | Timer Control Knob | 1 |
| 45 | 351170069 | Temperature Probe | 1 |

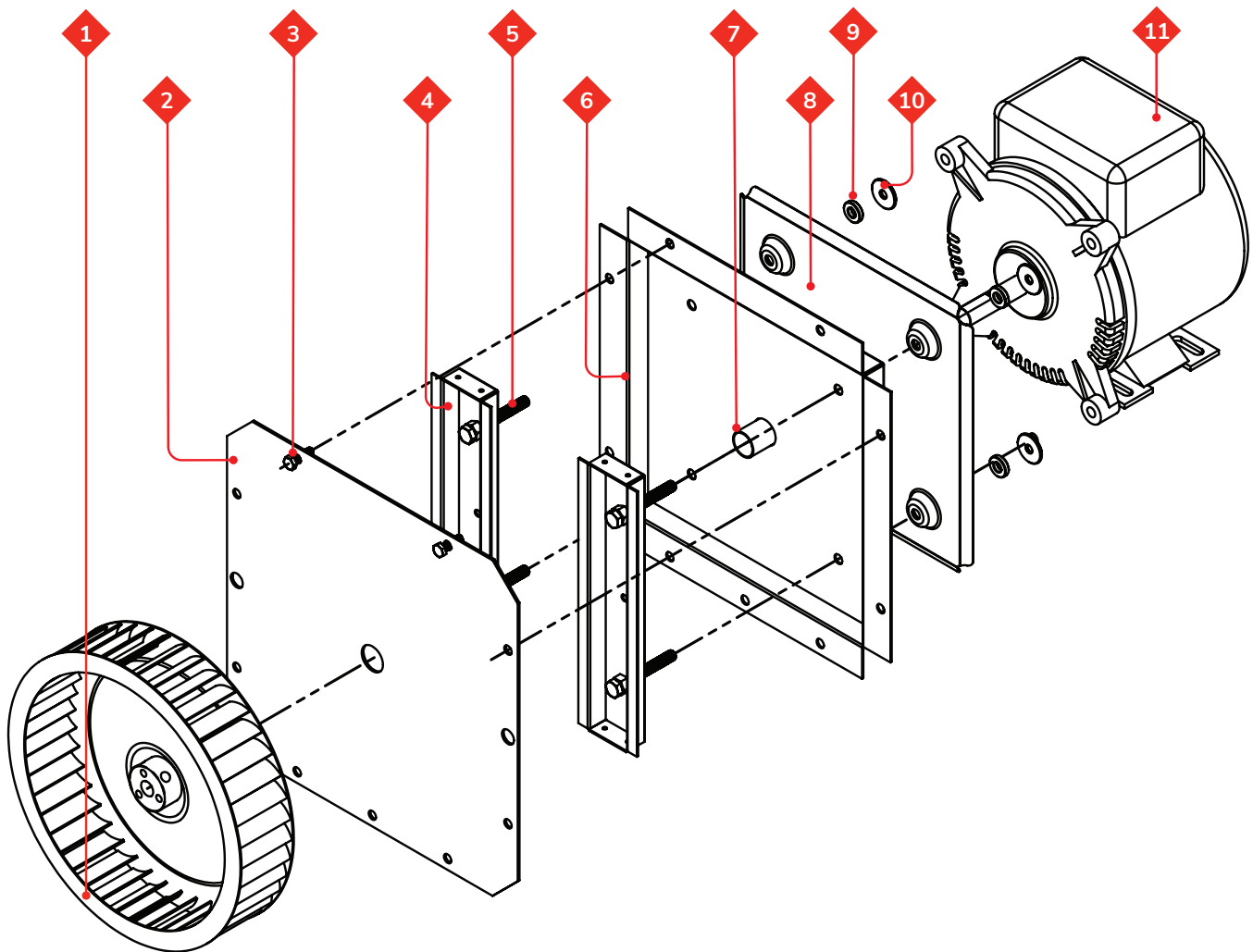
Whole Assembly Diagram



Motor Assembly Parts List

| Part # | CPG Item # | Description | QTY |
|--------|------------|--|-----|
| 1 | 351010263 | Fan Blower | 1 |
| 2 | — | Motor Thermal Baffle Plate 1 | 1 |
| 3 | — | M6*20 Screw | 2 |
| 4 | — | Motor Installation Strengthening Plate | 2 |
| 5 | — | M8*20 Screw | 4 |
| 6 | — | Motor Thermal Baffle Plate 2 | 1 |
| 7 | — | Motor Bushing | 1 |
| 8 | — | Motor Insert Plate | 1 |
| 9 | — | Motor/Blower Hardware | 4 |
| 10 | — | Motor/Blower Hardware | 4 |
| 11 | 351010267 | Motor | 1 |

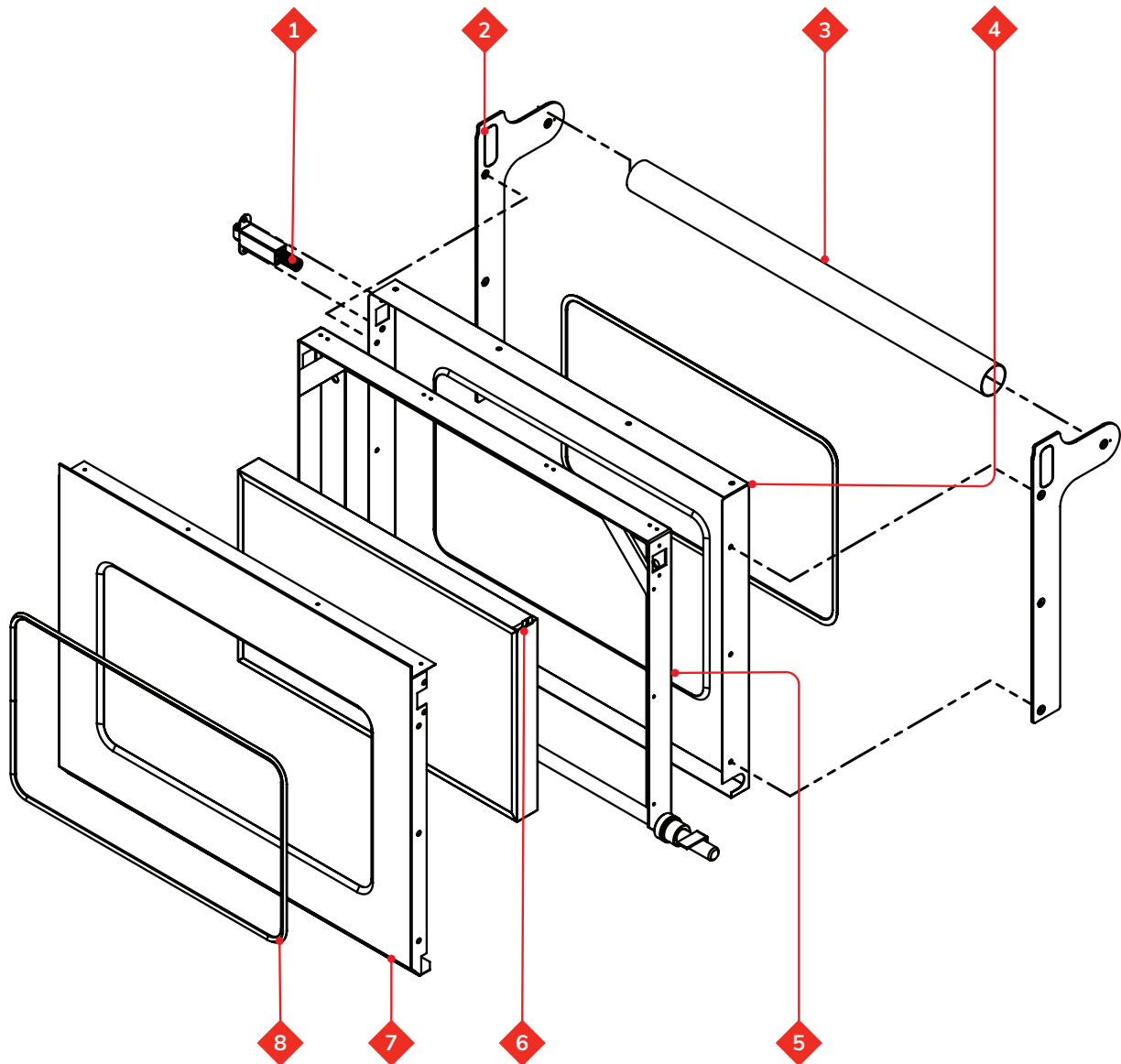
Motor Assembly Diagram



Door Assembly Parts List

| Part # | CPG Item # | Description | QTY |
|--------|-------------|---------------------------|-----|
| 1 | 35165002016 | Door Stopper | 1 |
| 2 | — | Handle Plate | 2 |
| 3 | 351070267 | Door Handle | 1 |
| 4 | — | External Frame | 1 |
| 5 | — | Internal Frame | 1 |
| 6 | — | Door Glass Frame Assembly | 1 |
| 7 | — | Cavity Side Frame | 1 |
| 8 | — | Door Gasket | 2 |

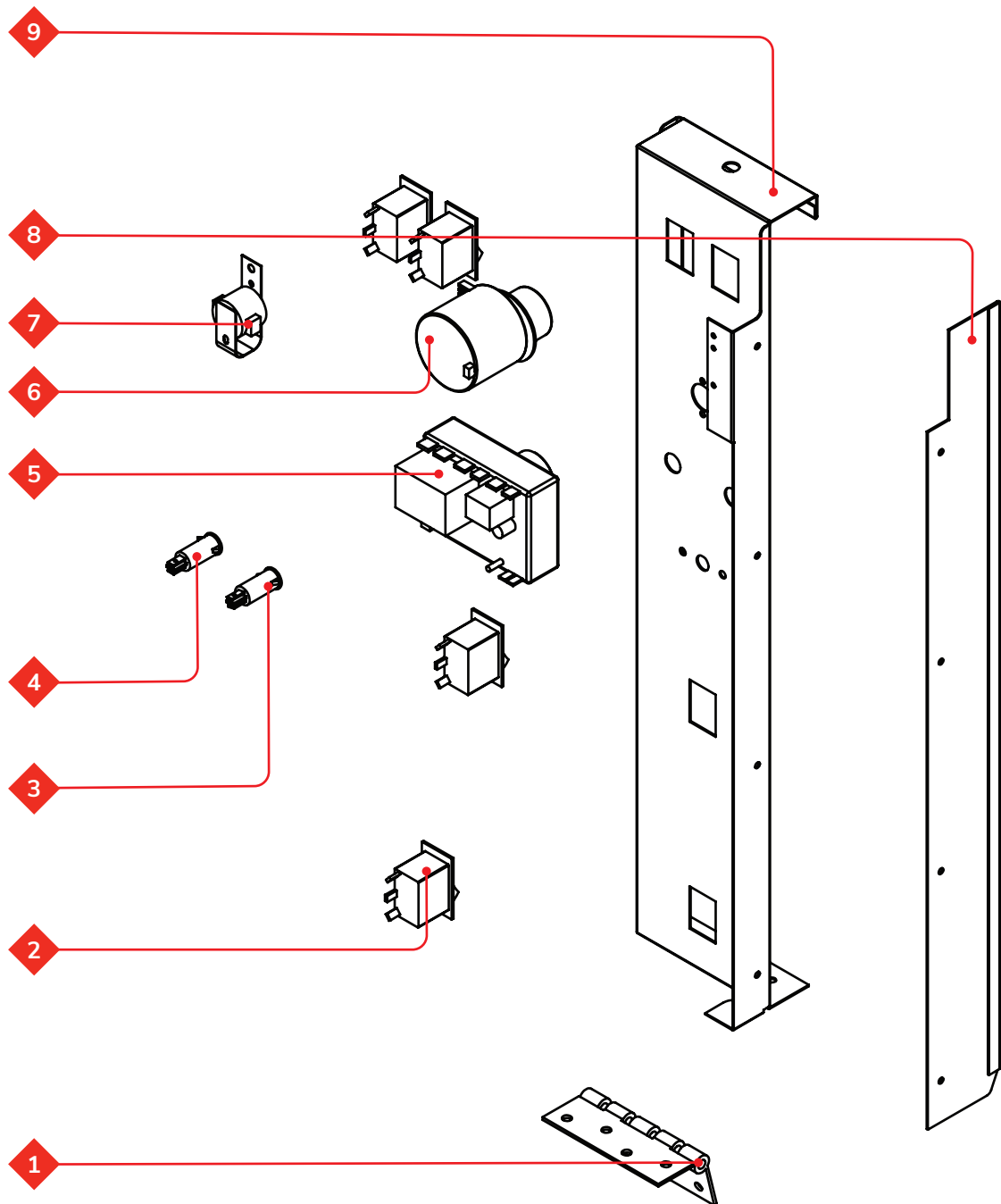
Door Assembly Diagram



Control Panel Parts List

| Part # | CPG Item # | Description | QTY |
|--------|------------|-------------------------|-----|
| 1 | — | Control Panel Hinge | 1 |
| 2 | 351080141 | Rocker Switch | 1 |
| 3 | 351130023 | Power Indicator Light | 1 |
| 4 | 351130021 | Working Indicator Light | 1 |
| 5 | 351030208 | Thermostat | 1 |
| 6 | 351120028 | Timer | 1 |
| 7 | 351100002 | Buzzer | 1 |
| 8 | — | Control Panel Bracket | 1 |
| 9 | — | Control Panel | 1 |

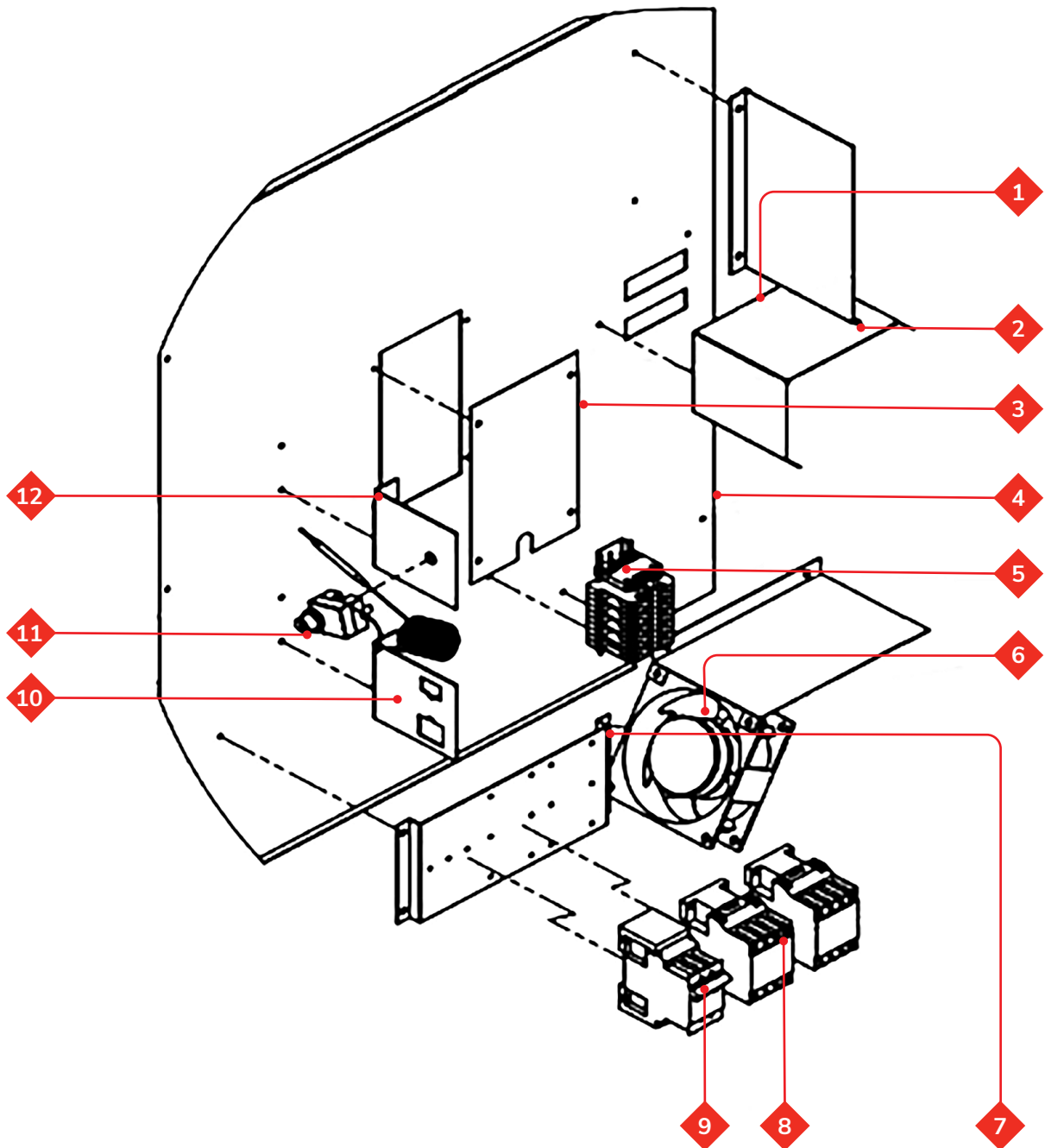
Control Panel Diagram



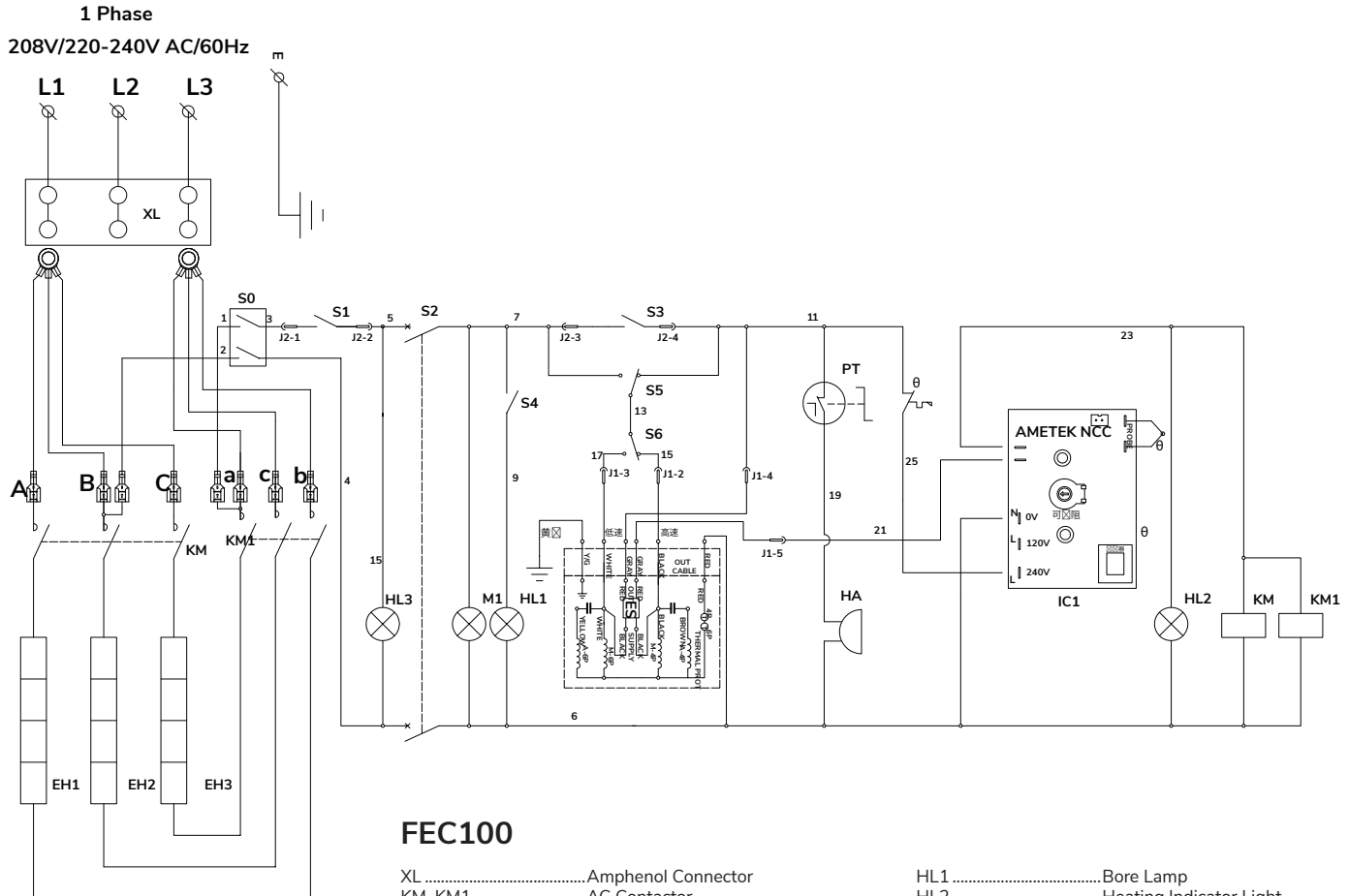
Electrical Components Parts List

| Part # | CPG Item # | Description | QTY |
|--------|------------|---------------------------|-----|
| 1 | — | Water Baffle | 1 |
| 2 | — | Small Fan Fixed Plate | 1 |
| 3 | — | Cover Plate | 1 |
| 4 | — | Right Cover Plate | 1 |
| 5 | 351070055 | Terminal Block | 1 |
| 6 | 351010246 | Cooling Fan | 1 |
| 7 | — | Contactor/Breaker Bracket | 1 |
| 8 | 351090135 | AC Contactor | 2 |
| 9 | 351030192 | Breaker | 1 |
| 10 | — | Wire Clip Fixed Plate | 1 |
| 11 | 351030187 | Highlimit Thermostat | 1 |
| 12 | — | Temp Limiter Fixed Plate | 1 |

Electrical Components Diagram



1 Phase Wiring Diagram

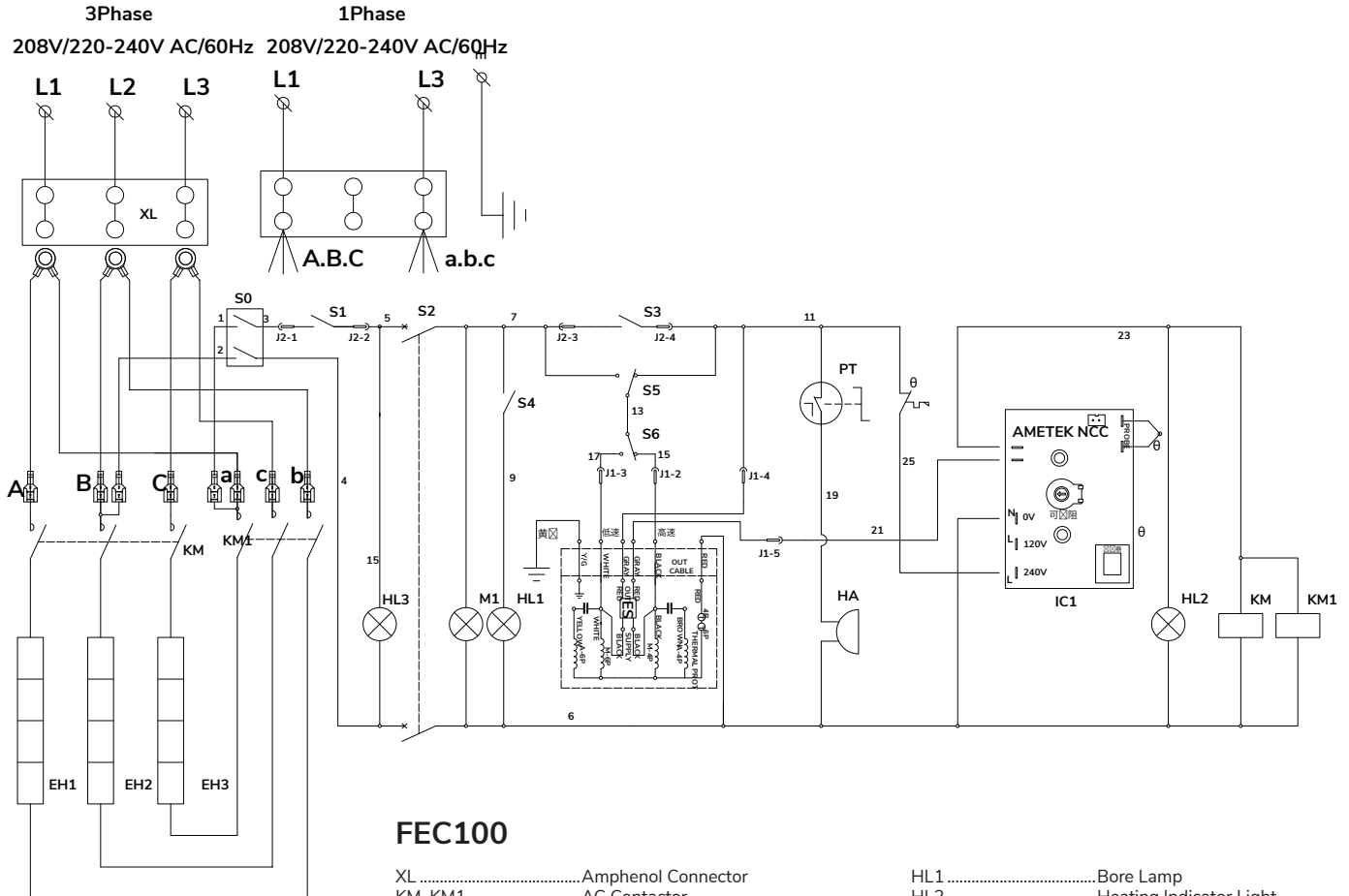


FEC100

- XLAmphenol Connector
- KM, KM1.....AC Contactor
- EH1, EH2, EH3.....Electric Heating Tube
- S0Circuit Breaker
- S1Electric Box Protection Switch
- S2Power Switch
- S3Door Switch
- S4Interior Light Switch
- S5Cool/Cook Switch
- S6High/Low Speed Motor Switch

- HL1Bore Lamp
- HL2Heating Indicator Light
- HL3Power Indicator Light
- MMotor
- PTTimer
- HABuzzer
- ICElectronic Temperature Controller
- θTemperature Limiter
- M1Cooling Fan

3 Phase Wiring Diagram



FEC100

- | | | | |
|---------------------|--------------------------------|-----------|-----------------------------------|
| XL | Amphenol Connector | HL1 | Bore Lamp |
| KM, KM1 | AC Contactor | HL2 | Heating Indicator Light |
| EH1, EH2, EH3 | Electric Heating Tube | HL3 | Power Indicator Light |
| S0 | Circuit Breaker | M | Motor |
| S1 | Electric Box Protection Switch | PT | Timer |
| S2 | Power Switch | HA | Buzzer |
| S3 | Door Switch | IC | Electronic Temperature Controller |
| S4 | Interior Light Switch | θ | Temperature Limiter |
| S5 | Cool/Cook Switch | M1 | Cooling Fan |
| S6 | High/Low Speed Motor Switch | | |