

Countertop Impingement Conveyor Ovens



351ICOE32B, 351ICOE32D, 351ICOE50B, 351ICOE50D

REVISED 12/2023

Safety Precautions

CAUTION:

Failure to comply with the following operation instructions could lead to potential hazards and/or unsafe practice and could result in injury and damage to product and property.

NOTICE:

Local codes regarding installation vary greatly from one area to another. The National Fire Protection Association, Inc., states in its NFPA96 latest edition that local codes are "Authority Having Jurisdiction" when it comes to requirement for installation of equipment. Therefore, installation should comply with all local codes. This product is intended for commercial use only. Not for residential use.

WARNING:

Do not store or use gasoline or other flammable vapors and liquids in the vicinity of this or any other equipment.

Improper installation, adjustment, alteration, service, or maintenance could lead to property damage, injury, or death. Read the installation, operating, and maintenance instructions thoroughly before installing or servicing CPG equipment.

ELECTRICAL WARNING:

Equipment lines must be reliably grounded, and equipotential terminals of equipment are recommended to be connected. It is also highly recommended to install the leakage protector, which shall be confirmed by the professional and technical personnel of the installation company.

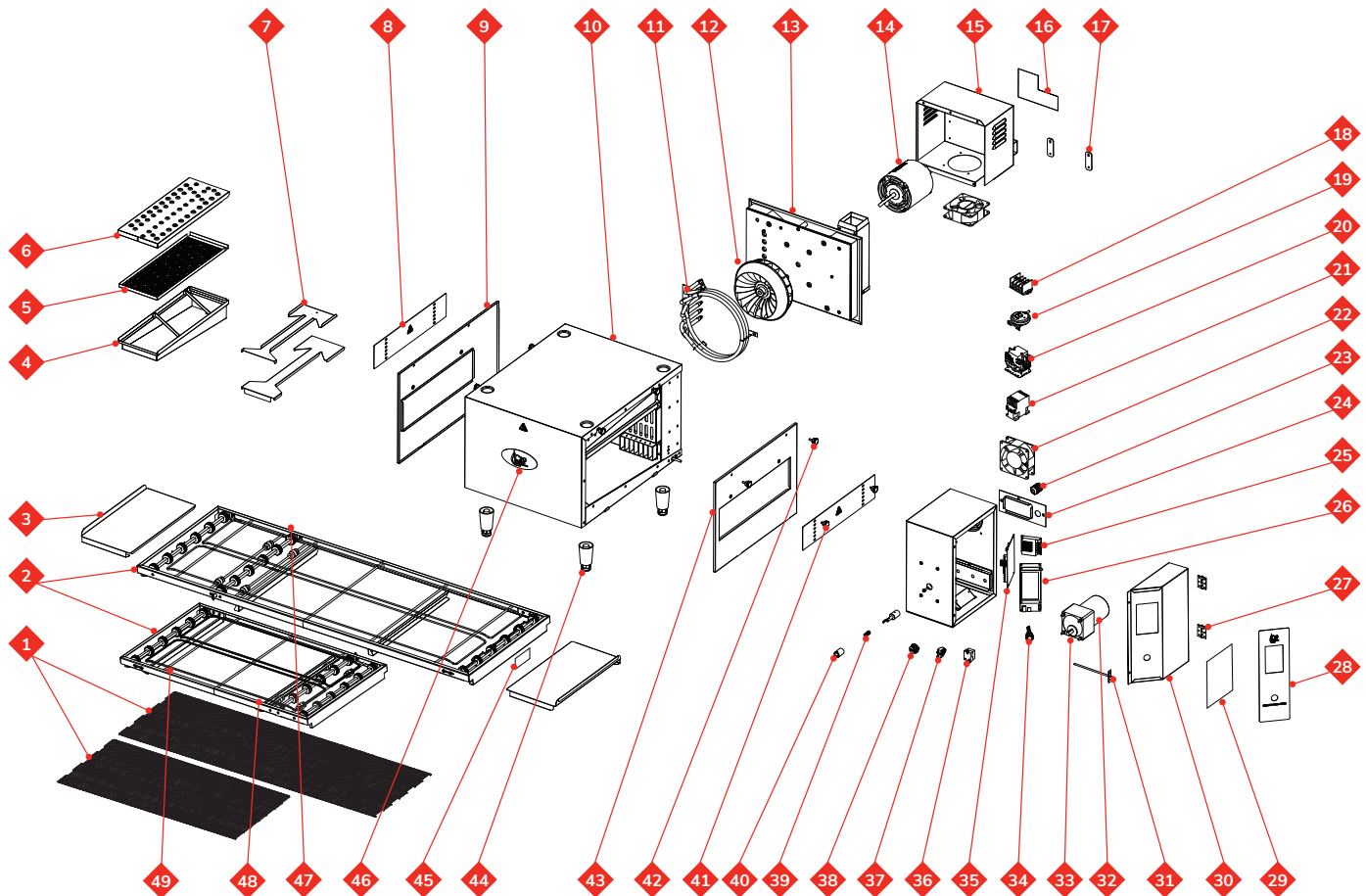


Intertek
5013357
Conforms to
NSF/ANSI 4



Intertek
5013357
Conforms to
UL STD. 197

Assembly



Assembly

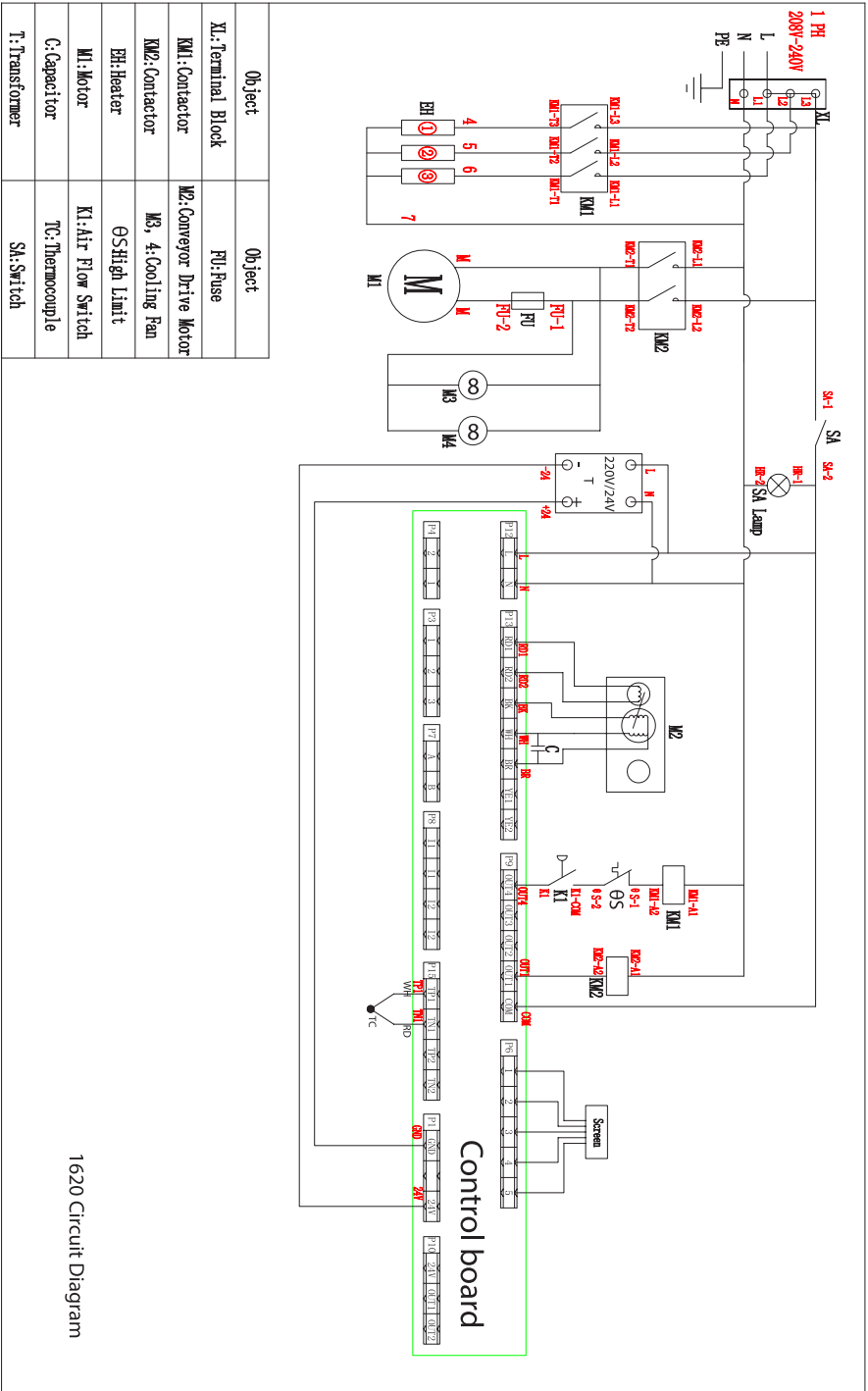
Part #	CPG Item #	Description	QTY
1(A)	351915010271	32" CONVEYOR CHAIN	1
1(B)	351915010272	50" CONVEYOR CHAIN	1
2(A)	35132BELT	32" CONVEYOR ASSEMBLY	1
2(B)	35150BELT	50" CONVEYOR ASSEMBLY	1
3	351107010033	CONVEYOR EXTENSION PLATE	2
4			
5	351107080003	AIR DISTRIBUTION ASSEMBLY	4
6			
7	351301070859	MIDDLE AIR DUCT PANEL	1
8	351301070858	CONVEYOR BAFFLE	2
9	---	HEAT DAMPER, RIGHT	1
10	---	CHAMBER	1
11(A)	351906010112	HEATING ELEMENT, 208V	1
11(B)	351906010026	HEATING ELEMENT, 240V	1
12	351909010115	FAN	1
13	---	MOUNTING PLATE, MOTOR	1
14	351905060034	FAN MOTOR, 350W, 60HZ, 208/240V	1
15	---	COVER, REAR MOTOR	1
16	---	CIRCUIT DIAGRAM STICKER	1
17	---	CONNECTING PLATE	2
18	351905120014	TERMINAL BLOCK	1
19	351905020017	AIR SWITCH	1
20	351905040007	TURBO-FAN CONTACTOR	1
21	351905040029	HEATING ELEMENT CONTACTOR	1
22	351905990003	AXIAL COOLING FAN	2
23	---	CABLE PROTECTIVE RING	1
24	---	BUSHING MOUNTING PLATE	1
25	351905090005	POWER CONTROL SWITCH	1
26	351905160065	TOUCH SCREEN	1

Assembly (Continued)

Part #	CPG Item #	Description	QTY
27	---	2" HINGE	2
28	---	PANEL STICKER	1
29	---	SERIAL PLATE	1
30	---	PANEL FRAME	1
31	351905070043	TEMPERATURE PROBE	1
32	351905060009	CONVEYOR MOTOR	1
33	351905060008	GEAR REDUCER	1
34	351905020052	POWER BUTTON	2
35	351905160068	TOUCH SCREEN CONTROLLER	1
36	351905050029	HIGH LIMIT THERMOSTAT	1
37	351905020016	CIRCUIT BREAKER	1
38	351905130024	USB CONNECTOR PLUG	1
39	351915020018	COMPRESSION SPRING	1
40	351915060177	COUPLING SLEEVE	1
41	351909120002	DAMPER HANDLE, M5-25	4
42	351909120001	DAMPER HANDLE, M5-10	4
43	---	HEAT DAMPER, LEFT	1
44	351909010002	LEGS	4
45	---	BELT SERIAL PLATE	1
46	---	LOGO	1
47	351107080041	CRUMB TRAY FOR 50" CONVEYOR	2
48	351107080038	RIGHT CRUMB TRAY FOR 32" CONVEYOR	1
49	351107080035	LEFT CRUMB TRAY FOR 32" CONVEYOR	1

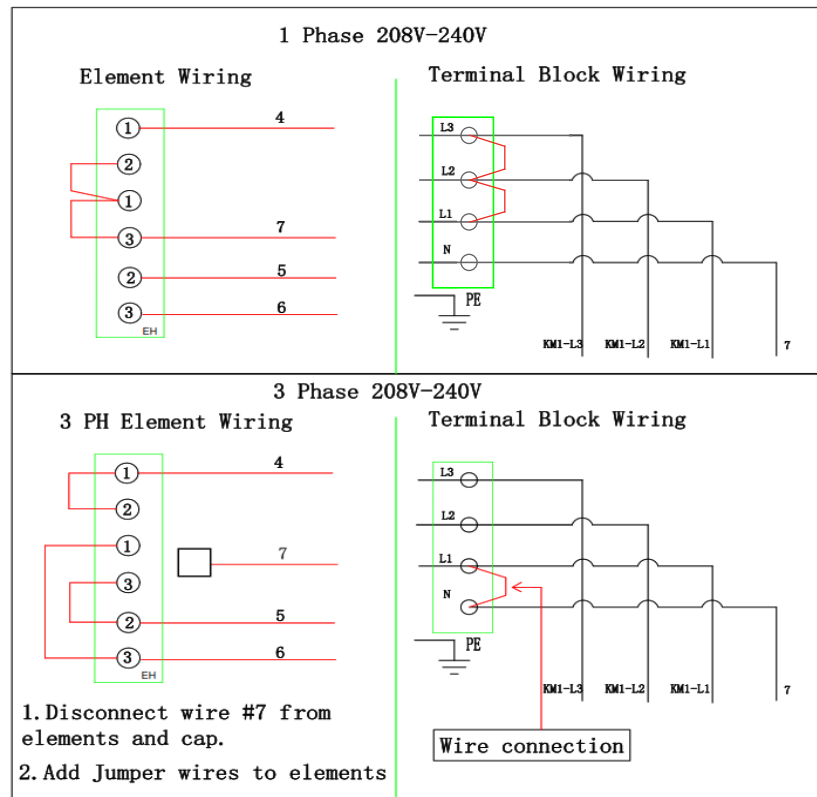
Electrical Diagrams

1 Phase:



Electrical Diagrams

1-Phase to 3-Phase Field Conversion Diagram:



Terminal Block Wiring Change

- Step 1:** Locate the incoming power terminal block inside the control box.
- Step 2:** Remove only the jumper wire that connects L1 and L2 on the terminal block.
- Step 3:** Remove only the jumper wire that connects L2 and L3 on the terminal block. (Save this jumper wire to be used in next step.)
- Step 4:** Use the jumper wire removed from step 3 and install connecting L1 and N terminals.
- Step 5:** Connect one incoming leg of power to L1.
- Step 6:** Connect the other incoming leg of power to L2.
- Step 7:** Connect the third incoming leg of power to L3.
- Step 8:** Verify that all screws are tight and wires are secure on the terminal block area after wiring has been changed.

Control box wiring is now complete.

Heating Element Wiring Change

Remove the back panel of the oven and gain access to the wire connections on the element.

- Step 1:** Remove wire #7 and use a Hi Temperature porcelain nut to cap off wire. Be sure to use Hi Temperature fiberglass tape to secure cap.
- Step 2:** Remove jumper wires from connections 3 and 1 on heating element. Remove jumpers from connections 1 and 2 on heating element.
- Step 3:** Use jumpers provided to connect terminals 3 and 1 on element, 2 and 3 on element, and 1 and 2 on element as picture in diagram.

Element wiring is now complete.

Verify change by running the oven and using an amperage clamp on each incoming leg of power to see if all three legs draw amperage during heating cycle.