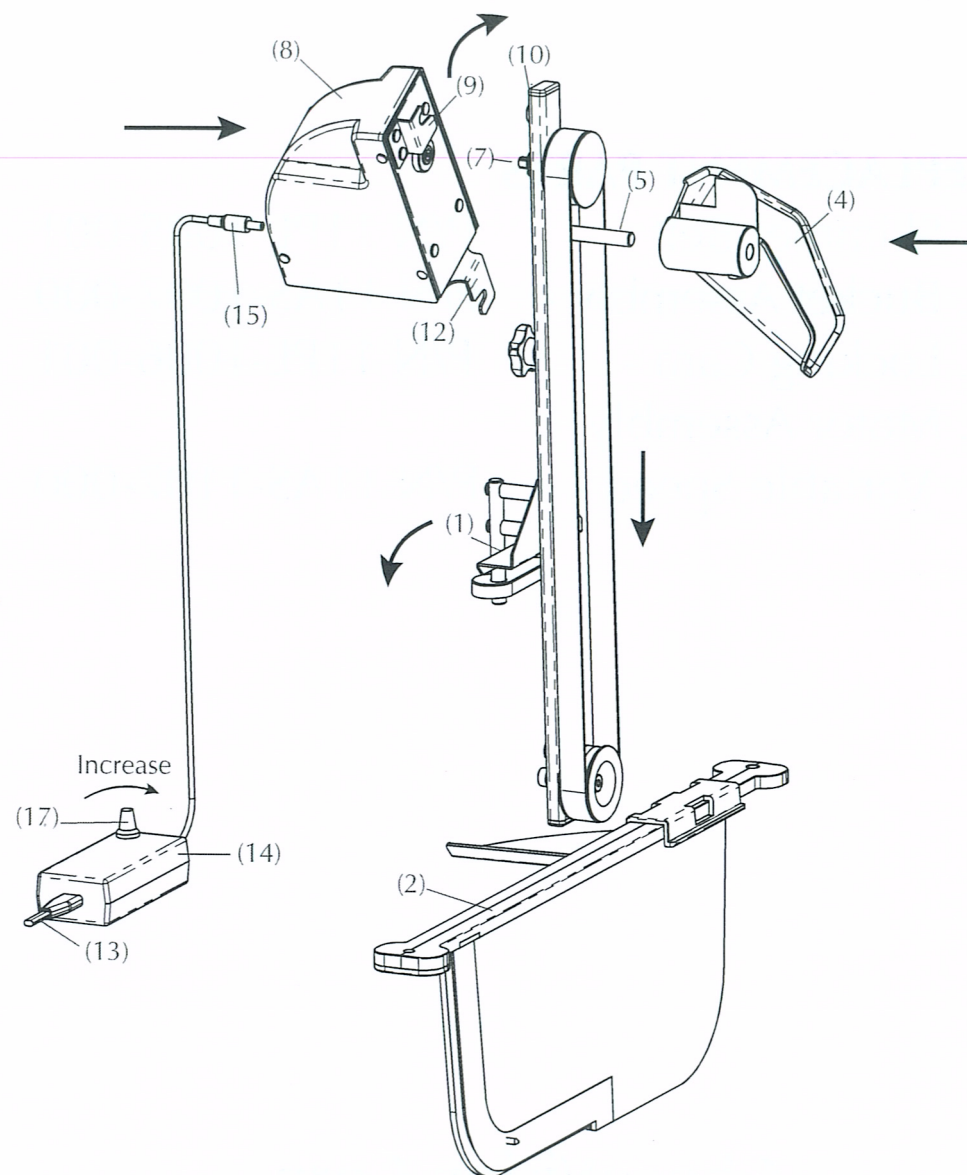


INSTALLATION & OPERATION

- I. Position the post assembly over the tempering bowl, hook bracket (1) onto the baffle rail (2) and turn cam (3) to lock.
- II. Engage the bore in the dispensing bucket collar (4) with post (5) and align the slot in the bucket with the belt. Push the bucket to lock. Edge of the scraper (6) should lie against face of the drive pulley (7).
- III. Align a flat on the square hole in the motor (8) with the axle square on the drive pulley (7) and push the motor to seat. Rotate the motor until the slots in upper mounting clip (9) engage the upper ramp pin (10). Tighten the locking knob (11) against the lower mounting clip (12).
- IV. Connect the power supply cord (13) to the power supply (14), and plug the circular jack (15) from the power supply (14) into the receptacle on the motor (16). Rotate the speed control knob (17) on the power supply counter clockwise until it stops and plug the power supply cord (13) into a 115V receptacle. Rotate the speed control knob (17) clockwise to increase the motor speed and start dispensing. The speed will determine the amount of chocolate dispensed.
START ONLY AFTER CHOCOLATE IN THE TEMPERING BOWL IS FULLY MELTED AND THE BOWL IS ROTATING.



CLEANING INSTRUCTIONS

For best results we recommend scraping the excess chocolate from the bucket and exposed section of the belt, disassembling by reversing the installation procedure and washing the post assembly and bucket in warm water with detergent.

DO NOT IMMERSE THE MOTOR ASSEMBLY IN WATER.

If desired, the post assembly can be left on the tempering machine and restarted provided excess chocolate is cleaned off the exposed portion of the belt, drive pulley and bucket slot. When doing this, allow the tempering bowl to rotate for a few minutes to allow the chocolate on the immersed idler pulley to liquify.

IF THE SKIMMER BELT DOES NOT MOVE AFTER STARTING THE MOTOR, STOP THE MOTOR IMMEDIATELY.