

G-77

Dual Grease Gun Pistol / Lever Handle

Convenience of a Pistol Grip with Power of a Lever Handle

2 Way Operating Telescopic Handle

Press lever to switch between Pistol type: ideal for use in confined spaces
Lever type: for high pressure & high volume application

Dual Discharge Ports

Front port for use in pistol mode & top port for use in lever mode

Multifunction Grease Gun

Integrated high volume – high pressure adjustable mechanism

Shift between high volume & high pressure greasing

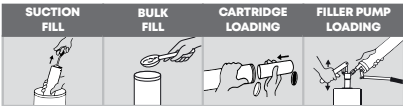
1. Lift the button to unlock
2. Slide to change mode
3. Press button to lock back in position

Built Tough

- Aluminum die cast head fitted with bulk loader & air bleeder valve
- Barrel with 0.049" (1.2 mm) wall thickness
- Heavy duty follower spring
- Non-slip comfortable vinyl grip
- Rolled threads for quick & easy re-loading

For use with 400 gm (14 oz.) Grease cartridge or 500 cc Bulk Fill

Suitable for use with NLGI 1, 2, 3 greases
Complete with 6" (150 mm) bent steel extension, 18" (450 mm) x 0.33" (8.5 mm) flexible hose & coupler



CAT NR.	CARTRIDGE CAPACITY		BULK CAPACITY	THREADS
STEEL EXTENSION & FLEXIBLE HOSE WITH COUPLER	(OZ)	(GMS)	(CM ³)	
G77RF-18/B	14	400	500	1/8" BSPT
G77RF-18/M	14	400	500	M10 x 1
G77RF-18/N	14	400	500	1/8" NPT

SPECIFICATIONS HIGH PRESSURE MODE

LEVER STYLE		PISTOL STYLE	
Pressure	Delivers	Pressure	Delivers
7000 PSI (483 Bar)	Upto 0.65gms/stroke (1 oz. per 44 strokes)	4500 PSI (483 Bar)	Upto 0.65gms (1 oz. per 44 strokes)

HIGH VOLUME MODE

LEVER STYLE		PISTOL STYLE	
Pressure	Delivers	Pressure	Delivers
5500 PSI (379 bar)	Upto 1.1 grams / stroke (1 oz. per 26 strokes)	N.A	N.A

SAFETY INFORMATION

- Follow workshop health & safety rules, regulations and conditions when using the grease gun.
- During their period of use, accessories must be checked for wear, cracks and other damage, replace any damaged or worn parts.
- Use genuine parts only. Unauthorized parts may be dangerous and will void the warranty.
- Wear approved safety gloves and eye and ear protection.
- Keep the gun clean and in good working order for best and safest performance.

WARNING!

- DO NOT use the gun for a task it is not designed to perform.
- DO NOT drop, throw or abuse the gun.
- DO NOT carry the gun by the extension.
- Grease is delivered at high pressure. DO NOT point the grease gun outlet at yourself or others.
- DO NOT use gun if damaged or thought to be faulty. Contact your local service agent.

PACKAGE CONTENT

DESCRIPTION	QUANTITY
Dual Grease Gun Pistol / Lever Handle	1
Extension (Rigid steel & Flexible hose) with grease coupler	1
O.I.P.M.	1

TOOLS NEEDED

- 14 mm spanner (9/16" spanner)
- 12 mm spanner

BEFORE INSTALLATION

- Use only original accessories compliant with these guns.
- Keep hose away from heat, oil and sharp edges. Check hose for wear and make sure that all connections are secure.
- Excess pressure at the greasing point can damage the grease nipple, bearings, and even the machine.

WARNING!

- Defective accessories can lead to personal injury and material damage.

INSTALLATION

(Refer "EXPLODED VIEW")

Setting up the grease gun head

Note: Use P.T.F.E. tape while connecting extension (4) to the grease gun head (2) and grease coupler (3) to the extension (4).

- Connect the extension (4) to the outlet of grease gun head (2).

- Thread tighten the grease coupler (3) to other end of extension (4).
- All connections should be tight.

CAUTION!

Grease or empty cartridge in barrel is under pressure from the internal spring. Be alert when removing head of the barrel.

Loading the grease gun

1. Remove any cartridge in the grease gun barrel (1) prior to refilling.
2. To check if a cartridge is in the grease gun barrel (1), first pull out the plunger handle (6) to its maximum distance and lock it in place.
3. Remove the grease gun head (2) by turning it counter clockwise.
4. Remove any empty cartridge.

Always follow the steps listed above in preparing to load your grease gun before proceeding to the appropriate loading method.

There are 4 ways to load this grease gun:

- **Cartridge loading**
- **Bulk fill**
- **Suction fill**
- **Filler pump loading**

Cartridge loading

1. Fully draw back the plunger handle (6) and lock it in place.
2. Remove the grease gun head (2) from the grease gun barrel (1) by turning it counter clockwise.
3. Insert the open end of the cartridge into the grease gun barrel (1) and push it all the way in.
4. Remove the seal or pull tab end from the cartridge.
5. Reassemble the grease gun head (2) to the grease gun barrel (1) by turning it clockwise.

Bulk fill

1. Fully draw back the plunger handle (6) and lock it in place.
2. Remove the grease gun head (2) from the grease gun barrel (1) by turning it counter clockwise.
3. Fill the grease gun barrel (1) with grease using a spatula.
4. Reassemble the grease gun head (2) to the grease gun barrel (1) by turning it clockwise.

Suction fill

1. Remove the grease gun head (2) from the grease gun barrel (1) by turning it counter clockwise.
2. Submerge the open end of the grease gun barrel (1) into grease bucket by approximately 2" and fully draw back the plunger handle (6) and lock it in place.
3. Reassemble the grease gun head (2) to the grease gun barrel (1) by turning it clockwise.

Filler Pump loading

1. Fully draw back the plunger handle (6) and lock it in place.
2. Insert bulk loader valve (9) into the filler pump socket.
3. Operate the filler pump to fill the grease gun barrel (1).
4. Disconnect the grease gun from the filler pump.

CAUTION!

- Do not apply excessive torque or over-tighten the grease gun head as this will apply undue stress to the die cast outlet and may cause it to fracture.

Removing trapped air

After filling grease gun, trapped air should be removed by following the below steps.

General procedure

1. After filling grease gun barrel (1) with grease by any of the above methods, while reassembling the gun keep at least 2-3 turns open.
2. Operate the grease gun continuously.
3. Release the plunger rod (7) by pushing down the plunger handle (6).
4. Also move the plunger rod (7) forward and backward to remove any trapped air pockets.
5. Keep operating the grease gun continuously till the grease comes out of the grease coupler (3).
6. Now tighten the grease gun head (2) to the grease gun barrel (1).
7. The grease gun is now ready to use.

Procedure for grease gun with air release valve

1. After filling grease gun barrel (1) with grease by any of the above methods, reassemble the gun.
2. Tap the manual air release valve (8) to release the trapped air.
3. Move the plunger rod (7) forward and backward to remove any trapped air pockets.
4. Keep operating the grease gun continuously till the grease comes out of the grease coupler (3).
5. Tap the manual air release valve (8) again to release the trapped air.
6. The grease gun is now ready to use.

OPERATING INSTRUCTIONS

(Refer "EXPLODED VIEW")

Lever/Pistol handle mode

1. Two handle modes are available.
 - **Pistol mode** for space constraints and with low pressure requirements.
 - **Lever mode** for open spaces and in high pressure applications.

2. To convert the gun from pistol to lever mode follow the steps as shown in the figure.



Press Trigger

Pull Handle

3. To convert the gun from lever to pistol mode follow the above steps in reverse order.

High pressure/ high volume mode

1. For **High Pressure mode** (to achieve max. working pressure in a few strokes, making it useful to open jammed / clogged fittings conveniently even in very cold weather conditions).
 - While pulling the button (10), push the lever towards the grease gun barrel (1) as shown in the figure.



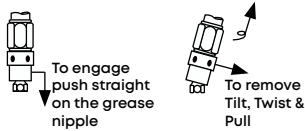
2. For **High Volume mode** (to achieve max. output and less greasing time)
 - While pulling the button (10), pull the lever away from the grease gun barrel (1) as shown in the figure.



Greasing a grease fitting/grease nipple

1. The grease coupler (3) provided at the end of the extension (4) has a jaw type construction. The coupler jaws will snap on to a grease fitting and maintain a tight fit.
2. When connecting the grease coupler (3) to the grease fitting, press the grease coupler (3) straight onto the grease fitting to form a snug fit.
3. Start operating the grease gun with the grease coupler (3) as aligned to the grease fitting as possible.

4. Once greasing is completed, slightly tilt the grease coupler (3), twist and pull back.
5. The tilt and twist action will allow easy removal of the green couples (3) from grease fitting.



WARNING!

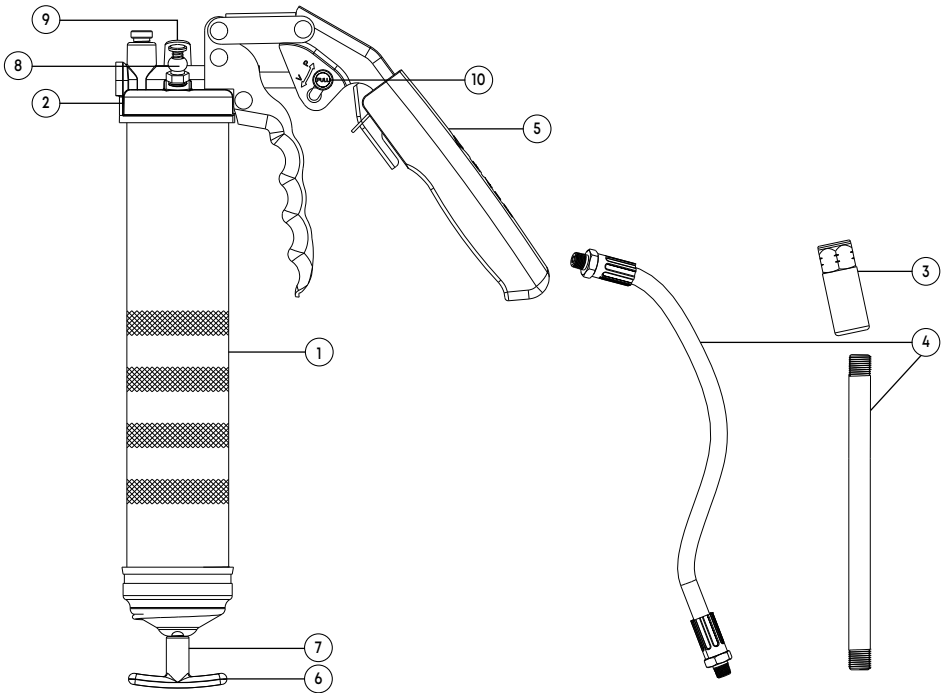
- Do not exceed the maximum working pressure of 7,000 PSI.

MAINTENANCE

(Refer "EXPLODED VIEW")

- Grease gun and extension (4) should be kept clean and checked for damage before each use.

EXPLODED VIEW



PARTS LIST

REF NO.	PARTS DESCRIPTION	QUANTITY
1	Grease gun barrel	1
2	Grease gun head	1
3	Grease coupler	1
4	Extension (Rigid steel & Flexible hose)	1
5	Lever / Pistol	1

REF NO.	PARTS DESCRIPTION	QUANTITY
6	Plunger handle	1
7	Plunger rod	1
8	Air release valve	1
9	Bulk loader valve	1
10	Button	1

TROUBLESHOOTING

PROBLEM	POSSIBLE CAUSE	CORRECTIVE ACTION
Grease gun pumps little or no grease	Barrel not completely tightened	Tighten the barrel completely
	Air Pockets are trapped in grease	Remove air pocket by referring to "Removing trapped air" section
	Blocked grease gun extension	Remove the extension and operate the grease gun. If the gun dispenses grease then the gun is fine. Clean or replace the extension
	Grease too thick or cold	Store grease gun and grease away from extreme cold or use thinner grease
Excessive grease leaking past the follower	Follower is damaged	Replace the grease gun
If the gun still doesn't operate		Contact nearest authorized service dealer

DISPOSAL

The components or the used products must be given to companies that specialize in the disposal and recycling of industrial waste.

