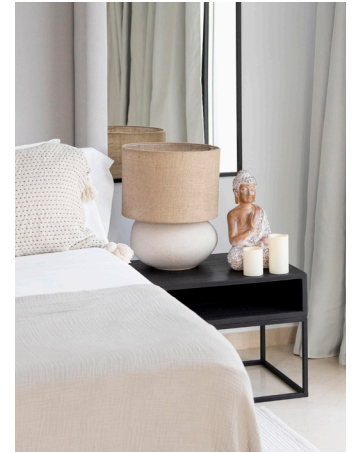


# *Sleek &* MODERN

## CURATED COLLECTIONS





## Sleek & MODERN

Embrace a contemporary look with clean lines and sleek finishes. Our collections merge modern design with practicality, creating a fresh, airy atmosphere with minimalist elements and a neutral palette, perfect for modern interiors.

### 1. New York

A high-gloss, chip-resistant composite collection with clean, structured lines.

### 2. London

Durable vegan leather in sturdy forms available in a range of neutral shades.

### 3. Brandon

Modern geometric elements and elongated lines combine for a bold, versatile look.

### 4. Kyoto™

Sleek linear design with an angled rim, offering the perfect fusion of style and durability.

### 5. Metroweave®

Sustainable woven vinyl mats, liners, and accessories. Stain and fade-resistant with easy care.

### 6. Buffet Collections

A well-designed buffet enhances any gathering by optimizing space and elevating presentations with varied display heights and sizes.

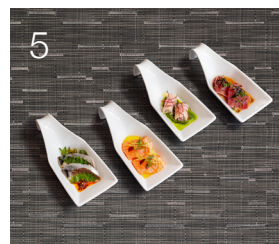


*Get The Look.*

## GUEST ROOM



## DINING



## PUBLIC SPACES





# CUSTOM CAPABILITIES

Let our Miami-based design team walk you through the process of creating something that is entirely personalized to your preference.

## Custom shapes and sizes

Explore limitless options with our custom shapes  
& sizes for all of your favorite collections & materials.

## Concept development

Incorporate the latest technology, including 3D renderings, prints, and production quality samples.

## Custom colors

Match your brand's color scheme by providing your Pantone number or color swatch for effortless pairing.

## Porcelain decorating

Provide your logo or artwork to customize any of our products using our in-house decorating & kiln firing to produce hand-crafted final products.

## Engraving

Take your branding to the next level using our in-house engraving technology.

*Inspiration Starts Here*



Scan here to request  
a design consultation.

