



SANITIZER SOLUTIONS

COMPREHENSIVE SANITIZER SOLUTIONS

Outfit your facility with our complete line of sanitizer solutions.

1980826 /
2143544

1980826 /
2143543



PUMP BOTTLES, DISPENSERS, & REFILLS

Pump up the performance of your facility with our sanitizer dispensers and refills.

Pages 10-17



POLE & WALL MOUNT SOLUTIONS

Space-saving sanitizer solutions for easily-overlooked places like poles and railings in stairwells.

Pages 18-19



TABLETOP STATIONS

Portable sanitizer solutions that can be placed and move around on flat surfaces like reception desks.

Pages 20-21



FLOOR STANDS

Flexible sanitizer solutions for any open area, from high-traffic office hallways to airport terminals.

Pages 22-23

MAKE HAND HYGIENE MORE ACCESSIBLE

Rubbermaid Commercial Products offers a complete portfolio of sanitizer solutions that enable facilities to place sanitizer anywhere and everywhere to help encourage proper hand hygiene.



1980826 /
FG750824



1980826 /
2143454

HAND HYGIENE AT A GLANCE

▶ **80%**
OF ALL INFECTIONS ARE
**TRANSMITTED
BY HANDS**¹



**A VIRUS ON A
DOORKNOB CAN BE
PICKED UP BY
40-60%**
OF FACILITY VISITORS
WITHIN 2-4 HOURS²



BENEFITS TO YOUR FACILITY



PROMOTE HEALTH & WELLNESS

Placing alcohol-based hand sanitizers in high-traffic areas increases visitor usage by 5.28 times³



IMPROVE PRODUCTIVITY

Unplanned absences can cause workplace challenges, including a 54% decrease in productivity/output⁴



MEET CUSTOMER EXPECTATIONS

70% of people say that hand sanitizer at all entrances is "very important" in order to feel safe in public spaces⁵

Sources: ¹University of Arizona Study, Dr. C. Gerba | ²BMC Infectious Diseases Study, 2010 | ³American Journal of Infection Control, 1 March 2016
⁴ISSA, "The Value of Clean" | ⁵Deloitte: "Safety & Cleanliness- Make it or break it"



FG750411 /
FG750824

SANITIZER EDUCATION

Proper hand hygiene is important to help prevent the spread of germs in high-traffic areas; 80% of germs are transmitted by touch. Understanding the role of hand sanitizer can help prevent illness.

SANITIZER INGREDIENTS

Sanitizers are made up of a combination of ingredients to meet your specific needs.

Water + Moisturizer + Alcohol / Fragrance

1 2 3

- 1 MOISTURIZER:**
Helps to keep skin hydrated
- 2 ALCOHOL:**
Active ingredient used in alcohol-based sanitizers
- 3 FRAGRANCE:**
Clean with or without added scents

The Centers for Disease Control and Prevention recommends using an alcohol-based hand sanitizer that contains at least 60% alcohol.*

SANITIZER FORMAT DIFFERENCES



FOAM

- Dispenses in a light, airy consistency
- Lathers quickly for an easy hand wash
- Rinses easier to reduce drain maintenance



GEL

- Has a gentle, cooling effect
- Evaporates quickly after use for dry hands

Centers for Disease Control and Prevention,* 2 April 2020

WHEN TO USE HAND SANITIZER

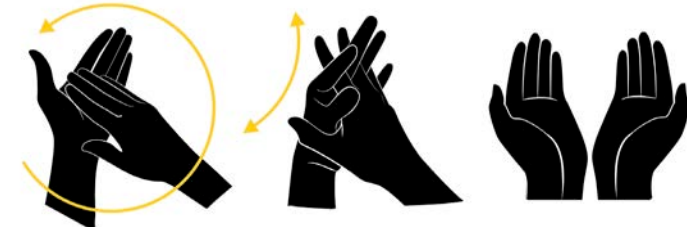
If soap and water are not available, use an alcohol-based hand sanitizer that contains at least 60% alcohol, and wash with soap and water as soon as you can.



HOW TO APPLY HAND SANITIZER PROPERLY



1 Apply hand sanitizer to palm of hand



2 Rub sanitizer over all the surfaces of hands and fingers until hands are dry



Wash hands if hands are visibly dirty

CERTIFICATIONS & REGISTRATIONS

FDA

Hand sanitizers are regulated as an over-the-counter (OTC) medication and are overseen by the FDA (Food & Drug Administration). A thorough review must be conducted before a product can be registered by the FDA.



National Sanitation Foundation (NSF) certification is a regular on-site inspection of manufacturing facilities and re-testing of products to ensure that they continue to meet the same high standards required over time.

The NSF Hand Care product category is divided into three sub-categories relevant to RCP's sanitizer solutions:

- E1 - Handwashing products
- E2 - Handwashing and sanitizing products
- E3 - Hand-sanitizing products
- Indicates that the product is certified in the SKU listings



LEED (Leadership in Energy and Environmental Design), issued by U.S. Green Buildings Council, is a rating system that recognizes best-in-class sustainable buildings. The more energy-efficient and "green" the building is, the more points it will earn.

- AutoFoam with LumeCel™ helps with earning LEED points

ADA

Americans with Disabilities Act prohibits discrimination and ensures equal opportunity for people with disabilities. Sanitizer dispensers must meet the following requirements:

- Dispenser cannot protrude more than 4 inches from the wall
- Dispenser should be able to dispense with the use of one hand
- Force required to activate dispenser cannot exceed five pounds

The following RCP products meet these requirements:

- Premium AutoFoam Floor Stand
- Use with AutoFoam or Bracket/Pump Bottle
- AutoFoam Tabletop Station
- Use with AutoFoam
- Pole Mount Station
- Use with AutoFoam
- FLEX (1300 mL)
- Manual Foam
- AutoFoam Standard Floor Stand
- Use with AutoFoam

**PUMP BOTTLES,
DISPENSERS,
AND REFILLS**

Help protect your employees' well-being with Rubbermaid Commercial Products pump bottles and automatic and manual sanitizer dispensers. These reliable dispensing systems can help positively impact your bottom line.



2133501

**ALCOHOL-BASED
HAND SANITIZER GEL**

Assists with proper hand hygiene to help prevent the spread of germs by killing 99.99% of germs on hands.



2133271

2133100

2133501

MOISTURIZING FORMULA
Contains Aloe and Vitamin E

KILLS 99.99% OF GERMS
Contains 70% Ethyl Alcohol

LEMON-SCENTED
Features fresh lemon scent



FDA REGISTERED
Listed in the National Drug Code Directory





1980826 / FG750824

AUTOFOAM WITH LUMECEL™ TECHNOLOGY

Battery-free dispenser automatically delivers controlled amounts of sanitizer and helps to prevent the spread of germs on hands.

LIGHT-POWERED

LumeCel technology efficiently powers dispenser, using only indoor light

COLOR OPTIONS

Choose from a variety of color options



REFILL & LIGHT ALERTS

Indicate when refill is required or energy cells need more light

TOUCH-FREE DELIVERY

Dispenses sanitizer automatically to help prevent cross-contamination on hands

AUTOFOAM REFILL

Delivers up to 2,500 doses per 1000 mL refill



2080802

KILLS 99.99% OF GERMS

Contains 75% (v/v) Ethyl Alcohol in accordance with CDC recommendations*

DYE AND FRAGRANCE-FREE

Gentle on sensitive skin

LIGHT, AIRY CONSISTENCY

Foam formulation makes it easier to spread around on hands

*CDC recommends using an alcohol-based hand sanitizer that contains at least 60% alcohol. Source: "Centers for Disease Control and Prevention," 2 April 2020.



HAND HYGIENE STATION



1980826 / FG750824



ADA COMPLIANT





HAND HYGIENE STATION

AUTOFOAM

Efficient battery-powered dispenser automatically delivers controlled amounts of sanitizer and helps to prevent the spread of germs on hands.

COLOR OPTIONS

Choose from a variety of color options



FG750411



FG750139



FG750140



FG750127



FG750138

REFILL & LIGHT ALERTS

Indicate when refill is required or batteries need to be replaced

TOUCH-FREE DELIVERY

Dispenses sanitizer automatically to help prevent cross-contamination on hands

AUTOFOAM REFILL

Delivers up to 2,500 doses per 1000 mL refill



2080802

KILLS 99.99% OF GERMS

Contains 75% (v/v) Ethyl Alcohol in accordance with CDC recommendations*

DYE AND FRAGRANCE-FREE

Gentle on sensitive skin

LIGHT, AIRY CONSISTENCY

Foam formulation makes it easier to spread around on hands

*CDC recommends using an alcohol-based hand sanitizer that contains at least 60% alcohol. Source: "Centers for Disease Control and Prevention," 2 April 2020.

FG750411 / FG750824

Warranty
**LIFE
TIME**



ADA COMPLIANT



FG750411 / FG750824





FLEX™

Offers adjustable dose sizes for flexibility in your facility.

DISPENSER COLORS:
Choose between two color options:



ANTIMICROBIAL PUSHBAR
Specially-treated coating helps to reduce growth of bacteria and germs on handle

ADJUSTABLE DOSE SIZES
Choose from 0.4 mL, 0.65 mL, or 1.0 mL doses, using an adjustable, internal lever

FLEX FOAM REFILL

Delivers up to 2,500 doses per 1000 mL refill



KILLS 99.99% OF GERMS
Contains 75% (v/v) Ethyl Alcohol in accordance with CDC recommendations*

DYE AND FRAGRANCE-FREE
Gentle on sensitive skin

LIGHT, AIRY CONSISTENCY
Foam formulation makes it easier to spread around on hands

3486577

*CDC recommends using an alcohol-based hand sanitizer that contains at least 60% alcohol.
Source: "Centers for Disease Control and Prevention," 2 April 2020.



MANUAL FOAM

Economical dispensing system that delivers foam sanitizer on demand.

VIEWING WINDOW
Enables maintenance staff to monitor when to replace refills

ANTIMICROBIAL PUSHBAR
Specially-treated coating helps to reduce growth of bacteria and germs on handle

MANUAL FOAM REFILL

Delivers up to 2,500 doses per 1000 mL refill



KILLS 99.99% OF GERMS
Contains 75% (v/v) Ethyl Alcohol in accordance with CDC recommendations*

DYE AND FRAGRANCE-FREE
Gentle on sensitive skin

LIGHT, AIRY CONSISTENCY
Foam formulation makes it easier to spread around on hands

2080803

*CDC recommends using an alcohol-based hand sanitizer that contains at least 60% alcohol.
Source: "Centers for Disease Control and Prevention," 2 April 2020.



FG450017 /
2143454





POLE & WALL MOUNT SOLUTIONS

Rubbermaid Commercial Products Pole Mount & Wall Mount Solutions allow dispensers and pump bottles to be mounted or placed on any wall or pole surface for convenient access.

1980826 /
2143454

POLE MOUNT STATION¹

Allows both touch-free and manual dispensers to be placed on poles and railings to promote a healthy work environment.

DISPENSER COMPATIBILITY

Works with all Rubbermaid Commercial Products manual and automatic dispensers*

*Not compatible with 500 mL Flex dispenser.

DRIP TRAY
Helps eliminate messes on floors by collecting excess sanitizer

MOUNTING OPTIONS

Mounts vertically or horizontally on poles between 2 and 5 inches in diameter

2143454

METAL BRACKETS¹

Securely hold either 32oz or 64oz Alcohol-Based Hand Sanitizer Gel bottles for easy, convenient access.

DUAL-PURPOSE SOLUTION

Mounts to the wall or on RCP floor stands²

SECURE MECHANISM

Includes optional key-less latch accessory to help prevent theft and vandalism

2140775

2140776

¹Hardware included

²Only works with the Premium Stand (FG750824), not Standard (2143543)





AUTOFOAM TABLETOP STATION

Help encourage proper hand hygiene among patrons and employees with Rubbermaid Commercial Products Tabletop Stations, which can be easily moved around on flat surfaces like reception desks in high-traffic areas.

1980826 /
2143544

LIGHTWEIGHT, PORTABLE STAND
Can be easily moved to clean counters; includes a convenient handle

MULTI-SOLUTION
Works with AutoFoam and
AutoFoam with LumeCel dispensers



FG750411 /
2143544

1980826 /
2143544

BUILT-IN DRIP TRAY
Helps eliminate messes on tabletops by
collecting excess sanitizer

ANTI-SCRATCH PADS
Helps protect flat surfaces from any potential scratches

2143544



FLOOR STANDS

Rubbermaid Commercial Products Floor Stands are the perfect sanitizer solutions for open, high-traffic areas like lobbies to meet the changing needs of your facility.

FG750411 /
2143543

AUTOFOAM PREMIUM FLOOR STAND

Offers superior compatibility, allowing both touch-free dispensers and pump bottles to be mounted to a sturdy, secure stand for demanding commercial environments

BUILT-IN DRIP TRAY

Helps eliminate messes on floors by collecting excess sanitizer

OPTIMAL HEIGHT

Allows for quick, convenient access for users on-the-go

WEIGHTED BASE

Help stabilize the hand sanitizer station for secure placement



FG750824

AUTOFOAM STANDARD FLOOR STAND

Allows touch-free dispensers to be mounted to a lightweight, easily movable stand to meet the changing needs of commercial facilities

EASY INSTALLATION

Two-piece pole design is easy to assemble and can be broken down for convenient storage, as needed

LIGHTWEIGHT, TRANSPORTABLE DESIGN

Free-standing floor stand is easily movable to adapt to your needs



2143543

AutoFoam Dispensers with LumeCel Technology

NO.	DESCRIPTION	COLOR	CASE QTY
1980826	AutoFoam Dispenser with LumeCel Technology	Black/Chrome	10
1980827	AutoFoam Dispenser with LumeCel Technology	Black/Grey Pearl	10
1980828	AutoFoam Dispenser with LumeCel Technology	White/Grey Pearl	10
1980829	AutoFoam Dispenser with LumeCel Technology	Black/Black Pearl	10
1980831	AutoFoam Dispenser with LumeCel Technology	White/Black Pearl	10



AutoFoam Accessories

NO.	DESCRIPTION	CASE QTY
1892265	AutoFoam Drip Tray	4
400845	AutoFoam Dispenser Key	4

FLex Dispensers

NO.	DESCRIPTION	VOLUME	COLOR	CASE PACK
3486591	FLex Dispenser	1000 mL, 1300 mL	White	10
3486592	FLex Dispenser	1000 mL, 1300 mL	Black	10

Top-selling item



Manual Foam Dispensers

NO.	DESCRIPTION	VOLUME	COLOR	CASE QTY
FG450017	Manual Foam Dispenser	800 mL	White	10
FG450034	Manual Foam Dispenser	800 mL	Black	10
1853755	Manual Foam Dispenser	800 mL	Stainless	10



AutoFoam Dispensers

NO.	DESCRIPTION	COLOR	CASE QTY
FG750411	AutoFoam Dispenser	Black/Chrome	10
FG750139	AutoFoam Dispenser	Black/Grey Pearl	10
FG750140	AutoFoam Dispenser	White/Grey Pearl	10
FG750127	AutoFoam Dispenser	Black/Black Pearl	10
FG750138	AutoFoam Dispenser	White/Black Pearl	10

Does not include 4 C-Cell batteries



AutoFoam Refill

Delivers up to 2,500 doses per 1000 mL refill

NO.	DESCRIPTION	VOLUME	CASE QTY
2080802	Alcohol Foam Hand Sanitizer - E3	1000 mL	4

NSF-certified



FLex Refill

Delivers up to 3,250 doeses per 1,300 mL refill

NO.	DESCRIPTION	VOLUME	CASE QTY
3486577	Alcohol Plus Foam Hand Sanitizer - E3	1000 mL	3

NSF-certified



Manual Foam Refill

Delivers up to 2,000 doses per 800 mL refill

NO.	DESCRIPTION	VOLUME	CASE QTY
2080803	Alcohol Foam Hand Sanitizer	1000 mL	4



Floor Stands

NO.	DESCRIPTION	COLOR	CASE QTY
FG750824	AutoFoam Premium Floor Stand	Black	1
2143543	AutoFoam Standard Floor Stand	Black	1



FG750824 2143543

AutoFoam Tabletop Station

NO.	DESCRIPTION	COLOR	CASE QTY
2143544	AutoFoam Tabletop Station	Black	5



2143544

Pole Mount Station

NO.	DESCRIPTION	COLOR	CASE QTY
2143454	Pole Mount Station*	Black	5

*Includes mounting hardware



2143454

Metal Brackets

NO.	DESCRIPTION	COLOR	CASE QTY
2140775	Metal Bracket for 32oz Alcohol-Based Hand Sanitizer Gel*	Black	5
2140776	Metal Bracket for 64oz Alcohol-Based Hand Sanitizer Gel*	Black	5

*Includes latch accessory



2140775 2140776

Alcohol-Based Hand Sanitizer Gel

NO.	DESCRIPTION	SCENT	CASE QTY
2133271	16oz Alcohol-Based Hand Sanitizer Gel	Lemon	10
2133100	32oz Alcohol-Based Hand Sanitizer Gel	Lemon	6
2133501	64oz Alcohol-Based Hand Sanitizer Gel	Lemon	4



2133271 2133100 2133501

REFERENCE GUIDE

	AutoFoam with LumeCel	AutoFoam	FLex	Manual Foam	Alcohol-Based Sanitizer Gel
AUTOFOAM PREMIUM FLOOR STAND	●	●			●
AUTOFOAM STANDARD FLOOR STAND	●	●			
POLE MOUNT STATION	●	●	●	●	
AUTOFOAM TABLETOP STATION	●	●			
METAL BRACKET					●



AutoFoam
Premium Floor Stand

AutoFoam
Standard Floor Stand

Pole Mount
Station

AutoFoam
Tabletop Station

Metal
Bracket



1980826 /
FG750824

1980826 /
2143544



RCP1615 | © 2020 Rubbermaid Commercial Products LLC | 8900 Northpointe Executive Park Drive, Huntersville, NC 28078
To see our complete range of washroom solutions, visit our online catalog at [RubbermaidCommercial.com](https://www.RubbermaidCommercial.com)