

# HOSPITALITY

CATALOG





# KEECO AT A GLANCE

Keeco is the largest home textile manufacturer and supplier in North America.

You'll find our products in the finest retailers, e-tailers and hotels worldwide.

Our world-class manufacturing facilities utilize quality raw materials that are ethically and responsibly sourced to ensure the highest quality product for our consumers.



**1953**  
ESTABLISHED



**2,300+**  
ASSOCIATES



**3 MILLION+**  
**ROOMS**  
AS PART OF A HOTEL  
STANDARD



**7 NORTH AMERICAN**  
MANUFACTURING FACILITIES  
& DISTRIBUTION CENTERS



**US BASED**  
PRODUCTION



**INTERNATIONAL**  
SOURCING

# FULL RANGE OF EXPERTISE



**UTILITY BEDDING**



**FASHION BEDDING**



**LINEN**



**BATH**



**BEST IN CLASS PRODUCT  
DEVELOPMENT**



**INDUSTRY-LEADING  
SUSTAINABILITY  
EFFORTS**



**WORLD CLASS QUALITY  
INFRASTRUCTURE**



**MARKET RESEARCH  
ANALYSIS**



**PREMIER INTELLECTUAL  
PROPERTY**

# GLOBAL SOURCING, PRODUCTION & DISTRIBUTION

## GLOBAL SOURCING OFFICES:

China | Pakistan | India

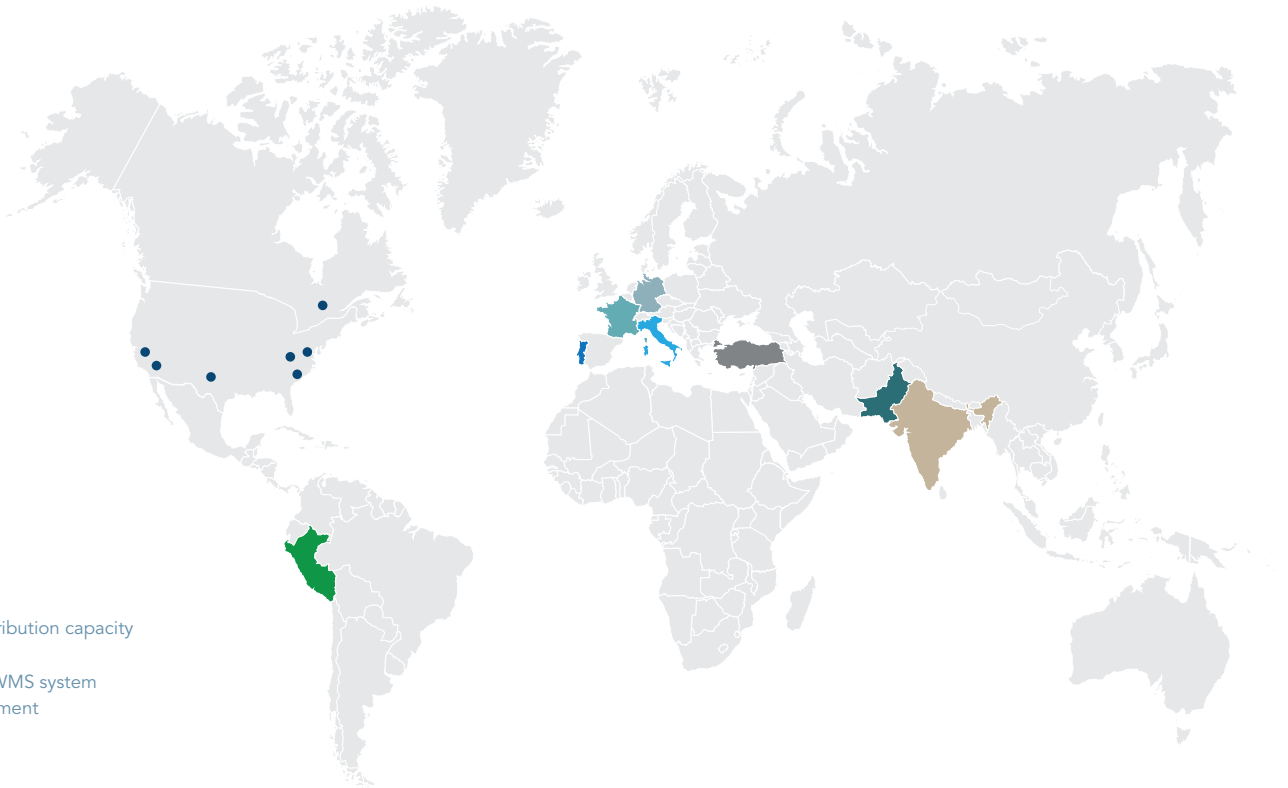
Primary relationship with factories across our product categories.

## NORTH AMERICAN PRODUCTION:

Manufacture, warehouse & distribution across 7 locations in North America.

- 2 West Coast
- 1 Central
- 3 East Coast
- 1 Canada

- Over 2.5M s.q. ft of distribution capacity
- Complete EDI services
- Fully integrated ERP & WMS system
- Direct to consumer shipment



### INDIA:

Utility, Fashion Top of Bed, Quilts, Sheets, Blanket, Throws, Dec Pillows



### TURKEY:

Blankets, Throws, Sheets, Towels, Flannel, Window



### GERMANY:

Utility, Sheets



### PORTUGAL:

Blankets, Throws, Matelassé, Flannel, Towels



### PAKISTAN:

Utility, Fashion Top of Bed



### ITALY:

Utility, (high end fiber), Sheets



### FRANCE:

Utility, (high end fiber)



### PERU:

Blankets, Throws (Alpaca)



# 360° MERCHANDISING STRATEGY

We have done extensive research and product testing to better validate and highlight the performance features and merchandising direction for our key partners.

## THE CHALLENGE

How can we deliver better guest experiences that will increase satisfaction and loyalty?

How can we engineer quality and durable products for the hospitality industry?

How can we design products that will improve hotel operations and increase efficiencies?

## THE METHODOLOGY

Develop a hypothesis based on common sense & guest data.

Conduct additional on property research to support hypothesis.

Engineer products specifically for the hotel environment that address guests wants and hotel operational needs.

Combine historic results and new research results for merchandising and product recommendations.



# KEECO CARES™

A multifaceted platform to affect positive change in our environmental and social spheres. Keeco is committed to a better tomorrow through our efforts today.

## ENVIRONMENTAL



### ENERGY EFFICIENT LIGHTING (EEL)

and participation in energy reduction plans company wide



### INDUSTRY LEADING PRODUCT DEVELOPMENT

for energy efficiency and recycled fibers



### FACILITIES RECYCLING AT 97% RATE

of corrugated & plastic, food scraps, etc.



### RECYCLING INITIATIVE

to increase use of recycled fibers wherever possible in the supply chain including GRS where applicable



### WALMART® GIGA-GURU® SUPPLIER

Giga-Gurus® have set a SMART goal (specific, measurable, achievable, relevant and time limited), agreed to share it publicly, and have reported avoiding emissions in the most recent reporting year.

## SOCIAL & WILDLIFE



### RESPONSIBILITY IN DOWN SOURCING & MANUFACTURING

ensures ethical treatment of birds and traceability



### C-TPAT CERTIFIED

to assist in the fight against terrorism



### ZERO TOLERANCE FOR UNPAID AND/OR CHILD LABOR

along with a focus on fair compensation



### A STRONG FOCUS ON MINIMIZING HUMAN RISK

at all points in supply chain



### PARTICIPATION IN GLOBAL ETHICAL AUDITS

Keeco is a member of Amfori which includes BSCI focusing on better social performance in global supply chains, BEPI which is focused on better environmental practices in supply chains. Keeco also is Oekotex certified.

# KEECO CARES™

## CERTIFICATIONS

### BUILDING A RESPONSIBLE SUPPLY CHAIN

Deliver improvements in responsible and ethical business practices globally – Social responsibility



### SUSTAINABLY SOURCED COTTON

BCI | Cotton Leads | Organic | Recycled



### RECYCLED POLYESTER

Generic | Branded



### NATURALS

RDS | ADFC | Tencel® | RWS



### SUSTAINABLE FACILITIES + PRODUCT

Higg Index | Oeko-Tex



# INTELLECTUAL PROPERTY

## **TRIA®**

Chambered Pillow



## **INFINITY®**

Gusset



## **DOWN LYOCCELL**

Blend



## **BEDLOCK®**

Secure Seal Zipper



## **LOFT LOCK®**

No-Shift Border



## **STAY FLUFF®**

Brick Layer Featherbed



## **HOOKLESS®**

Flex-On® Rings



## **ALTERNATING BAFFLE BOX**

Construction



# INTELLECTUAL PROPERTY

**FEATHERBEST®**



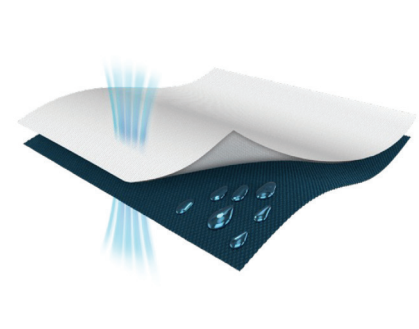
**DOWNAROUND®  
DOWN SURROUND®  
TOUCH OF DOWN®**



**BARRIER WEAVE®**



**LIQUIDRY®  
MIRACLE  
MEMBRANE®**



**SIMPLE FIT®**  
No Slip Skirt Design



**HYPERCLEAN®**



**SUPERSIDE®**



**ALLERREST  
FABRIC®**





# FUZE<sup>®</sup> ANTIMICROBIAL TECHNOLOGY

FUZE<sup>®</sup> AM is the most environmentally sustainable textile treatment technology available. It is a permanent, chemical-free technology that can be applied to any surface or textile to prevent and protect against odor causing bacteria and mold. Dedicated to sustainability, only a small amount of FUZE<sup>®</sup> AM is used, causing no harmful effects to you or the environment.



**Kills odor-causing and harmful pathogens**



**Eliminates and prevents the growth of mold and fungus**

**99%**

**Effective even after 100 washes!**



**Saves water using less water during application**



**Saves energy used to treat water!  
There is no wastewater after a FUZE<sup>®</sup> mist application**



# INDUSTRY LEADER

## IN UTILITY BEDDING

Keeco has established itself as the leader in utility bedding, providing hotels with innovative and high-quality products.

### **PRODUCT DEVELOPMENT**

Keeco invests heavily in research and development to stay ahead of market trends and meet evolving hotels needs. By identifying emerging guests preferences and conducting thorough market analysis, Keeco continually introduces innovative and functional bedding solutions that enhance comfort, convenience, and durability.

### **MARKET RESEARCH ANALYSIS**

Keeco market research analysis is a vital aspect of its success. The company invests in comprehensive market studies to gain valuable insights into guest preferences, industry trends, and competitive dynamics.

### **INTELLECTUAL PROPERTY**

Keeco actively invests in securing patents and trademarks to safeguard its unique utility bedding concepts. This strategic focus on IP protection allows Keeco to maintain a competitive edge in the market while fostering an environment of innovation and creativity.

### **INDUSTRY LEADER IN FIBER DEVELOPMENT**

Keeco continuously explores new materials and technologies to enhance the comfort, durability, and sustainability of its products.

# SUITE *sanctuary*

## SIMPLE COMFORT™



The Simple Comfort™ pillow provides the perfect blend of comfort and support. With its 200-thread count, 100% polyester cover, and Lite-Loft™ eco-friendly fiber filling, this pillow ensures a restful sleep night after night. Hypoallergenic, durable, and offering medium support, it's the ideal choice for all night comfort.

- 200 Thread Count
- Peachy® Polyester Cover
- Lite-Loft™ fiberfill made using recycled PET bottles

### MEDIUM SUPPORT PILLOWS

Item #	Size	Dim (in)
92227	STD	20 x 26
92228	Q	20 x 30
92229	K	20 x 36

## SUPRALOFT™



Discover the ultimate in comfort and support. The 200 thread count cover made from a perfect blend of 50% cotton and 50% polyester provides the durability of polyester and the soft touch and breathability of cotton. Filled with eco-friendly Supraloft™ fiber, it offers medium support and is hypoallergenic.

- 200 Thread Count
- 50% Cotton/50% Polyester Cover
- Supraloft™ fiberfill made using recycled PET bottles

### MEDIUM SUPPORT PILLOWS

Item #	Size	Dim (in)
1640567	STD	20 x 26
1643450	Q	20 x 30
1643451	K	20 x 36

## HEALTHCARE



Lite-Loft® fiberfill is made using recycled PET bottles, providing lightweight warmth and comfort while reducing plastic waste and supporting eco-friendly methods. Hand wash with mild soap and rinse with warm water when necessary; air dry.

- 180 Thread Count
- Nylon Cover
- Antimicrobial Treatment
- Lite-Loft™ fiberfill made using recycled PET bottles

### MEDIUM DENSITY PILLOW

Item #	Size	Dim (in)
89590	STD	20 x 26

# RESTFUL NIGHTS

BY PACIFIC COAST FEATHER

## LOVES TO BE WASHED®



Specially designed for durability and to maintain loft. With its 230 thread count 100% cotton cover, this pillow offers a luxurious touch and breathability. Featuring our innovative Loves to be Washed® fiber, a spring-like 3D structure fiber with a unique finishing treatment, it maintains its shape and loft wash after wash, making it a breeze to keep clean.

- 230 Thread Count, FUZE® AM Treated Cover
- 100% Cotton
- Features AllerRest® Fabric

### FIRM DENSITY PILLOW

Item #	Size	Dim (in)
1643466	STD	20 x 26
1643467	Q	20 x 30
1643468	K	20 x 36

## EVERLASTING LOFT®



Give your guests high-loft comfort with the Everlasting Loft® Pillow. The 230 thread count 100% cotton cover provides a soft touch and breathability. Filled with Lux-Loft® fiber, a highly resilient true down alternative with adjustable polyester clusters that provide the maximum comfort and support.

- 230 Thread Count, FUZE® AM Treated Cover
- 100% Cotton
- Features AllerRest® Fabric

### MEDIUM DENSITY PILLOW

Item #	Size	Dim (in)
1643478	STD	20 x 26
1643479	Q	20 x 30
1643480	K	20 x 36

## TRILLIUM™



Designed to provide a serene sleep experience with exquisite comfort and perfect support. Trillium™ is a true down alternative fiberfill. Carefully crafted to mimic the luxurious feel of genuine down, this premium fiberfill offers the perfect balance of plushness and adjustable support.

- 230 Thread Count, FUZE® AM Treated Cover
- 100% Cotton
- Features AllerRest® Fabric

### MEDIUM DENSITY PILLOW

Item #	Size	Dim (in)
1643475	STD	20 x 26
1643476	J	20 x 28
1643477	Q	20 x 30
1643536	K	20 x 36

# RESTFUL NIGHTS

BY PACIFIC COAST FEATHER

## MEMORY FLEX®



Give your guests a memorable experience with the Memory Flex® Pillow. Like memory foam, but smarter. The Memory Flex® fiber is engineered to mimic the same properties and sleep experience of memory foam. It adapts to the shape of your head and neck, cradling them with personalized support that relieves pressure points and reduces tossing and turning.

- 230 Thread Count, FUZE® AM Treated Cover
- 100% Cotton
- Features AllerRest® Fabric

### FIRM DENSITY PILLOW

Item #	Size	Dim (in)
1643472	STD	20 x 26
1643668	J	20 x 28
1643473	Q	20 x 30
1643474	K	20 x 36

## SUPERSIDE®

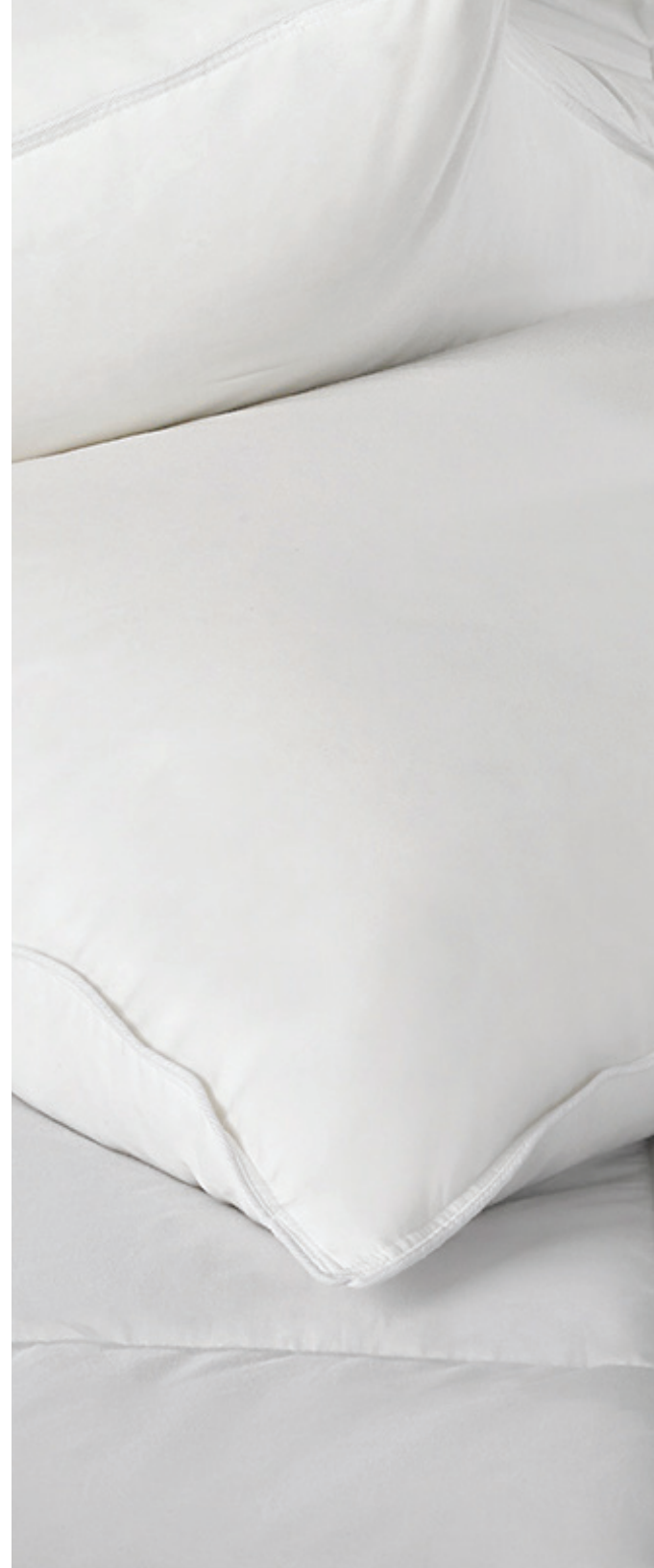


As your guest enters the room, ensure comfort is all around them with the Superside® pillow. The pillow construction features unique side gussets and a curved corner design that creates a higher profile for side sleepers and forces the fill to stay towards the middle of the pillow for all-night loft and comfort. Filled with Down Illusion™ fiber, a luxurious down-like loft and feel.

- 230 Thread Count, FUZE® AM Treated Cover
- 100% Cotton
- Features AllerRest® Fabric

### FIRM DENSITY PILLOW

Item #	Size	Dim (in)
96557	STD	17 x 26 x 3
96558	Q	17 x 30 x 3
96559	K	17 x 36 x 3





# PACIFIC COAST FEATHER

SINCE 1884

## FEATHERBEST®



Elevate your guests sleep to a new level of luxury with the Featherbest® Pillow. Meticulously engineered to ensure maximum comfort, this innovative construction eliminates pesky quills, providing a plush and cozy feel. Filled with our Resilia® feathers for extra fluffiness and resilient support.

- 300 Thread Count
- Brushed Cotton Cover
- Duck Feather Fill

Item #	Size	Dim (in)
25602	STD	20 x 26
25603	Q	20 x 30
25604	K	20 x 36

## TOUCH OF DOWN®



Our most popular pillow. The Touch of Down® Pillow is a pillow-in-a-pillow design. The outer pillow is filled with soft luxurious Down Lyocell and the inner pillow is filled with our Resilia® feathers. The construction is designed to maximize support and comfort while providing durability.

- 230 Thread Count
- 100% Cotton Cover
- Down Lyocell & Duck Feather

Item #	Size	Dim (in)
25418	STD	20 x 26
25403	Q	20 x 30
25605	K	20 x 36

## TRIA®



The Tria® pillow is a patented no-shift support pillow. The triple-chamber design enhances support and eliminates the need to readjust the pillow during the night. Internal triple chambers are filled with Resilia® feather fill and are surrounded by a Lyocell Down blend for luxurious, incredibly relaxing comfort.

- 230 Thread Count
- 100% Cotton Cover
- Down Lyocell & Duck Feather
- Triple Chamber

Item #	Size	Dim (in)
25606	STD	20 x 26
25607	Q	20 x 30
25608	K	20 x 36

# SYNTHETIC COMFORTERS & BLANKETS

## SUITE *sanctuary*

### CARBON BLANKET



Crafted from 100% Polyester Microfiber, this fabric utilizes the ShockGuard™ anti-static system with carbon fibers. It showcases a 3" Diamond Box pattern, Lockscroll™ stitching, and a 2" Bound edge. The Supraloft® polyester fiber integrated into the fabric includes an anti-shift/anti-clump feature, enhancing its softness and elegant drape.

- ShockGuard™ anti-static system reduces static buildup
- Luxury brushed feel
- Carbon fiber grid print adds a decorative flair

Item #	Size	Dim (in)
11711600158	F/Q	90 x 90
11711600159	K	108 x 90

## RESTFUL NIGHTS BY PACIFIC COAST FEATHER

### ROYALLOFT® COMFORTER



This blanket is hypoallergenic, durable, and offers all-season warmth, it's the ideal choice for all night comfort. Featuring eco-friendly fiberfill made using recycled PET bottles. Finished with a 100% cotton cover that features our AllerRest® fabric, providing a protective layer against allergens and dust mites. Additionally, the fabric is treated with FUZE® AM Defense, ensuring a cleaner and healthier sleep environment.

- 100% Cotton, FUZE® AM Treated Cover
- Features AllerRest® Fabric
- 10" Sewn Through Box featuring Lockscroll™ stitching

Item #	Size	Dim (in)
26011600384	F/Q	90 x 98
26011600385	K	108 x 98

# RESTFUL NIGHTS

BY PACIFIC COAST FEATHER

## TRILLIUM® BLANKET



Our Trillium® Blanket closely resembles the feel and comfort of an all down product. The blown fiber has an incredibly silky feel and down-like performance. The cover features our AllerRest® fabric, providing a protective layer against allergens and dust mites. Additionally, the fabric is treated with FUZE® AM Defense, ensuring a cleaner and healthier sleep environment. 5" scrolled diamond pattern allows the fiber to loft but not to migrate.

- Features AllerRest® Fabric Treated with FUZE® AM
- 5" Scrolled Diamond Pattern

Item #	Size	Dim (in)
07-XHBL000006Q	F/Q	90 x 96
07-XHBL000006K	K	108 x 96

## ASSURE™ BLANKET



The Assure® blanket is the most durable filled blanket on the market. Filled with our exclusive Assure® continuous filament polyester fiber, each blanket only gets loftier as they are laundered. The fiber resists clumping and matting and has a spun silk feel to it. The cover features our AllerRest® fabric and is treated with FUZE® AM Defense. The 7" scrolled box pattern allows the fiber to loft but not to migrate.

- Features AllerRest® Fabric Treated with FUZE® AM
- 7" Scrolled Box Pattern
- Lockscroll™ stitching reduces shifting and fill migration

Item #	Size	Dim (in)
11711600160	F/Q	90 x 96
11711600161	K	108 x 96

## TRUELOFT® COMFORTER



Filled with fresh Infusion® fiber which provides the benefits of antimicrobial with an added silky soft feel. The cover features AllerRest® fabric, and our Shrinkguard™ fabric, a treatment which controls and reduces shrinkage after wash. Additionally, the fabric is treated with FUZE® AM Defense, ensuring a cleaner and healthier sleep environment. It has a 10" sewn through box design with Lockscroll™ stitching, which reduces shifting and migration.

- AllerRest® & Shrinkguard™ Fabric Treated with FUZE® AM
- 10" Sewn Through Box Design
- Lockscroll™ stitching reduces shifting and fill migration

Item #	Size	Dim (in)
26426300199	F/Q	90 x 96
26426300200	K	108 x 96



# PACIFIC COAST FEATHER

SINCE 1884

## NATURAL BALANCE™ DOWN BLANKET



The Natural Balance™ Down Blanket is filled with our patented blend of down/lyocell. The lyocell fiber has natural moisture wicking properties which provide a cooler night's rest and improved washability. The cover features our AllerRest® fabric which provides a protective layer against allergens and dust mites. Barrier Weave specially finished fabric means down and feather won't sneak out.

- Features AllerRest® & Barrier Weave® Fabric
- Patented Down Lyocell Fill

Item #	Size	Dim (in)
74289	F/Q	90 x 96
74290	K	108 x 96

## NATURAL BALANCE™ DOWN COMFORTER



The Natural Balance™ Down Comforter is filled with our patented blend of down/lyocell. The lyocell fiber has natural moisture wicking properties which provide a cooler night's rest and improved washability. The cover features our AllerRest® fabric which provides a protective layer against allergens and dust mites. Barrier Weave specially finished fabric means down and feather won't sneak out.

- Features AllerRest® & Barrier Weave® Fabric
- Patented Down Lyocell Fill

Item #	Size	Dim (in)
74291	F/Q	90 x 96
74292	K	108 x 96



### SIMPLE FIT® MATTRESS PAD



The Simple Fit® mattress pad is the economical way to protect the mattress investment. A 100% polyester top filled with 4 ounces per square yard for comfort. Finished with a fitted skirt to fit mattress up to 16" deep.

- 100% Polyester Top
- Fitted Skirt Fits Mattress up to 16"

Item #	Size	Dim (in)
07-MP13-0002FXL	FXL	54 x 80
07-MP13-0002Q	Q	60 x 80
07-MP13-0002K	K	76 x 80

### PERFECT SUPPORT™ PILLOW TOPPER



The perfect upgrade to transform your guests sleep experience. With a generous 20 ounces per square yard fill, our mattress topper offers the perfect balance of plushness and support. The high-quality cotton fabric offers breathability and is treated with FUZE® AM Defense. Finished with a fitted skirt to fit mattress up to 20" deep.

- FUZE® AM Defense
- Fitted Skirt Fits Mattress up to 20"

Item #	Size	Dim (in)
07-MP14-0002FXL	FXL	54 x 80
07-MP14-0002Q	Q	60 x 80
07-MP14-0002K	K	76 x 80

### ULTRA-SUPPORT™ MATTRESS TOPPER



Extend the life of your mattress with the Ultra-Support mattress topper. The 24 ounces per square yard fill provides lofty and plush comfort. The high-quality cotton fabric offers breathability and is treated with FUZE® AM Defense. Engineered for long-lasting durability and featuring reversible design. Finished with a fitted skirt to fit mattress up to 20" deep.

- FUZE® AM Defense
- Fitted Skirt Fits Mattress up to 20"

Item #	Size	Dim (in)
07-MP18-0002FXL	FXL	54 x 80
07-MP18-0002Q	Q	60 x 80
07-MP18-0002K	K	78 x 80





# PACIFIC COAST FEATHER

SINCE 1884

## STAY FLUFF® FEATHER BED



Patented Stay Fluff® Construction provides the most luxurious comfort while minimizing feather shifting. Less chance of shifting makes this feather bed easier to fluff. Feather Beds provide support to the spinal column relieving stress on pressure points throughout the body for an incredibly restful night's sleep. Filled with our Resilia® feathers for extra fluffiness and resilient support.

- 230 Thread Count, 100% Cotton Cover
- Features AllerRest® & Barrier Weave® Fabric

Item #	Size	Dim (in)
25620	FXL	54 x 80
25621	F/Q	60 x 80
25622	K	76 x 80

## FEATHER BED ZIP COVER



The 100% cotton protector slips easily over the featherbed where it can then be fully enclosed by the zippered bottom. When it's time for care, refresh your protector in your washing machine.

- 230 Thread Count
- Zippered Bottom

Item #	Size	Dim (in)
99504	FXL	54 x 80
99505	F/Q	60 x 80
99506	K	76 x 80



# MATTRESS & PILLOW PROTECTORS

Encasements and protectors shield your mattress from stains, spills, pests, and allergens. Our products extend the life of your assets, while improving comfort and hygiene for your guests. Offer your guests the stay they deserve: a healthy sleep environment, free from liquid damage and protected from pests, dust mites, and other allergens.

**1 in 3**  
PEOPLE EAT &  
DRINK IN BED

**1 in 3**  
CHILDREN WET  
THE BED

**1 in 13**  
ADULTS SUFFER  
FROM INCONTINENCE

**PROTECTORS AND ENCASEMENTS PAY FOR THEMSELVES  
IN JUST ONE DEEP CLEANING SAVED**

## MAXIMIZE PROTECTION

For maximum protection start at the bottom. Box springs are the ideal breeding ground for bed bugs.

**1** ENCASE YOUR  
BOX SPRING

**2** ENCASE YOUR  
MATTRESS

**3** ADD A FITTED  
PROTECTOR

**4** PROTECT  
YOUR PILLOWS

# SUITE *sanctuary*

## SIMPLE COMFORT™



Pillow protectors help to extend the life of your pillows and reduce laundering needs. The Simple Comfort™ Pillow Protector is 180 thread count, 55% cotton and 45% polyester fabric construction and comes with either in a rust proof zipper closure or envelope closure.

- 180 Thread Count
- 55% Cotton/45% Polyester
- Rust Proof Zipper Closure

Item #	Size	Dim (in)
07-PZ000225S	STD	20 x 26
07-PZ000225Q	Q	20 x 30
07-PZ000225K	K	20 x 36

# RESTFUL NIGHTS BY PACIFIC COAST FEATHER

## COTTONRITE®



The Cottonrite® pillow protector is a 230 thread 100% cotton construction with a rust proof zipper closure. The pillow protector features our AllergySmart® barrier which keeps allergens from penetrating the pillow. Pillow protectors help to extend the life of your pillows and reduce laundering needs.

- 230 Thread Count
- 100% Cotton
- AllergySmart® Barrier
- Rust Proof Zipper Closure

Item #	Size	Dim (in)
07-PPZ000041S	STD	20 x 26
07-PPZ000041Q	Q	20 x 30
07-PPZ000041K	K	20 x 36

# PROTECT·A·BED®

## ALLERZIP®



Ultimate protection against germs, microbes and odor with patented BugLock® zip closure that fully encases your pillow. Featuring LiquiDry® Layer, an impenetrable barrier that is both 100% waterproof while remaining breathable and whisper quiet, leaves your pillow cool, dry and comfortable to sleep on.

- Patented BugLock® Zip Closure
- LiquiDry® Layer
- Rust Proof Zipper Closure

Item #	Size	Dim (in)
07-PP0011S	S	20 x 26
07-PP0011Q	Q	20 x 30
07-PP0011K	K	20 x 36





# PROTECT·A·BED™

## BED PURE MATTRESS ENCASEMENT



Bed bug entry and escape proof with added waterproof protection on the sleep surface to protect your mattress against stains and spills.

- Waterproof Top Surface
- Viral Barrier
- Easy Installation

Item #	Size	Dim (in)
07-ME0079T	T	38 x 75 x 10
07-ME0079TXL	TXL	38 x 80 x 10
07-ME0079F	F	54 x 75 x 10
07-ME0079FXL	FXL	54 x 80 x 10
07-ME0079Q	Q	60 x 80 x 10
07-ME0079K	K	76 x 80 x 10

## BED PURE BOX SPRING ENCASEMENT



This non-waterproof encasement eliminates a bed bug's favorite harborage point and aids in early detection.

- Industrial-Strength Fabric
- Non-Waterproof
- Ideal for Use on Box Spring
- Easy Care

Item #	Size	Dim (in)
07-ME0075T	T	38 x 75 x 9
07-ME0075TXL	TXL	38 x 80 x 9
07-ME0075F	F	54 x 75 x 9
07-ME0075FXL	FXL	54 x 80 x 9
07-ME0075Q	Q	60 x 80 x 9

# PROTECT·A·BED®

## BASIC MATTRESS PROTECTOR



Our Basic fitted sheet style waterproof protector keeps the bed clean and comfortable allowing your guests to have a good night's sleep. The flexible fit allows for an easy installation every time.

- 100% Polyester
- Waterproof

Item #	Size	Dim (in)
07-MPR0021T	T	38 x 75 x 10
07-MPR0021TXL	TXL	38 x 80 x 10
07-MPR0021FXL	FXL	54 x 80 x 10
07-MPR0021Q	Q	60 x 80 x 14
07-MPR0021HK	HK	72 x 80 x 14
07-MPR0021K	K	76 x 80 x 14

## PREMIUM MATTRESS PROTECTOR



With a cotton terry towel surface for superior comfort and excellent absorbency, this mattress protector provides ultimate protection against germs, microbes and odor.

- 80% Cotton / 20% Terry Knit
- Moisture Wicking
- Super Soft Sleeping Surface

Item #	Size	Dim (in)
07-MPR0010T	T	38 x 75 x 14
07-MPR0010TXL	TXL	38 x 80 x 14
07-MPR0010FXL	FXL	54 x 80 x 14
07-MPR0010Q	Q	60 x 80 x 18
07-MPR0010K	K	76 x 80 x 18

## BUG LOCK PLUS MATTRESS ENCASEMENT



Our best selling encasement, BugLock® Plus protects the mattress from bed bugs and offers top and side waterproofing to protect against stains and spills.

- Waterproof Top Surface
- Viral Barrier
- Easy Installation
- New! Side Protection

Item #	Size	Dim (in)
07-ME0065T	T 8"	38 x 75 x 8
07-ME0067TXL	TXL 8"	38 x 80 x 8
07-ME0067FXL	FXL 8"	54 x 80 x 8
07-ME0071FXL	FXL 12"	54 x 80 x 12
07-ME0070Q	Q 10"	60 x 80 x 10
07-ME0071Q	Q 12"	60 x 80 x 12
07-ME0070HK	HK 10"	72 x 80 x 10
07-ME0073HK	HK 12"	72 x 80 x 12
07-ME0070K	K 10"	76 x 80 x 10
07-ME0071K	K 12"	76 x 80 x 12



# PROTECT·A·BED®

## BUG LOCK PLUS BOX SPRING ENCASEMENT



Ultimate protection against germs, microbes and odor with 6-sided protection that fully encases your mattress.

- 100% Polyester
- Moisture Wicking
- Patented BugLock® Zip Closure

Item #	Size	Dim (in)
07-ME0002T	T 9"	38 x 75 x 9
07-ME0006TXL	TXL 9"	38 x 80 x 6
07-ME0006FXL	FXL 6"	54 x 80 x 6
07-ME0002FXL	FXL 9"	54 x 80 x 9
07-ME0006Q	Q 6"	60 x 80 x 6
07-ME0002Q	Q 9"	60 x 80 x 9
07-ME0002K	K 9"	76 x 80 x 9
07-ME0002HKS	HK 9"	36 x 80 x 9

## ALLERZIP® ENCASEMENT



For maximum protection against stains, spills, and allergens, the AllerZip® Smooth encasement features LiquiDry® on all 6 sides.

- 100% Polyester
- Moisture Wicking
- Patented BugLock® Zip Closure

Item #	Size	Dim (in)
07-ME0010T	T 6"	38 x 75 x 6
07-ME0014T	T 9"	38 x 75 x 9
07-ME0022TXL	TXL 6"	38 x 80 x 6
07-ME0029TXL	TXL 9"	38 x 80 x 9
07-ME0030FXL	FXL 9"	54 x 80 x 9
07-ME0040FXL	FXL 13"	54 x 80 x 13
07-ME0023Q	Q 6"	60 x 80 x 6
07-ME0030Q	Q 9"	60 x 80 x 9
07-ME0046Q	Q 13"	60 x 80 x 13
07-ME0033HK	HK 9"	72 x 80 x 9
07-ME0058HK	HK 13"	72 x 80 x 13
07-ME0023K	K 6"	76 x 80 x 6





# INDUSTRY LEADER

## IN FASHION BEDDING

As the leader in fashion bedding, Keeco continues to push boundaries and raise the bar in terms of design, quality, and innovation. The company's unwavering commitment to product development, combined with its use of luxury fabrics and materials, has earned Keeco a loyal customer base and a prominent position in the market.

### **PRODUCT DEVELOPMENT**

Keeco understands that the successful development of hospitality bedding is a dynamic and ongoing process. We align the operational needs of the individual hotels while maintaining focus on quality and guest comfort. Keeco continually introduces innovative and functional bedding solutions that enhance comfort, convenience, and durability.

### **MARKET RESEARCH ANALYSIS**

Keeco continually conducts market research to understand the current trends, challenges, and opportunities in the hospitality industry. By identifying the specific needs and preferences of hotel management and recognizing that guest comfort is the ultimate goal, we develop products that meet and exceed expectations.

### **SUSTAINABILITY**

Given the increasing emphasis on sustainability, Keeco incorporates eco-friendly materials and practices into our product development process. Our dedication to sustainability aligns with the values of the hotel brands and the environmentally conscious guest.

### **INDUSTRY LEADING DESIGN TEAM**

Our in-house design team is a collective of creative minds dedicated to transforming ideas into tangible, innovative products. With a keen understanding of aesthetics and functionality, they collaborate seamlessly to craft designs that resonate with hotel guests and elevate the guest room presentation.



# DECORATIVE TOP OF BED

## **IN-HOUSE DESIGN TEAM**

In-house design team with deep understanding of brand identity and product vision that can offer a strategic advantage when it comes to product development.

## **TREND ANALYSIS**

Utilize trend analysis techniques ensuring our fashion bedding remains fresh, appealing and relevant.

## **HIGHEST QUALITY STANDARDS**

Performance driven design mindset resulting in the creation of products that meet the high quality standards necessary for hospitality.





# LINEN

## **WIDE VARIETY OF OPTIONS**

Keeco offers a variety of linen options utilizing a variety of different fibers, fiber blends, and finishing technologies to achieve comfort levels designed to create the ultimate guest experience.

## **PRODUCT DEVELOPMENT**

Keeco prioritizes quality, performance, and durability allowing our development teams to create items that meet and exceed the rigorous hotel standard requirements. We utilize guest research and comments to ensure that we maintain the proper balance of durability and comfort.

## **SUSTAINABILITY**

Keeco believes that environmental responsibility needs to be an integral part of the product development and sourcing process. This allows us to contribute to a more sustainable future for everyone.

## **DURABILITY AND TESTING**

Keeco ensures the durability of our linens meet the hospitality standards by choosing the correct fibers in the proper woven constructions. We then conduct rigorous testing and only select the fabrics that exceed the high standards in hospitality.



NEW!

# SUITE *sanctuary*



## LINEN PROGRAM WITH FUZE® TECHNOLOGY

### FABRIC

100% Polyester, Microfiber, 85 GSM with FUZE® AM treatment

### SEWING

Color coded threading for easy size identification

(Full- Pink, Queen- Gold, King- Light Blue)

### FEATURES & BENEFITS

- Luxurious softtouch Microfiber fabric
- FUZE® AM treatment is permanent and all natural
- Hyper-evaporation for quicker drying and a cooler rest
- Reduced microfiber shed with FUZE® AM treatment for a more ecologically friendly product

Product	Item #	Size	Dim (in)
Pillowcase	28127903358	Standard	20 x 30
Pillowcase	28127903359	Queen	20 x 36
Pillowcase	28127903360	King	20 x 40
Flat Sheet	28127903361	Full XL	80 x 110
Flat Sheet	28127903362	Queen	88 x 110
Flat Sheet	28127903363	King	106 x 110
Fitted Sheet	28127903367	Full XL	54 x 80 x 15
Fitted Sheet	28127903368	Queen	60 x 80 x 15
Fitted Sheet	28127903369	King	78 x 80 x 15



# INDUSTRY LEADER

## IN BATH

### **PRODUCT DEVELOPMENT**

Keeco's innovative shower curtains and exceptional developments in bath towels show our dedication to transforming the bath experience into a luxurious and hassle-free affair. Our development team chooses high quality materials and utilizes innovative weaving techniques that result in long lasting, quick drying products that feel great.

### **MARKET RESEARCH ANALYSIS**

Keeco understands the needs of the hospitality industry for bath products that offer comfort and durability. We conduct market research with hotel owners, property managers and guests to gain insight into what is needed for high performing, luxurious bath products.

### **INTELLECTUAL PROPERTY**

Keeco actively invests in securing patents and trademarks to safeguard its unique, high performing bath products. This strategic focus on IP protections allows Keeco to maintain a competitive edge in the market while fostering an environment of innovation and creativity.

### **INDUSTRY LEADER**

Keeco is an industry leader that is often imitated but never duplicated. We are revolutionizing the hospitality industry with our original Hookless technology and setting new standards in both functionality and style.



# TERRY

Keeco develops towel collections that meet the operational needs of the client and the comfort needs of the guest. Utilizing Sustainable practices by using premium yarns and innovative construction techniques that meet the quality and performance requirements.

## **QUALITY MATERIALS**

We invest in premium materials and thoughtful production processes to create soft luxurious superior quality towels that hotel guests will love. Our development team is continuously looking for the next generation of materials that can further enhance the performance and feel of the terry products we develop.

## **PRODUCT DEVELOPMENT**

Keeco utilize high quality performance standards during the development process to create products that can withstand the rigorous hotel laundering requirements. The use of premium yarns and innovative construction techniques allows us to create items that feel great and meet the performance requirements needed in hospitality.

## **ENVIRONMENTAL RESPONSIBILITY**

Keeco emphasize the importance of sustainability in our development process. We incorporate both natural and recycled materials in our terry products and only partner with manufacturers who follow ethical and sustainable manufacturing practices





# HOOKLESS®

HANGS IN SECONDS

The increased efficiency to install and remove an original Hookless® shower curtain saves housekeeping labor, time and costs while maintaining your guests' bathrooms. It's A Snap!® polyester liners with magnets also increase the efficiency and ease of installing or removing each replacement liner during regular wash and care. It's A Snap!® polyester liners with magnets give housekeepers the ability to launder without the need to remove the entire shower curtain.

## 3-IN-1 TECHNOLOGY

No Hooks  
Needed

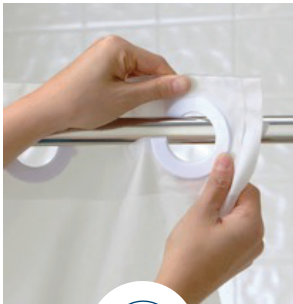
No Need to Remove  
Shower Bar

Installs Right Over  
The Bar



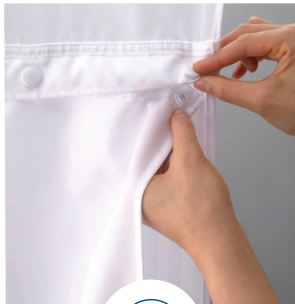
1

**SHOWER CURTAIN**  
Refresh your bathroom  
décor effortlessly



2

**FLEX-ON®**  
Built-in Rings! Install in seconds  
without removing the rod



3

**IT'S A SNAP®**  
Water resistant liner  
snaps on and off



# SAVE TIME & MONEY

Using the original Hookless® shower curtains, housekeeping will save time, which saves properties money.

## INSTALL/REMOVAL TIMES

WITH HOOKS

**10**  
MINUTES

HOOKLESS®

**1.5**  
MINUTES

TIME SAVINGS

**8.5**  
MINUTES

COST SAVINGS

**\$3,400**  
PER YEAR\*

### GOOD



Our standard polyester curtain with exclusive Hookless® system.

### BETTER



Upgraded with a sheer window.

### BEST



Includes chrome rings and our It's A Snap® Liner

\*If curtain is changed 12 times per year in a 200 room property.

8.5 (minutes saved) x 12 (curtain changes) = 102 minutes (1.7 hours) per year per room 1.7 hours x \$10.00/hour wage = \$17.00 per room per year x 200 rooms = \$3,400 savings

# VINYL



Constructed of 100% 8-gauge vinyl and easily wipes clean for long-term use. Solid pattern available with a translucent vinyl window and flat matching Flex-On® rings. Also available in a Pin Dot pattern with no window and flat matching rings.

## Available Colors:



white

beige

Item #	Color	Size	Window	Flex On® Ring	Liner
HBH08VIS01	White	71x74	Clear Vinyl	Matching Flat	No Liner
HBH08VIS05	Beige	71x74	Clear Vinyl	Matching Flat	No Liner
HBH04PDT01	White	71x74	No Window	Matching Flat	No Liner
HBH04PDT01L	White	71x77	No Window	Matching Flat	No Liner
HBH04PDT05	Beige	71x74	No Window	Matching Flat	No Liner
HBH10GA014274	White	42x74	No Window	Matching Flat	No Liner
HBH10GA054274	Beige	42x74	No Window	Matching Flat	No Liner

## PLAIN WEAVE



Available in 100% polyester or 100% nylon. Hookless® Flex-On® rings add function to this no-fuss design. Upgrade with a sheer window and liner.

### Available Colors:



white

beige

Item #	Color	Size	Window	Flex On® Ring	Repl. Liner
HBH31LIN01	White Nylon	71x74	No Window	Matching Flat	No Liner
HBH40PLW01	White	71x74	No Window	Matching Flat	No Liner
HBH40PLW01X	White	71x77	No Window	Matching Flat	No Liner
HBH40PLW05	Beige	71x74	No Window	Matching Flat	No Liner
HBH40PLW05X	Beige	71x77	No Window	Matching Flat	No Liner
HBH40MYS0174	White	71x74	Sheer Poly	Matching Flat	No Liner
HBH49MYS01X	White	71x77	Sheer Poly	Matching Flat	No Liner
HBH49MYS05X	Beige	71x77	Sheer Poly	Matching Flat	No Liner
HBH49MYS01SL74	White	71x74	Sheer Poly	Chrome Raised	HBH40SL0154
HBH49MYS01SL77	White	71x77	Sheer Poly	Chrome Raised	HBH40SL0157
HBH40TPU7174	White	71x74	No Window	Matching Flat	No Liner
HBH40TPU7177	White	71x77	No Window	Matching Flat	No Liner



# ESCAPE



Form meets function with the Escape shower curtain program. Satin accent stripes add a decorative flair to the low maintenance plain weave fabric.

Item #	Color	Size	Window	Flex On® Ring	Repl. Liner
HBH40E257	White/White	71x74	Sheer Poly	Chrome Raised	HBH40SL0154
HBH40MYS0101SL77	White/White	71x77	Sheer Poly	Chrome Raised	HBH40SL0157
HBH40ES220	White/Brown	71x74	Sheer Poly	Chrome Raised	HBH40SL0154
HBH40MYS0129SL77	White/Brown	71x77	Sheer Poly	Chrome Raised	HBH40SL0157
HBH40MYS0110SL74	White/Black	71x74	Sheer Poly	Chrome Raised	HBH40SL0154
HBH40MYS0110SL77	White/Black	71x77	Sheer Poly	Chrome Raised	HBH40SL0157
HBH40ES221	Sand/Brown	71x74	Sheer Poly	Chrome Raised	HBH40SL0554
HBH40MYS0529SL77	Sand/Brown	71x77	Sheer Poly	Chrome Raised	HBH40SL0557



# BOXED STRIPE



The top-selling Boxed Stitched curtain creates a visual effect of multiple rectangles. Constructed of 100% polyester fabric, it features matching Flex-On® rings and weighted corner magnets. Also available in upgraded sheer voile window with liner.

**Available Colors:**



white

beige

Item #	Color	Size	Window	Flex On® Ring	Repl. Liner
HBH43LIT01	White	71x74	No Window	Matching Flat	No Liner
HBH43LIT01X	White	71x77	No Window	Matching Flat	No Liner
HBH43LIT01SX	White	42x74	No Window	Matching Flat	No Liner
HBH43LIT05	Beige	71x74	No Window	Matching Flat	No Liner
HBH43MYS01	White	71x74	Sheer Poly	Matching Flat	No Liner
HBH43MYS0177	White	71x77	Sheer Poly	Matching Flat	No Liner
HBH43MYS01SL77	White	71x77	Sheer Poly	Matching Flat	HBH40SL0157
HBH43MYS0180	White	71x80	Sheer Poly	Matching Flat	No Liner

# MINI WAFFLE



The petite spa-like pattern of our Mini Waffle curtain is constructed of 100% polyester and features the concealed ring header for a sleek appearance. Includes liner and available with and without window.

**Available Colors:**



white

Item #	Color	Size	Window	Flex On® Ring	Repl. Liner
HBH52H101X	White	71x77	Sheer Poly	Concealed Ring	HBH40SL0157
HBH89B01SL77	White	71x77	No Window	Matching Flat	HBH40SL0172
HBH89MYS01SL77	White	71x77	Sheer Poly	Chrome Raised	HBH40SL0157



## WAVES

Waves features a two-toned printed wave pattern in white, with grey and black print.



Item #	Color	Size	Window	Flex On® Ring	Repl. Liner
HBH49WAV01SL77	White/Grey	71x77	Sheer Poly	Chrome Raised	HBH40SL0157



## CHECKERBOARD

Checkerboard is a unique sheer and solid check weave pattern, constructed of 100% polyester. The check weave textured pattern extends through the sheer voile window for added style.



Item #	Color	Size	Window	Flex On® Ring	Repl. Liner
HBH65D201X	White	71x77	Textured	Chrome Raised	HBH40SL0157





## DOBBY DIAMOND

The dobbly diamond pattern brings depth and texture to this 100% polyester easy care fabric. Features matching Flex-On® rings and corner magnets.

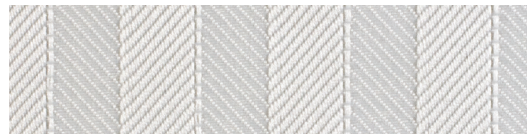


Item #	Color	Size	Window	Flex On® Ring	Repl. Liner
HBH44ENG01	White	71x74	No Window	Matching Flat	No Liner
HBH44ENG01X	White	71x77	No Window	Matching Flat	No Liner



## HERRINGBONE

The Herringbone curtain, a brand standard for many of the leading hotel chains is a 1/2" herringbone weave constructed in 100% polyester for a sophisticated look.



Item #	Color	Size	Window	Flex On® Ring	Repl. Liner
HBH53DTB01CR	White	71x74	Sheer Poly	Chrome Raised	HBH40SL0154
HBH53DTB01CRX	White	71x77	Sheer Poly	Chrome Raised	HBH40SL0557
HBH53DTB05CRX	Beige	71x77	Sheer Poly	Chrome Raised	HBH40SL0557





## EMBOSSED

Highlighted by a moiré' tone on tone pattern, the Embossed curtain is constructed of 100% polyester with matching Flex-On® rings and weighted corner magnets.



Item #	Color	Size	Window	Flex On® Ring	Repl. Liner
HBH01EBM01	White	71x74	No Window	Matching Flat	No Liner
HBH01EBM05	Beige	71x74	No Window	Matching Flat	No Liner



## MAJOR BUBBLE

Major Bubble combines the subtle water-effect pattern of moiré on 100% polyester enhanced with a bubble PEVA window. Features matching Flex-On® rings and weighted corner magnets.



Item #	Color	Size	Window	Flex On® Ring	Repl. Liner
HBH41BUB01W	White	71x77	Bubble Peva	Matching Flat	No Liner
HBH41BUB05W	Beige	71x77	Bubble Peva	Matching Flat	No Liner



## CORAL

The Coral curtain is made of 100% polyester fabric embellished with a double weaved, puffed coral pattern. The sheer window adds an airy feeling. The coral pattern matches many top of bed programs.



Item #	Color	Size	Window	Flex On® Ring	Repl. Liner
HBH47CJ01	White	71x77	Sheer Poly	Chrome Raised	HBH40SL0157



## DAYTONA

Daytona is the newest addition to the sustainable line of Hookless® items. This durable Hookless shower curtain has a 1/2" checkerboard pattern made of 100% RePET recycled polyester.

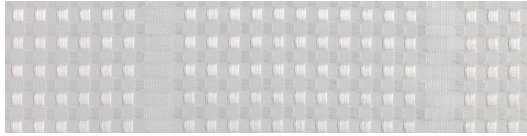


Item #	Color	Size	Window	Flex On® Ring	Repl. Liner
HBH72PTM0177	White	71x77	Sheer Poly	Matching Flat	No Liner



## ALEXANDRIA

Alexandria is a recycled Hookless® shower curtain in a basket weave pattern. Made of 100% RePET recycled polyester and featuring our It's A Snap!® Liner which helps to extend the life of the shower curtain.



Item #	Color	Size	Window	Flex On® Ring	Repl. Liner
HBH20MPT01SL	White	71x77	Sheer Poly	Chrome Raised	HBH40SL0157



## IT'S A SNAP!® LINERS

We have provided housekeeping with a more efficient way to replace shower curtain liners. It's A Snap!® polyester liners with magnets are more accessible and detachable.

Item #	Color	Dim (in)	Fits Curtain
HBH40SL0154	White	70 x 54	71 x 74 or 71 x 72
HBH40SL0157	White	70 x 57	71x77
HBH40SL0557	Beige	70 x 57	71x77
HBH19SL0157 - RPET	White	70 x 57	71x77
HBH14SL0957 - PEVA	Frost	70 x 57	71x77

CONTACT INFORMATION:

E-mail: [hospitalityinfo@Lkeeco.com](mailto:hospitalityinfo@Lkeeco.com)

Web: [www.keecohospitality.com](http://www.keecohospitality.com)

