

# I'VE GOT BEDBUGS. NOW WHAT?



## LET JT EATON HELP!

The JT EATON™ KILLS BEDBUGS PRODUCT LINE offers several solutions. Combined with laundering, vacuuming, Lock-Up® TOTAL ENCASEMENTS and CLIMBUP®!



### LOCK-UP® TOTAL ENCASEMENT

- Trapped bugs are “locked-up” while invading bugs are locked out.
- Helps prevent the spread of bedbugs and dust mites.
- Zipper lock feature prevents bedbugs and dust mites from getting to mattress.
- Certified for bedbug and dust mite protection.

### STEP 1

Clean the room. Start by removing your bed linens and laundering them in hot water. (If a comforter or other bedding cannot be washed, heat in dryer at highest heat for at least twenty minutes until bugs are killed.) Wash and dry clothes and place them in black trash bags and seal them to control any bedbugs (eggs, larvae and adults) until you have sprayed the room. Remove clutter and vacuum everywhere including mattresses, cracks and crevices. Don't forget to empty your vacuum immediately into a plastic, sealable bag and place in trash to prevent reinfestation.

### STEP 2

Dismantle everything! When the room is down to the basic furniture, remove drawers from desks and dressers and take apart bed frames. These actions can expose bedbug hideouts. Use **KILLS BEDBUGS #204 Series** (Red Label) on suspected areas. The unique oil-based pyrethrin spray will offer quick knockdown and control, and is labeled for use in a wide range of areas, including mattresses, box springs, wall-ceiling joints, baseboards, behind and underneath furniture, cushions and furnishings. Make sure you get the seams of the mattress and box springs. Other first treatment options include **KILLS BEDBUGS ULTRA #218 Series** or **KILLS BED BUGS PLUS #217**.

### STEP 3

Seal openings. But before you caulk around areas where pipes and wires penetrate the floor or walls (around electrical outlets, cracks in the baseboards or door frames for example), use **KILLS BEDBUGS AND CRAWLING INSECTS POWDER #203** (Green Label) in the openings. This Diatomaceous Earth powder made from freshwater diatoms will offer long-lasting protection against these tiny pests. Re-apply if product becomes wet.

### STEP 4

Prefer water base product? **KILLS BEDBUGS II #207 Series** (Blue Label) is a synthetic pyrethroid that offers quick kill and acts as a deterrent to invading bedbugs. It too can be used on mattresses and other furnishings, as well as your home's interior perimeter. Other second treatment options include **KILLS BEDBUGS ULTRA #218 Series**, **KILLS BED BUGS PLUS #217** or **KILLS BEDBUGS, TICKS AND MOSQUITOES #209 Series**.

### STEP 5

Capture any missed bedbugs and confirm if your chemical treatment is working. Apply **CLIMBUP®** around the legs of your bed and other furniture. If bedbugs continue to be a problem, reapply chemical treatment.

### STEP 6

Prevent reinfestation! One of the most common ways for homes to become infested is bedbugs that arrive via the seams of your luggage when returning from a trip. Reduce that risk to your home by using **JT EATON™ KILLS BEDBUGS, TICKS AND MOSQUITOES #209 Series** (Yellow Label) on your suitcase and other travel items before traveling. Also great when camping or hiking.

### JT EATON™ KILLS BEDBUGS INSECTICIDE

- Oil-based natural Pyrethrin spray offers quick knockdown, kill and control over bedbugs and other labeled pests.
- Can be used for a variety of bedbug harborage areas, including mattresses, wall-ceiling joints, baseboards, behind and underneath furniture, cushions, furnishings, etc.



### JT EATON™ KILLS BEDBUGS AND CRAWLING INSECTS POWDER

- Featuring a Diatomaceous Earth, made from Freshwater Diatoms.
- Kills bedbugs and other labeled pests which **never** become resistant to this product.
- Can be used in many areas that liquid sprays cannot.



### JT EATON™ KILLS BEDBUGS II INSECTICIDE

- Water-based synthetic Deltamethrin spray provides low odor and fast killing action.
- Can be used for a variety of bedbug harborage areas, including mattresses, wall-ceiling joints, baseboards, or behind and underneath furniture, cushions and furnishings.



### CLIMBUP®

- Capture bedbugs before they can reach your bed.
- Monitor your bedbug treatments.



### JT EATON™ KILLS BEDBUGS, TICKS AND MOSQUITOES INSECTICIDE

- Water-based Permethrin spray repels and kills bedbugs, ticks, mosquitoes and many other labeled pests.
- Apply to mattresses, tents, clothing, mosquito netting, backpacks, sleeping bags and camping gear. Apply to luggage before traveling.



### JT EATON™ KILLS BEDBUGS PLUS AEROSOL

- 17.5 oz. Aerosol Permethrin and Pyrethrin spray kills bedbugs, dust mites, ants and roaches.
- Kills eggs and larvae.
- Can be used for a variety of bedbug harborage areas, including mattresses, wall-ceiling joints, baseboards, or behind and underneath furniture, cushions and furnishings.
- Protects up to 12 weeks.



**JT EATON™ KILLS BEDBUGS ULTRA (black label) provides quick knockdown and up to 4 weeks residual protection. Use in steps 2, 4, or 5 for a simplified bedbug program.**

- Can be used for a variety of bedbug harborage areas, including mattresses, wall-ceiling joints, baseboards, or behind and underneath furniture, cushions and furnishings.
- Protects up to 12 weeks.

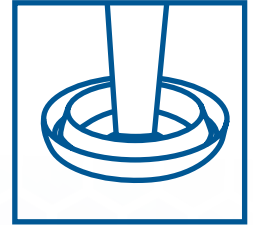


# CLIMBUP<sup>®</sup> INSECT INTERCEPTORS

## Directions for Use

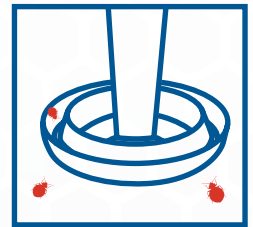
### 1. Installation

- Place ClimbUp<sup>®</sup> devices under each leg of the furniture where people sleep or sit, with each leg placed in the center well of the device.
- Make sure the furniture is not touching any walls. Do not allow objects on furniture to contact the floor or wall, including blankets and electrical cords.



### 2. Once Installed

- Leave the ClimbUp<sup>®</sup> devices in place for a minimum of 21 days for best results.
- Periodically observe the ClimbUp<sup>®</sup> devices for bed bugs.
  - Bed bugs approaching bed from room will be in the outer pitfall ring.
  - Bed bugs climbing down from bed will be found in the center well.
- Remove bed bugs from device by wiping out with cotton ball and immediately place cotton ball in sealed plastic bag for disposal. Or fill device with soapy water and empty any soapy water containing bed bugs into the toilet.
- Periodically observe the ClimbUp<sup>®</sup> devices for dust, debris, or other items present in the wells that may provide a method for the bugs to escape.
  - If present, wipe any foreign substances from the ClimbUp<sup>®</sup> devices.



### 3. Discarding ClimbUp<sup>®</sup> Insect Interceptors

- The ClimbUp<sup>®</sup> devices are made of recyclable plastic and once cleaned can be disposed of in a recycling bin that accepts high density polyethylene (HDPE= #2 recycling symbol). If device is not washed, discard in sealed plastic bag in outdoor receptacle.



## PRECAUTIONARY STATEMENTS

- *ClimbUp<sup>®</sup> insect interceptors are intended to monitor, not control, bed bugs.*
- *ClimbUp<sup>®</sup> insect interceptors may not be able to be used with certain beds or couches.*
- *ClimbUp<sup>®</sup> insect interceptors are manufactured with high mirror finish polypropylene and do not need talcum powder to be slick enough to catch common bed bugs if kept clean.*
- *If humans or pets are not sleeping on bed or couch, bed bugs will not be attracted into device.*
- *Live bugs may be present on, in, or around ClimbUp<sup>®</sup> insect interceptors.*

*The manufacturer of the ClimbUp<sup>®</sup> insect interceptors is not responsible for any injury, disease or illness caused, or allegedly caused by bites, stings, or contamination of bed bugs or any other insects.*

EPA EST. NO. 56-OH-002 • CLIMBUP<sup>®</sup> is a registered trademark of JT EATON<sup>®</sup>