

HOW TO CHOOSE

Consider The Ladder Material

Powder-coated steel ladders are corrosion-resistant and work well in dry areas, with load capacities ranging from 450 to 1000 lbs. They are component-based and replaceable parts.

Aluminum ladders are lightweight, suitable for indoor and outdoor use, but not around electricity. They have a 350 lbs. load capacity.

Hybrid ladders combine aluminum and powder-coated steel for lightweight maneuverability and strength, with a 450 lbs. weight capacity.

Stainless steel ladders are durable and corrosion-resistant, ideal for various environments, including food and marine. They're easy to clean and maintain, with replaceable parts.

Tread Types

Perforated Step Tread: Economical and provides excellent slip resistance. This tread is used extensively in retail and storeroom applications. Available in Steel, Aluminum (Tri-Arc and Hybrid Ladders), and Stainless Steel (Ballymore).

Expanded Metal Step Tread: This aggressive tread is ideal for warehouse or retail applications. This design is self-cleaning, allowing foot debris to fall through the tread. Available in Steel Only (Ballymore)

Serrated Grating Tread: This is the most aggressive tread and is designed for the shop floor or any industrial application where maximum slip resistance is required. Available in Steel, Aluminum (Tri-Arc), and Stainless Steel (Ballymore)

Abrasive Mat Tread: A solid steel step with a Non-Skid Abrasive Mat. Ideal for retail applications. Available in Steel Only

Ribbed Tread: Economical aluminum tread. Available in Aluminum Only.

Specialty and Custom Ladders

We offer specialty solutions to meet your specific requirements. Standard options include deep top steps, all-Directional capability, Employee Only signage, exits on the ladder (front or rear), custom colors (Ballymore only), etc. If these options do not align with your specific needs, please feel free to contact us for further assistance with a custom order.



Choosing the right ladder involves considering various aspects. Different materials offer varying levels of strength and durability.

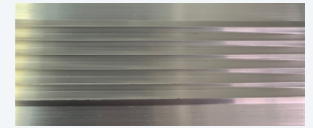
Steel

Aluminum



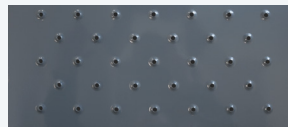
Abrasive Mat Tread

Ballymore: R Tread
Tri-Arc: 3 Tread



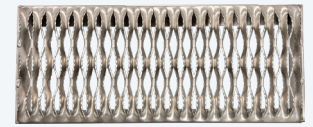
Ribbed Tread

Ballymore: Ribbed Tread
Tri-Arc: 4 Tread



Perforated Tread

Ballymore: P Tread



Serrated Tread

Ballymore: G Tread
Tri-Arc: 5 Tread



Perforated Tread

Tri-Arc: 6 Tread



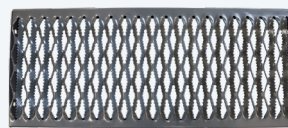
Perforated Tread

Tri-Arc: 6 Tread



Expanded Metal Tread

Ballymore: X Tread



Serrated Tread

Also Known As
Grip Strut
Ballymore: G Tread
Tri-Arc: 2 Tread

A LADDER



Factors, and the material of the ladder is a crucial factor, length, durability, and corrosion resistance.

Size Considerations



Step Width



16"



24"



36"

Size Considerations

Platform Height: Determine both your working and platform height dimensions, so you are able to figure the number of steps you will need. Select platform height based on operations to be performed or weight and bulk of object to be carried. The maximum convenient working height is generally 5 - 6 feet above the top step or platform.

Ceiling Height: Also consider the ceiling height. Minimum ceiling height should be 6 - 7 feet above the top step or platform.

Step Width: This will depend on your surroundings. Is this being used outdoors? In a warehouse? In a manufacturing facility? Standard widths are 16", 24" and 36". In larger ladders, choose a wide ladder over a narrow one if space permits. For very bulky loads, consider a stairway slope ladder and/or deeper top steps.

Aisle Space and Other Obstructions: Ask yourself: Will people pass the ladder in an aisle? Where will it be stored when not in use and is there enough space to accommodate? Always consider limitations on ladder dimensions imposed by doorways, overhead obstructions, corners to be turned, etc.

NOTE: Load capacity (lbs.) is the combined weight of user & materials.

Locking Mechanisms

Lift Assist Lockstep (Patented Ballymore Only): Safest and most durable lock step on the market today. Apply weight to the steps and the ladder automatically drops the front feet to the ground securing the ladder for safe climbing.

Weight Actuated Lockstep (Patented Ballymore Only): This Patented state of the art lock step automatically actuates when weight is applied to the stair section.

Standard Lockstep: Ideal for applications over 5 steps. These ladders are raised into the rolling position when the lift bar is depressed. To release the lock step, step on the release bar in front of the first step.

Spring Loaded Casters: Ideal for shorter ladders 5 steps and below. On this style ladders, the wheel retract under the user's weight securing the ladder to the floor.

Patented Lift Assist Lock Step

*Ballymore Only



Patented Weight Actuated Lock Step

*Ballymore Only



Standard Lock Step



Spring Loaded Casters

