

# Fellowes Array™ Recess AR2



## High Performance, Low Profile



Seamless &  
Scalable Integration



Automatic Sense &  
React Technology with  
EnviroSmart+™



Effective &  
Efficient Filtration



Monitoring & Real-  
Time Data with  
Viewpoint

### Featuring:

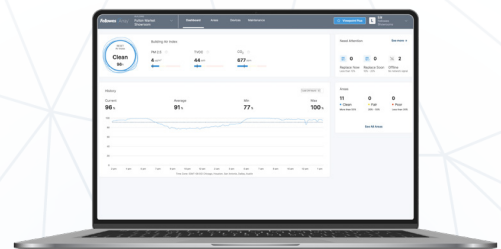
- Fellowes 3-in-1 filter (prefilter, carbon and H13 True HEPA filtration) is 99.95% effective in capturing molecules as small as 0.1 microns including viruses, allergens and germs and is designed to last for one full year. Array™ Recess AR2 includes dual filters
- Array™ Recess units' energy efficient design includes our unique mixed-flow fan, designed to maximize air flow while delivering quiet operation
- Our EnviroSmart+™ Technology includes a full suite of comfort and control sensors to continuously monitor contaminants, room occupancy and noise levels to proactively respond to changes. Our integrated suite of indoor air quality (IAQ) sensors includes particulates (PM10, PM2.5), occupancy, temperature, humidity (RH), carbon dioxide (CO2), pressure, and TVOCs
- Access to the Array™ Viewpoint cloud-based dashboard, designed to give users comprehensive visibility into their building's air quality, is included at no charge. All units connect through building-wide, secure LTE
- Designed and engineered for long term use backed with 5-year warranty

### Maximize your system with:



#### Array™ Lookout

Wall-mounted display shows precise air quality status and filtration progress



#### Array™ Viewpoint Plus

Building managers can access advanced features in the Viewpoint dashboard, available through a subscription plan

## The Full Networked Air Quality System



# Fellowes Array<sup>™</sup> Recess AR2

Code	Dimensions (L x W x H)	Weight (lbs.)	Color
5888901	47.3 x 23.6 x 12.4	76.1	White



Technical Specifications	
Max Air Flow (CFM)	600
Fan Speeds (CFM)	114, 153, 264, 391, 600
Sound Pressure Levels (dB per ISO 3746)	26, 27, 36, 47, 54
Power Requirements	AC120V/60Hz/1.5A
Power Consumption (watts)	9, 12, 23, 45, 120
IoT Connectivity	LTE
Modes	Auto, Quiet, Manual
Filter Change Indicator	Yes
Air Intake	Bottom
Air Outlet	Bottom
Warranty	5-Year Limited

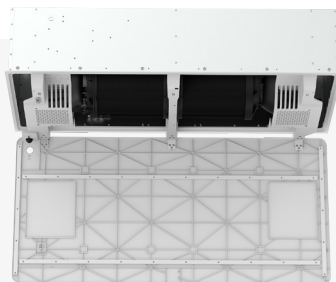
Certifications
CARB*
FCC
UL 507
EN1822M

RESET Air Class B Sensors
PM2.5
PM10
VOC/TVOC
CO2
RH
Temperature

Virus Testing
H1N1
Rhinovirus
SARS-CoV-2*

Monitoring and Comfort Sensors
Pressure
Light
Occupancy
Sound

Area Coverage (SQFT)			
eACH	Ceiling Height (ft)		
	8	10	12
1	4,500	3,600	3,000
3	1,500	1,200	1,000
5	900	720	600



Code: 5890102

AR2 Filter	
Filter Type	3-in-1 360° (Pre-filter, Carbon, and H13 True HEPA)
Filter Rating	H13 True HEPA
Filter Efficiency	99.95% @ 0.1 microns
Antimicrobial Coating	Yes
Estimated Filter Life	12 months
Pack Size	2PK