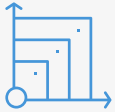


# Fellowes Array™ Wall AW1 & Stand AS1



## Wall and Stand designs are part of Array™, the most advanced networked air quality system



Seamless &  
Scalable Integration



Automatic Sense &  
React Technology with  
EnviroSmart+™



Effective &  
Efficient Filtration



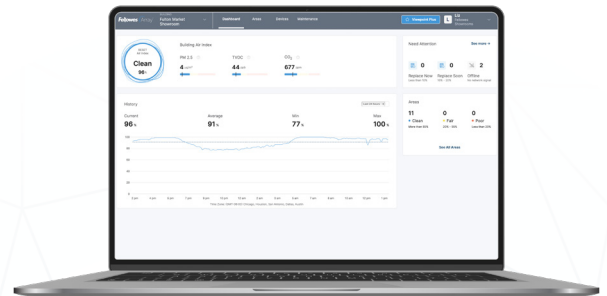
Monitoring & Real-  
Time Data with  
Viewpoint

### Featuring:

- Clean, subtle design includes integrated Lookout display providing Air Quality status to users of an area
- Fellowes 3-stage filtration (pre-filter, carbon, and H13 True HEPA) Effectively removes at least 99.95% of particles as small as 0.1 microns, including allergens, such as pollen, dust, pet dander, and smoke
- Equipped with our EnviroSmart+™ Technology which includes a full suite of comfort and control sensors to continuously monitor contaminants, room occupancy and noise levels to proactively respond to changes. Our integrated suite of indoor air quality (IAQ) sensors includes particulates (PM10, PM2.5), occupancy, temperature, humidity (RH), carbon dioxide (CO2), pressure, and TVOCs
- Access to the Array™ Viewpoint cloud-based dashboard, designed to give users comprehensive visibility into their building's air quality, is included at no charge. All units connect through building-wide, secure LTE
- Designed and engineered for long term use backed with 5-year warranty

\*Based on 98.1% Single Pass Reduction in Staphylococcus epidermidis bacteria and 87.7% Single Pass Reduction in Bacteriophage Phi6 virus which is a surrogate for coronaviruses (including SARS-CoV-2). The term "Kill" is used to represent the inactivation of pathogens from the UV-C light.

### Maximize your system with:



#### Array™ Viewpoint Plus

Building managers can access advanced features in the Viewpoint dashboard, available through a subscription plan

## The Full Networked Air Quality System



# Fellowes Array™ AW1 & AS1



AW1

AS1

Code	Dimensions (L x W x H)	Weight (lbs.)	Color
5884801 (Wall)	20.9 x 9.7 x 19.6	20	White
5884201 (Stand)	20.9 x 10.2 x 22.8	25	

Technical Specifications	
Max Air Flow (CFM)	240
Fan Speeds (CFM)	68, 90, 110, 140, 240
Sound Pressure Levels (dB per ISO 3746)	AS1: 29, 34, 38, 44, 57 AW1: 28, 33, 38, 44, 56
Power Requirements	AC120V/60Hz/0.9A
Power Consumption (watts)	6, 9, 13, 24, 96
IoT Connectivity	LTE
Modes	Auto, Quiet, Manual
Filter Change Indicator	Yes
Air Intake	Bottom, Sides
Air Outlet	Top
Warranty	5-Year Limited

Certifications	RESET Air Class B Sensors
CARB*	PM2.5
FCC	PM10
UL 507	VOC/TVOC
EN1822M	CO2
	RH
	Temperature
Virus Testing	Monitoring and Comfort Sensors
H1N1	Pressure
Rhinovirus	Light
SARS-CoV-2*	Occupancy
	Sound

Area Coverage (SQFT)			
eACH	Ceiling Height (ft)		
	8	10	12
1	1,800	1,440	1,200
3	600	480	400
5	360	288	240



Code: 9436902

AW1 & AS1 Filter	
Filter Type	Hybrid Filter (Carbon, H13 True HEPA)
Filter Rating	H13 True HEPA
Filter Efficiency	99.95% @ 0.1 microns
Antimicrobial Coating	Yes
Estimated Filter Life	12 months
Pack Size	2PK - Includes Pre-Filter