

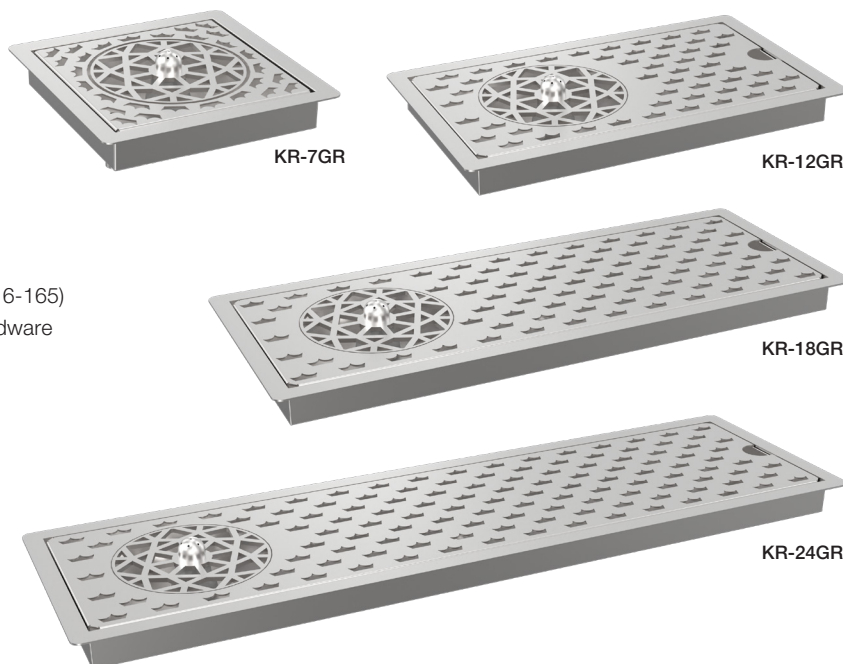
Rinsers

NEW

Drop-In Rinsers

- All stainless steel construction
- High quality push down activation rinser valve
- Removable perforated insert for easy cleaning (KR-7GR does not include perforated insert)
- Built-in 1/2" drain with 10' drain tube
- Includes in-line pressure regulator for speed rinser (16-165)
- Includes 10' drain tube, two elbows & mounting hardware

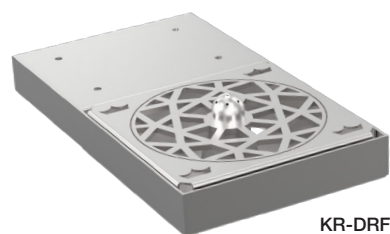
Model	Length	Width	Weight
KR-7GR	7"	7"	7
KR-12GR	12"	7"	10
KR-18GR	18"	7"	13
KR-24GR	24"	7"	16



Undermount Rinser Faucet

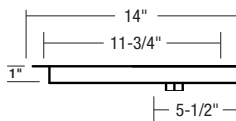
- All stainless steel construction
- High quality push down activation rinser valve
- Mounts under counter tops or bar tops
- Built-in 1/2" drain with 10' drain tube
- Includes in-line pressure regulator for speed rinser (16-165)
- Includes 10' drain tube, two elbows & mounting hardware

Model	Length	Width	Weight
KR-DRF	5"	9"	9



Drop-In Bar Top Drainers

- All stainless steel construction
- 14" front to back depth
- Removable perforated insert for easy cleaning
- 1/2" drain included New Style: (23-126)
Old Style: (23-120)



Model	Length	Depth	Cutout Size	Wgt.
KR-D24	24"	14"	12" x 22"	12
KR-D30	30"	14"	12" x 28"	14
KR-D36	36"	14"	12" x 34"	16

NOTE: Custom sizes available

