

FLEXIBLE DOORS & CURTAINS

clearwaydoor.com



Clearway

Flexible Door and Curtain Products for Area Separation and Temperature Control



3 About Clearway

5 Application Chart

6 PVC Strip Door Products

7 PVC Strip Types

9 PVC Rolls

10 Strip Door/Curtain Kits

13 Hardware/Accessories

14 Flexible Traffic Doors

16 Ecoflex Door

18 Flexible PVC Impact Door

23 Technical Specifications

clearwaydoor.com

Why use flexible traffic doors?

Flexible traffic doors allow people and materials to pass through the door openings of your facility without stopping to open the door, while at the same time, limiting the ability of air to pass through. This helps reduce noise, dust, insects, and other airborne contaminants while maintaining proper temperatures and saving energy.

Innovations for a better planet

By helping to maintain air separation, our products are instrumental in reducing energy usage for our customers. By saving energy, our (mostly recyclable) products help reduce operational costs at the same time they save real money for our customers. It's a win-win financially and for the environment.

contents





ABOUT US

Experienced

We've been making flexible vinyl door and curtain products for more than 50 years. Our team of seasoned professionals prides itself on providing solutions. We understand your application and we'd like to help.

Vertically Integrated

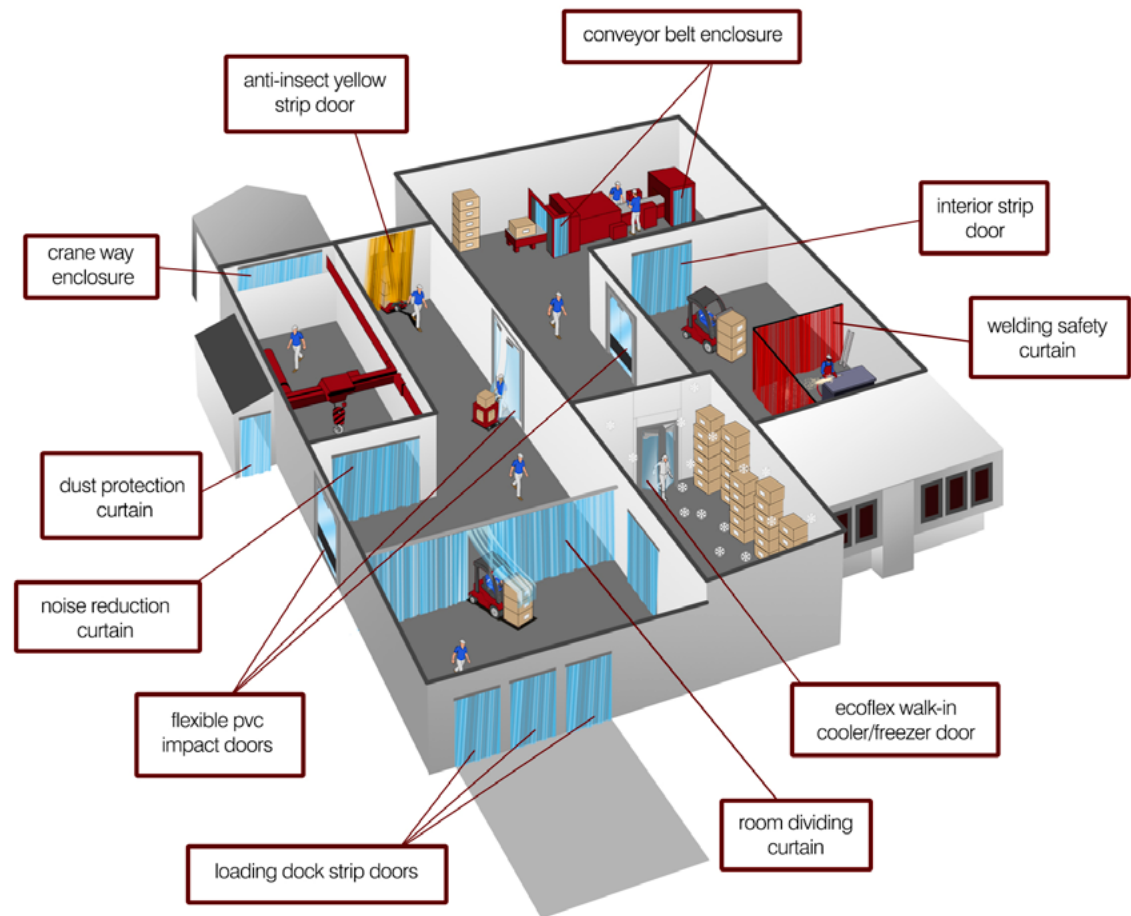
Clearway handles the entire manufacturing process, from compounding to extrusion to fabrication. We control everything from raw material to final product, and stand behind the results.

Committed

Our motivation is our customers. When our customers have a problem it becomes our problem. Once we know it, we fix it. Our team knows that without our customers there is no Clearway and our actions reflect that.

BENEFITS OF FLEXIBLE PVC TRAFFIC DOORS

- ✓ Energy Savings and Temperature Control
- ✓ Employee Comfort and Protection
- ✓ Separation of Work Areas
- ✓ Safety and Visibility
- ✓ Noise, Dust and Pollution Control
- ✓ Prevention of Birds, Insects and Rodents
- ✓ Economical and Practical
- ✓ Toughness, Durability and Resilience
- ✓ Easy Traffic Flow
- ✓ Installation and Maintenance



APPLICATION GUIDE

	STRIP DOOR KITS					FLEXIBLE TRAFFIC DOORS		
INDUSTRIAL / COMMERCIAL	SMOOTH STRIPS	DURARIB STRIPS	STOP-BAC STRIPS	ANTI-INSECT STRIPS	SCREENFLEX STRIPS	ECOFLEX DOOR	IMPACT DOOR 700	IMPACT DOOR 1000
Heavy Forklift (>25 cycles per hour)	S	R	S	R	NR	NR	NR	R
Medium Forklift (10-25 cycles per hour)	S	R	S	R	NR	NR	R	R
Light Forklift (<10 cycles per hour)	S	R	S	R	NR	NR	R	R
Motorized Pallet Jack	R	R	R	R	NR	NR	R	S
Manual Pallet Jack	R	R	R	R	NR	S	R	S
Welding Curtain	NR	NR	NR	NR	R	NR	NR	NR
Cold Storage (above 32° F)	R (1)	R (1)	R	NR	NR	R (1)	R (1)	S (1)
Cold Storage (below 32° F)	R (2)	R (2)	NR	NR	NR	R (2)	R (2)	S (2)
SUPERMARKET / RESTAURANT								
Prep Areas (Cart & Personnel)	R	R	R	S	NR	NR	R	R
Rear Loading Dock	R	R	R	R	NR	NR	S	S
Walk-In Cooler	R (1)	R (1)	R (1)	NR	NR	R (1)	NR	NR
Walk-In Freezer	R (2)	R (2)	NR	NR	NR	R (2)	NR	NR

R – Recommended

S – Secondary

NR – Not Recommended

(1) Standard Temp Material

(2) Low Temp Material

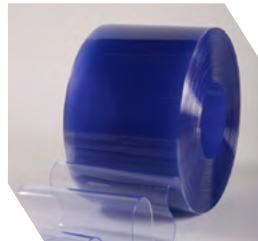
PVC STRIP DOOR PRODUCTS



PVC STRIP TYPES

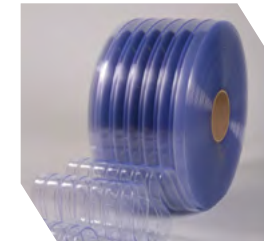
Clearway is proud to offer a wide range of flexible PVC strip and sheet products, which have been tested and certified as compliant with all relevant federal standards.

Standard Smooth



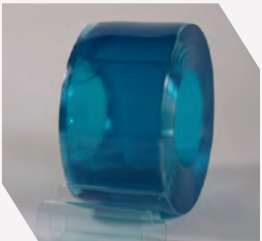
Crystal clear transparent, flexible smooth vinyl for indoor or outdoor applications from -10° to 150°. Versatile and economical material for a wide range of applications. Available in 4", 6", 8", 12", 16" or 48" strip width.

Standard DuraRib™



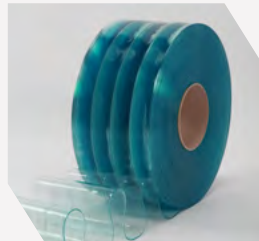
Durable ribbed material reduces scratching from loads passing through the opening. Designed for heavy-duty, high-traffic applications in environment from -10° to 150°. Available in 8", 12", or 16" strip width.

Low Temp Non-Reinforced



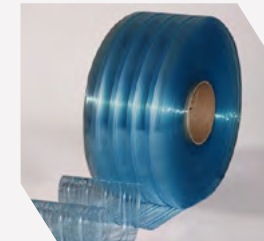
Made with the softest, most flexible, low temp formulation on the market, to prevent strips from cracking in cold temperatures. Designed for freezer applications to -40° F. Available in 4", 6", 8", 12", or 16" strip width.

Low Temp Reinforced



Low Temp vinyl, reinforced with nylon strings embedded in the center of the strip, to prevent elongation or contraction of the flexible PVC. Designed for freezer applications to -40° F. Available in 6", 8", or 12" strip width.

Low Temp DuraRib™



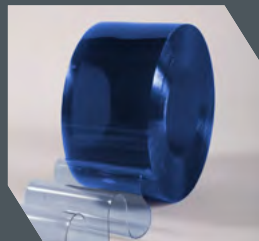
Low temp, ribbed material reduces scratching from loads passing through the opening. Designed for heavy-duty, low temperature applications in environments from -40° to 90°. Available in 8", 12", or 16" strip width.

Stop-Bac™ Anti-Bacterial PVC



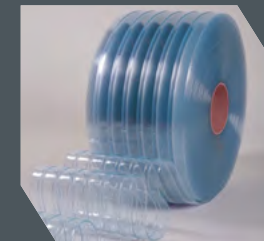
The risk of bacterial infection is ever-present in industrial, food processing and laboratory environments. Clearway's exclusive anti-bacterial agent kills 99.9% of bacteria on the surface of the PVC strip. Designed for food and medical applications where bacterial safety is paramount.

Stop-Bac™ Smooth



Our exclusive anti-bacterial agent kills 99.9% of bacteria on the surface of the PVC strip. Designed for food applications and medical applications. Available in 6", 8", or 12" strip width.

Stop-Bac™ DuraRib™

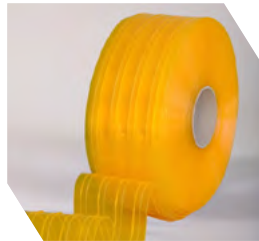


Our DuraRib™ profile and our exclusive anti-bacterial agent which kills 99.9% of bacteria on the surface of the PVC strip. Designed for food and medical applications. Available in 8" strip width.

PVC STRIP TYPES

Clearway is proud to offer a wide range of flexible PVC strip and sheet products, which have been tested and certified as compliant with all relevant federal standards.

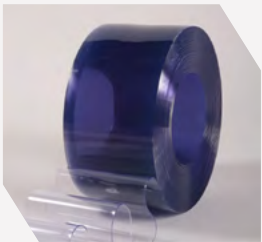
Anti-Insect Yellow DuraRib™



Our exclusive Anti-Insect formulation repels flying insects with its Citronella lemongrass scent and prevents infiltration of the facility. Repels mosquitoes, flies and gnats. The yellow color inhibits insect's ability to detect light behind the curtain, thereby hiding the door opening from pests. FDA and USDA compliant for use in food facilities. Available in 8" or 12" strip width.

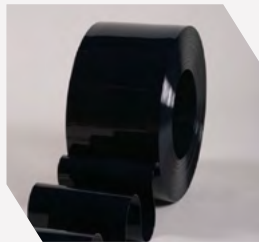


Anti-Static Smooth



Designed for static-sensitive or high-dust applications. Ideal for data centers, server rooms, clean rooms and electronics, manufacturing facilities. To be used in indoor environments. Available in 8" strip width.

Opaque Black



Flexible, opaque black vinyl material used to create a total sight barrier between areas. Ideal for openings in conveyor belt operations to prevent visual access behind the opening. Available in 8" strip width.

Safety Orange



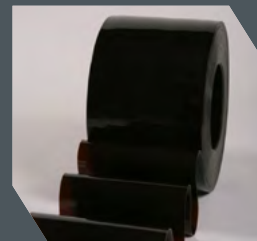
Highlights the outer edges of the opening, alerting employees and improving safety. Recommended for use as outer edge strips for strip doors with motorized traffic. Available in 8" 12", or 16" strip width.

Screenflex Welding PVC Strips

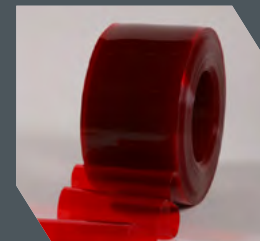


Clearway's exclusive Screenflex PVC strips are designed to protect personnel nearby arc welding processes. All three Screenflex colors meet the AWS F2.3 standard from the American Welding Society and the ISO 25980 (Health and safety in welding and allied processes -- Transparent welding curtains, strips and screens for arc welding processes). Strips have been tested and certified to meet the standard of the California Fire Marshall Title 19.

Screenflex™ Bronze



Screenflex™ Red



Screenflex™ Green

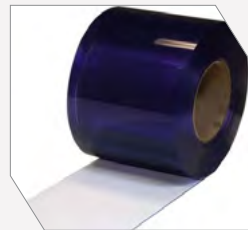


THREE CONVENIENT WAYS TO BUY PVC STRIPS FOR YOUR APPLICATION:



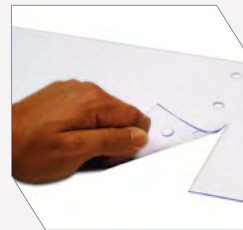
Pre-punched, pre-cut, completely prepared bulk rolls, ready for you to install immediately, without additional fabrication and without any tools

STEP 1



Unroll the
PVC strip

STEP 2



Tear it by hand

STEP 3



Hang the PVC strip
on the QuickMount
or your existing
Hardware

PVC BULK ROLLS



- The most economical way to buy PVC Strip and Sheet materials
- Made from carefully chosen compounds, to meet federal food safety standards
- Ready to be fabricated and installed on any mounting system

REPLACEMENT PVC STRIPS



- Exactly the number of strips you need in the size that fits your application
- Completely customized to fit your door opening
- Pre-punched with holes every 2" on center

PVC STRIP DOOR KITS



PVC STRIP DOOR KITS

Featuring the QuickMount® Strip Door Hardware System and the world's #1 brand of PVC strip products



QUALITY

Made from 100% pure virgin compounds in our facilities, our PVC strips are known worldwide for their clarity, flexibility and stability.

COMPLIANCE

Our PVC strips are designed to meet all relevant federal and international standards and regulations for use in food facilities.

SAFETY

Our PVC strips feature rounded edges for safety and optional bright safety orange side strips.

SELECTION

Clearway's QuickMount® Strip Door Kits are available in all of Clearway's PVC Strip Types, to fit your application perfectly.

SPEED

Our exclusive QuickMount® hardware system makes strip installation ten times faster than with traditional mounting system, and tool-free.

DURABILITY

We are proud to offer a life-time warranty on the QuickMount® Hardware.



- For use in pedestrian applications less than 12' in height
- Made from tough, durable polymer compounds, designed for cold environments
- Engineered from FDA and USDA compliant materials and ideal for food service applications
- Features a lifetime warranty against cracking and breaking



- For use in motorized traffic applications or door openings 12' or taller
- Made from heavy-duty structural aluminum to stand up to any high traffic application
- Featuring modular inter-locking tabs for perfect alignment and easy one-person installation
- Features a lifetime warranty against cracking or breaking

COOLER/FREEZER CURTAIN RETAIL DISPLAY PACK

Boost strip curtain sales with our exclusive display system

Increase turns while maximizing profits

High return on investment

PRODUCT FEATURES

- Fast easy installation featuring Clearway's exclusive QuickMount® strip mounting system
- Fits Standard Walk-In Coolers and Freezers
- Customizable Kit based on your preference
- Cooler strips and Freezer strips available
- Available with 4 or 8 Curtains Included



QUICKMOUNT® REFRIGERATED TRUCK STRIP DOORS

Designed for use on the rear opening of a refrigerated truck trailer, to keep cold air from escaping during loading and unloading. Clearway's QuickMount® Refrigerated Truck Strip Doors help to reduce energy costs, protect merchandise, and meet all relevant federal and international standards and regulations for use in food transport operations.

PRODUCT FEATURES

- Featuring heavy-duty structural aluminum hardware for years of solid service
- Employs QuickMount® HD hardware for fast, easy, secure installation
- Available with Standard Smooth, Low Temperature or DuraRib™ PVC Strips
- Optional Safety Orange PVC strips highlight the edges of the trailer opening
- Models also available for side pedestrian door opening



THREE OPTIONS FOR REPLACEMENT MOUNTING HARDWARE



Specifications

Traffic Types: Pedestrian, Pushcart, Pallet Jack
 Max Door Height: 12'
 PVC Strip Sizes: 4", 6", 8", 12"
 PVC Strip Types: All
 Material: FDA/USDA/NSF compliant polymer
 Hardware Warranty: Lifetime



Specifications

Traffic Types: Forklift, Pallet Jack, Pedestrian
 Max Door Height: 15'
 PVC Strip Sizes: 4", 6", 8", 12"
 PVC Strip Types: All
 Material: Heavy-duty aluminum
 Hardware Warranty: Lifetime

BOLT-ON

UNIVERSAL GALVANIZED



Specifications

Traffic Types: Forklift, Pallet Jack, Pedestrian
 Max Door Height: 24'
 PVC Strip Sizes: 4", 6", 8", 12", 16"
 PVC Strip Types: All
 Material: Galvanized Steel
 Hardware Warranty: Lifetime

SPECIALITY HARDWARE OPTIONS

OHD STANDOFF BRACKET



PRODUCT FEATURES

- Used to mount strip doors, offset from the wall to accommodate overhead sectional door rails
- Galvanized heavy-duty brackets mount to wall
- Galvanized crossbeam between the brackets support the weight of the strip door
- Available in door widths between 6' and 20' width

SLIDING DOOR HARDWARE



PRODUCT FEATURES

- Galvanized track and trolley system
- Used to slide strip door temporarily out of the way
- Bi-parting configurations available
- PVC Strip Sizes: 4", 6", 8", 12", 16"
- PVC Strip Types: All

FLEXIBLE PVC TRAFFIC DOORS



FLEXIBLE DURABLE PRACTICAL



Safety First

Your employees work hard, moving products throughout your facility. Their safety comes first. Clearway's flexible traffic doors provide maximum clarity so they can see any traffic coming through the doorway and avoid accidents and injuries.

Flexibility = Durability

Clearway's flexible door panels help to dissipate the impact with the door by the oncoming loads, leading to a long-time durable performance. Other door systems take the full brunt of the force onto the hinge itself, causing tension and eventual damage.

Lower Lifetime Cost

Other door systems require you to replace the entire door, hinges and all, when damage occurs. With Clearway's flexible traffic doors, it is possible to replace the panels when they become worn, while leaving the hinge system in place.



ECOFLEX™

WALK-IN COOLER/FREEZER DOOR

The Ecoflex Walk-In Cooler/Freezer Door provides an alternative to strip curtains in Walk-In Coolers and Freezers. Instead of strips, the Ecoflex uses a pair of bi-parting, overlapping clear PVC panels to keep cold air in, and allow staff members to quickly and easily pass through the door.

PRODUCT FEATURES

- Crystal clear PVC panels for coolers or freezers
- Stainless steel spring-loaded hinge system
- Closes automatically
- Adjustable closing tension
- Universal: Can be wall-mounted or jamb-mounted
- Replacement panels easy to install and inexpensive
- Tight seal for energy savings
- Choice of Standard, Low Temp or Stop-Bac (anti-bacterial) panels

Clearway's Ecoflex Walk-In Cooler/Freezer Door opens easily and then quickly closes, helping to save energy and maintain proper food storage temperatures. The adjustable tension spring allows you to set the amount of force needed to close the door. The brush polished stainless steel hinges will not rust or corrode. Three types of crystal clear panels are available: Standard (for coolers), Low temp (for freezers), and Stop-Bac (antibacterial). The door kit includes mounting hardware, ready to install quickly and easily in moments with basic hand-tools.



ECOFLEX BENEFITS

- Easy to open with minimal pressure (less than 1lb)
- Easy to pass through doors while hands are full
- Extends the life of compressor in walk-in cooler/freezer
- Crystal clear panels allow for maximum visibility
- Made with vinyl compounds compliant with USDA/FDA standards
- PVC panels swing out of the way and don't drag over merchandise/personnel
- Clean, attractive, stainless steel design
- Easy to clean panels encourage hygienic use
- Better temperature control to keep food safe and fresh
- Fast, easy installation with stainless self-tapping screws

INSTALLATION IN 3 EASY STEPS

- Mount stainless steel spring loaded Hinge to jamb or wall
- Attach stainless steel plates to flexible PVC panels and hinge
- Adjust spring to desired closing tension



THREE TYPES OF FLEXIBLE PVC PANELS

Ecoflex is available with three types of flexible PVC panels, which have been tested and certified as compliant with all relevant federal food safety standards

Standard Clear



Low Temp Clear



Stop-Bac™



Temp. Range

20°F to 150°F

Thickness

.080" or .120"

Features

Crystal clear versatile and economical

-40°F to 90°F

.080"

Added flexibility for freezer applications

20°F to 150°F

.080"

Kills 99.9% of bacteria on surface of panel

APPLICATIONS

- Supermarkets
- Convenience Stores
- Restaurants
- Refrigeration

TRAFFIC TYPES

- Pedestrian
- Light Carts

PANEL TYPES

- Standard Clear
- Low Temp Clear
- Stop-Bac™

MAX/MIN OPEN. WIDTH

- Max Width 39"
- Min Width 30"

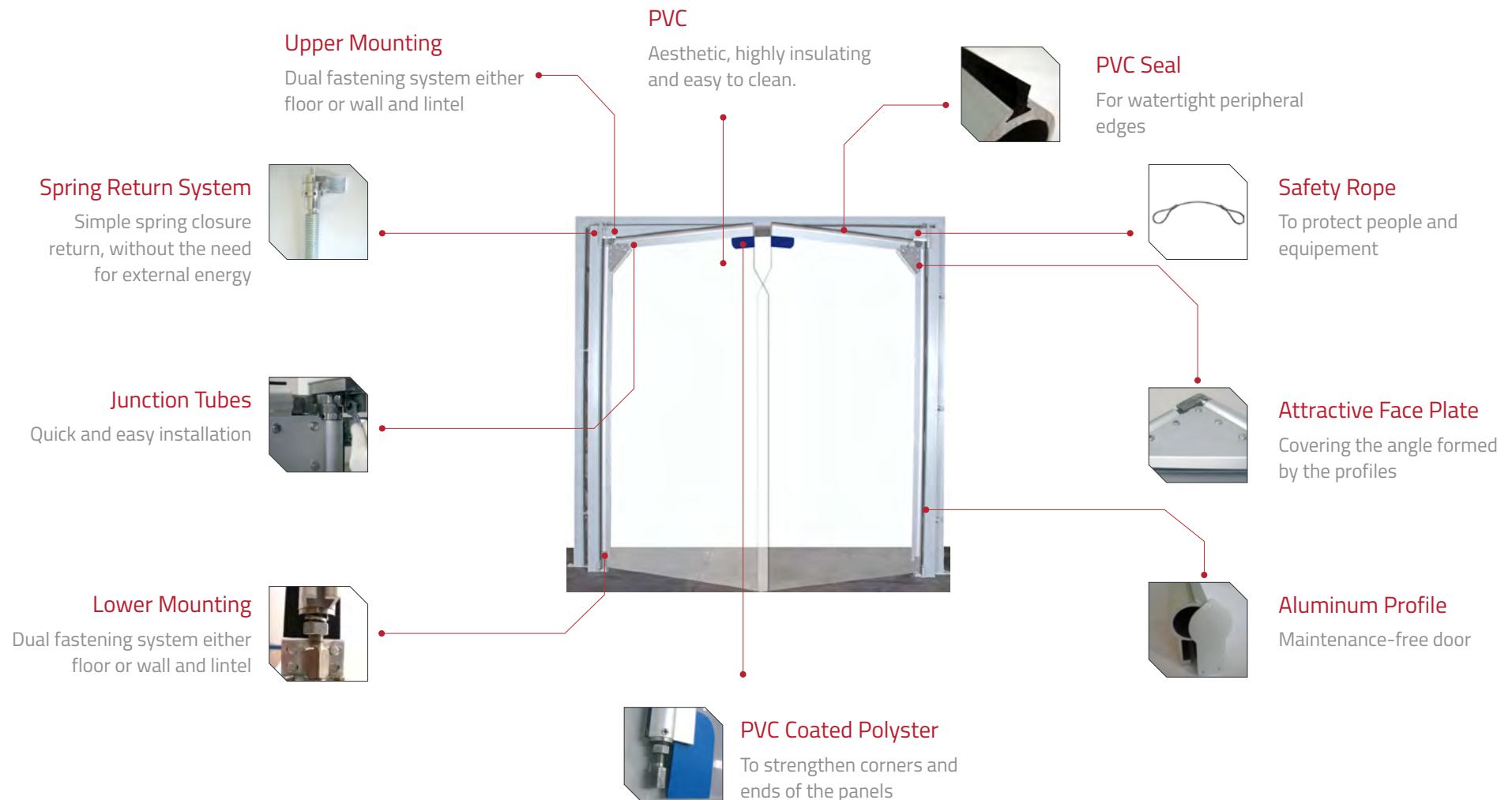
ENERGY LOSS INDEX

- 7.20 Kilowatt Hours/hour

FLEXIBLE PVC

IMPACT DOOR

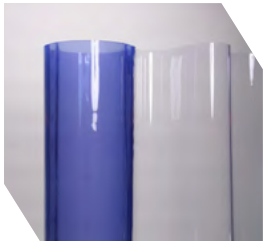
THE DURABLE FLEXIBLE DOOR FOR YOUR APPLICATION



PVC PANEL TYPES

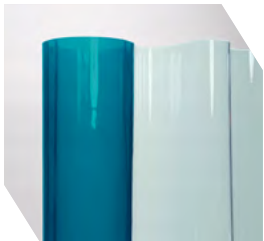
From compounding to extrusion to fabrication, Clearway's flexible PVC panels are manufactured to our exacting specifications. These products have been tested and certified to meet all relevant federal and international standards and regulations. Individual panels available in any width up to 66", in thicknesses from .256" to .354".

Standard Clear



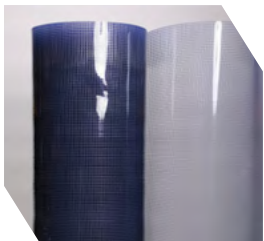
Our most versatile and economical materials designed for maximum visibility. Our crystal clear PVC formulation is compliant with all relevant federal and international food safety standards. Formulated for applications in ambient temperatures or refrigerated environments down to zero degrees F. Panels are available in .275" or .354" thicknesses.

Low Temp Clear



Formulated for superior flexibility in low temperature applications, our low temp clear PVC panels are the perfect solution for cold storage or food manufacturing applications down to -25 degrees. This PVC formulation is compliant with all relevant federal and international food safety standards. Panels are available in .275" or .354" thicknesses.

Standard Reinforced



Heavy-duty applications sometimes require additional reinforcement. Our exclusive co-extrusion process embeds a reinforced scrim inside the PVC sheet for maximum durability. Our crystal clear formulation is compliant with all relevant federal and international food safety standards and is designed for environments down to zero degrees F. Panels are available in .256" thickness.

FLEXIBLE PVC IMPACT DOOR

PVC SHEET TYPE				
Property	Standards/ Norms	Standard Clear	Low Temp Clear	Standard Reinforced
Shore A hardness	EN ISO 868	80	65	80
Tearing resistance	DIN 53515	50	28	50
Tensile strength at break	ASTM D 638 EN ISO 527	16	12	16
Elongation at break		340	390	340
Residual Elongation (a.break)		68	76	68
Thermal conductivity	ASTM C 177	0.16	0.16	.16
Cold bend brittle temperature	ISO 8570	-31	-40	-31
Usage temperature range	EN 1876	5/122	-13/86	5/122
Vicat softening temperature	EN ISO 306	122	188	122
Specific heat capacity	ISO 11357	1.6	1.6	1.6
Sound reduction	DIN 52210	>35	>35	<35
Light transmittance	ASTM D 1003	85	85	85
UV/IR filter	AWS F2.M:2011	-	-	-
UV resistance	ISO4892	Yes	Yes	Yes
Charge buildup	IEC 61087	Yes	Yes	Yes
Surface resistivity	IEC 60093	40	40	40
Water absorption	EN ISO 62	-0.2	-0.2	-0.2
Density	ASTM D 792	1.22	1.18	1.22

HARDWARE SPECIFICATIONS AND OPTIONS

FLEXIBLE PVC
IMPACT DOOR

Galvanized Fixture Plates



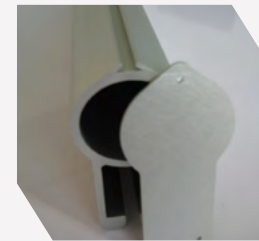
Our simple installation process begins by affixing our hot-dip galvanized fixture plates to the jamb (top hinge location) and the floor (bottom hinge location). These indestructible steel plates bolt on securely and provide the firm foundation for a stable, trouble-free installation. Clearway's innovative hardware system allows more than 85% of the door's weight to rest directly on the floor.

Self-Closing Torsion Spring



Clearway's self-closing torsion spring can be adjusted to compensate for wind resistance or negative air pressure situations, providing a tight seal in even the most challenging applications. Using the adjustment tool provided with your door, calibration of the spring takes just a few moments with our written directions. The result is a tight closure that efficiently prevents air movement and energy loss while no traffic is passing through.

Anodized Aluminum Arms



Clearway's Flexible PVC Impact Doors feature anodized aluminum arm profiles that securely hold the PVC panel in place, along the jamb and across the top of each panel. This lightweight, yet resilient hardware allows for easy PVC panel replacement after years of use and thousands of cycles. Rust-free and durable, this system allows the door to dissipate the force of impact by permitting two edges of the panel to move freely.

INSTALLATION IN 4 EASY STEPS

STEP 1



Install Fixture Plates to Floor and Jamb

STEP 2



Attach Top and Bottom Hinges

STEP 3



Calibrate Tension of Self-Closing Spring

STEP 4



Final Adjustment of Door Alignment

700 SERIES

FLEXIBLE PVC IMPACT DOOR

The 700 Series of Clearway Flexible PVC Impact Doors is a versatile line of medium to heavy duty traffic doors. Clearway's crystal clear .275" or .254" thick PVC panels are formulated to meet all relevant federal and international food safety standards and are available for standard and low temperature environments.



FEATURES AND BENEFITS

- Clear, Flexible .275" or .254" PVC Material
- Smooth, Easy Swing Action
- Adjustable Torsion
- Maximum Visibility and Safety
- Easy Installation and Panel Replacement
- Low Maintenance



SR700 Impact Door

Designed for Medium to Heavy Duty Applications

The 700 Series of Flexible PVC Impact Doors are Clearway's most versatile PVC swing doors. They can be used with push-carts, pallet-jacks or motorized traffic. These resilient and durable doors offer flexibility to absorb a portion of the impact. Optional Impact Plates are also available to absorb impact from loads passing through the opening.

Three Panel Types to Choose From

Clearway's 700 Series Flexible PVC Impact doors are available in Standard Clear (for ambient temperature or refrigeration applications) or Low Temp Clear (for freezer applications). Also available is Clearway's exclusive Standard Reinforced PVC panels with a reinforced scrim embedded into the PVC for maximum resiliency.

APPLICATIONS

- Retailers
- Cold Storage
- Food Processing
- Industrial
- Warehouse

TRAFFIC TYPES

- Push Carts
- Pallet Jacks
- Forklifts

PANEL OPTIONS

- Standard Clear
- Low Temp Clear
- Standard Reinforced

MAX/MIN OPENING SIZE

- Max Width 120" x 120"
- Min Width 30" x 60"

ENERGY LOSS INDEX

- 4.11 Kilowatt Hours/hour

Model	Panel Type	Panel Thickness	Max/Min Width	Max/Min Height	Max/Min Temp
SC700	Standard Clear	.275"	120"/30"	120"/60"	120°F/5°F
LT700	Low Temp Clear	.275"	120"/30"	120"/60"	86°F/-13°F
SR700	Standard Reinforced	.254"	120"/30"	120"/60"	120°F/5°F

APPLICATIONS

- Industrial
- Food Processing
- Cold Storage
- Warehouse
- Distribution

TRAFFIC TYPES

- Push Carts
- Pallet Jacks
- Forklifts

PANEL OPTIONS

- Standard Clear
- Low Temp Clear

MAX/MIN OPENING SIZE

- Max Width 120" x 120"
- Min Width 30" x 60"

ENERGY LOSS INDEX

- 3.01 Kilowatt Hours/hour

1000 SERIES

FLEXIBLE PVC
IMPACT DOOR

The 1000 Series of Clearway Flexible PVC Impact Doors is the ideal solution for heavy-duty high-traffic applications for maximum insulation. Clearway's clear .354" thick PVC panels are formulated to meet all relevant federal and international food safety standards and are available for standard and low temperature environments.



FEATURES AND BENEFITS

- Heavy Duty, Clear .354" PVC Material
- Tough, Durable Construction
- Adjustable Torsion Spring Hinge
- Maximum Visibility and Safety
- Easy Installation and Panel Replacement
- Replaceable Top and Jamb Wipers
- Low Maintenance



Our Toughest Door for Your Toughest Applications

The 1000 Series of Flexible PVC Impact Doors is Clearway's toughest door, made from the heaviest gauge PVC panels for your heavy-duty application. The combination of strength and flexibility make the 1000 Series the door of choice high-traffic situations. Unlike rigid doors that can fracture with repeated impact, this door absorbs the punishment by flexing on impact.

Standard Clear or Low Temp Clear Panels

Clearway's 1000 Series Flexible PVC Impact doors are available in Standard Clear (for ambient temperature or refrigeration applications) or Low Temp Clear (for freezer applications). Simply choose which model best fits the application and specify it at the time of order. Clearway's Low Temp PVC panels are made for maximum flexibility in applications between 0° and -20° F.

Model	Panel Type	Panel Thickness	Max/Min Width	Max/Min Height	Max/Min Temp
SC1000	Standard Clear	.354"	120"/36"	120"/72"	120°F/5°F
LT1000	Low Temp Clear	.354"	120"/36"	120"/72"	86°F/-13°F

TECHNICAL SPECIFICATIONS OF FLEXIBLE PVC PRODUCTS

PHYSICAL PROPERTIES OF FLEXIBLE PVC PRODUCTS

Property	Standard	Unit	Standard	Low Temp	Anti-Stat	Colored	Screenflex
Shore A hardness	EN ISO 868	Sh A	80	72	80	80	80
Tearing resistance	DIN 53515	N/mm	50	28	50	50	55
Tensile strength at break	ASTM D 638 EN ISO 527	N/mm ²	16	12	16	16	18
Elongation at break		%	340	390	340	340	300
Residual Elongation (a.break)		%	68	76	68	68	62
Thermal conductivity	ASTM C 177	W/m.K	0.16	0.16	0.16	0.16	0.16
Cold bend brittle temperature	ASTM D 746	°F	-31	-56	-31	-31	-31
Usage temperature range	EN 1876	°F	-10/150	-40/90	-10/150	-10/150	-10/150
Vicat softening temperature	EN ISO 306	°F	122	188	122	122	122
Specific heat capacity	ISO 11357	kJ/kg.K	1.6	1.6	1.6	1.6	1.6
Sound reduction	DIN 52210	db	>35	>35	>35	>35	<35
Reaction to fire	CSFM title 19:1237 AWS F2.3 M:2011	Compliant	-	-	-	-	Compliant
Light transmittance	ASTM D 1003	%	85	85	85	0 To 80	<13
UV/IR filter	AWS F2.M:2011	Compliant	-	-	-	-	Compliant
UV resistance	ISO4892	-	Yes	Yes	Yes	Yes	High
Charge buildup	IEC 61087	Sparks	Yes	Yes	No	No	Yes
Surface resistivity	IEC 60093	.10 ¹²	40	40	2	2	40
Water absorption	EN ISO 62	%	-0.2	-0.2	1 To 1.6	1 To 1.6	-0.2
Density	ASTM D 792	g/cm ³	1.22	1.18	1.22	1.22	1.22

LIGHT TRANSMITTANCE DATA

Standard	Screenflex Red	Screenflex Green	Screenflex Bronze
200 - 315 Nm	<0.002	<0.002	<0.002
315 - 380 Nm	<0.01	<0.01	<0.01
400 - 500 Nm	0.0	0.1	0.2
Luminous Trans.	21.8	0.17	4.24
AWS F2.3 2011	PASS	PASS	PASS
ISO 25980	PASS	PASS	PASS

SOUND TRANSMISSION DATA

FREQ. (HERTZ)	TRANS. LOSS(dB)	FREQ. (HERTZ)	TRANS. LOSS(dB)
100	6	800	11
125	8	1000	1250
160	7	1250	14
200	8	1600	14
250	9	2000	15
315	10	2500	16
400	10	3150	16
500	10	4000	17
600	11	5000	17

Ratings given for .240" thickness flexible PVC (.120" with full overlap).
Thickness of material will influence actual results in the application.

AVAILABLE FLEXIBLE PVC STRIP AND SHEET PRODUCTS

Standard Smooth 4" x .060"	Standard Clear 48" x .060"	Low Temp Non-Reinforced 4" x .060"	Low Temp Reinforced 6" x .060"	Standard DuraRib™ 8" x .072"	Screenflex™ Bronze 8" x .080"
Standard Smooth 6" x .060"	Standard Clear 48" x .080"	Low Temp Non-Reinforced 6" x .060"	Low Temp Reinforced 8" x .080"	Standard DuraRib™ 12" x .110"	Screenflex™ Bronze 12" x .080"
Standard Smooth 8" x .080"	Standard Clear 48" x .120"	Low Temp Non-Reinforced 8" x .080"	Low Temp Reinforced 12" x .120"	Standard DuraRib™ 16" x .144"	Screenflex™ Bronze 48" x .080"
Standard Smooth 8" x .120"	Standard Clear 48" x .160"	Low Temp Non-Reinforced 12" x .120"	Stop-Bac™ Smooth 6" x .060"	Low Temp DuraRib™ 8" x .072"	Screenflex™ Red 8" x .080"
Standard Smooth 12" x .080"	Safety Orange 8" x .080"	Low Temp Non-Reinforced 16" x .160"	Stop-Bac™ Smooth 8" x .080"	Low Temp DuraRib™ 12" x .110"	Screenflex™ Red 12" x .080"
Standard Smooth 12" x .120"	Safety Orange 12" x .120"	Anti-Insect Yellow DuraRib™ 8" x .072"	Stop-Bac™ Smooth 12" x .120"	Low Temp DuraRib™ 16" x .144"	Screenflex™ Green 8" x .080"
Standard Smooth 16" x .160"	Safety Orange 16" x .160"	Anti-Insect Yellow DuraRib™ 12" x .110"	Stop-Bac™ DuraRib™ 8" x .072"	Anti-Static Smooth 8" x .080"	Opaque Black 8" x .080"



Toll Free Phone: 800.504.1716
International: 205.588.1635
Website: www.clearwaydoor.com
Toll Free Fax: 888.501.1096

Address:
Clearway
169 Business Center Dr
Birmingham, AL 35244
USA

Compliant with Food and Safety Standards

