

CUSHION-GRIP™ SCREWDRIVERS



Screw-Holding Screwdrivers

- Starts and drives screws with one hand when working in hard-to-reach spaces



Cat. No.	Tip Type	Shank Type	Shank Length	Overall Length
32215	1/4" (6.4 mm) Cabinet	Round	7" (17.8 cm)	11.25" (28.6 cm)
32216	#2 Phillips	Round	7" (17.8 cm)	11.25" (28.6 cm)

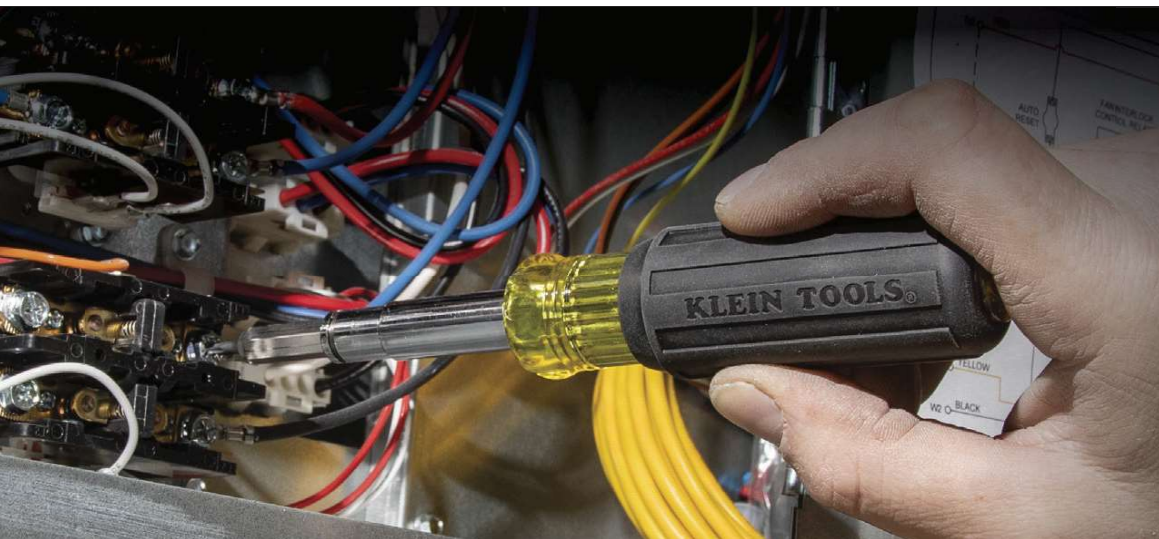
Terminal Block Screwdriver

Includes core Cushion-Grip™ Screwdriver features plus:

- Provides exact fit for terminal block screws
- Tip is up to 19% stronger than competitors and provides 76% higher torque value than the required ASME B107 Standard

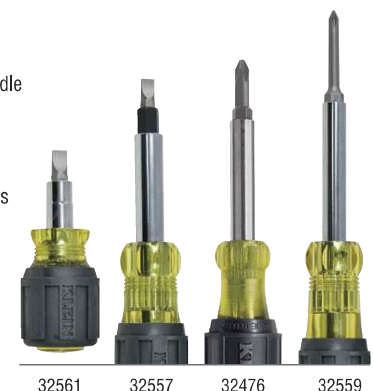


Cat. No.	Tip Type	Shank Type	Shank Length	Overall Length
612-4	1/8" (3.2 mm) Cabinet	Round	4" (10.2 cm)	7.75" (19.7 cm)



Multi-Bit Screwdriver/Nut Drivers

- Integrated screwdriver/nut driver shaft holds popular tips and converts nut driver sizes, with comfortable Cushion-Grip™ handle
- Cat. No. 32500MAG features strong, Rare-Earth magnets to securely hold bits and fasteners
- Cat. No. 32527 includes unique style bit for installation/removal of common TR-4 Schrader® valves and aggressive thread extractor tip for backing out broken cores which is great for HVAC and other industrial applications
- Cat. Nos. 32561 and 32562 compact design features standard 1-1/4" (3.2 cm) shaft allowing easy access to tight work spaces
- Cat. No. 32559 and 32560 have extended shafts and blades to provide 39% longer reach



Cat. No.	Description	Nut Driver Sizes	Phillips Bits	Slotted Bits	Square Bits	Hex Bits	TORX® Bits	Other Bits	Shank Length	Overall Length
32500	11-in-1	3/8", 5/16", 1/4"	#1, #2	1/4" (6.4 mm), 3/16" (4.8 mm)	#1, #2	—	T10, T15	—	3" (7.6 cm)	7.25" (18.4 cm)
32500MAG	11-in-1 Magnetic	3/8", 5/16", 1/4"	#1, #2	1/4" (6.4 mm), 3/16" (4.8 mm)	#1, #2	—	T10, T15	—	3" (7.6 cm)	7.8" (19.8 cm)
★ 32500HD	11-in-1 Impact Rated Driver	1/2", 3/8", 5/16", 1/4"	#1, #2	1/4" (6.4 mm), 3/16" (4.8 mm)	#1, #2	—	T25	—	3.63" (9.2 cm)	8" (20.3 cm)
32527	11-in-1 w/Schrader®	3/8", 5/16", 1/4"	#1, #2	1/4" (6.4 mm), 3/16" (4.8 mm)	#1, #2	—	—	Schrader® Valve Insertion, Core Removal	3" (7.6 cm)	7.75" (19.7 cm)
32476	5-in-1	5/16"	#1, #2	1/4" (6.4 mm), 3/16" (4.8 mm)	—	—	—	—	4" (10.2 cm)	7.75" (19.7 cm)
32477	10-in-1	5/16", 1/4"	#1, #2	1/4" (6.4 mm), 3/16" (4.8 mm)	#1, #2	—	T10, T15	—	4" (10.2 cm)	7.75" (19.7 cm)
32557	10-in-1 Heavy Duty	1/4", 5/16", 3/8"	#1, #2	1/4" (6.4 mm), 3/16" (4.8 mm)	#1, #2	3/8"	—	—	2.953" (7.5 cm)	7.891" (20 cm)
32559	6-in-1 Extended Reach	1/4", 5/16"	#1, #2	1/4" (6.4 mm), 3/16" (4.8 mm)	—	—	—	—	4.109" (10.4 cm)	9.109" (23.1 cm)
32560	6-in-1 Extended Reach	1/4", 5/16"	#2	1/4" (6.4 mm)	#1, #2	—	—	—	4.109" (10.4 cm)	10" (25.4 cm)
32561	6-in-1 Stubby	1/4", 5/16"	#1, #2	1/4" (6.4 mm), 3/16" (4.8 mm)	—	—	—	—	1.266" (3.2 cm)	3.25" (8.3 cm)
32562	6-in-1 Stubby	1/4", 5/16"	#2	3/16" (4.8 mm)	#1, #2	—	—	—	1.266" (3.2 cm)	3.406" (8.7 cm)

TORX® is a registered trademark of Acument Intellectual Properties, LLC. Schrader® is a registered trademark of Schrader International, Inc.



Additional bits and replacement bits can be found on page 60

www.kleintools.com > 800-553-4676