

## NEXUS *table system*

Bon Chef is proud to introduce the all new Nexus Table System. This groundbreaking furniture system is completely customizable. The frames are constructed of lightweight aluminum alloy and are entirely collapsible, allowing for unmatched ease of transport. A completely hidden wiring system and integrated electrical outlets allows for a clean, beautiful look - no messy, tangled wires! Choose your colors and finishes, then build out your tabletop with functional, drop-in tiles.





**MOBILE, COLLAPSIBLE FRAME**  
Frames collapse for easy transport



**LIGHTWEIGHT ALUMINUM ALLOY FRAME**  
One third the weight of stainless steel



**INTEGRATED ELECTRICAL OUTLETS**  
Customer can utilize their own equipment



**MODULAR, DROP-IN COMPONENTS**  
Easily swap a variety of equipment in and out



**RETRACTABLE POWER CORDS**  
Tangle-free systems help maintain a clean space



**HIDDEN WIRING SYSTEM**  
Hide all extra extension cords

MODERN.  
MOBILE.  
MODULAR.







1. FRAME FOLDS FLAT



2. FRAME POPS OPEN



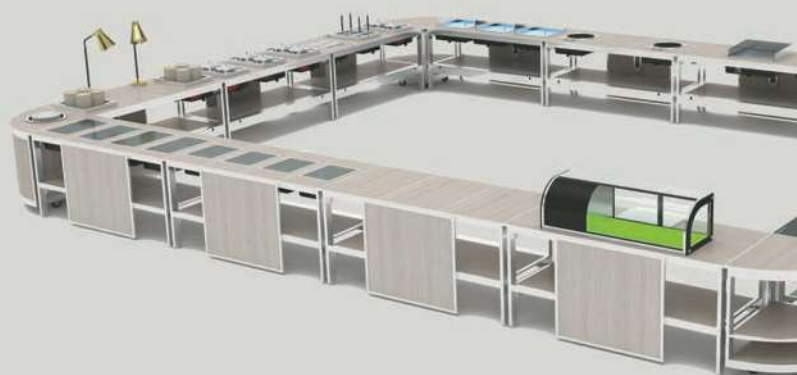
3. ADD MODULAR SHELF



4. ADD MODULAR PANEL



4. ADD SURFACE COMPONENTS



5. BUILD OUT YOUR SYSTEM



### *customize your look*

Choose from multiple finishes to match your current decor: Silver & Oak or Black & Concrete.



### *endless combinations*

Choose from a variety of drop-in, functional tabletop tiles to create a wide range of setups for different events.



### *transport carts*

We offer a selection of transport carts to ensure the components of the Nexus system can be easily stored and moved to a variety of locations.



### *special order colors and finishes available*

Bronze and Gold frames available by special order, as well as multiple laminate finish options.



COLLAPSIBLE DISPLAY FRAME

69.25" x 30" x 32.75"

**NX-1-S**

Silver Anodized Frame  
with Oak Laminate

**NX-1-B**

Black Anodized Frame  
with Concrete Laminate



COUNTERTOP - FULL SIZE

70.75" x 31.5" x 1"

**NX-1-CT-S-O**

Silver Anodized Frame  
with Oak Laminate

**NX-1-CT-B-C**

Black Anodized Frame  
with Concrete Laminate



COUNTERTOP - HALF SIZE

35.5" x 31.5" x 1"

**NX-12-CT-S-O**

Silver Anodized Frame  
with Oak Laminate

**NX-12-CT-B-C**

Black Anodized Frame  
with Concrete Laminate



COUNTERTOP - QUARTER SIZE

17.75" x 31.5" x 1"

**NX-14-CT-S-O**

Silver Anodized Frame  
with Oak Laminate

**NX-14-CT-B-C**

Black Anodized Frame  
with Concrete Laminate



### FRONT PANEL - FULL SIZE

70.75" x 1" x 31.5"

#### **NX-1-FP-S-O**

Silver Anodized Frame  
with Oak Laminate



#### **NX-1-FP-B-C**

Black Anodized Frame  
with Concrete Laminate



### FRONT PANEL - HALF SIZE

35.5" x 1" x 31.5"

#### **NX-12-FP-S-O**

Silver Anodized Frame  
with Oak Laminate



#### **NX-1-FP-B-C**

Black Anodized Frame  
with Concrete Laminate



### FRONT PANEL - QUARTER SIZE

17.75" x 31.5" x 1"

#### **NX-14-FP-S-O**

Silver Anodized Frame  
with Oak Laminate



#### **NX-14-FP-B-C**

Black Anodized Frame  
with Concrete Laminate



### SIDE PANEL

30" x 1" x 31.5"

#### **NX-1-SP-S-O**

Silver Anodized Frame  
with Oak Laminate



#### **NX-1-SP-B-C**

Black Anodized Frame  
with Concrete Laminate





**BOTTOM SHELF PANEL**

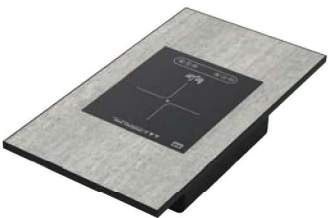
69.25" x 370.75" x 31.5" x 1"

**NX-1-BS-S-O**

Silver Anodized Frame  
with Oak Laminate

**NX-1-BS-B-C**

Black Anodized Frame  
with Concrete Laminate



**INDUCTION TOP -  
QUARTER SIZE**

17.75" x 31.5" x 7"  
1800W, 120V

**NX-14-IC-S-O**

Silver Anodized Frame  
with Oak Laminate

**NX-14-IC-B-C**

Black Anodized Frame  
with Concrete Laminate



**DOUBLE INDUCTION TOP -  
QUARTER SIZE**

17.75" x 31.5" x 7"  
1800W, 120V

**NX-14-DI-S**

Silver Aluminum Edge

**NX-14-DI-B**

Black Aluminum Edge



**RADIANT HEAT TOP -  
QUARTER SIZE**

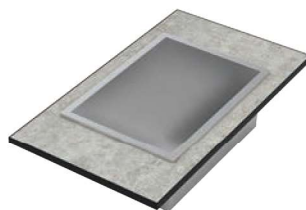
17.75" x 31.5" x 7"  
1000W, 120V

**NX-14-R-S**

Silver Aluminum Edge

**NX-14-R-B**

Black Aluminum Edge



ICE STATION -  
QUARTER SIZE

17.75" x 31.5"

Drain Assembly

**NX-14-IS-S-O**

Silver Anodized Frame  
with Oak Laminate

**NX-14-IS-B-C**

Black Anodized Frame  
with Concrete Laminate



CORNER SIDE TABLE -  
EXPOSED SHELVES

31.5" x 31.5" x 33.5"

**NX-1-CR-S-O**

Silver Anodized Frame  
with Oak Laminate

**NX-1-CR-B-C**

Black Anodized Frame  
with Concrete Laminate



CORNER SIDE TABLE -  
ENCLOSED SHELVES

31.5" x 31.5" x 33.5"

**NX-2-CR-S-O**

Silver Anodized Frame  
with Oak Laminate

**NX-2-CR-B-C**

Black Anodized Frame  
with Concrete Laminate



SEAFOOD DISPLAY - HALF SIZE

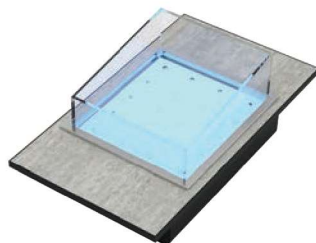
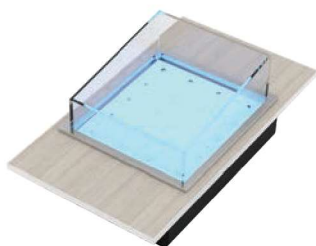
35.5" x 31.5"

**NX-12-SD-S-O**

Silver Anodized Frame  
with Oak Laminate

**NX-12-SD-B-C**

Black Anodized Frame  
with Concrete Laminate



## SEAFOOD DISPLAY - QUARTER SIZE

17.75" x 31.5"

### **NX-14-SD-S-O**

Silver Anodized Frame  
with Oak Laminate

### **NX-14-SD-B-C**

Black Anodized Frame  
with Concrete Laminate



## BARTOP

70.75" x 8" x 8"

### **NX-1-BAR-S-O**

Silver Anodized Frame  
with Oak Laminate

### **NX-1-BAR-B-C**

Black Anodized Frame  
with Concrete Laminate



## BACKBAR KIT

63" x 19.75" x 71"

### **NX-BB-S**

Silver Anodized Frame  
with Oak Laminate

### **NX-BB-B**

Black Anodized Frame  
with Concrete Laminate



## MODULE TRANSPORT CART

**NX-MT**

37.5" x 37.5" x 74"



## FRAME TRANSPORT CART

**NX-FT**

51.25" x 37.5" x 80.75"