



CHANGING REVERSIBLE HINGES on AvaValley Wine Refrigerators

2 PERSON JOB

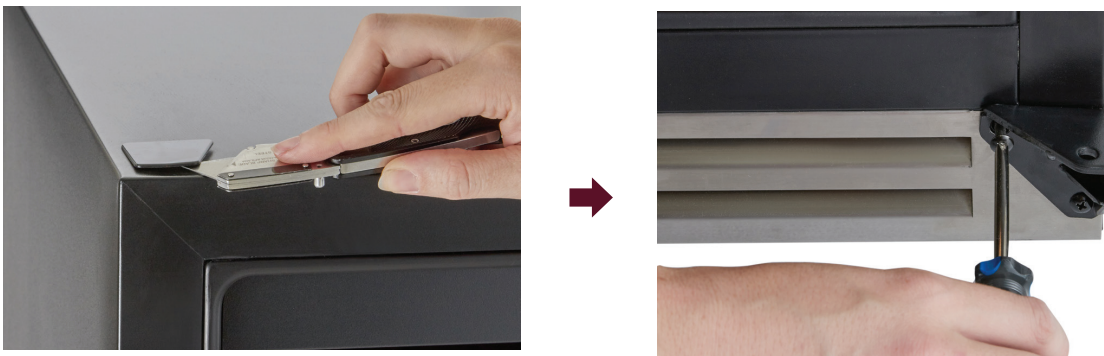
Recommended Tools:

- #2 Phillips Head Screwdriver
- Utility Knife

1) Moving the right hinges: take off the top hinge screws, then take off the glass door



2) Take off the left screw covers and bottom hinge



3) Take off the right hinges and put on screw covers

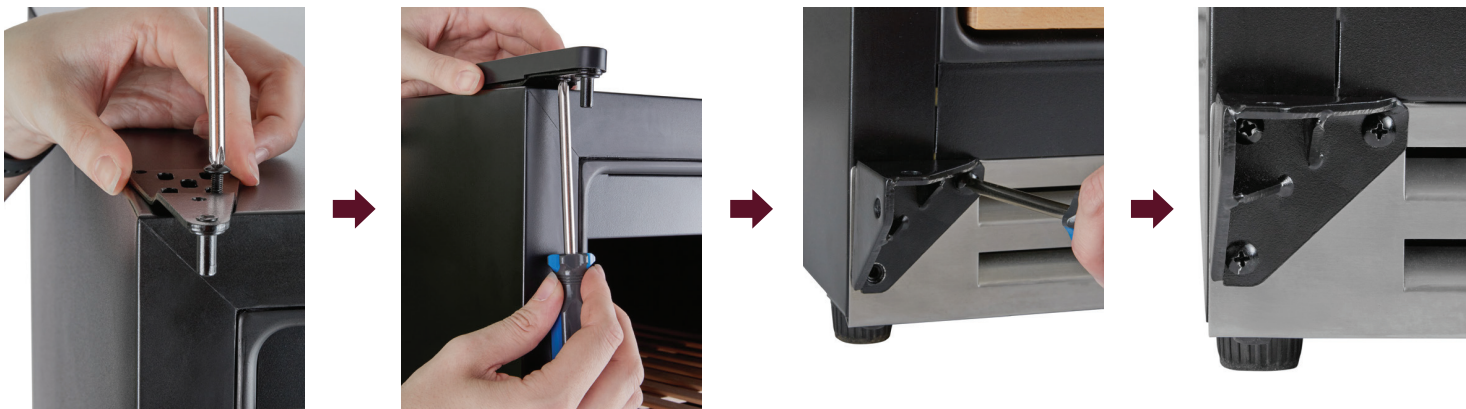


Put on the screw cover



CHANGING REVERSIBLE HINGES on AvaValley Wine Refrigerators

4) Installing the left hinges



5) Installing the glass door (Firstly moving the hinge cover on the glass door to the right side)

