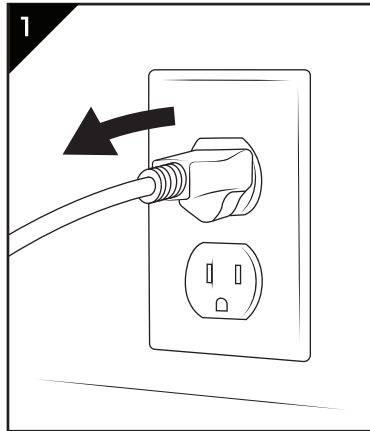
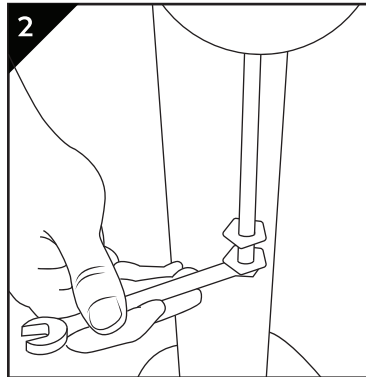


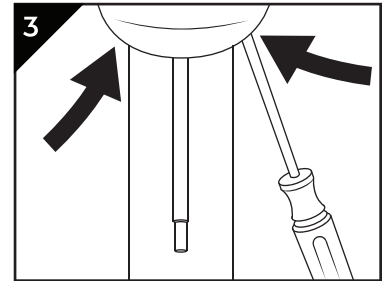
MOTOR REPLACEMENT INSTRUCTIONS



Unplug mixer.

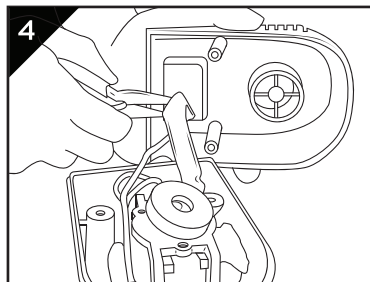


Remove the agitators from the spindle using a wrench.



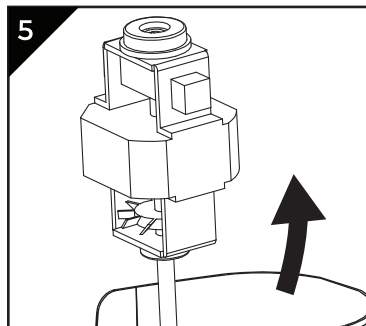
Use a screwdriver to remove the two screws from the top cover.

NOTE: These screws can be found underneath the housing, on each side of the spin

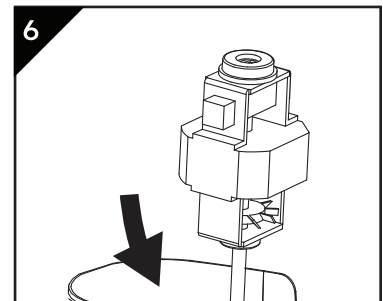


Unplug the blue wire that connects the motor and the top cover housing

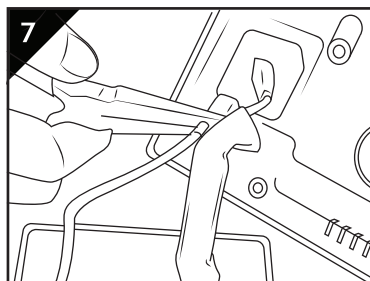
NOTE: remember where each plug belongs for reassembly.



Lift the motor assembly straight up and out of the housing.

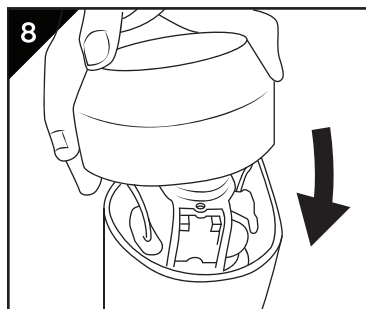


Lower the new motor assembly into the housing by guiding the spindle through the hole.

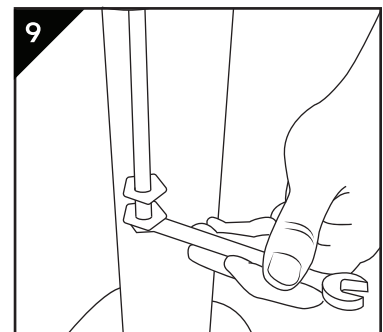


Plug the new motor into the top cover and housing just as it was before

Step 3.



Secure the top cover using a screwdriver and the original two screws.



Secure agitators to spindle using a wrench.