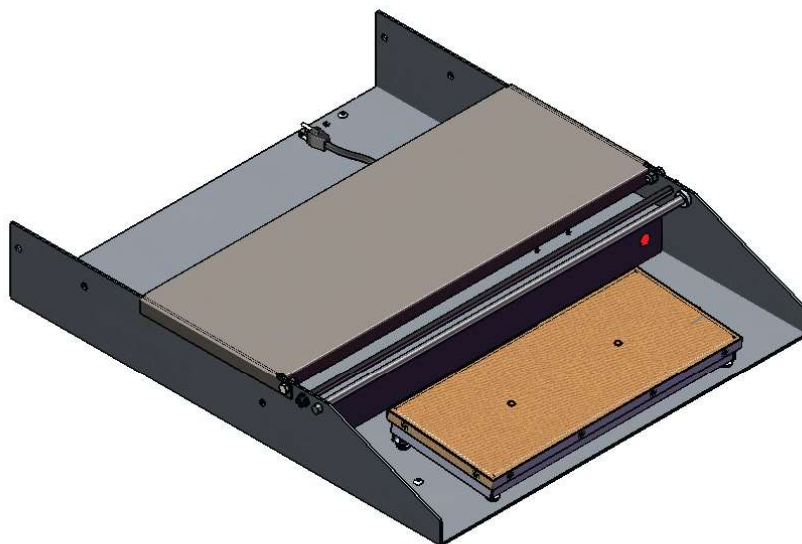


ASSEMBLY AND OPERATION INSTRUCTIONS

IN THE BOX:



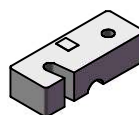
Wrapping Station Body (1 pc)



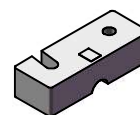
Triangular End Cap
(1 pc)



Film Rod (1 piece)



Top Block - Left
(1 pc)



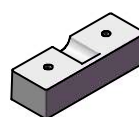
Top Block - Right
(1 pc)



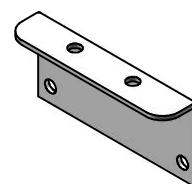
Round End Cap
(1 pc)



Pin
(1 pc)



Bearing Block
(2 pcs)



Mounting Brace
(2 pcs)



1/4"-20 x 5/8"
Hex Screw
(4 pcs)



1/4"-20
Hex Nut
(4 pcs)



1/4" Spring
Lock Washer
(4 pcs)



Plastic
Cover
(4 pcs)

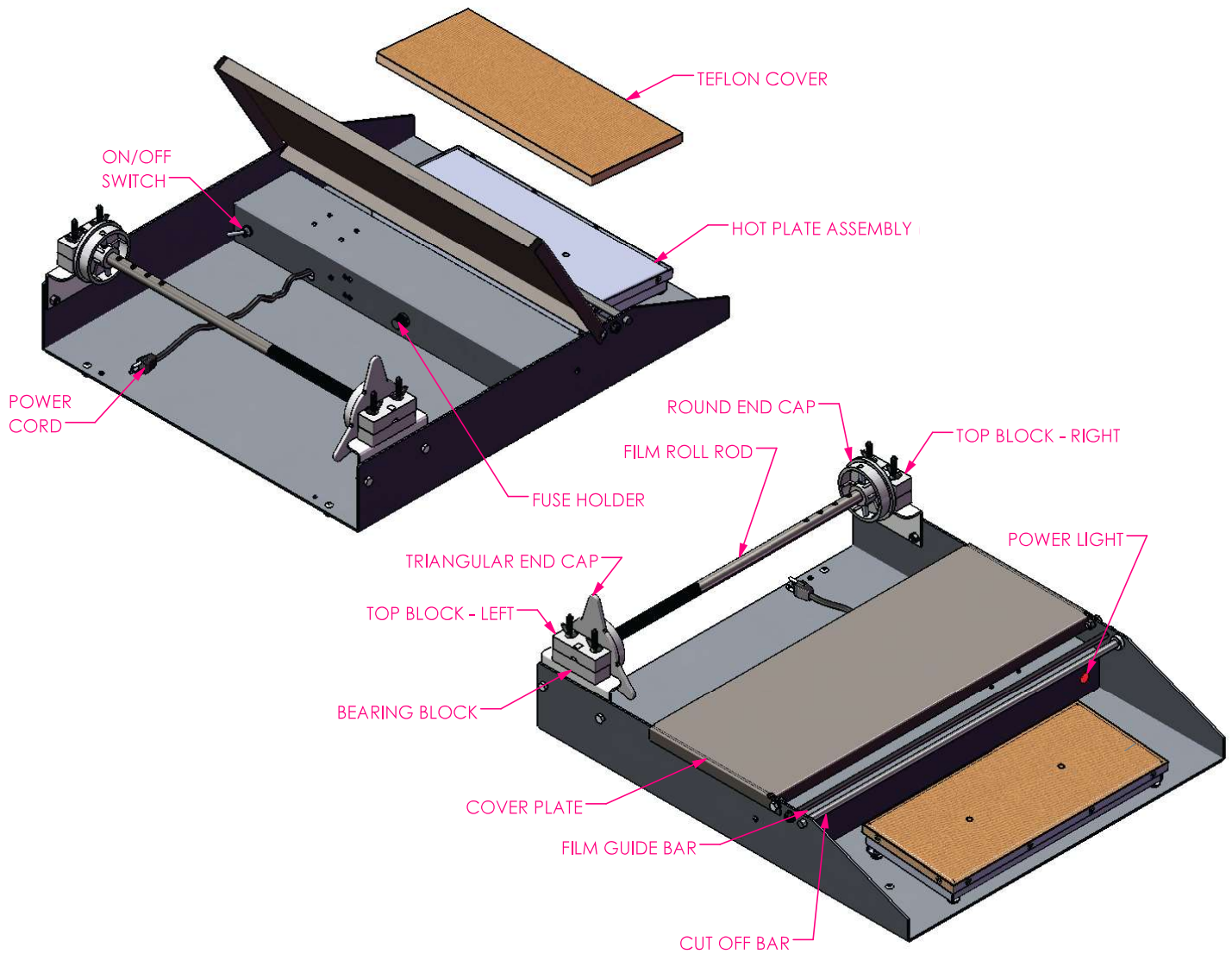


1/4"-20 x 2-3/4"
Pan Head Screw
(4 pcs)



1/4"-20
Wing Nut
(4 pcs)

IMPORTANT WRAPPING STATION SR-101 FEATURES



INITIAL ASSEMBLY OF WRAPPING STATION

1. Slide round end cap onto rod with the flat face toward the end of the rod as shown in **Figure 1**, then secure through one of the holes in the rod with the provided pin.
2. Screw the triangular end cap onto the threaded end of the rod with the flat face of the end cap toward the end of the rod, as indicated in **Figure 1**.
3. Mount the top and bottom bearing blocks loosely to the mounting braces with the pan head screws and wing nuts as indicated in **Detail A**. Note: the slot on the top block must face away from the bend in the mounting brace.
4. Attach mounting brace assemblies to inside face on sides of the wrapping station with the provided hardware as shown in **Detail B**.
5. Swing the top blocks back then place the rod assembly on top of the bearing blocks.
6. Swing the top blocks back on top of the rod, then tighten wing nuts finger tight and place the plastic covers over the exposed threads, as shown in **Figure 2**.

