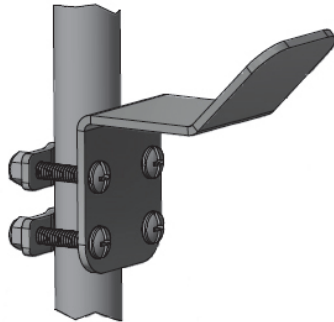




Installation Instructions

Hands-Free Arm Door Opener Kit

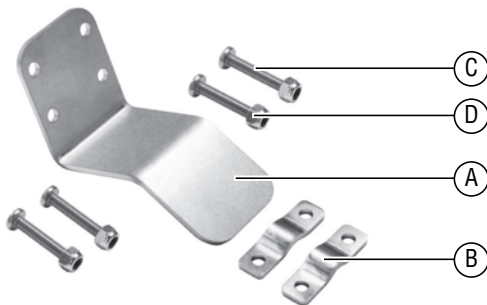


Item No.	Description
ARMPULLKIT-V	Hands-Free Arm Door Opener Kit

NOTICE: Designed to fit door handles with a diameter up to 1.175"

INSTALLATION

Kit Contents



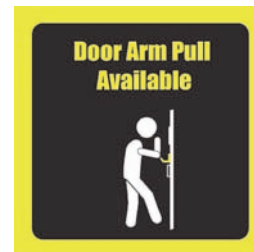
Reference	Part	Quantity
A	ARMPULL-BRKT arm door opener bracket	1
B	ARMPULL-CLAMP	2
C	4 1/4-20 x 1.5" pan head screw	4
D	4 1/4-20 nylon insert locknut	4
-	ARMPULL-STICKER	1

- While holding the ARMPULL-BRKT and screws in place with one hand on the door handle, slide one ARMPULL-CLAMP, in a horizontal position, over the top two screws on the back side of the door handle. Using the provided nylon insert locknuts, hand tighten two locknuts onto the screws. Attach the other ARMPULL-CLAMP to the remaining two bottom screws and hand tighten two locknuts. See images for orientation reference.
- The arm door opener assembly should now be secured to the door handle, but loose fitting. Adjust the height and angle of the arm door opener assembly to the desired location on the door handle, we recommend positioning it towards the top of the vertical section of the door handle with the arm door opener facing forward. Then, using a Phillips head screwdriver and wrench, tighten down each of the four screw/locknut combinations incrementally until the radius of the ARMPULL-CLAMP is contoured tightly against the door handle to the point where the arm door opener can not move or twist on the door handle when it is used.
- An optional instructional sticker is included that can be placed above the arm door opener location to inform customers of its availability and how to use it. Clean the surface where the sticker is to be placed thoroughly to ensure strong adhesion before adhering the sticker to the door.

Tools You Will Need

- 7/16" end wrench or crescent wrench
- Phillips head screwdriver

- Insert the top 2 provided screws through the top holes of the ARMPULL-BRKT and position it on the vertical section of the door handle with the door handle nested in between the screws on the left and right side of the arm door opener bracket (see above diagram for orientation reference).



- Your arm door opener is now ready for use.



www.vollrathfoodservice.com

The Vollrath Company, L.L.C.

1236 North 18th Street
Sheboygan, WI 53081-3201 U.S.A.
Main Tel: 800.624.2051 or 920.457.4851
Main Fax: 800.752.5620 or 920.459.6573
Customer Service: 800.628.0830
Canada Customer Service: 800.695.8560

Technical Services

techservicereps@vollrathco.com
Induction Products: 800.825.6036
Countertop Warming Products: 800.354.1970
Toasters: 800-309-2250
All Other Products: 800.628.0832